

Installation instructions

Orlight LED Strip Range

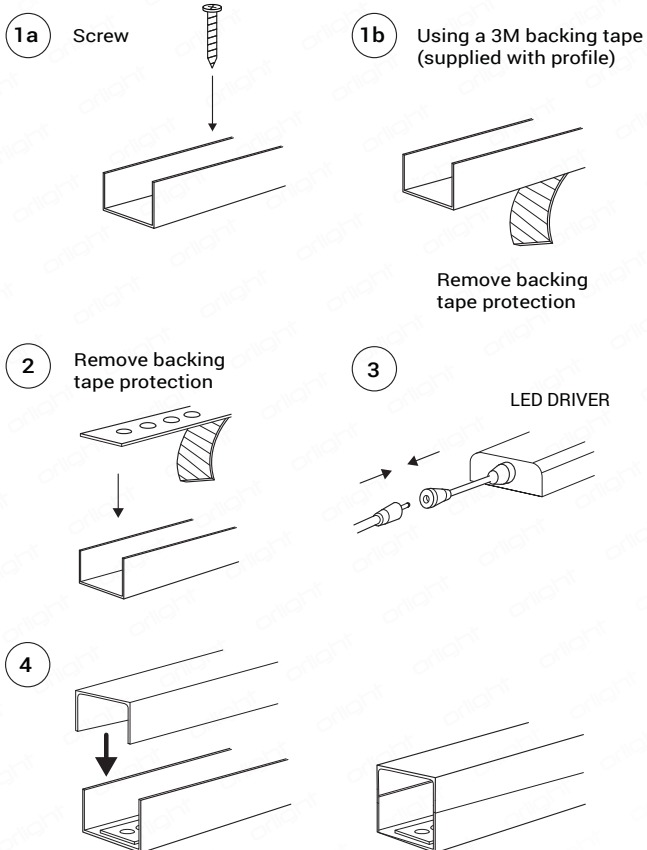
Micro Strip, Standard EVO, EVO Plus, EVO 2, EVO Plus 2, EVO 3, EVO Plus 3

INSTALLING INTO A PROFILE

Orlight LED Strips are supplied cut to length with plug and play connectors

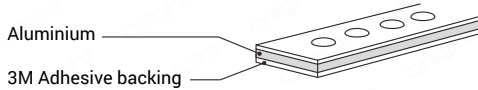
Please ensure installation surface is clear from dirt and debris.

Either / Or :

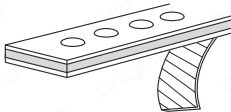


INSTALLING WITH ALUMINIUM BACKING

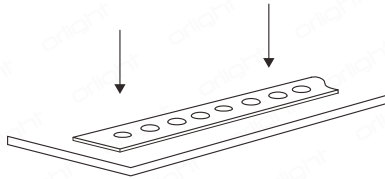
Orlight recommends installing LED strip with aluminium backing.
Please ensure installation surface is clear from dirt and debris.



1 Remove backing tape protection

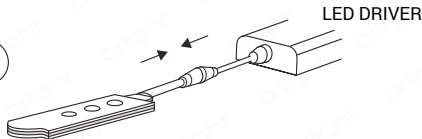


2 Secure to surface using downward pressure



NOTE : Once installed the LED strip bond is permanent.
Removing The LED strip will cause it damage.

3



We recommend that this product is installed by a competent person in accordance with the latest edition of the IET Wiring Regulations BS 7671 "Requirements for Electrical Installations" and the Buildings Regulations, as may be applicable subject to the location and country of the job or installation.

For more information and installation guide lines please refer to "Guide on Lighting Risks and Regulations" which can be downloaded from the website:

http://media.orlight.com/media/downloads/Orlight_guide_on_lighting_risks.pdf

*** Please note, all information contained within this instruction manual is provided in good faith. We will not be held responsible for any losses incurred as a result of any inaccuracies contained within this document.**