

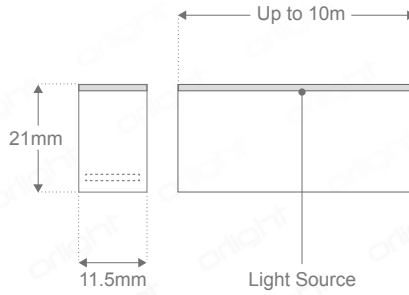
LUMENFLEX-TOP - Linear LED - Top Emitting



Description

IP68 rated flexible LED strip offering a uniform and even light distribution with no LED hotspots. Suitable for both interior and exterior applications. Injection moulded connections ensure IP68 integrity. Available in a variety of colour temperatures with a light quality assurance of CRI > 70. 2-Step MacAdams Ellipse binning strategy for colour consistency. Please refer below for available accessories.

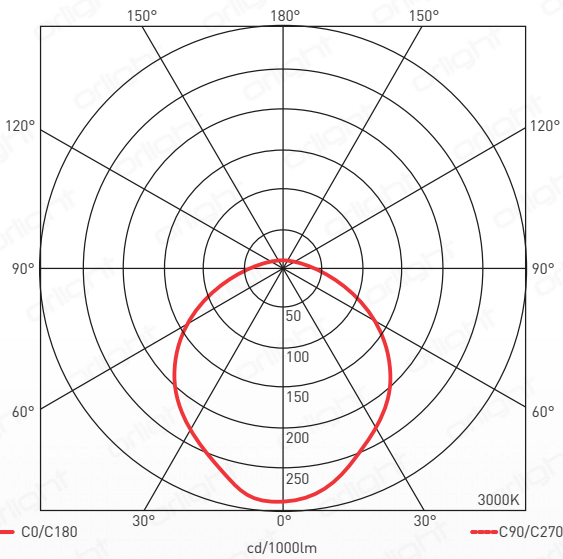
Dimensions



Standards



Polar Report



Specification

Chipset	High Efficient SMD3014 LED				
Dimming Options	Non-Dim; Mains; 1-10V; DALI				
Power Consumption	12W / Meter				
Voltage	DC24V				
Colour Temperature	2400K	2700K	3000K	3500K	4000K
Light Output ~	400lm	440lm	450lm	465lm	470lm
lm Per Watt ~	33lm/W	36lm/W	38lm/W	39lm/W	39lm/W
CRI	>70	>70	>70	>70	>70
Beam Angle	120°				
Binning	2 Step MacAdams Ellipse				
IP Rating	IP68				
IK Rating	IK08				
Length Cut Intervals	100mm				
Maximum Length	10m (20m Both Ends Feed)				
Working Ambient Temp	-20°C ~ 40°C				
Profile Options	Refer to profile options				

Colourmetrics

2400K

R1	R2	R3	R4	R5	R6	R7	R8
67	82	95	64	64	73	80	48
R9	R10	R11	R12	R13	R14	R15	
1	58	54	43	69	97	62	

2700K

R1	R2	R3	R4	R5	R6	R7	R8
67	79	90	68	63	69	82	48
R9	R10	R11	R12	R13	R14	R15	
1	51	60	33	68	94	60	

3000K

R1	R2	R3	R4	R5	R6	R7	R8
71	83	93	69	68	75	83	54
R9	R10	R11	R12	R13	R14	R15	
60	61	44	73	73	96	65	

4000K

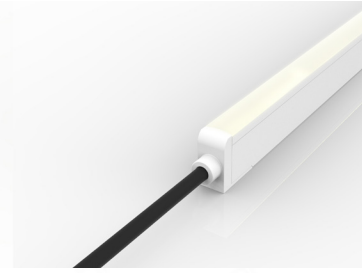
R1	R2	R3	R4	R5	R6	R7	R8
67	81	91	66	66	72	81	49
R9	R10	R11	R12	R13	R14	R15	
1	54	59	35	70	95	60	

Product Coding: Example: LF-TOP-2700K-DALI

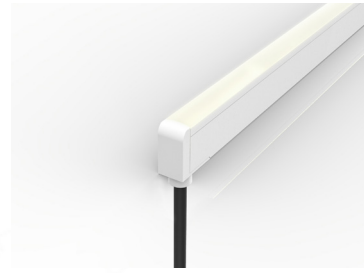
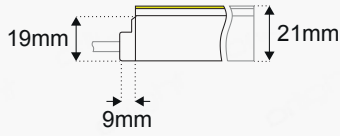
Please Specify

CODE	COLOUR TEMPERATURE	LENGTH	DIMMING	CABLE ENTRY
LF-TOP (LUMENFLEX TOP)	2400K	10M MAX	MAINS	INLINE
	2700K	REFER TO LENGTH MATRIX	1-10V	REAR
	3000K		DALI	LEFT
	3500K			RIGHT
	4000K			REFER TO CABLE ENTRY

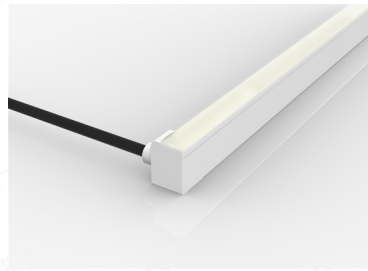
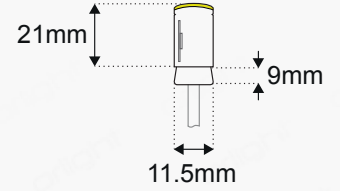
Cable Entry



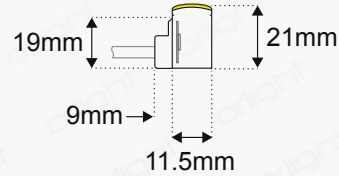
Inline Cable Entry



Rear Cable Entry



Side Cable Entry



Length Matrix

The LUMENFLEX-TOP can be cut every 100mm, take into consideration the cable entry too. The table gives information of the overall length, obtained by adding the total cable entry length (8mm) to all the available cut lengths (Up to 10m).

CUT LENGTH	~ OVERALL
100	108
200	208
300	308
400	408
500	508
600	608
700	708
800	808
900	908
1000	1008
1100	1108
1200	1208
1300	1308
1400	1408
1500	1508
1600	1608
1700	1708
1800	1808
1900	1908
2000	2008
2100	2108
2200	2208
2300	2308
2400	2408
2500	2508
2600	2608
2700	2708
2800	2808
2900	2908
3000	3008
3100	3108
3200	3208
3300	3308

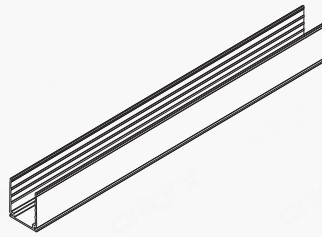
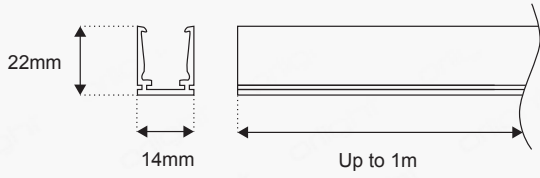
CUT LENGTH	~ OVERALL
3400	3408
3500	3508
3600	3608
3700	3708
3800	3808
3900	3908
4000	4008
4100	4108
4200	4208
4300	4308
4400	4408
4500	4508
4600	4608
4700	4708
4800	4808
4900	4908
5000	5008
5100	5108
5200	5208
5300	5308
5400	5408
5500	5508
5600	5608
5700	5708
5800	5808
5900	5908
6000	6008
6100	6108
6200	6208
6300	6308
6400	6408
6500	6508
6600	6608

CUT LENGTH	~ OVERALL
6700	6708
6800	6808
6900	6908
7000	7008
7100	7108
7200	7208
7300	7308
7400	7408
7500	7508
7600	7608
7700	7708
7800	7808
7900	7908
8000	8008
8100	8108
8200	8208
8300	8308
8400	8408
8500	8508
8600	8608
8700	8708
8800	8808
8900	8908
9000	9008
9100	9108
9200	9208
9300	9308
9400	9408
9500	9508
9600	9608
9700	9708
9800	9808
9900	9908

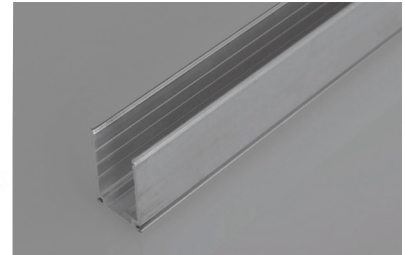
* For Inline Cable Entry end caps please allow 9mm (See Cable Entry)

Mounting Profile Options

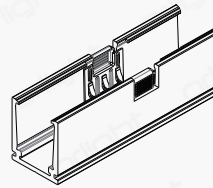
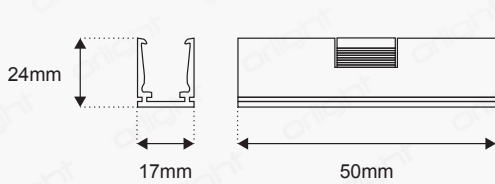
LUMENFLEX TOP HS - Standard Aluminium U Profile



Standard Profile



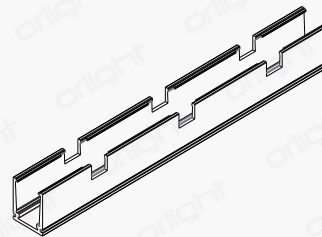
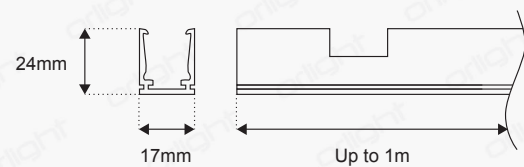
LUMENFLEX TOP HS-SL-50 - Self-locking Aluminium U Channel 50mm



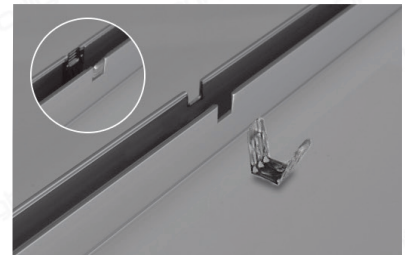
Self-locking 50mm Clip



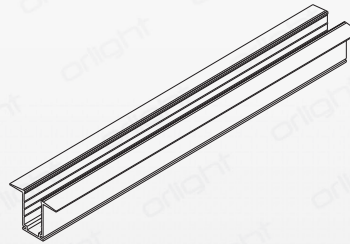
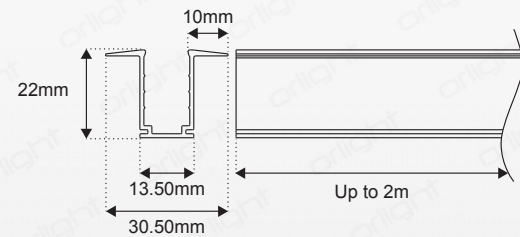
LUMENFLEX TOP HS-SL - Self-locking Aluminium U Profile



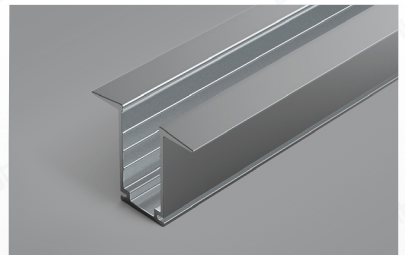
Self-locking Profile



LUMENFLEX TOP HS-10MM-LIP - Standard Aluminium U Profile with 10mm Lip



Standard Profile with 10mm Lip



Drivers

DRIVER (Non-Dim)	SPECIFICATION	DIMENSIONS (LxWxH)	LUMENFLEX LENGTH
ORLRPV2435	LED Driver, DC24V, 35W	141mm x 40mm x 30mm	1.5m - 3m
ORLRPV2460	LED Driver, DC24V, 60W	162mm x 42mm x 32mm	3m - 5m
ORLRPV24100	LED Driver, DC24V, 100W	190mm x 52mm x 36mm	5m - 9m
ORLRPV24150	LED Driver, DC24V, 150W	222mm x 68mm x 39mm	9m+
DRIVER (Mains Dim)			
ORLRPV25-24MD	LED 25W Mains Dimmable Driver 24V	154mm x 54mm x 20mm	0m - 2m
ORLRPV50-24MD	LED 50W Mains Dimmable Driver 24V	177mm x 61mm x 24mm	2m - 4.5m
ORLRPV100-24MD	LED 100W Mains Dimmable Driver 24V	230mm x 70mm x 46mm	4.5m - 9m
INTERFACE			
ORLRPV-INTERFACE-MINI	1-10V INTERFACE	100mm x 37mm x 20mm	Up to 10m
ORLDALIINTERFACE-12/24/36V	DALI INTERFACE	100mm x 37mm x 20mm	Up to 10m