

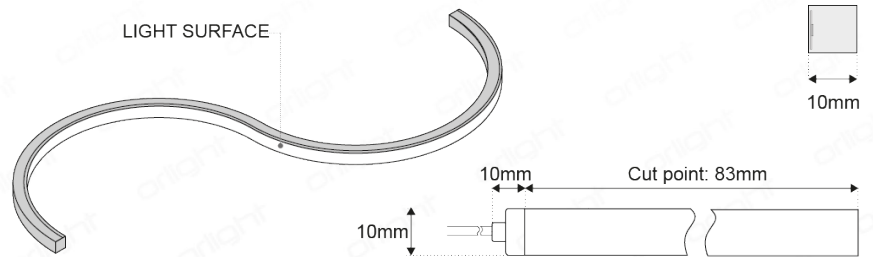
LUMENFLEX-SIDE-MINI - Linear LED - Side Emitting



Description

IP65 rated mini flexible LED strip offering a uniform and even light distribution with no LED hotspots. Suitable for both interior and exterior applications. Injection moulded connections ensure IP65 integrity. Available in a variety of colour temperatures with a light quality assurance of CRI > 80. Please refer below for available accessories.

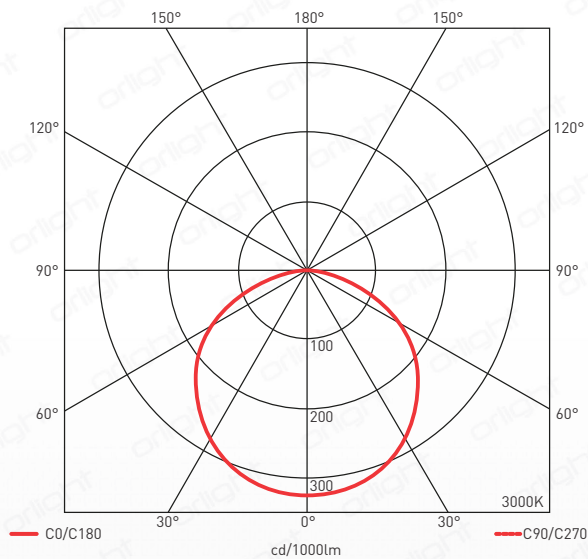
Dimensions



Specification

Chipset	High Quality Epistar SMD LED Chip	
Dimming Options	Non-Dim; Mains; 1-10V; DALI	
Power Consumption	4.5W/M	
Voltage	DC24V	
Colour Temperature	3000K	4000K
Light Output	175lm	185lm
lm Per Watt	39lm/W	41lm/W
CRI	>80	>80
Beam Angle	120°	
Binning	3 Step Macadam Ellipse	
Chiplife	>36,000hrs	
IP Rating	IP65	
IK Rating	IK05	
Length Cut Intervals	Min 83.3mm	
Maximum Length	10M (20M fed from both ends) Refer to wiring diagram	
Working Ambient Temp	-20°C ~ 45°C	
Profile Options	Refer to profile options	
Bending Radius	100mm	

Polar Report



Colourmetrics

3000K							
R1	R2	R3	R4	R5	R6	R7	R8
82	92	96	80	81	90	83	60
R9	R10	R11	R12	R13	R14	R15	
10	81	78	67	84	98	75	

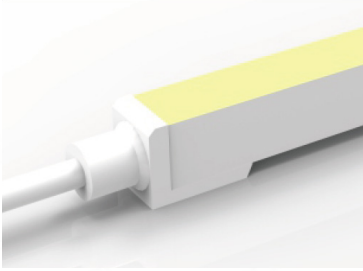
4000K							
R1	R2	R3	R4	R5	R6	R7	R8
80	90	96	79	80	85	86	64
R9	R10	R11	R12	R13	R14	R15	
7	75	78	57	83	98	74	

Product Coding: Example: LF-SIDE-MINI-3000K-10M

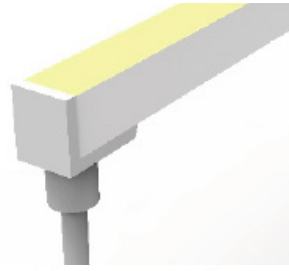
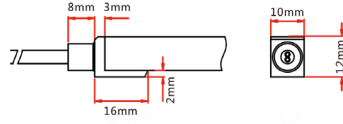
Please Specify

CODE	COLOUR TEMPERATURE	LENGTH	DIMMING	CABLE ENTRY
LF-SIDE-MINI	3000K	20M MAX	MAINS	INLINE
	4000K	REFER TO LENGTH MATRIX	1-10V	REAR
			DALI	LEFT
				RIGHT
				REFER TO CABLE ENTRY

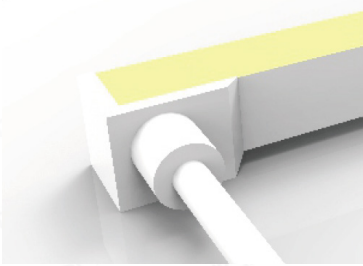
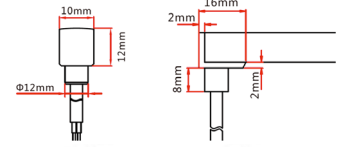
Injection Moulded Cable Entry



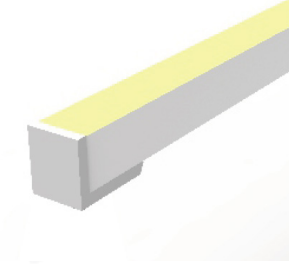
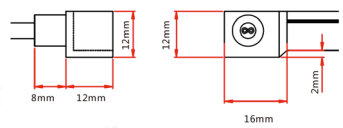
Inline Cable Entry



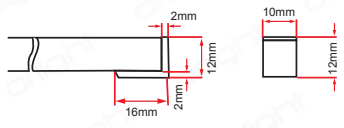
Rear Cable Entry



Side Cable Entry



End Cap



Injection Moulded Inline Cable Entry Length Matrix

The LUMENFLEX-SIDE-MINI can be cut every 83mm, take into consideration the cable entry. The below table gives information of the overall length, obtained by adding the total cable entry length (8mm) to all the available cut lengths 10M (20M fed from both ends).

NOTE. Please allow 18mm for the Inline cable entry and allow 3mm for the Rear, Side & End Cap

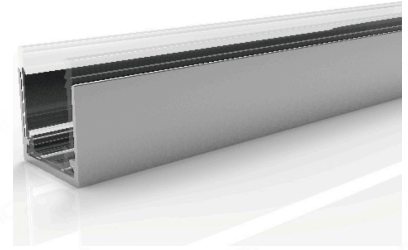
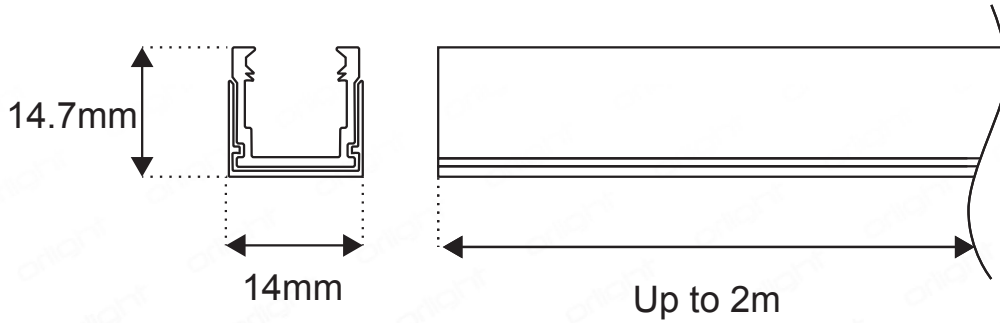
BEWARE. Allow for a tolerance of +/- 0.3mm on cut points

CUT LENGTH	CUT LENGTH	CUT LENGTH	CUT LENGTH	CUT LENGTH	CUT LENGTH	CUT LENGTH
83	3250	6417	9584	12751	15917	19083
167	3334	6501	9668	12834	16000	19167
250	3417	6584	9751	12917	16083	19250
334	3501	6668	9834	13000	16167	19334
417	3584	6751	9917	13083	16250	19417
501	3668	6834	10000	13167	16334	19501
584	3751	6917	10083	13250	16417	19584
668	3834	7000	10167	13334	16501	19668
751	3917	7083	10250	13417	16584	19751
834	4000	7167	10334	13500	16668	19834
917	4083	7250	10417	13584	16751	19917
1000	4167	7334	10501	13668	16834	20000
1083	4250	7417	10584	13751	16917	
1167	4334	7501	10668	13834	17000	
1250	4417	7584	10751	13917	17083	
1334	4501	7668	10834	14000	17167	
1417	4584	7751	10917	14083	17250	
1501	4668	7834	11000	14167	17334	
1584	4751	7917	11083	14250	17417	
1668	4834	8000	11167	14334	17501	
1751	4917	8083	11250	14417	17584	
1834	5000	8167	11334	14500	17668	
1917	5083	8250	11417	14584	17751	
2000	5167	8334	11501	14668	17834	
2083	5250	8417	11584	14751	17917	
2167	5334	8501	11668	14834	18000	
2250	5417	8584	11751	14917	18083	
2334	5501	8668	11834	15000	18167	
2417	5584	8751	11917	15083	18250	
2501	5668	8834	12000	15167	18334	
2584	5751	8917	12083	15250	18417	
2668	5834	9000	12167	15334	18501	
2751	5917	9083	12250	15417	18584	
2834	6000	9167	12334	15500	18668	
2917	6083	9250	12417	15584	18751	
3000	6167	9334	12501	15668	18834	
3083	6250	9417	12584	15751	18917	
3167	6334	9501	12668	15834	19000	

Mounting Profile Options

LUMENFLEX-SIDE-MINI HS - Standard Aluminium & Plastic Combination Profile

Standard Profile



Drivers

DRIVER (Non-Dim)	SPECIFICATION	DIMENSIONS (LxWxH)	LUMENFLEX LENGTH
ORLRPV2435	LED Driver, DC24V, 35W	141mm x 40mm x 30mm	min - 7m
ORLRPV2460	LED Driver, DC24V, 60W	162mm x 42mm x 32mm	7m - 13m
DRIVER (Mains Dim)			
ORLRPV25-24MD	LED 25W Mains Dimmable Driver 24V	154mm x 54mm x 20mm	min - 5m
ORLRPV50-24MD	LED 50W Mains Dimmable Driver 24V	177mm x 61mm x 24mm	5m - 10m
INTERFACE			
ORLRPV-INTERFACE-MINI	1-10V INTERFACE	100mm x 37mm x 20mm	Up to 20m
ORLDALIINTERFACE-12/24/36V	DALI INTERFACE	100mm x 37mm x 20mm	Up to 20m

Driver Wiring Diagrams

20M to be powered with two 60W drivers as shown below

