

smart working

CREATING GREAT COLLABORATIVE WORKSPACE

orangebox



Obvio active tables

Technical information

Obvio active tables are designed to offer a versatile solution for a changing workplace.

A sturdy flip-top mechanism forms the basis of the design allowing the tables to be nested together and minimise their footprint when not in use.

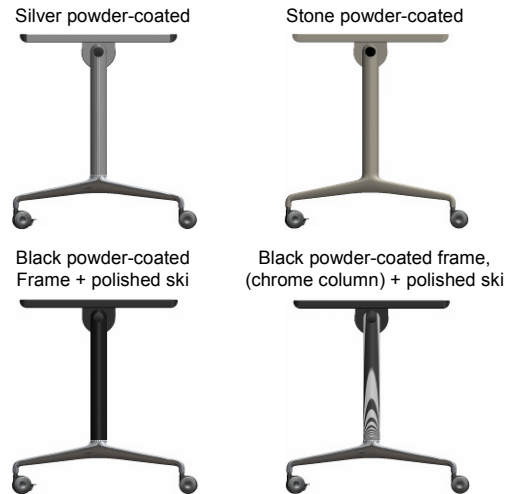
Obvio tables are available with cable access and power options to give maximum functionality.

Table base

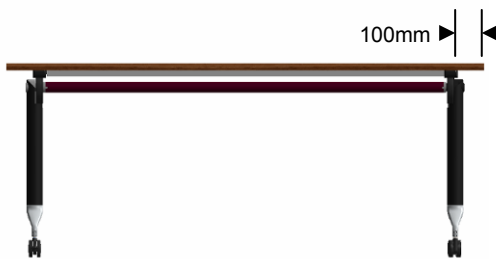
Cast aluminium ski base with steel column and frame.

Obvio active table frame and ski base are powder coated silver as standard.

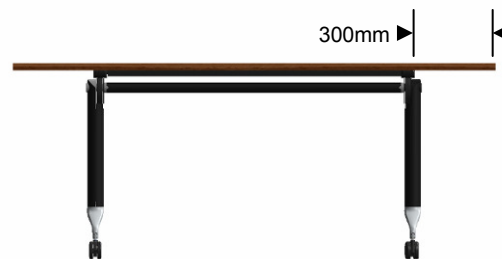
Customers have the option of specifying the table base with a 'stone' coloured finish *or* black frame, black column and a polished ski *or* black frame, chrome plated column and a polished ski.



Leg positions



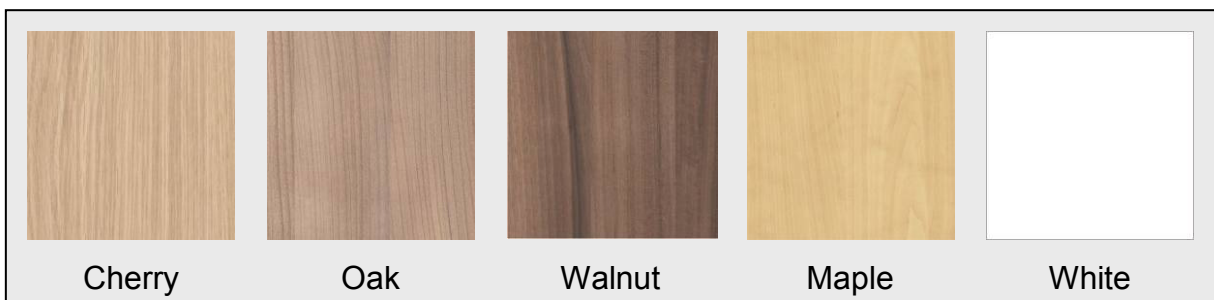
'end leg' option



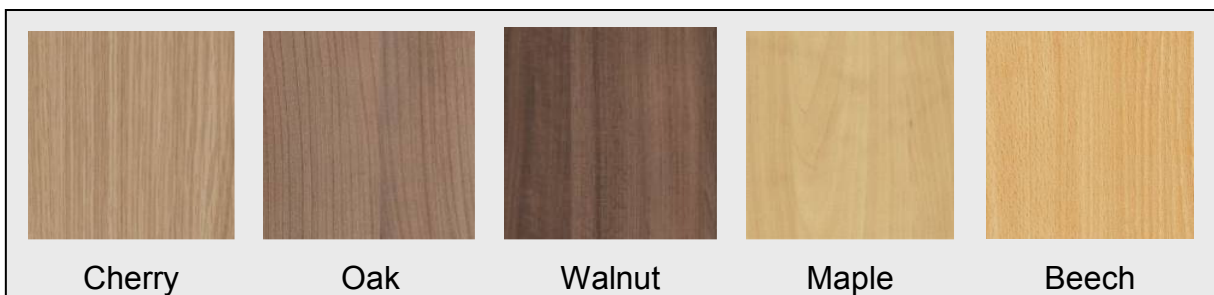
'inset leg' option (allows seating at the end of the table)

Top finishes

Standard melamine range (Actual finishes may differ slightly from images shown - Samples can be supplied on request)

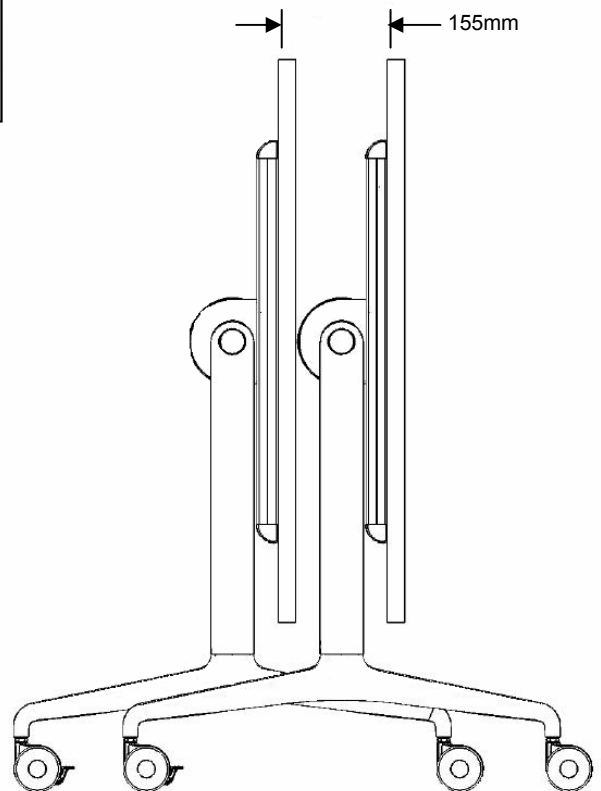
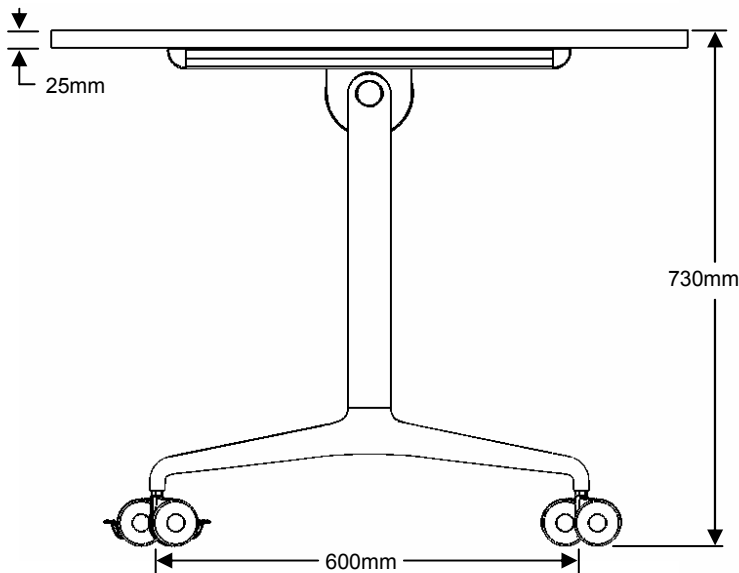
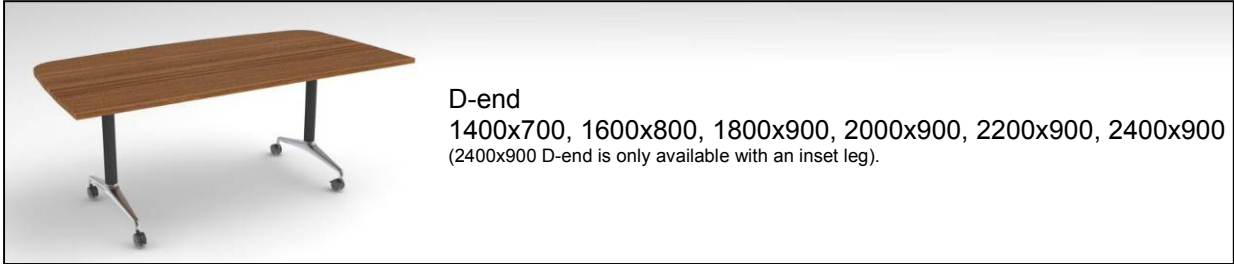
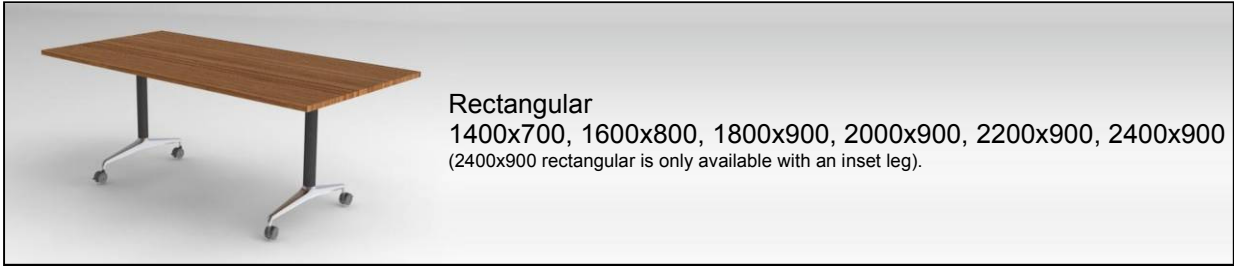


Standard veneer range (Actual finishes may differ slightly from images shown - Samples can be supplied on request)



Top shapes and sizes

Obvio tables are available in the following shapes and sizes:



Castors

Obvio tables use 2 standard and 2 lockable soft tyre, black castors.

Top construction

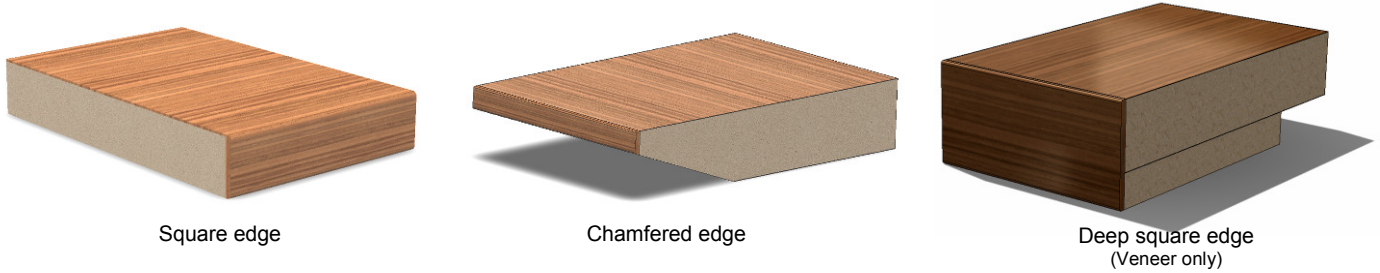
Melamine and veneer finishes are pressed onto 25mm MDF board.

Grain direction

Grain direction will run the length of the table. Veneers are quarter cut, straight grain and slip matched.

Edge styles

Melamine edges are made from matching 2mm ABS. Veneer edges are 2.5mm solid wood.



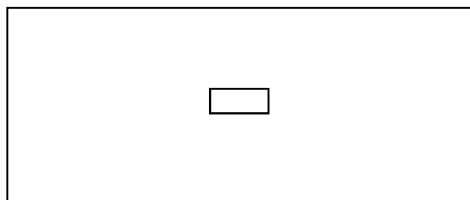
Linking

Black nylon linking arms are fitted to the underside of the table tops. These allow the user to link tables together in blocks.

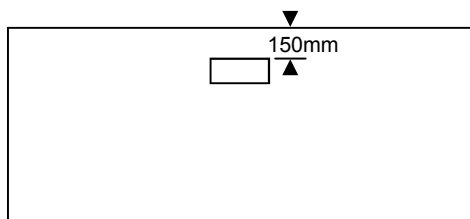


Cable ports

A brushed aluminium cable port with hinged lid and black brush strip is available fitted in a central or offset position. This allows cables to be passed through the table top.



Central position

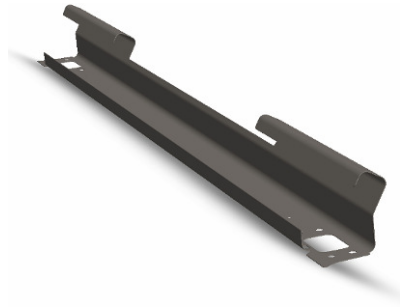


Offset position



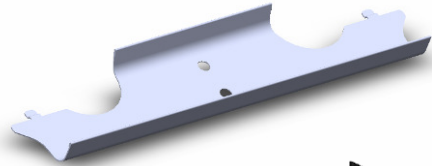
Cable tray

The cable tray runs the length of the under-frame and simply drops into position. The tray is supplied with cable clamps and cable protection grommets. No fixings are required. Trays are available in silver, black or stone powder-coat to match the frame.



Cable bridge

The cable bridge is used to connect cable trays on linked tables to create a continuous tray. Two sizes are available, large for use on tables with inset legs and small for use on tables with end legs. Trays are available in silver, black or stone powder-coat to match the frame.



Leg cable riser

The cable leg riser snaps onto the leg column and allows 2-way segregation of Cables. Cable risers are available in silver, black or stone powder-coat to match the frame.



Umbilical cable riser

Translucent plastic rings with a weighted foot allow 4-way segregation of cables.



Modesty panel

The modesty panel fixes into and runs the length of the under-frame. The drop is 300mm and made of frosted plastic.



Power unit

3-gang power unit (3.15A) individually fused sockets. Fits into the cable tray. Also available– starter cables (2.5m with UK plug), interconnecting cables which allow (max) 2 units to be connected in line. Connecting cables are available in 1200, 1400, 1600, 1800, 2000 and 2200mm lengths.



orangebox

Head office and Manufacturing

Penallta Industrial Estate
Hengoed
Mid Glamorgan
CF82 7SU

T: 01443 816604

F: 01443 816638

www.orangebox.com

Showroom

33-39 Bowling Green Lane
London
EC1R 0BJ

T: 020 7837 9922

F: 020 7837 4441

showroom@orangebox.com