

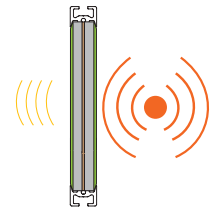
# linio

intelligent design allows the screens to be assembled and reconfigured easily and quickly, making it flexible, efficient space division.

simplicity / choice / function

A beautifully light screen created to provide an aesthetic solution when surrounding soft seating and tabling. Linio perfectly matches and complements the Orangebox Perimeter seating system.

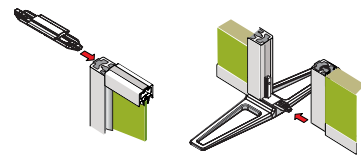
Using anodised aluminium frames creates a coherence with Airea, Cove and Bay screens. An extensive choice of infills can be used to create a great balance of soft and hard surfaces both opaque and translucent, and all in a range of complementary colours.



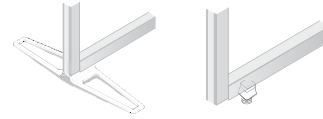
specially designed multi layer acoustic infills are designed to increase absorption and reduce reverberation, minimising speech travel within the workplace.



power/data is integrated into the end post allowing you to 'plug-in and go'.



simple push fit connectors allow screens to be linked easily and quickly.



two foot options; aluminium spreader foot or fixed plastic foot, allow you to cater for a range of different floorings.

