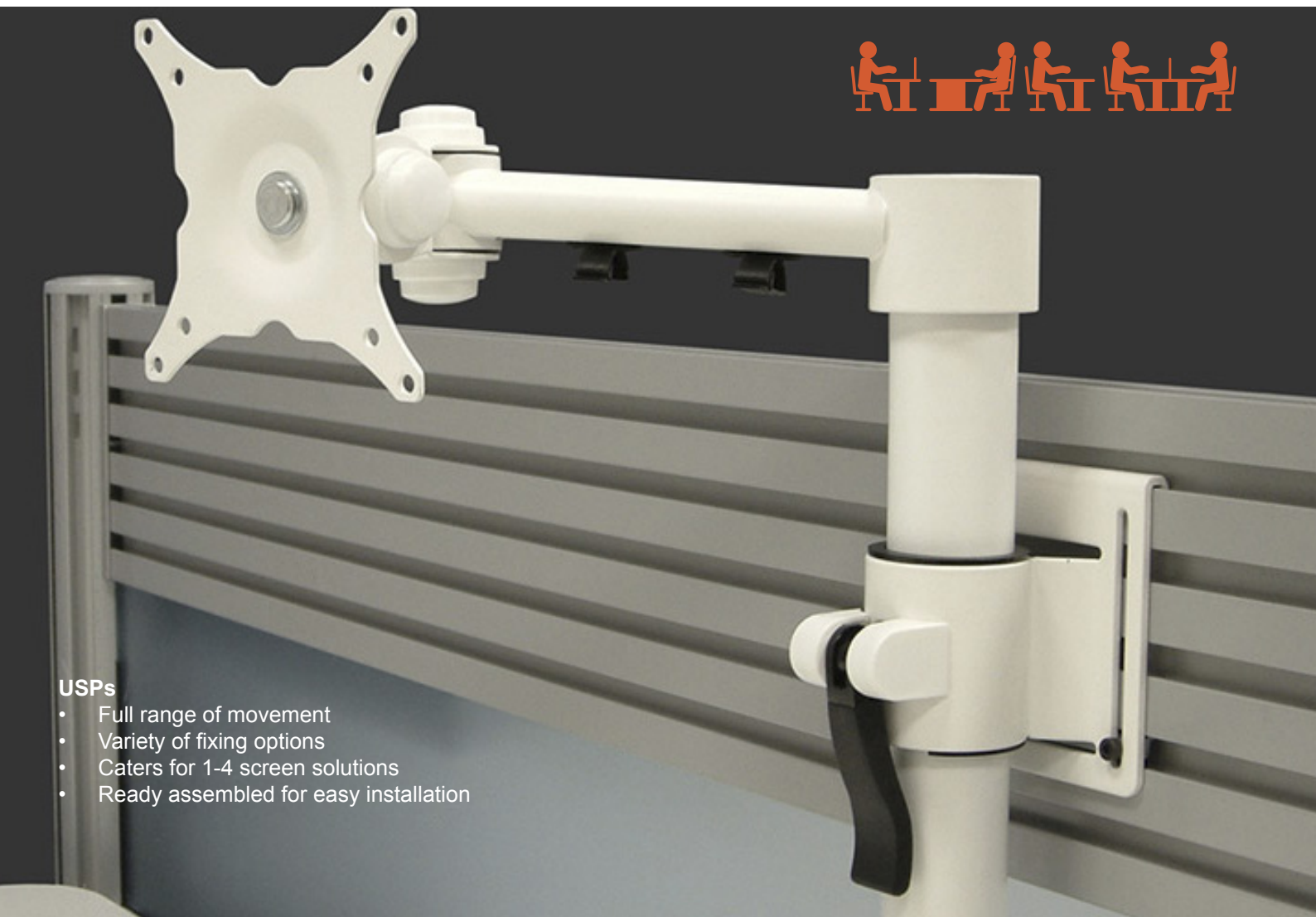
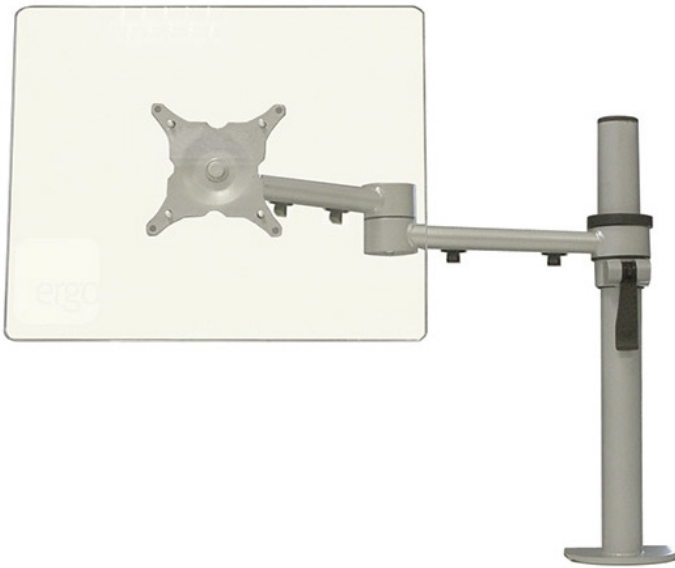


# streamplus

The STREAM PLUS has been designed and engineered in the UK to provide a cost effective solution for mounting single or multiple monitors to office workstations.

Available in silver, white or black and with a full range of movements, STREAM PLUS is both ergonomic and aesthetically pleasing to the eye.

Single and dual beam arms, plus desk edge clamp post, through desk and tool rail fixing options, enable STREAM PLUS to be eminently suitable for most workstations.



## USPs

- Full range of movement
- Variety of fixing options
- Caters for 1-4 screen solutions
- Ready assembled for easy installation

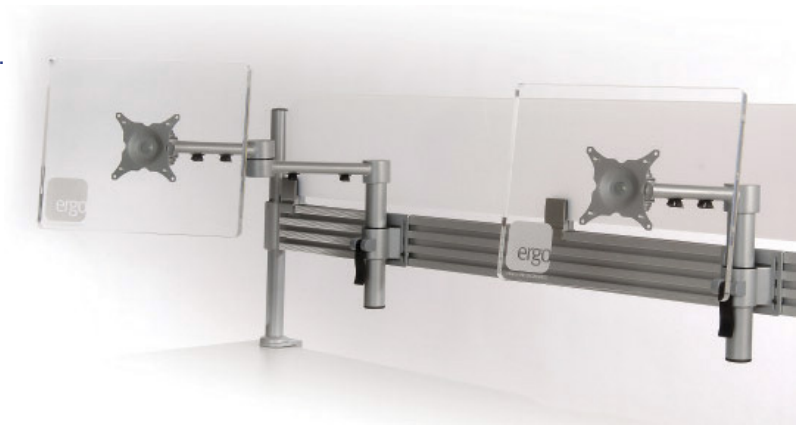
# technical

STREAM PLUS has been engineered to offer a cost effective yet aesthetically pleasing solution to ergonomic requirements, in the process addressing the often significant imbalance between the cost of a monitor and the cost of a monitor arm.

Sturdily constructed in powder coated steel, STREAM PLUS is not only designed to last but is also 98% recyclable.

## Key Features

- Full range of movements including height adjustment, tilt, rotation and reach
- Supplied as standard with C-clamp for desk tops up to 60mm thick
- Tough desk and slat rail fixing options
- Load range from 0 - 20Kg
- Height adjustment range of 275mm
- Cable management clips on beam arm
- Available in silver, white and black
- 98% recyclable
- Supplied ready assembled for easy installation.



## streamplus fitting options



Clamp post



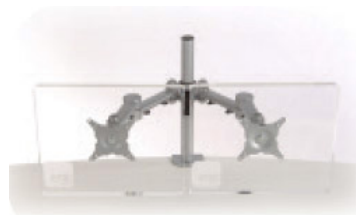
Through desk fixing



Single beam tool rail



Dual beam tool rail



two screen arm with clamp post