

powerstation

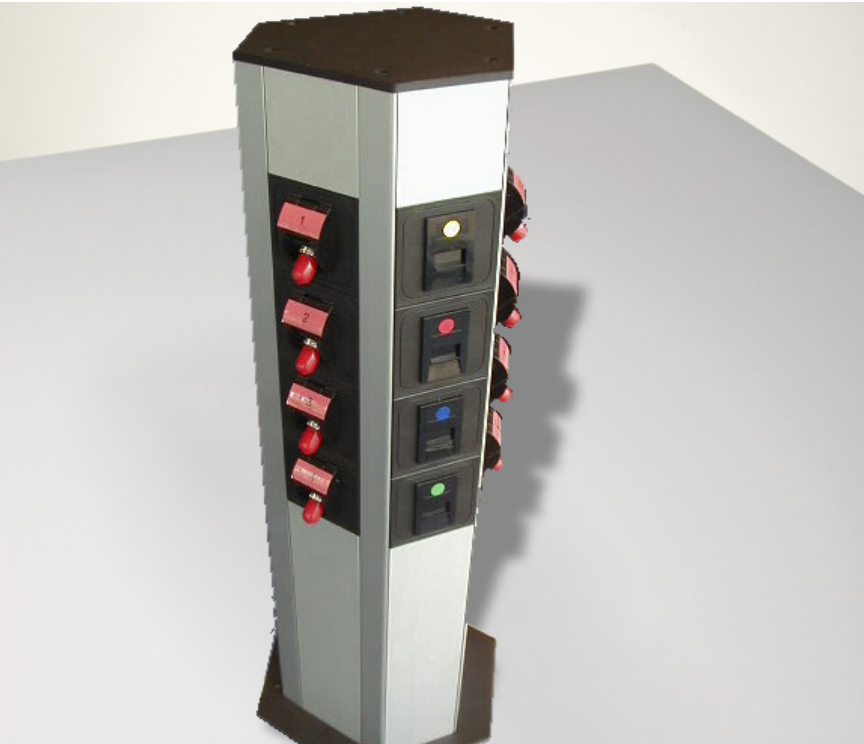
POWERSTATION offers a slim style power and data distribution unit with five completely segregated sections.

Available in any length up to three metres, the POWERSTATION provides a compact solution to office power distribution.

POWERSTATION can be fitted through the desk, under the desk, above the desk, or in the middle of the room, with multiple fixing options the POWERSTATION can be free standing bollard or fixed to furniture.

Please call or email for further information

All **OE** Electrics products are manufactured to enable compliance with BS6396 or BS7671 where relevant.



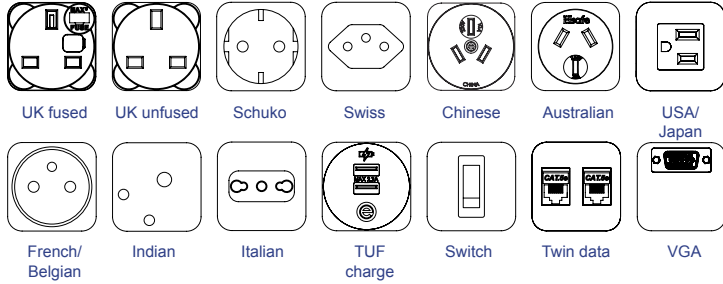
USPs

- Power & data distribution unit
- Five completely segregated sections
- Available in lengths of up to 3m
- Available with TUF charger
- BS6396 compliant (where applicable)
- Available with sockets from different nationalities



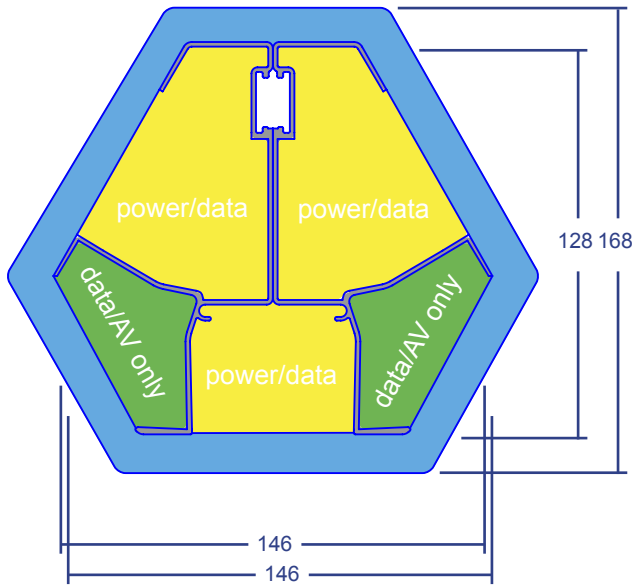
technical

Common Modular Components*

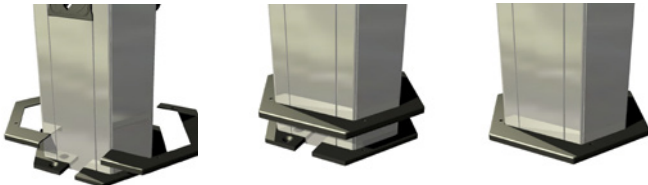


*See website for more

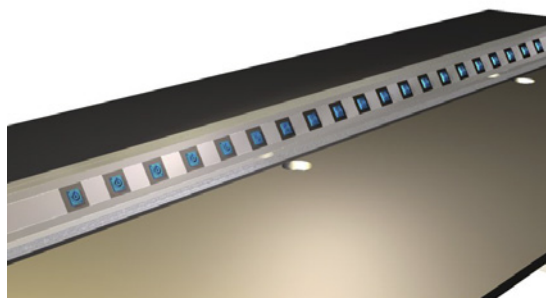
Basic Layout



Base plate cover



The baseplate cover allows the POWERSTATION to be fitted to the floor without any visual sign of fixings



POWERSTATION can be utilized in a horizontal position - used on either desks, floors, stages etc, please call sales for further information.

Features

Configuration:

Power only / Data only / Combined (Power & Data/AV)
Internal segregation between Power and Data/AV in combined POWERSTATION units

Earthing: Fully earthed aluminium construction - as required by BS6396

Earth Bonding:

Earth leads can be supplied to allow the bonding of earth to furniture when required

Fusing:

(to enable compliance to BS6396)
5 x 20mm anti-surge ceramic fuses, with colour-coded fuseclips to denote the rating (3.15A/5A)

Security:

ANTI-FLEX system: Unique full length locking system guarantees unit integrity regardless of length

Testing:

100% testing - continuity, polarity, insulation & earth

Soft Wiring (power)

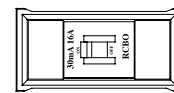
Power hardwired to Wieland GST connector allows starter cables to be changed to suit requirements, especially during moves and changes (CHURN)

Protection:

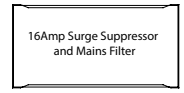
Power cleaner, surge protector, MCB, RCD, RCBO, etc.



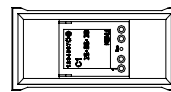
16A MCB (single or twin)



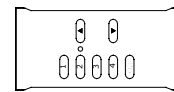
30mA/16A RCBO



16A surge suppressor



Timer Switch



Remote Control keypad



Elsave power management solution

Applications

