



PLUTO satisfies a demand for power and data connectivity, in informal spaces, in a way that no other module has done before. Perfectly suited to breakout areas, smaller meeting rooms and coffee tables - PLUTO makes sharing power a pleasure. Studies show that people work far more effectively in small groups and indeed new ideas come from people working in pairs.

With over 25 years experience in the market, and as leaders in terms of design and practicality, **OE** Electrics have developed PLUTO to match our customers' desire for a solution that fits these new ways of working.

With 3 outlet positions, PLUTO is perfect for a small team to power/charge their devices using conventional mains plugs.



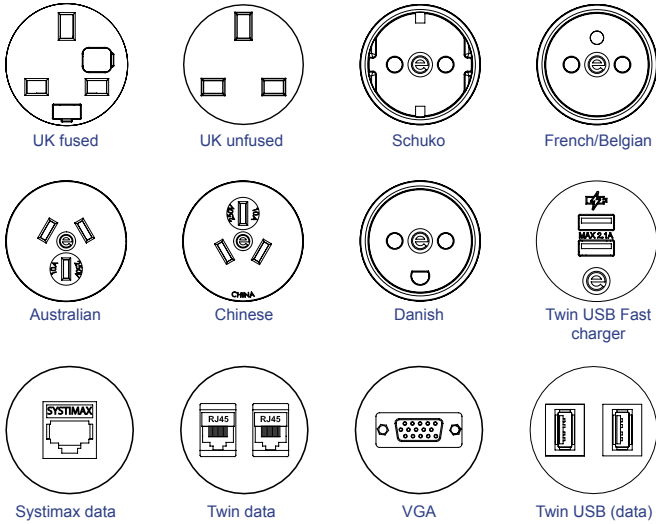
USPs

- 360 degree access
- Multiple colours & finishes available
- Suitable for many different environments
- Available with TUF charger
- BS6396 compliant (where applicable)
- Available with power sockets from different nationalities



technical

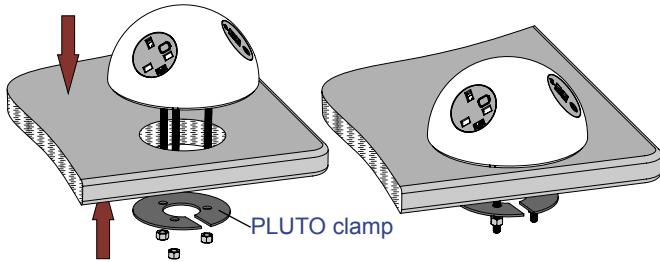
Common Modular Components⁺



Fixing methods

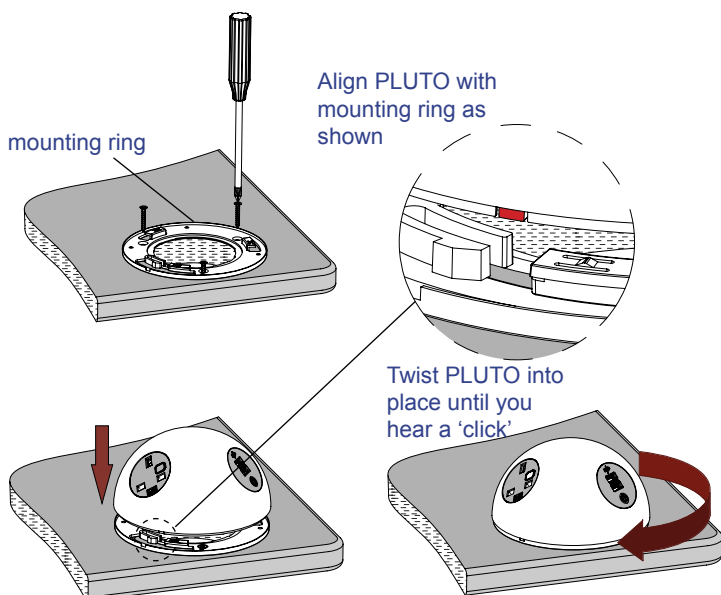
PLUTO clamp fixing

For fitting into a 60mm grommet hole
Place PLUTO over 60mm grommet hole, slide PLUTO clamp onto bolts and screw on nuts until PLUTO is firmly in place.



PLUTO mounting adaptor ring screw fixing

Place mounting ring over 50-80mm* hole.
Screw mounting ring in place.



*Minimum 60mm hole is required for UK plug

⁺Currently UK, French/Belgian, Schuko, Australian available. Other sockets available soon

Features

Configuration:

Power only / Data only / Combined (Power & Data/AV)
Internal segregation between Power and Data/AV in combined PLUTOs

Insulation:

Re-inforced insulation

Earth Bonding:

A rewirable external earth terminal allows the removal/change of earth bonding leads without dismantling the unit.

Fusing: (to enable compliance to BS6396)

5 x 20mm anti-surge ceramic fuses, with colour-coded fuseclips to denote the rating (3.15A/5A)

Testing:

100% testing - continuity, polarity, insulation & earth

Rating

PLUTO with Wieland GST entry are rated to 16Amps.
20Amp rating available on request.

Soft Wiring (power)

Power wired to Wieland GST connector allows starter cables to be changed to suit requirements, especially useful during moves and changes (CHURN)

PLUTO mounting adaptor ring with grommet fixing

Place mounting ring over 80mm hole.
Place 80mm grommet into mounting ring and screw up retaining nut until firmly in place.

