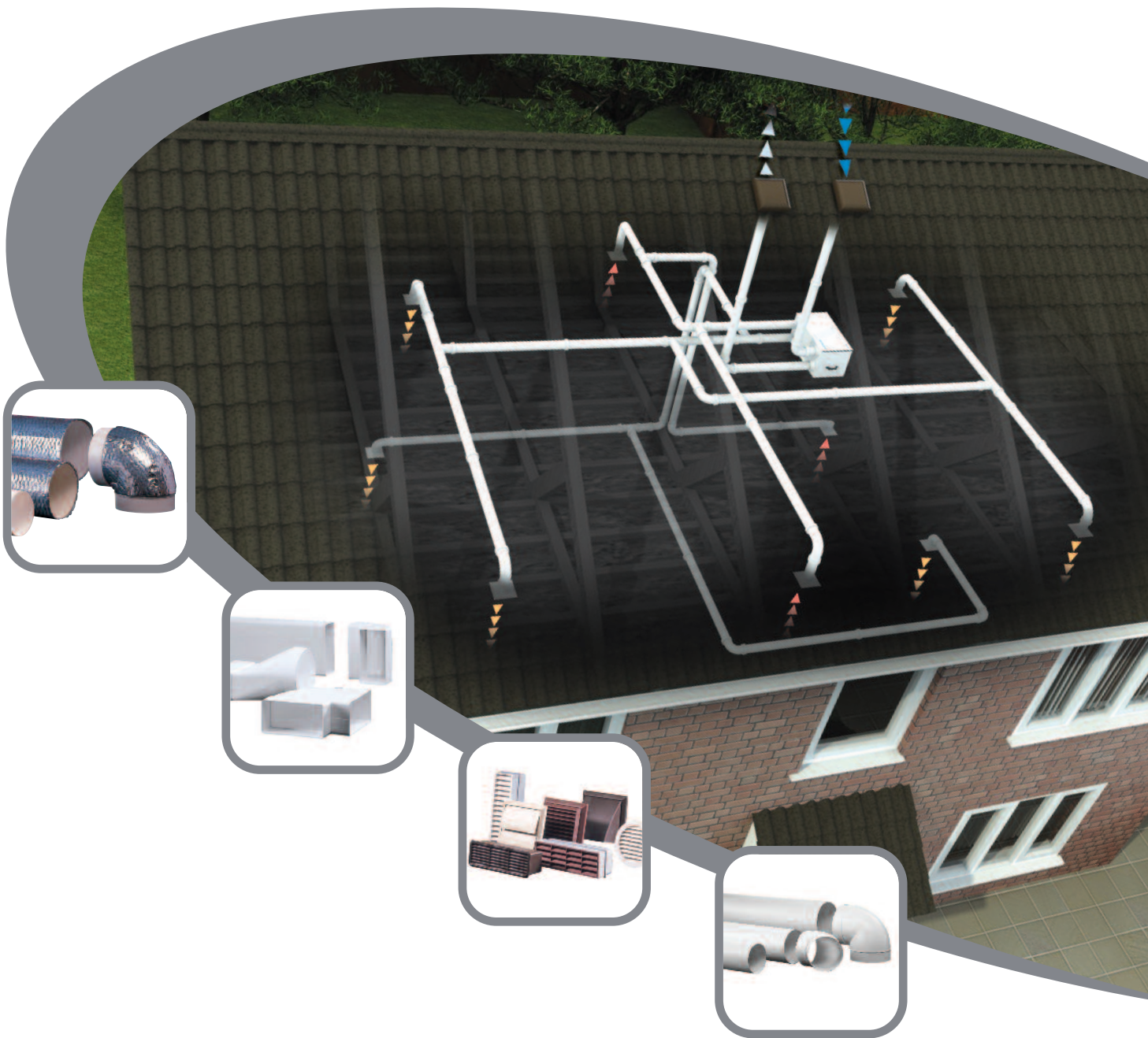


 RESIDENTIAL VENTILATION DUCTING SOLUTIONS

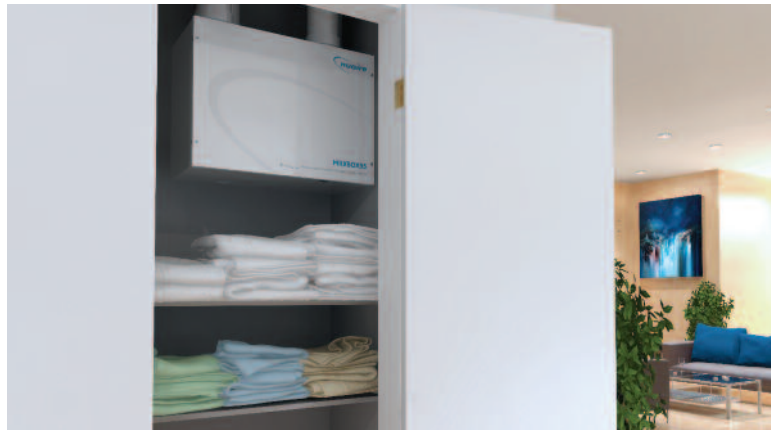


■ NUAIRE'S PEDIGREE

■ ABOUT NUAIRE

Nuaire have designed and manufactured innovative, quality products for home and overseas markets since 1963. The group has extensive resources, is constantly growing, employing over 450 people worldwide with an annual turnover of around £55 million. The company is world renowned for its expertise, commitment to innovation, and the outstanding quality of its products and customer service.

With roots in fans and mechanical ventilation products, Nuaire has continued to expand products and services for residential, commercial and industrial markets so are truly capable of delivering complete ventilation solutions to the built environment.



■ NUAIRE PRODUCTS

From our state of the art manufacturing facilities in South Wales, we offer the widest range of British designed and tested ventilation products.

They include new solar technologies, and address the increasing need to reduce energy consumption and carbon emissions. Products are also designed to simplify installation and commissioning.

■ NUAIRE QUALITY

Nuaire's reputation for quality has grown through a commitment to constant improvement. The company's product testing regime is legendary and its multi-million pound test facilities are considered to be amongst the most modern and comprehensive in the world, ensuring that customers receive the best ventilation products available. The facilities have been designed

to meet the latest industry standards and carry the appropriate approvals, including British Standards Institute and Air Movement and Controls Association. Nuaire has two reverberant chambers (Type D and Type A configurations) test for both aerodynamic and acoustic performance.

DESIGNING WITH YOU



NUAIRE SERVICE

Nuair is renowned throughout the heating & ventilation industry for quality, innovative products. However Nuair also recognises the equal importance of customer service. Caring about our customers is one of the many reasons why thousands of customers keep coming back. Our staff are trained to provide customers with what we believe to be unrivalled design,

application, installation and maintenance advice. However we know the acid test is how our customers perceive us. That is why we regularly issue customer satisfaction surveys to make sure that we are focusing on the needs of our customers.

OUR GUARANTEE

Nuair has a team of experienced technical estimators and system designers who can assist you with advice on all types of ventilation systems, ensuring the best possible solution for your project. Drawings for consideration/ review can be emailed to drawings@nuaire.co.uk or alternatively please call the Residential Applications Team on 02920 858 200.

- 15 years experience ensuring the best solution for your project.
- Compliance to the very latest building regulations and guidance can be provided on SAP.
- Full scheme CAD drawings.
- Expert advice on environmental and sustainability issues.

PVC FLAT DUCTING

FLAT CHANNEL 1m LENGTH

Part Number	Duct Size	Description	Box Quantity	Resistance in PA					
				@8l/s	@13l/s	@21l/s	@29l/s	@37l/s	
PVC510WH	204mm x 60mm	Flat Channel 1m Length	5	0.2	0.4	0.8	1.4	2.2	
PVC4010WH	121mm x 60mm	Flat Channel 1m Length	10	0.5	1.0	2.1	3.5	5.3	
PVC010WH	110mm x 54mm	Flat Channel 1m Length	10	0.7	1.5	3.4	5.8	9.0	



FLAT CHANNEL 1.5m LENGTH

Part Number	Duct Size	Description	Box Quantity	Resistance in PA					
				@8l/s	@13l/s	@21l/s	@29l/s	@37l/s	
PVC515WH	204mm x 60mm	Flat Channel 1.5m Length	5	0.3	0.6	1.3	2.2	3.3	
PVC4015WH	121mm x 60mm	Flat Channel 1.5m Length	10	0.7	1.5	3.1	5.3	7.9	
PVC015WH	110mm x 54mm	Flat Channel 1.5m Length	10	1.2	2.4	5.3	9.0	13.7	



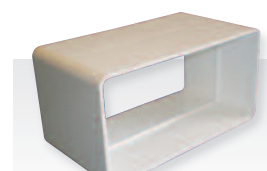
FLAT CHANNEL 2m LENGTH

Part Number	Duct Size	Description	Box Quantity	Resistance in PA					
				@8l/s	@13l/s	@21l/s	@29l/s	@37l/s	
D3-2000	204mm x 60mm	Flat Channel 2m Length	5	0.4	0.8	1.7	2.9	4.4	
D1-2000	110mm x 54mm	Flat Channel 2m Length	10	1.5	3.1	6.7	11.7	17.9	



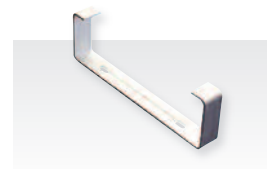
SLIM DUCT CONNECTORS

Part Number	Duct Size	Description	Box Quantity	Resistance in PA					
				@8l/s	@13l/s	@21l/s	@29l/s	@37l/s	
PVC520WH	204mm x 60mm	Slim Duct Connector	10	0	0	0	0	0	
PVC420WH	121mm x 60mm	Slim Duct Connector	10	0	0	0	0	0	
PVC020WH	110mm x 54mm	Slim Duct Connector	20	0	0	0	0	0	



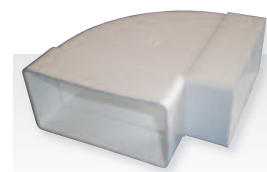
CHANNEL CLIPS

Part Number	Duct Size	Description	Box Quantity	Resistance in PA					
				@8l/s	@13l/s	@21l/s	@29l/s	@37l/s	
PVC122-5WH	204mm x 60mm	Channel Clip	10	0	0	0	0	0	
PVC422WH	121mm x 60mm	Channel Clip	10	0	0	0	0	0	
PVC122WH	110mm x 54mm	Channel Clip	10	0	0	0	0	0	



90° HORIZONTAL BENDS

Part Number	Duct Size	Description	Box Quantity	Resistance in PA					
				@8l/s	@13l/s	@21l/s	@29l/s	@37l/s	
PVC550WH	204mm x 60mm	Horizontal 90° Bend	10	0.6	1.6	4.1	7.9	12.8	
PVC450WH	121mm x 60mm	Horizontal 90° Bend	10	1.9	4.8	12.3	23.3	37.8	
PVC050WH	110mm x 54mm	Horizontal 90° Bend	20	2.6	7.2	19.3	37.2	61	

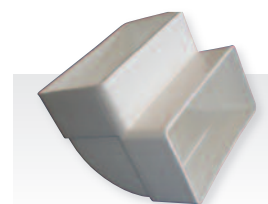


All sizes are internal dimensions

PVC FLAT DUCTING

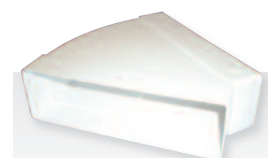
90° VERTICAL BENDS

Part Number	Duct Size	Description	Box Quantity	Resistance in PA				
				@8l/s	@13l/s	@37l/s		
PVC560WH	204mm x 60mm	Vertical 90° Bend	10	0.7	1.9	5.2	10.1	16.6
PVC460WH	121mm x 60mm	Vertical 90° Bend	10	2.1	5.7	14.8	28.1	45.7
PVC060WH	110mm x 54mm	Vertical 90° Bend	20	4.3	11.6	30.7	58.7	95.8



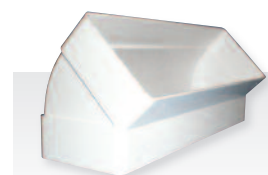
45° HORIZONTAL BEND

Part Number	Duct Size	Description	Box Quantity	Resistance in PA				
				@8l/s	@13l/s	@37l/s		
PVC555WH	204mm x 60mm	Horizontal 45° Bend	10	0	0.3	1.2	2.6	4.5



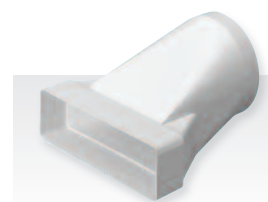
45° VERTICAL BEND

Part Number	Duct Size	Description	Box Quantity	Resistance in PA				
				@8l/s	@13l/s	@37l/s		
PVC575WH	204mm x 60mm	Vertical 45° Bend	10	0	0.3	1.2	2.6	4.6



ADAPTORS

Part Number	Duct Size	Description	Box Quantity	Resistance in PA				
				@8l/s	@13l/s	@37l/s		
PVC570WH	204mm x 60mm	125mm dia Round to Rect. Adaptor	10	0	0.3	1.1	2.5	4.3
PVC470WH	121mm x 60mm	100mm dia Round to Rect. Adaptor	10	0.6	1.3	3.1	5.5	8.6
PVC070WH	110mm x 54mm	100mm dia Round to Rect. Adaptor	20	1.1	2.8	7.2	13.6	22.2



FLAT CHANNEL END CAP

Part Number	Duct Size	Description	Box Quantity	Resistance in PA				
				@8l/s	@13l/s	@37l/s		
PVC518WH	204mm x 60mm	Flat Channel End Cap	1	0	0	0	0	0
PVC018WH	110mm x 54mm	Flat Channel End Cap	1	0	0	0	0	0



PVC FLAT DUCTING

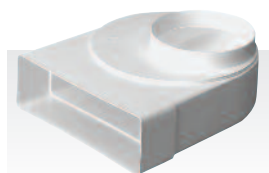
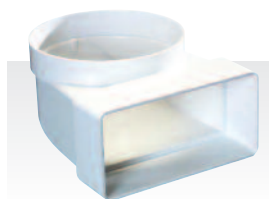
HORIZONTAL TEE PIECE

Part Number	Duct Size	Description	Box Quantity	Resistance in PA					
				@8l/s	@13l/s	@21l/s	@29l/s	@37l/s	
PVC582WH	204mm x 60mm	Horizontal Tee Piece	10	0.9	2.3	5.9	11.2	18.3	
PVC080WH	110mm x 54mm	Horizontal Tee Piece	20	3.5	9.7	25.6	49.2	80.3	



FAN PLENUM

Part Number	Duct Size	Description	Box Quantity	Resistance in PA					
				@8l/s	@13l/s	@21l/s	@29l/s	@37l/s	
PVC440WH	204mm x 60mm	Fan Plenum 100mm dia	10	2.1	5.5	14.3	27.2	44.3	
PVC540WH	204mm x 60mm	Fan Plenum 125mm dia	10	0.5	1.3	3.4	6.4	10.4	
PVC030WH	110mm x 54mm	Fan Plenum 100mm dia	20	2.1	5.9	15.9	31	51	
PVC430WH	121mm x 60mm	Fan Plenum 100mm dia	10	1.8	4.6	11.7	22.1	35.8	
PVC641WH	204mm x 60mm	Fan Plenum 150mm dia	6	0.5	1.4	3.6	6.9	11.3	



PVC641WH

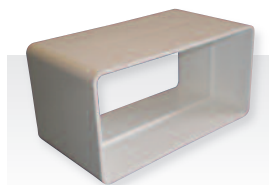
AIRBRICK ADAPTER

Part Number	Duct Size	Description	Box Quantity	Resistance in PA					
				@8l/s	@13l/s	@21l/s	@29l/s	@37l/s	
PVC077WH	110mm x 54mm	Airbrick Adaptor	20	0.4	1	2.4	4.4	7	



FLEXIBLE DUCT CONNECTOR

Part Number	Duct Size	Description	Box Quantity	Resistance in PA					
				@8l/s	@13l/s	@21l/s	@29l/s	@37l/s	
PVC581WH	211mm x 64mm	Flexible Duct Connector	1	0	0	0	0	0	
PVC481WH	121mm x 60mm	Flexible Duct Connector	1	0	0	0	0	0	
PVC381WH	110mm x 54mm	Flexible Duct Connector	1	0	0	0	0	0	

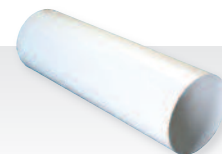


All sizes are internal dimensions

PVC ROUND DUCTING

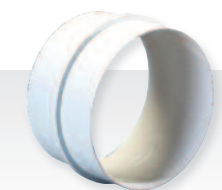
RIGID ROUND PIPE 2M LENGTH

Part Number	Duct Size	Description	Box Quantity	Resistance in PA				
				@8l/s	@13l/s	@37l/s		
PVC1200-4WH	100mm x 2m	100mm dia Rigid Pipe 2m Length	3	0.1	0.3	1	1.9	3.1
PVC1200-5WH	125mm x 2m	125mm dia Rigid Pipe 2m Length	3	0	0.1	0.4	0.8	1.3
PVC1200-6WH	150mm x 2m	150mm dia Rigid Pipe 2m Length	2	0	0	0.2	0.5	0.8



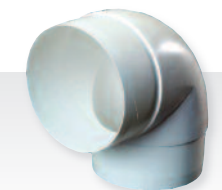
PIPE CONNECTOR

Part Number	Duct Size	Description	Box Quantity	Resistance in PA				
				@8l/s	@13l/s	@37l/s		
PVC493WH	100mm	100mm dia Pipe Connector	10	0	0	0	0	0
PVC593WH	125mm	125mm dia Pipe Connector	10	0	0	0	0	0
PVC693WH	150mm	150mm dia Pipe Connector	10	0	0	0	0	0



90° BEND

Part Number	Duct Size	Description	Box Quantity	Resistance in PA				
				@8l/s	@13l/s	@37l/s		
PVC100IB90	100mm	100mm dia Insulated 90° Elbow Bend	1	1.8	4.4	10.7	19.7	31.4
PVC125IB90	125mm	125mm dia Insulated 90° Elbow Bend	1	0.5	1.4	4	7.9	13
PVC150IB90	150mm	150mm dia Insulated 90° Elbow Bend	1	0.2	0.7	2	4	6.6



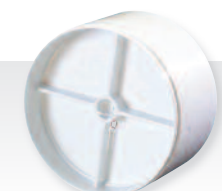
45° BEND

Part Number	Duct Size	Description	Box Quantity	Resistance in PA				
				@8l/s	@13l/s	@37l/s		
PVC491WH	100mm	45° Bend 100mm PVC	10	0.3	0.9	2.7	5.4	8.9
PVC591WH	125mm	45° Bend 125mm PVC	10	0.2	0.5	1.4	2.7	4.5



INLINE BACKDRAUGHT SHUTTER

Part Number	Duct Size	Description	Box Quantity	Resistance in PA				
				@8l/s	@13l/s	@37l/s		
PVC494WH	100mm	Backdraught Shutter 100mm dia	10	12.2	19.6	32	45	58.6
PVC594WH	125mm	Backdraught Shutter 125mm dia	10	9.4	14.8	23.3	31.5	39
PVC694WH	150mm	Backdraught Shutter 150mm dia	10	7.1	11.2	17.4	23.4	29



PIPE HANGER

Part Number	Duct Size	Description	Box Quantity	Resistance in PA				
				@8l/s	@13l/s	@37l/s		
PVC496WH	100mm	Pipe Hanger 100mm	10	0	0	0	0	0
PVC596WH	125mm	Pipe Hanger 125mm	10	0	0	0	0	0
PVC696WH	150mm	Pipe Hanger 150mm	10	0	0	0	0	0

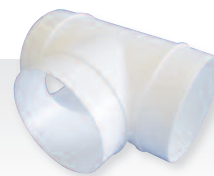


All sizes are internal dimensions

PVC ROUND DUCTING

TEE PIECE (MALE FITTING)

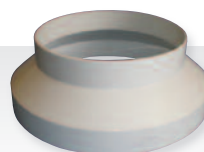
Part Number	Duct Size	Description	Box Quantity	Resistance in PA		
				@8l/s	@13l/s	@37l/s
PVC492M	100mm	Tee Piece 100 x 100 x 100 (Male fitting)	4	0.7	1.6	11.8
PVC592M	125mm	Tee Piece 125 x 125 x 125 (Male Fitting)	1	0.5	1.0	6.1



REDUCING PIECE

Part Number	Duct Size	Description	Box Quantity	Resistance in PA		
				@8l/s	@13l/s	@37l/s
PVC119WH	125mm ID - 100mm OD	Circular Reducing Piece	10	0.6	1.5	10.6
PVC121WH	150mm ID - 125/100mm OD	Circular Reducing Piece	10	0.4	1.4	14

ID = internal diameter OD = outer diameter



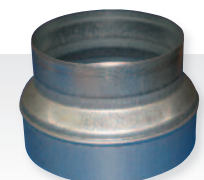
ROUND HOSE CONNECTOR

Part Number	Duct Size	Description	Box Quantity	Resistance in PA		
				@8l/s	@13l/s	@37l/s
PVC380WH	100mm	Round Hose Connector	10	0	0	0



REDUCER

Part Number	Duct Size	Description	Box Quantity	Resistance in PA		
				@8l/s	@13l/s	@37l/s
RED125X100	125mm x 100mm	Reducer 125 x 100 (Male Fitting)	1	0.6	1.2	7.9
RED150X100	150mm x 100mm	Reducer 150 x 100 (Male Fitting)	1	0.5	1.3	9.5



TEE PIECE (FEMALE FITTING)

Part Number	Duct Size	Description	Box Quantity	Resistance in PA		
				@8l/s	@13l/s	@37l/s
TP150X150X100	150mm x 100mm	Tee Piece 150 x 150 x 100 (Female Fitting)	1	0.1	0.4	3



FLAT CHANNEL WALL PLATE

Part Number	Duct Size	Description	Box Quantity	Resistance in PA		
				@8l/s	@13l/s	@37l/s
PVC114-4WH	100mm	Wall Plate	10	0	0	0
PVC114-5WH	125mm	Wall Plate	10	0	0	0

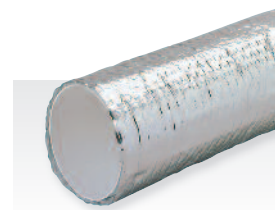


All sizes are internal dimensions

PVC ROUND INSULATED DUCTING

INSULATED RIGID ROUND PIPE 1M LENGTH

Part Number	Duct Size	Description	Box Quantity	Resistance in PA				
				@8l/s	@13l/s	@21l/s	@29l/s	@37l/s
PVC100IRP-1	100mm dia 1m	100mm dia Insulated Pipe 1m	3	0.3	0.5	0.9	1.3	1.7
PVC125IRP-1	125mm dia 1m	125mm dia Insulated Pipe 1m	3	0.1	0.2	0.4	0.65	0.9
PVC150IRP-1	150mm dia 1m	150mm dia Insulated Pipe 1m	2	0.05	0.1	0.2	0.35	0.55



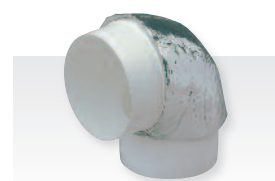
INSULATED RIGID ROUND PIPE 2M LENGTH

Part Number	Duct Size	Description	Box Quantity	Resistance in PA				
				@8l/s	@13l/s	@21l/s	@29l/s	@37l/s
PVC100IRP-2	100mm dia 2m	100mm dia Insulated Pipe 2m	3	0.6	1	1.8	2.6	3.4
PVC125IRP-2	125mm dia 2m	125mm dia Insulated Pipe 2m	3	0.2	0.4	0.8	1.3	1.8
PVC150IRP-2	150mm dia 2m	150mm dia Insulated Pipe 2m	2	0.1	0.2	0.4	0.7	1.1



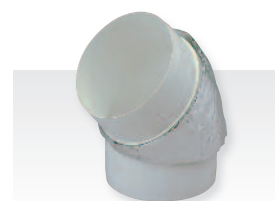
INSULATED 90° BEND

Part Number	Duct Size	Description	Box Quantity	Resistance in PA				
				@8l/s	@13l/s	@21l/s	@29l/s	@37l/s
PVC100IB90	100mm dia	100mm dia Insulated 90° Elbow Bend	1	1.8	4.4	10.7	19.7	31.4
PVC125IB90	125mm dia	125mm dia Insulated 90° Elbow Bend	1	0.5	1.4	4	7.9	13



INSULATED 45° BEND

Part Number	Duct Size	Description	Box Quantity	Resistance in PA				
				@8l/s	@13l/s	@21l/s	@29l/s	@37l/s
PVC100IB45	100mm dia	100mm dia Insulated 45° Elbow Bend	1	0.7	1.7	4.1	7.6	12.2
PVC125IB45	125mm dia	125mm dia Insulated 45° Elbow Bend	1	0.2	0.5	1.4	2.7	4.5



INSULATED TEE PIECE

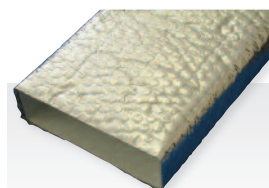
Part Number	Duct Size	Description	Box Quantity	Resistance in PA				
				@8l/s	@13l/s	@21l/s	@29l/s	@37l/s
PVC100ITP	100mm dia	100mm dia Insulated Tee Piece	1	0.7	1.6	4.0	7.4	11.8
PVC125ITP	125mm dia	125mm dia Insulated Tee Piece	1	0.5	1.0	2.2	3.9	6.1
PVC150ITP	150mm dia	150mm dia Insulated Tee Piece	1	0.4	0.6	1.3	2.1	3.0



PVC FLAT INSULATED DUCTING

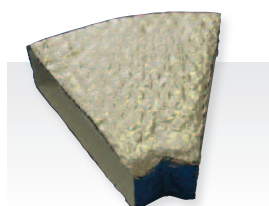
INSULATED FLAT CHANNEL

Part Number	Duct Size	Description	Box Quantity	Resistance in PA					
				@8l/s	@13l/s	@21l/s	@29l/s	@37l/s	
PVC5629WH	204mm x 60mm x 2m	Insulated Flat Channel 2m	5	0.4	0.8	1.7	2.9	4.4	
PVC5628WH	204mm x 60mm x 1.5m	Insulated Flat Channel 1.5m	5	0.3	0.6	1.3	2.2	3.3	
PVC5604WH	204mm x 60mm x 1m	Insulated Flat Channel 1m	5	0.2	0.4	0.8	1.4	2.2	



INSULATED HORIZONTAL BEND

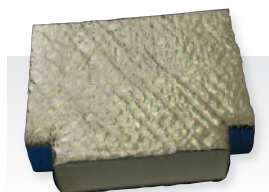
Part Number	Duct Size	Description	Box Quantity	Resistance in PA					
				@8l/s	@13l/s	@21l/s	@29l/s	@37l/s	
PVC5616WH	204mm x 60mm	Insulated 45° Horizontal bend	10	0	0.3	1.2	2.6	4.5	
PVC5605WH	204mm x 60mm	Insulated 90° Horizontal bend	10	0.6	1.6	4.1	7.9	12.8	



45° Bend

INSULATED HORIZONTAL TEE-PIECE

Part Number	Duct Size	Description	Box Quantity	Resistance in PA					
				@8l/s	@13l/s	@21l/s	@29l/s	@37l/s	
PVC5630WH	204mm x 60mm	Insulated Tee piece	10	0.9	2.3	5.9	11.2	18.3	



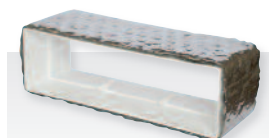
INSULATED VERTICAL BEND

Part Number	Duct Size	Description	Box Quantity	Resistance in PA					
				@8l/s	@13l/s	@21l/s	@29l/s	@37l/s	
PVC5612WH	204mm x 60mm	Insulated 90° Vertical Bend	10	0.7	1.9	5.2	10.1	16.6	



INSULATED CONNECTOR

Part Number	Duct Size	Description	Box Quantity	Resistance in PA					
				@8l/s	@13l/s	@21l/s	@29l/s	@37l/s	
PVC5608WH	204mm x 60mm	204mm x 60mm Insulated Connector	10	0	0	0	0	0	



All sizes are internal dimensions

PVC FLEXIBLE DUCTING

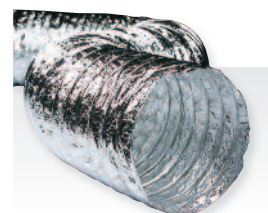
FLEXIBLE RECTANGULAR DUCTING 3M LENGTH

Part Number	Duct Size	Description	Box Quantity	Resistance in PA				
				@8l/s	@13l/s	@37l/s		
PVC333WH	114mm x 57mm	Rectangular Flexible Duct PVC (3m length)	1	1	2.7	7.2	13.9	22.7
PVC433WH	121mm x 60mm	Rectangular Flexible Duct PVC (3m length)	1	0.4	0.8	1.7	2.8	4.3
PVC533WH	211mm x 64mm	Rectangular Flexible Duct PVC (3m length)	1	0.2	0.6	1.5	2.6	4.1



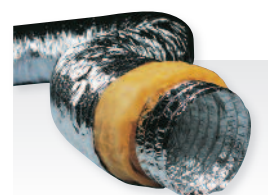
FLEXIBLE ALUMINIUM DUCTING 5M LENGTH

Part Number	Duct Size	Description	Box Quantity	Resistance in PA				
				@8l/s	@13l/s	@37l/s		
FLD100	5m length 100mm dia	Flexible Ducting Aluminium 100mm	1	0.2	0.6	1.7	3.4	5.6
FLD125	5m length 125mm dia	Flexible Ducting Aluminium 125mm	1	0.4	0.7	1.4	2.5	3.8
FLD150	5m length 150mm dia	Flexible Ducting Aluminium 150mm	1	0.2	0.3	0.6	1	1.5
FLD200	5m length 200mm dia	Flexible Ducting Aluminium 200mm	1	0.2	0.3	0.6	0.9	1.1



FLEXIBLE INSULATED DUCTING 5M LENGTH

Part Number	Duct Size	Description	Box Quantity	Resistance in PA				
				@8l/s	@13l/s	@37l/s		
FLDI100	5m length 100mm dia	Insulated Flexible Ducting 100mm	1	0.2	0.6	1.7	3.4	5.6
FLDI125	5m length 125mm dia	Insulated Flexible Ducting 125mm	1	0.4	0.7	1.4	2.5	3.8
FLDI150	5m length 150mm dia	Insulated Flexible Ducting 150mm	1	0.2	0.3	0.6	1	1.5
FLDI200	5m length 200mm dia	Insulated Flexible Ducting 200mm	1	0.2	0.3	0.6	0.9	1.1



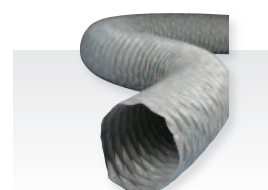
SEMI-RIGID ACOUSTIC DUCTING 3M LENGTH

Part Number	Duct Size	Description	Box Quantity	Resistance in PA				
				@8l/s	@13l/s	@37l/s		
SRDI100	3m length 100mm dia	Semi-rigid Acoustic Ducting 100mm	1	0.3	0.6	1.5	2.5	4.4
SRDI125	3m length 125mm dia	Semi-rigid Acoustic Ducting 125mm	1	0.1	0.1	0.3	0.7	1.5
SRDI150	3m length 150mm dia	Semi-rigid Acoustic Ducting 150mm	1	0	0	0.1	0.3	1.3
SRDI200	3m length 200mm dia	Semi-rigid Acoustic Ducting 200mm	1	0	0	0	0	0.2



FLEXIBLE DUCTING 3M LENGTH

Part Number	Duct Size	Description	Box Quantity	Resistance in PA				
				@8l/s	@13l/s	@37l/s		
PVC363WH	3m length 100mm dia	Flexible Ducting 100mm	1	0.2	0.6	1.7	3.4	5.7



Resistances are per metre
All sizes are internal dimensions

GRILLES AND TERMINALS

WHITE STEEL EXTRACT / SUPPLY VALVES

Part Number	Duct Size	Description	Box Quantity	Resistance in PA				
				@8l/s	@13l/s	@21l/s	@29l/s	@37l/s
V100S	100mm dia spigot	Extract/Supply Valve (white only)	1	7	14	34	85	130
V125S	125mm dia spigot	Extract/Supply Valve (white only)	1	6	10	19	35	55

The above resistances are based on 10mm opening setting

FILTERED INLET GRILLE

Part Number	Duct Size	Description	Box Quantity	Resistance in PA				
				@8l/s	@13l/s	@21l/s	@29l/s	@37l/s
100IG	125mm x 125mm OD	Filtered Inlet Grilles (white only) 100mm dia	1	5.8	14.5	37.1	70.2	113.8

OD = outer diameter

LOUVRED GRILLE WITH FLYSCREEN

Part Number	Duct Size	Description	Box Quantity	Resistance in PA				
				@8l/s	@13l/s	@21l/s	@29l/s	@37l/s
PVC104WH	100mm dia spigot	Louvred Grille with Flyscreen	20	3.4	7.9	18.9	34.6	54.8
PVC504WH	125mm dia spigot	Louvred Grille with Flyscreen	10	0.8	1.7	3.8	6.6	10.2
PVC604WH	150mm dia spigot	Louvred Grille with Flyscreen	10	0.7	1.3	2.8	4.9	7.4
PVC105WH	110mm x 54mm	Louvred Grille with Flyscreen	20	6.6	15.8	38.4	70.8	112.9

LOW RESISTANCE LOUVRED GRILLE NO FLYSCREEN

Part Number	Duct Size	Description	Box Quantity	Resistance in PA				
				@8l/s	@13l/s	@21l/s	@29l/s	@37l/s
PVC104LR	100mm dia spigot	Low Resistance Louvred Grille	20	0.6	1.6	3.9	7.3	11.8

AIR BRICK

Part Number	Duct Size	Description	Box Quantity	Resistance in PA				
				@8l/s	@13l/s	@21l/s	@29l/s	@37l/s
PVC501WH	201mm x 57mm	Air Brick - with Shutter	20	6.4	10.1	17.3	26.1	36.5
PVC505NS	201mm x 57mm	Air Brick - no Shutter	20	2.2	5.5	13.9	26.0	41.8

DOUBLE AIR BRICK

Part Number	Duct Size	Description	Box Quantity	Resistance in PA				
				@8l/s	@13l/s	@21l/s	@29l/s	@37l/s
PVC905WH	204mm x 60mm	Double Air Brick	10	0.4	0.9	2.1	3.8	5.9

All sizes are internal dimensions

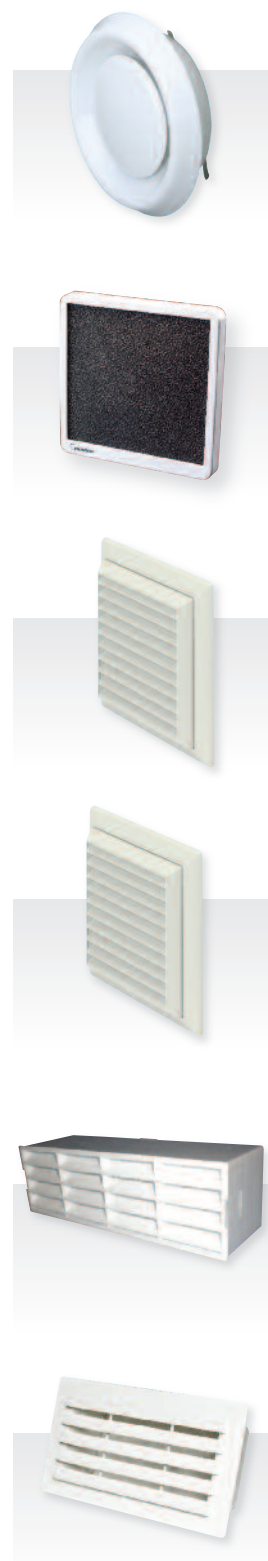
Nuair external grilles supplied White (RAL9010) as standard.

For alternative colours please replace the WH at the end of the product code with

BR for Brown (RAL 8017) ●

COT for Beige-Cotswold (RAL 1001) ●

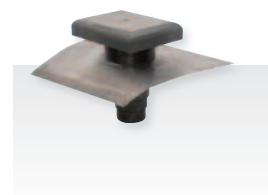
TC for Red-Terracotta (RAL 8012) ●



GRILLES AND TERMINALS

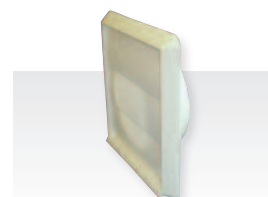
UNIVERSAL COWL

Part Number	Duct Size	Description	Box Quantity	Resistance in PA					
				@8l/s	@13l/s	@21l/s	@29l/s	@37l/s	
PVC4411	100mm - 150mm dia fan spigot	Universal 100 - 160mm Cowl	1	0.5	0.9	1.7	2.6	3.7	



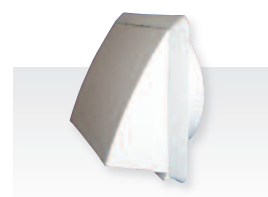
GRAVITY SHUTTER WALL OUTLET

Part Number	Duct Size	Description	Box Quantity	Resistance in PA					
				@8l/s	@13l/s	@21l/s	@29l/s	@37l/s	
PVC100WH	100mm dia spigot	Wall Outlet with Gravity Flaps	20	4.8	6.9	9.8	11.7	12.8	
PVC101WH	110mm x 54mm	Wall Outlet with Gravity Flaps	20	6.2	8.6	11.6	13.6	14.6	
PVC506WH	125mm dia spigot	Wall Outlet with Gravity Flaps	10	3.6	5.5	8.1	10.1	11.5	



COWLED WALL OUTLET WITH DAMPER

Part Number	Duct Size	Description	Box Quantity	Resistance in PA					
				@8l/s	@13l/s	@21l/s	@29l/s	@37l/s	
PVC102WH	100mm dia spigot	Cowled Wall Outlet with Damper	20	2.6	4.4	8.1	12.9	18.8	
PVC103WH	110mm x 54mm	Cowled Wall Outlet with Damper	20	1.8	3.8	9.0	16.5	26.4	
PVC502WH	125mm dia spigot	Cowled Wall Outlet with Damper	10	3.6	5.5	8.0	10.1	11.6	



ROOF COWL

Part Number	Duct Size	Description	Box Quantity	Resistance in PA					
				@8l/s	@13l/s	@21l/s	@29l/s	@37l/s	
4RC	100mm dia spigot	Roof Cowl 100mm	1	2.3	6	15.7	29.9	48.7	



WALL COWL

Part Number	Duct Size	Description	Box Quantity	Resistance in PA					
				@8l/s	@13l/s	@21l/s	@29l/s	@37l/s	
4WC	100mm dia spigot	Wall Cowl 100mm	1	2.2	6.2	16.4	31.6	51.5	



All sizes are internal dimensions

Nuaire external grilles supplied White (RAL9010) as standard.

For alternative colours please replace the WH at the end of the product code with

BR for Brown (RAL 8017) ●

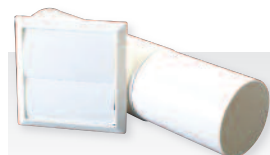
COT for Beige-Cotswold (RAL 1001) ●

TC for Red-Terracotta (RAL 8012) ●

GRILLES AND TERMINALS

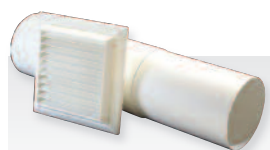
WALL MOUNTING SHUTTERS

Part Number	Duct Size	Description	Box Quantity	Resistance in PA				
				@8l/s	@13l/s	@37l/s		
PVCWALL/1	100mm dia fan spigot	Wall Mounting Gravity Operated Anti-backdraught Shutters and Telescopic Wall Duct 300-550mm	1	3.4	5.3	8.1	10.9	13.6



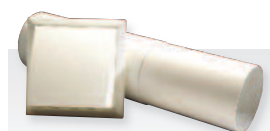
WALL MOUNTING LOUVRE

Part Number	Duct Size	Description	Box Quantity	Resistance in PA				
				@8l/s	@13l/s	@37l/s		
PVCWALL/2	100mm dia fan spigot	Wall Mounting Weather Louvre Complete with Fly Screen and Telescopic Wall Duct 300-550mm	1	3.7	9.6	24.9	47.4	77



WALL MOUNTING RECTANGULAR COWLED OUTLET

Part Number	Duct Size	Description	Box Quantity	Resistance in PA				
				@8l/s	@13l/s	@37l/s		
PVCWALL/3	100mm dia fan spigot	Wall Mounting Rectangular Cowled Outlet Complete with Anti-backdraught Damper and Telescopic Wall Duct 300-550mm	1	3.5	7.3	15.8	27.2	41.7



WALL MOUNTING CIRCULAR COWLED OUTLET

Part Number	Duct Size	Description	Box Quantity	Resistance in PA				
				@8l/s	@13l/s	@37l/s		
PVCWALL/4	100mm dia fan spigot	Wall Mounting Circular Cowled Outlet with Telescopic Wall Duct 300-550mm	1	2.3	6	15.4	29.2	47.2



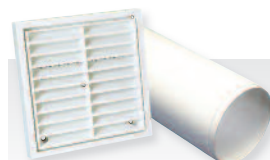
WALL MOUNTING AIR BRICK

Part Number	Duct Size	Description	Box Quantity	Resistance in PA				
				@8l/s	@13l/s	@37l/s		
PVCWALL/5	100mm dia fan spigot	Wall Mounting Air Brick with Reducer 155mm Length of 110mm x 54mm Duct and Rectangular to 100mm dia. Adaptor	1	10.9	17.7	30.5	45.6	62.9



WALL MOUNTING WEATHER LOUVRE

Part Number	Duct Size	Description	Box Quantity	Resistance in PA				
				@8l/s	@13l/s	@37l/s		
PVCWALL/6	100mm dia fan spigot	Low Resistance Wall Mounting Weather Louvre and Telescopic Wall Duct 300-550mm	1	0.6	1.6	4	7.4	12



HIGH RISE

Part Number	Duct Size	Description	Box Quantity	Resistance in PA				
				@8l/s	@13l/s	@37l/s		
PVC2447T	100mm dia fan spigot	High Rise 100mm Round Cowl 2447T	1	6.5	17.2	44.9	85.7	139.5



Nuair external grilles supplied White (RAL9010) as standard.

For alternative colours please replace the WH at the end of the product code with

BR for Brown (RAL 8017) ●

COT for Beige-Cotswold (RAL 1001) ●

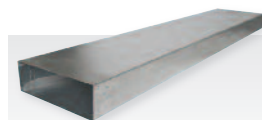
TC for Red-Terracotta (RAL 8012) ●

ATTENUATORS & ADDITIONAL ANCILLARIES

SLIMDUCT SILENCER

Part Number	Duct Size	Description	Box Quantity	Resistance in PA					
				@8l/s	@13l/s	@21l/s	@29l/s	@37l/s	
MEV-SIL10	204mm x 60mm	Slimduct Silencer 1000mm	1	0.7	1.3	2.4	3.4	4.6	
MEV-SIL15	204mm x 60mm	Slimduct Silencer 1500mm	1	0.2	0.8	2.3	4.6	7.7	
MEV-SIL21	204mm x 60mm	Slimduct Silencer 2100mm	1	0.7	1.6	3.6	6.6	10.4	

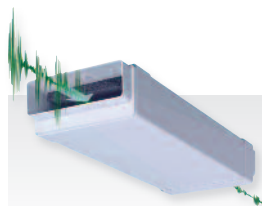
For noise insertion details please contact Nuairé



SLIMDUCT SILENCER

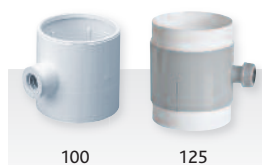
Part Number	Duct Size	Description	Box Quantity	Resistance in PA					
				@8l/s	@13l/s	@21l/s	@29l/s	@37l/s	
PVCSIL-500	204mm x 60mm	204mm x 60mm Slimduct Silencer 500mm	1	0.2	0.6	1.9	3.8	6.5	
PVCSIL-1000	204mm x 60mm	204mm x 60mm Slimduct Silencer 1000mm	1	0.2	0.8	2.3	4.6	7.7	
PVCSIL-1500	204mm x 60mm	204mm x 60mm Slimduct Silencer 1500mm	1	0.7	1.6	3.6	6.6	10.4	

For noise insertion details please see page 17



CONDENSATION TRAP

Part Number	Duct Size	Description	Box Quantity	Resistance in PA					
				@8l/s	@13l/s	@21l/s	@29l/s	@37l/s	
CONTRAP100	100mm	Condensation trap 100mm dia	10	0.3	1.0	3.0	6.1	10.3	
CONTRAP125	125mm	Condensation trap 125mm dia	1	0.3	1.0	3.0	6.1	10.3	



INLINE CONDENSATE DRAIN

Part Number	Duct Size	Description	Box Quantity	Resistance in PA					
				@8l/s	@13l/s	@21l/s	@29l/s	@37l/s	
MVHR-DRAIN	22mm	Inline Condensate Drain	1	0	0	0	0	0	



DYNO TIES

Part Number	Duct Size	Description	Box Quantity	Resistance in PA					
				@8l/s	@13l/s	@21l/s	@29l/s	@37l/s	
DT33	150-200mm OD	Dyno Ties Up To 200mm dia	1	0	0	0	0	0	

OD = outer diameter



DUCT ACCESSORIES

Part Number	Duct Size	Description	Box Quantity	Resistance in PA					
				@8l/s	@13l/s	@21l/s	@29l/s	@37l/s	
PVCDSEAL	N/A	Duct Sealant	1	0	0	0	0	0	
PVCS0TP45	N/A	Aluminium Duct Tape 45m	1	0	0	0	0	0	



ATTENUATORS & ADDITIONAL ANCILLARIES

CIRCULAR FIRE DAMPER

Part Number	Duct Size	Description	Box Quantity	Resistance in PA		
				@8l/s	@13l/s	@37l/s
CFD-100	100mm	Circular Fire Damper 100mm dia	1	5.6	8.7	36.2
CFD-125	125mm	Circular Fire Damper 125mm dia	1	0	0.5	10.2
CFD-150	150mm	Circular Fire Damper 150mm dia	1	0	0	1.9



CIRCULAR FIRE DAMPER AIR VALVE

Part Number	Duct Size	Description	Box Quantity	Resistance in PA		
				@8l/s	@13l/s	@37l/s
VFD-100	100mm	Circular Fire Damper Air Valve 100mm dia	1	1	5.7	92.7
VFD-125	125mm	Circular Fire Damper Air Valve 125mm dia	1	0	2.6	42.8
VFD-150	150mm	Circular Fire Damper Air Valve 150mm dia	1	0	1.7	23.7



FIRE WRAP

Part Number	Duct Size	Description	Box Quantity	Resistance in PA		
				@8l/s	@13l/s	@37l/s
PVC087-110X50	110mm x 54mm	Fire Wrap	1	0	0	0
PVC587-204X60	204mm x 60mm	Fire Wrap	1	0	0	0



PVC588	125mm	Intumescent Fire Break	1	0	0	0
--------	-------	------------------------	---	---	---	---



FW110X54	110mm x 54mm	Fire Wrap	1	0	0	0
FW204X60	204mm x 60mm	Fire Wrap	1	0	0	0
FWS110X54	110mm x 54mm	Fire Collar	1	0	0	0
FWS204X60	204mm x 60mm	Fire collar	1	0	0	0



Wrap



Collar

DUCT ACCESSORIES

Part Number	Duct Size	Description	Box Quantity	Resistance in PA		
				@8l/s	@13l/s	@37l/s
PVCFSEAL	N/A	Intumescent Duct Sealant	1	0	0	0

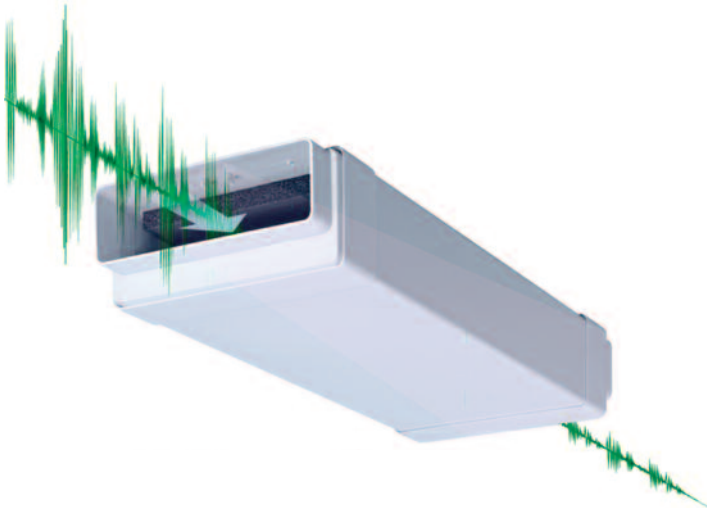


All sizes are internal dimensions

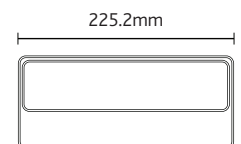
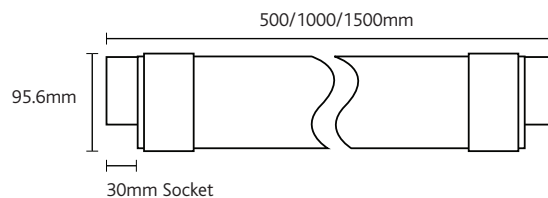
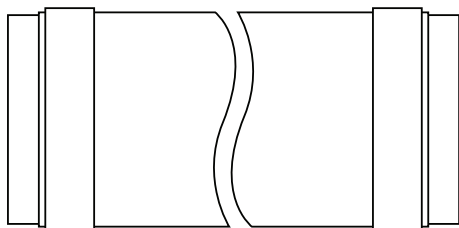
NOISE SOLUTIONS

INLINE ATTENUATION

AVAILABLE IN 0.5M, 1M & 1.5M LENGTHS



- **Regulation driven** - to reduce duct noise for designers "Domestic Compliance Guide 2010" and noise requirements Part F 2010
- **Corrosion proof** - lightweight PVC removes the risk of corrosion
- **Reduce cross talk** - room to room noise
- **Prevents noise ingress** - for inner city development
- **Space saving** - slimline, low profile design for integration within your ducting system



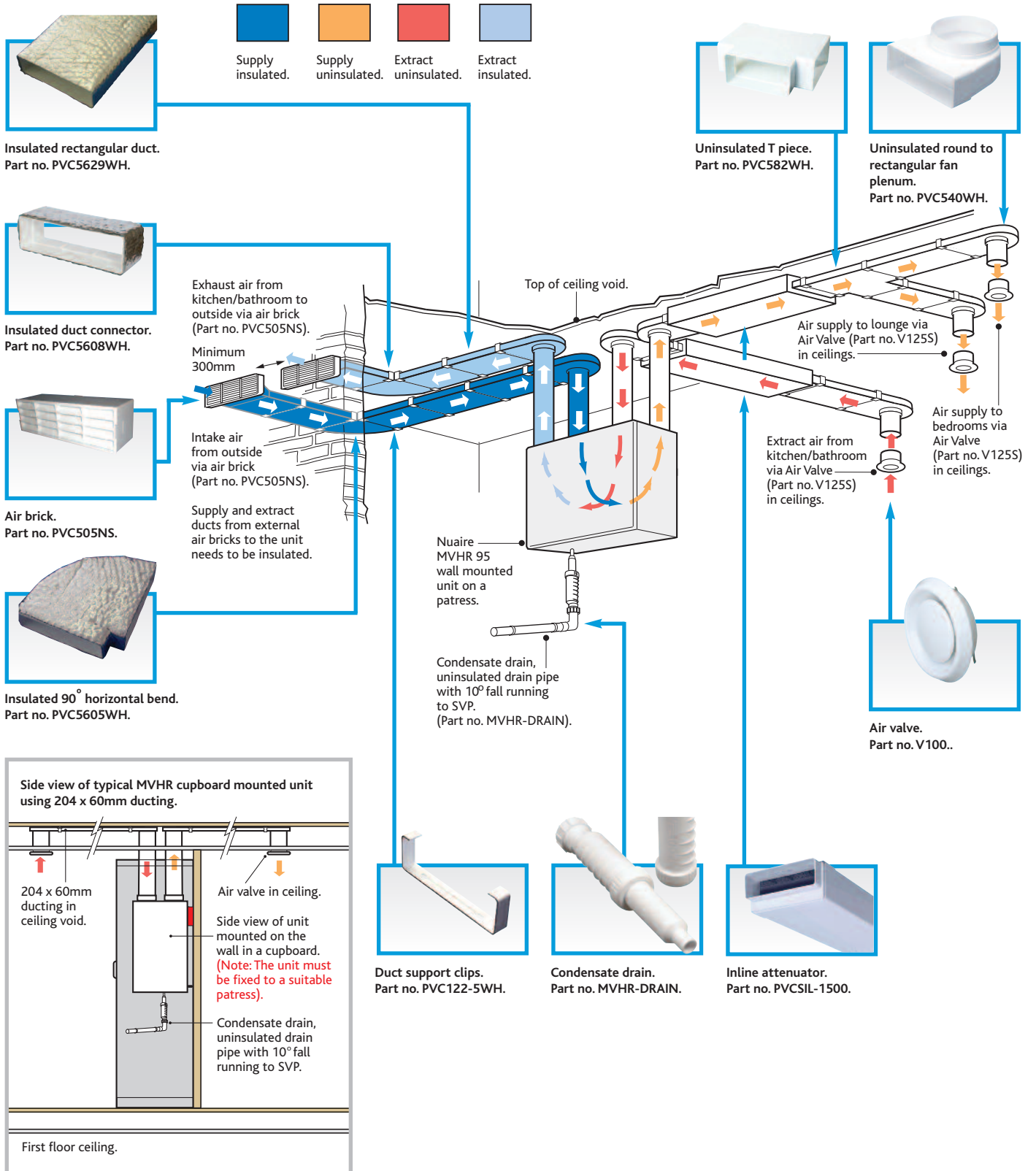
SOUND ABSORPTION CHART

Silencer Code	125 Hz	250 Hz	500 Hz	1k Hz	2k Hz	4k Hz	8k Hz
PVCSIL-500	10.8	5.6	6.2	7.5	18.9	34.3	31.7
PVCSIL-1000	10.1	6.6	8.3	11.6	40	49.8	51.4
PVCSIL-1500	9.9	8.2	11.4	16.1	44	53.5	53

Tested by SRL Test Report No. C/08/51/20594/R02

MRXBOX95 WALL

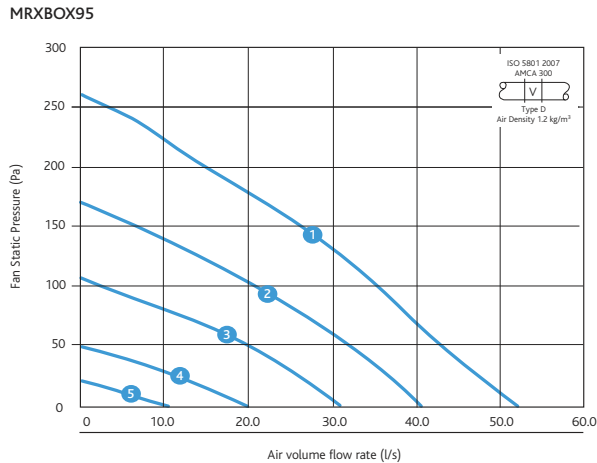
TYPICAL MVHR DUCTED ARRANGEMENT FOR A WALL MOUNTED UNIT USING RECTANGULAR 204 x 60MM DUCTING



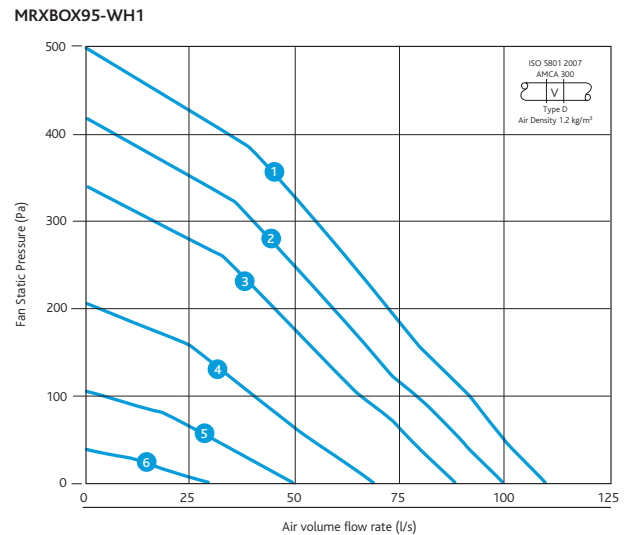


MRXBOX95 WALL

Performance - MRXBOX95-WALL



Performance - MRXBOX95-WH1



MRXBOX95-WALL

ELECTRICAL & SOUND

Curve	Maximum power consumption (Watts)		Sound Power Levels dB re 1pW								dBA @3m
			63	125	250	500	1K	2K	4K	8K	
1	71	Open inlet	45	41	48	47	41	39	24	24	30
		Open outlet	48	51	57	59	54	47	39	33	41
		Breakout	51	50	53	51	43	38	30	26	33
2	39	Open inlet	44	39	46	44	36	34	20	19	26
		Open outlet	44	48	52	53	48	41	29	25	36
		Breakout	50	48	51	48	38	33	25	21	30
3	21	Open inlet	42	38	43	37	31	26	20	17	21
		Open outlet	42	46	49	49	42	35	23	19	31
		Breakout	48	46	47	44	32	27	19	15	26
4	10	Open inlet	40	35	39	32	23	18	12	9	16
		Open outlet	40	43	44	43	33	20	14	13	24
		Breakout	46	43	43	38	23	18	10	6	21
5	5	Open inlet	35	29	30	20	5	-	-	-	<10
		Open outlet	36	38	37	33	18	11	-	-	15
		Breakout	42	38	36	28	8	3	-	-	13

Hemispherical Free field dBA The maximum power consumption shown above (Watts) is consumed on units running continuously, not taking into account any heat recovery saving and based on SAP Appendix Q testing.

SAP Appendix Q Test Results

Application	Specific fan power (W/l/s)	Heat exchange efficiency %	Energy Saving Trust Best Practice Performance Compliant
Kitchen Plus 1 wet room	0.59	92	Yes
Kitchen Plus 2 wet rooms	0.68	91	Yes
Kitchen Plus 3 wet rooms	0.83	90	Yes

MRXBOX95-WH1

ELECTRICAL & SOUND

Curve	Maximum power consumption (Watts)		Sound Power Levels dB re 1pW								dBA @3m
			63	125	250	500	1K	2K	4K	8K	
1	150	Open inlet	48	51	58	49	47	39	25	<16	31
		Open outlet	56	63	67	67	62	60	50	41	47
		Breakout	56	61	59	53	43	40	25	<16	33
2	114	Open inlet	48	50	57	48	45	37	23	<16	30
		Open outlet	56	62	66	66	60	58	48	39	45
		Breakout	56	60	58	52	41	38	23	<16	32
3	75	Open inlet	47	50	56	46	43	35	21	<16	29
		Open outlet	55	62	65	64	58	56	46	37	44
		Breakout	55	60	57	50	39	36	21	<16	31
4	36	Open inlet	46	48	53	43	37	29	<16	-	25
		Open outlet	54	60	62	61	52	50	40	31	40
		Breakout	54	58	54	47	33	30	<16	<16	28
5	14	Open inlet	44	45	50	38	30	22	<16	<16	22
		Open outlet	52	57	59	56	45	43	33	24	35
		Breakout	52	55	51	42	26	23	<16	<16	24
6	8	Open inlet	41	42	44	30	19	<16	<16	<16	<16
		Open outlet	49	54	53	48	34	32	22	<16	27
		Breakout	49	52	45	34	<16	<16	<16	<16	19

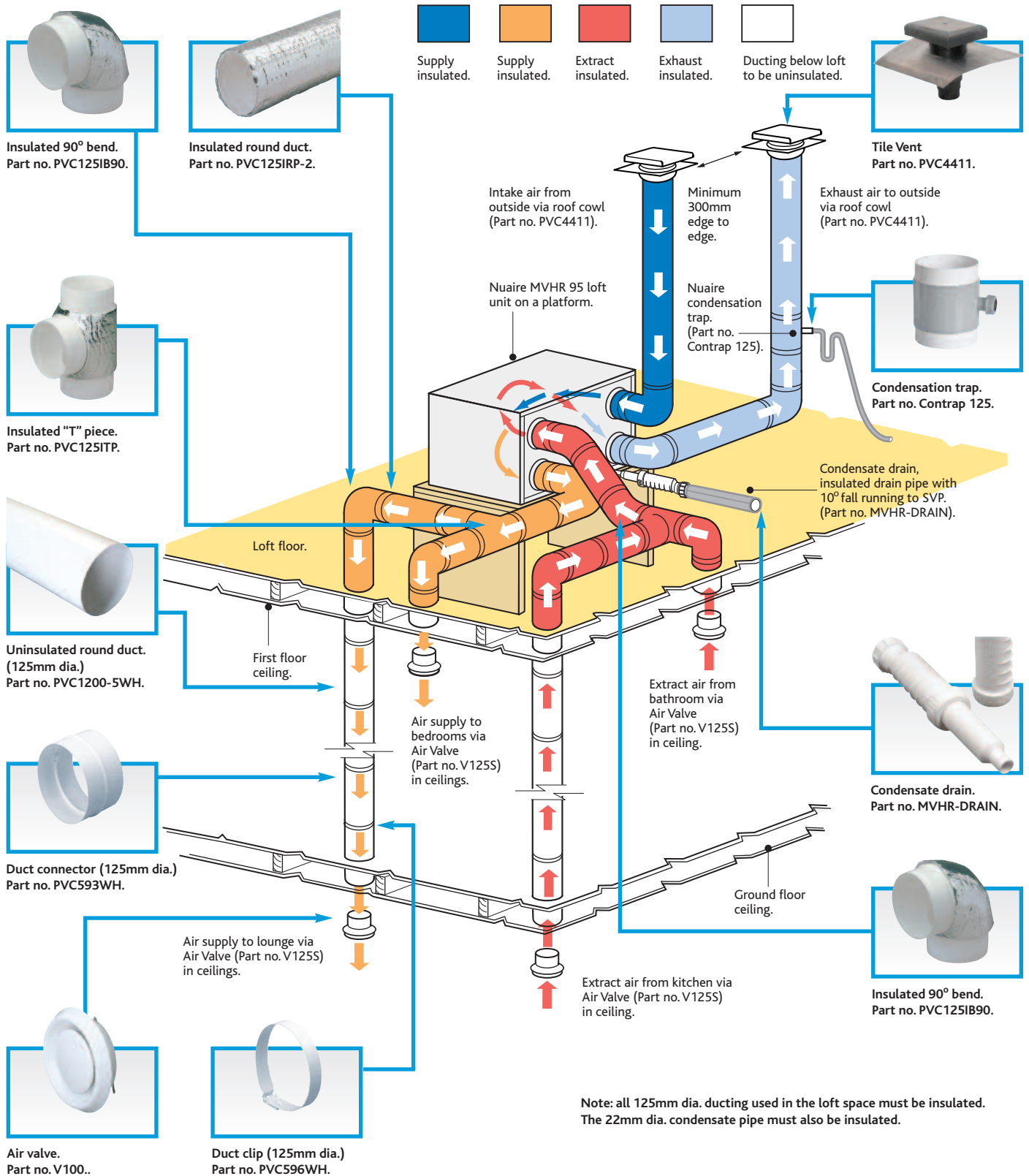
Hemispherical Free field dBA The maximum power consumption shown above (Watts) is consumed on units running continuously, not taking into account any heat recovery saving and based on SAP Appendix Q testing.

SAP Appendix Q Test Results

Application	Specific fan power (W/l/s)	Heat exchange efficiency %	Energy Saving Trust Best Practice Performance Compliant
Kitchen Plus 1 wet room	0.41	91	Yes
Kitchen Plus 2 wet rooms	0.40	91	Yes
Kitchen Plus 3 wet rooms	0.46	90	Yes
Kitchen Plus 4 wet room	0.53	90	Yes
Kitchen Plus 5 wet rooms	0.62	89	Yes
Kitchen Plus 6 wet rooms	0.72	88	Yes
Kitchen Plus 7 wet rooms	0.83	87	Yes

MRXBOX95-LOFT

TYPICAL MVHR DUCTED ARRANGEMENT FOR A LOFT MOUNTED UNIT USING 125MM DIA. DUCTING

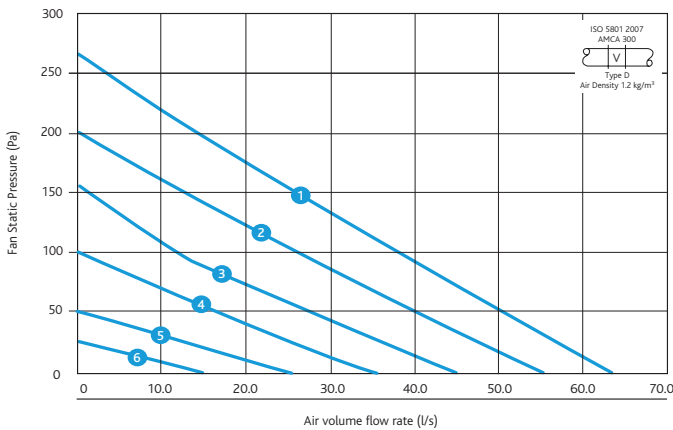


MRXBOX95-LOFT



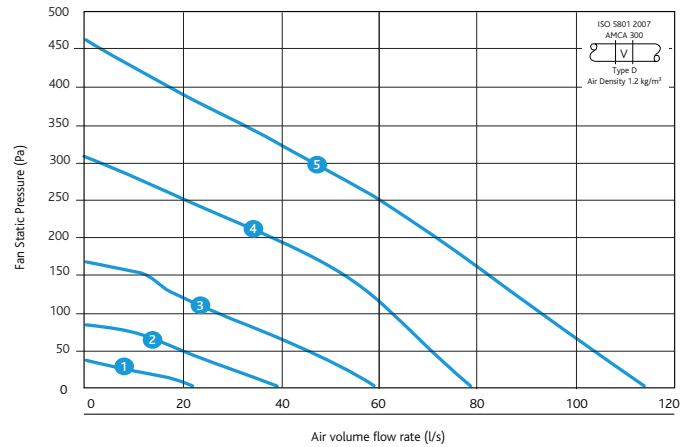
Performance - MRXBOX95-LOFT

MRXBOX95-LOFT



Performance - MRXBOX95-LH1

MRXBOX95-LH1



MRXBOX95-LOFT

ELECTRICAL & SOUND

Curve	Maximum power consumption (Watts)		Sound Power Levels dB re 1pW								dBA @3m	
			63	125	250	500	1K	2K	4K	8K		
1	73	Open inlet	38	42	48	43	42	32	29	29	28	
		Open outlet	40	56	56	59	54	51	45	34	42	
		Breakout	43	55	53	51	43	42	36	31	34	
2	51	Open inlet	37	41	46	41	38	28	25	25	25	
		Open outlet	39	55	54	57	50	47	41	30	39	
		Breakout	42	54	51	49	39	38	32	27	32	
3	31	Open inlet	34	40	43	35	37	28	22	19	23	
		Open outlet	38	49	51	52	48	43	35	30	35	
		Breakout	38	48	48	44	37	34	26	27	27	
4	20	Open inlet	33	38	44	32	32	23	17	14	20	
		Open outlet	37	48	49	49	43	38	30	25	32	
		Breakout	37	46	46	41	32	29	21	22	24	
5	12	Open inlet	30	34	38	23	19	10	4	-	13	
		Open outlet	34	44	43	40	30	25	17	12	22	
		Breakout	34	42	40	42	19	16	8	9	22	
6	7	Open inlet	28	32	32	20	14	5	-	-	<10	
		Open outlet	32	41	40	37	25	20	12	7	19	
		Breakout	32	40	37	29	14	11	3	4	<10	

Hemispherical Free field dBA The maximum power consumption shown above (Watts) is consumed on units running continuously, not taking into account any heat recovery saving and based on SAP Appendix Q testing.

SAP Appendix Q Test Results

Application	Specific fan power (W/l/s)	Heat exchange efficiency %	Energy Saving Trust Best Practice Performance Compliant
Kitchen Plus 1 wet room	0.69	92	Yes
Kitchen Plus 2 wet rooms	0.76	92	Yes
Kitchen Plus 3 wet rooms	0.85	90	Yes

MRXBOX95-LH1

ELECTRICAL & SOUND

Curve	Maximum power consumption (Watts)		Sound Power Levels dB re 1pW								dBA @3m	
			63	125	250	500	1K	2K	4K	8K		
1	11	Open inlet	36	34	34	26	24	20	11	4	11	
		Open outlet	37	38	38	37	30	24	21	8	16	
		Breakout	37	47	38	34	20	16	7	6	14	
2	20	Open inlet	38	35	41	29	27	23	12	12	14	
		Open outlet	43	47	47	46	39	37	30	23	25	
		Breakout	41	47	47	42	29	31	22	21	22	
3	44	Open inlet	42	38	50	38	34	28	17	17	25	
		Open outlet	43	52	55	56	49	49	40	33	38	
		Breakout	43	51	52	8	38	40	31	30	28	
4	90	Open inlet	43	42	55	44	42	35	22	22	32	
		Open outlet	48	56	64	64	58	58	50	40	47	
		Breakout	45	53	55	52	44	46	37	36	35	
5	160	Open inlet	45	44	57	50	48	40	27	27	35	
		Open outlet	51	58	67	69	67	63	55	46	53	
		Breakout	47	56	58	57	52	54	45	44	41	

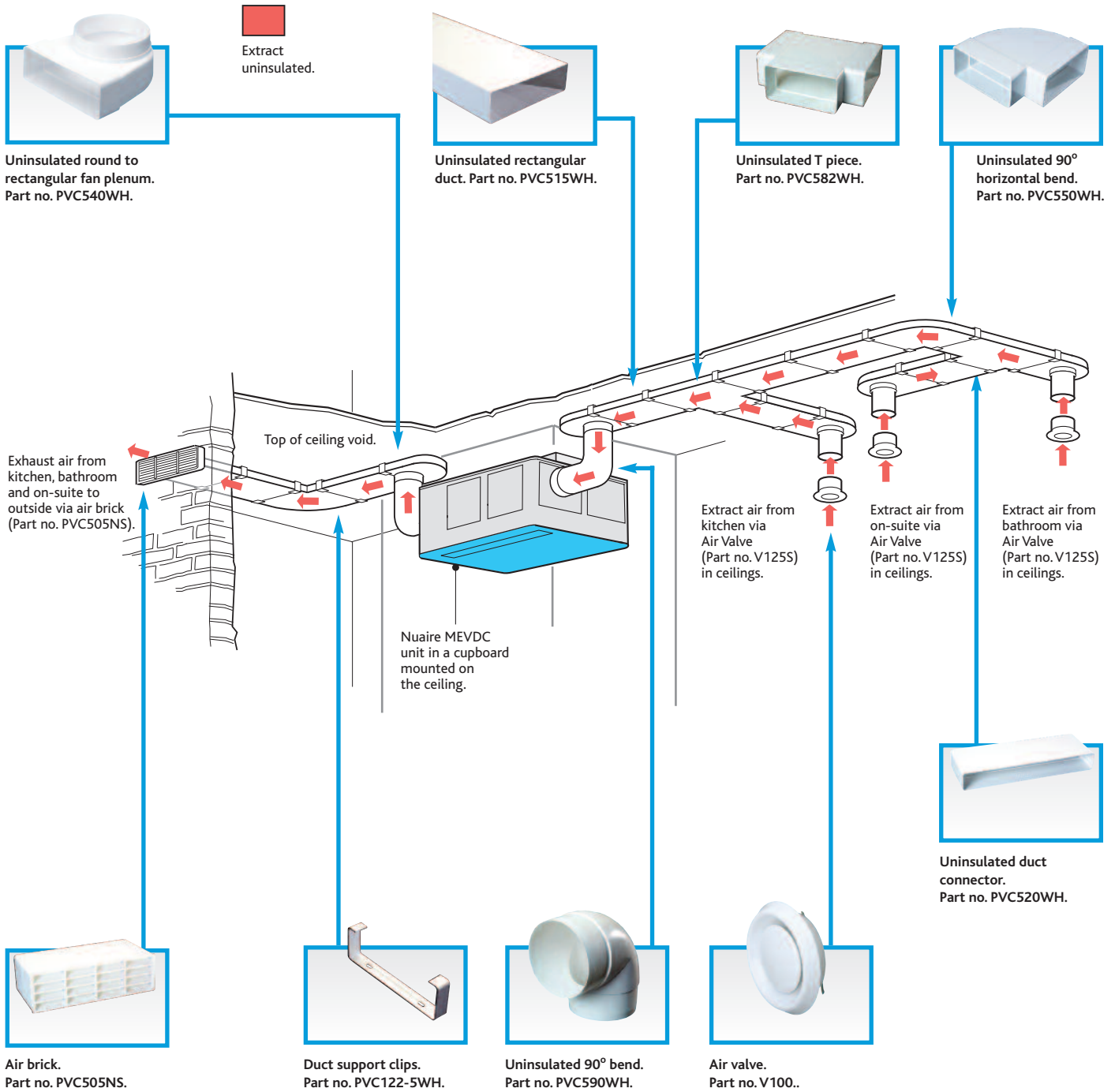
Hemispherical Free field dBA The maximum power consumption shown above (Watts) is consumed on units running continuously, not taking into account any heat recovery saving and based on SAP Appendix Q testing.

SAP Appendix Q Test Results

Application	Specific fan power (W/l/s)	Heat exchange efficiency %	Energy Saving Trust Best Practice Performance Compliant
Kitchen Plus 1 wet room	0.61	91	Yes
Kitchen Plus 2 wet rooms	0.59	91	Yes
Kitchen Plus 3 wet rooms	0.62	91	Yes
Kitchen Plus 4 wet room	0.71	91	Yes
Kitchen Plus 5 wet rooms	0.78	91	Yes
Kitchen Plus 6 wet rooms	0.92	90	Yes

MEVDC

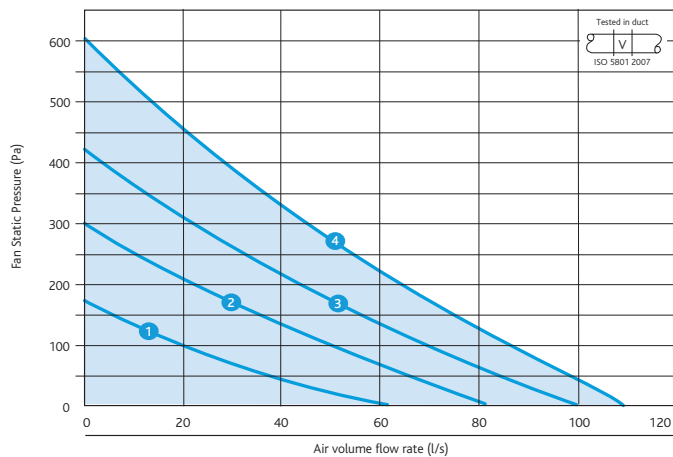
TYPICAL MEV DUCTED ARRANGEMENT FOR A CUPBOARD MOUNTED UNIT USING RECTANGULAR 204 x 60MM DUCTING



MEVDC

Performance - MEVDC

MEVDC Multi Point Extract



Note: Above are variable speeds, not set speeds.



MEVDC

ELECTRICAL & SOUND

Curve	Power		Open inlet sound power levels dB re 1pW								Breakout
	Consumption (Watts)	FLC Amps	63	125	250	500	1K	2K	4K	8K	Noise level dBA@3m
1	11	0.14	39	39	44	36	31	22	21	18	19
2	21	0.19	40	42	46	41	37	28	24	18	27
3	35	0.25	43	43	50	46	41	31	28	27	31
4	52	0.37	45	44	54	52	44	35	31	27	34

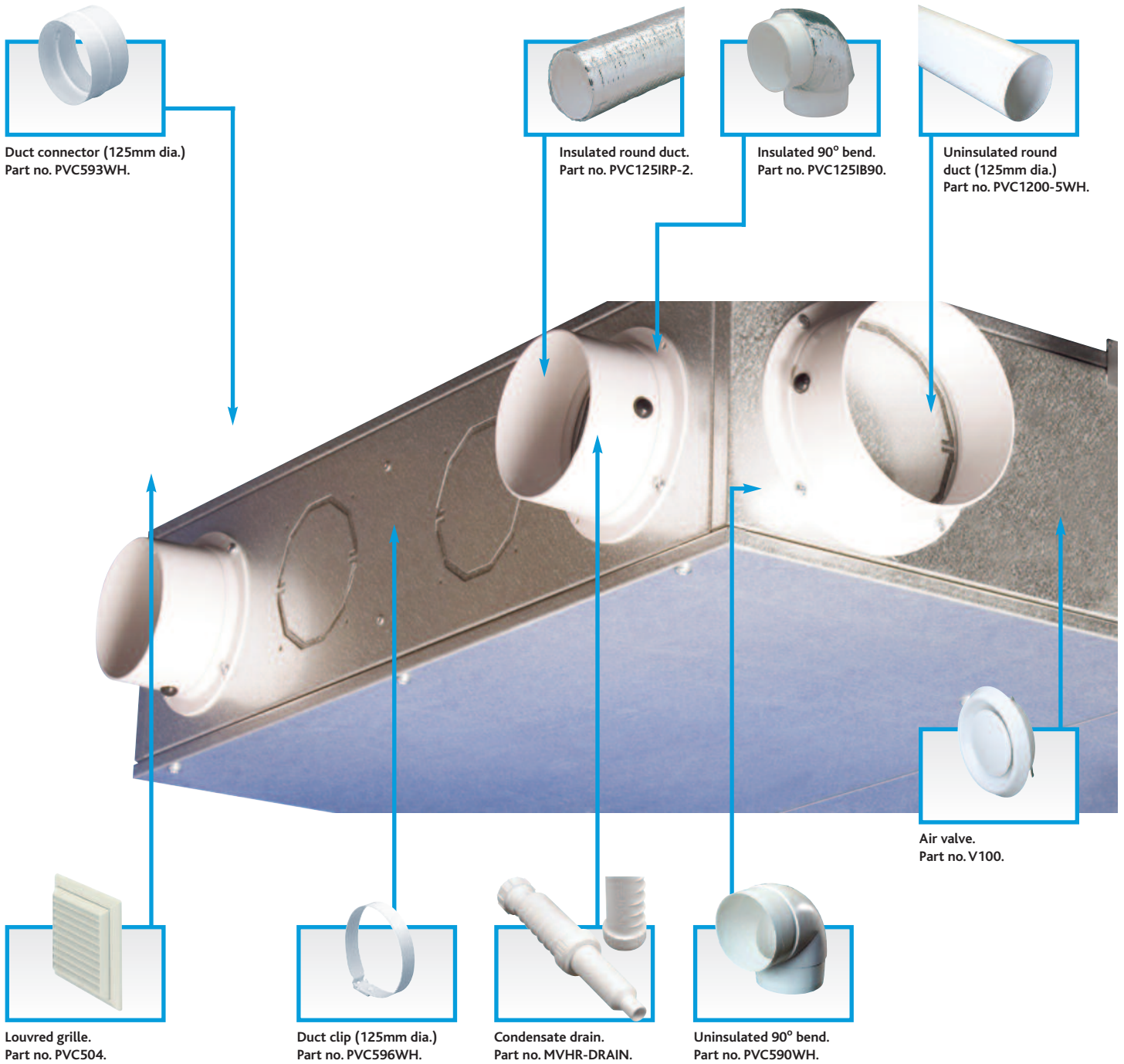
Hemispherical Free field dBA The maximum power consumption shown above (Watts) is consumed on units running continuously, not taking into account any heat recovery saving and based on SAP Appendix Q testing.

SAP Appendix Q Test Results

Application	Specific fan power (W/l/s)	Energy Saving Trust Best Practice Performance Compliant
Kitchen Plus 1 wet room	0.35	Yes
Kitchen Plus 2 wet rooms	0.30	Yes
Kitchen Plus 3 wet rooms	0.31	Yes
Kitchen Plus 4 wet rooms	0.33	Yes
Kitchen Plus 5 wet rooms	0.38	Yes

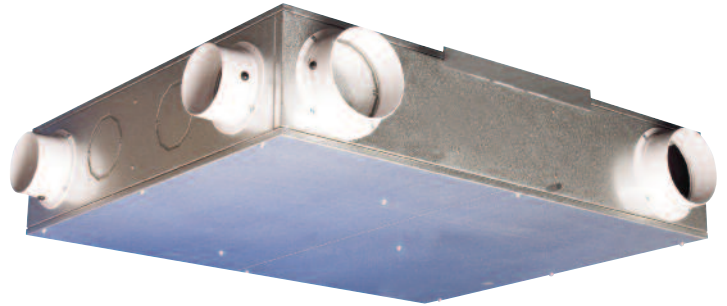
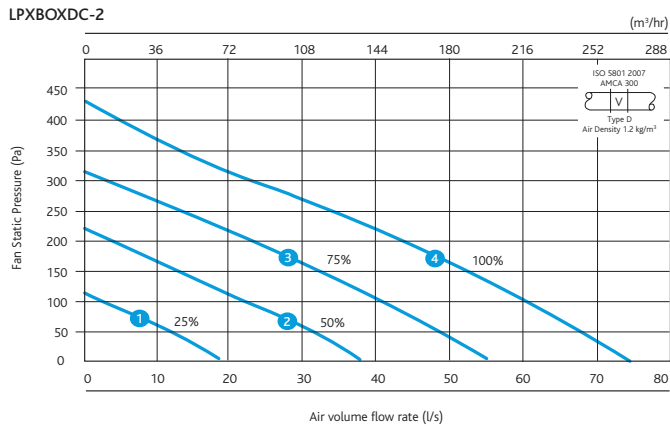
LPXBOXDC2

TYPICAL MVHR DUCTED ARRANGEMENT FOR A WALL MOUNTED UNIT USING 125MM DIA. DUCTING



LPXBOXDC2

Performance - LPXBOXDC-2



LPXBOXDC2

ELECTRICAL & SOUND

Curve	Maximum power consumption (Watts)		Sound Power Levels dB re 1pW								dBA @3m
			63	125	250	500	1K	2K	4K	8K	
1	73	Open inlet	38	42	48	43	42	32	29	29	28
		Open outlet	40	56	56	59	54	51	45	34	42
		Breakout	43	55	53	51	43	42	36	31	34
2	51	Open inlet	37	41	46	41	38	28	25	25	25
		Open outlet	39	55	54	57	50	47	41	30	39
		Breakout	42	54	51	49	39	38	32	27	32
3	31	Open inlet	34	40	43	35	37	28	22	19	23
		Open outlet	38	49	51	52	48	43	35	30	35
		Breakout	38	48	48	44	37	34	26	27	27
4	20	Open inlet	33	38	44	32	32	23	17	14	20
		Open outlet	37	48	49	49	43	38	30	25	32
		Breakout	37	46	46	41	32	29	21	22	24
5	12	Open inlet	30	34	38	23	19	10	4	-	13
		Open outlet	34	44	43	40	30	25	17	12	22
		Breakout	34	42	40	42	19	16	8	9	22
6	7	Open inlet	28	32	32	20	14	5	-	-	<10
		Open outlet	32	41	40	37	25	20	12	7	19
		Breakout	32	40	37	29	14	11	3	4	<10

Hemispherical Free field dBA The maximum power consumption shown above (Watts) is consumed on units running continuously, not taking into account any heat recovery saving and based on SAP Appendix Q testing.

SAP Appendix Q Test Results

Application	Specific fan power (W/l/s)	Heat exchange efficiency %	Energy Saving Trust Best Practice Performance Compliant
Kitchen Plus 1 wet room	0.80	66	No
Kitchen Plus 2 wet rooms	0.76	65	No
Kitchen Plus 3 wet rooms	0.79	64	No
Kitchen Plus 4 wet rooms	0.89	62	No
Kitchen Plus 5 wet rooms	1.04	61	No
Kitchen Plus 6 wet rooms	1.37	60	No
Kitchen Plus 7 wet rooms	1.69	59	No

ENERGY, THE ENVIRONMENT AND CORPORATE RESPONSIBILITY



- Nuaire pioneered and was the first to introduce low voltage energy saving control systems and fans with 'Ecosmart'.
- After starting with 'Green Dragon' Awards Nuaire achieved ISO14001 status; a series of international standards on environmental management.
- Nuaire gained the Carbon Trust Standard in 2009, the first ventilation company to do so.
- Impressive environmental credentials include reducing our carbon footprint by at least 2.5% year on year, halving the landfill from 140 tonnes to 70 tonnes last year and recycling of 19 tonnes of paper.

The recent achievement of gaining the Carbon Trust Standard is literally a mark of trust, an award for organisations that provide evidence of measuring, managing and reducing their carbon footprint against the strictest criteria. It's a clear acknowledgment that an organisation has taken real affirmative action to reduce the direct impact of climate change. Most importantly, accreditation from The Carbon Trust focuses on results, not just good intentions, and on long-term strategies for change, not just a snapshot of improvement at a given moment in time. It's a standard that's independent, credible and universally trusted, and attaining it is naturally something of which Nuaire is very proud.



ENVIRONMENT

The Nuaire group is committed to improving the impact of its activities on the environment, and aims to achieve this through defined environmental objectives and targets. We acknowledge that we have a duty and responsibility to reduce the environmental impact of our business activities on the local and wider community.

The company is committed to continuous improvements in environmental performance and the prevention of pollution.

Environmental regulations, laws and codes of practice are regarded as a baseline for our minimum standards of environmental performance.

Nuaire maximizes efficient use of natural resources through carbon trust audits, reducing waste to landfill, raising the environmental awareness of all employees through regular training and monitoring electricity, gas and water use. Day to day Nuaire strives to increase recycling of domestic waste and have

formulated a 'Green Team' with senior management representatives from different departments across the company. In addition, our product development and continuous improvement programmes include the specific environmental objectives of reducing energy consumption, carbon emissions, and promoting the use of renewable technologies.

SOCIAL RESPONSIBILITY

The core business of Nuaire is the provision of high quality ventilation products. However, we recognise that our business activities affect many different people – customers, suppliers, and the local community. As a result we manage our business with respect and integrity towards our clients, partners, suppliers and our people. We recognise that our customers are the foundation of our business. As such we aim to build lasting relationships by exceeding their expectations and delivering world



class products and services. Nuaire aims to form partnerships with its suppliers, and create professional, mutually beneficial alliances. We respect and value the diversity of our workforce and encourage their involvement in the business. We reward, train and develop our people to help them reach their full potential. We endeavour to employ local people and we are an equal opportunity employer. Nuaire are proud to support the local community through involvement in various charitable events and

other educational initiatives regularly contributing to the favoured charities of our customers and our people alike.



Breathe easy with a CPS qualification from Nuaire



As part of our commitment to our installers, engineers and customers, Nuaire now offers accredited ventilation installer training.

From 1st October 2010 domestic ventilation became 'notifiable work' as part of Approved Document Part F 2010 (ADF).

Installation engineers must be trained and registered to test and commission ventilation systems on new build homes. We can provide you with the necessary skills and knowledge through a 2 day course at our training facility in South Wales.

The course covers the various different types of ventilation systems you may encounter and is delivered both as theory and practical training. At the end of the course there is an open book, multiple choice assessment.

So if you want to learn new skills, increase your qualifications, and increase your scope of work please contact your local sales representative. Alternatively you can contact our training facility on **02920 858463** or mail cps@nuaire.co.uk for course availability and further information.

Why not benefit from Competent Persons Scheme (CPS) training at Nuaire's BPEC approved facility?





Head Office

Western Industrial Estate

Caerphilly

CF83 1NA

United Kingdom

T: +44 (0) 29 2085 8200

F: +44 (0) 29 2085 8300

E: info@nuaire.co.uk

W: www.nuaire.co.uk