

NOR250

Durable finger protection for doors:

- ✓ Lasts longer
- ✓ Saves maintenance budgets
- ✓ Fit for purpose
- ✓ Retrofit to existing doors



Superior Safety

Completely rigid shield fixed between frame and door face - prevents fingers accessing dangerous hinge gap when door is opened.

Durable

Anodised aluminium is fit-for-purpose in severe duty environments such as schools and hospitals.

Hygiene

Maintain highest hygiene standards and combat Healthcare Associated Infections (HCAI) with easy wipe clean surface.

Quick Installation

Simply fit to existing door and frame in minutes.

for more information contact
info@norsound.co.uk

BACKGROUND: 30,000 children trap and seriously injure their fingers in doors every year in the UK (RoSPA) and 1,500 of these will require surgery. Preventing these accidents not only eliminates the pain for the child, but protects local authorities and building owners against costly compensation claims.

Plastic hinge covers (pictured right) conceal the dangerous hinge area, but often have limited durability in heavy duty environments. Many local authorities report the need to replace these every 6 – 24 months with substantial impact on maintenance budgets.



Product Details

Extra Strength

Choose to reinforce for severe duty environments. Add extra NOR250 guiderail to absorb frequent impact (e.g. trolleys).



Easy Clean

Smooth surfaces. No dirt traps.

Anodised Quality

Durable aluminium, high-grade finish.



Range of Finishes

Silver anodised as standard; options available to order:

Corporate

Promote your business and CSR message.

Signposting

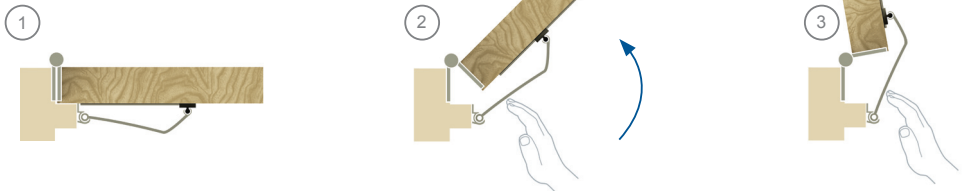
Signpost your building.

RAL/Anodise colour

Match your ironmongery, door or any colour you choose.

NOR250 in action

Completely rigid NOR250 shield fixed between frame and door face - prevents fingers accessing the dangerous hinge gap when the door is opened.



For further information and to order contact:

Norsound

Unit 5, Regents Drive, Prudhoe
Northumberland
NE42 6PX
United Kingdom

T. +44 (0) 1661 831 311
F. +44 (0) 1661 830 099
info@norsound.co.uk
www.norsound.co.uk

SPECIFICATION NOR250

Door type: Up to 54mm (max), single swing doors

Max opening angle: 100 deg (coming soon: 180 deg)

Standard supply length: 1800mm

Finishes: Anodised (standard), Other (enquire)

Codes: Two guiderail version (FAST_G2) - standard

Three guiderail version (FAST_G3) - extra strength