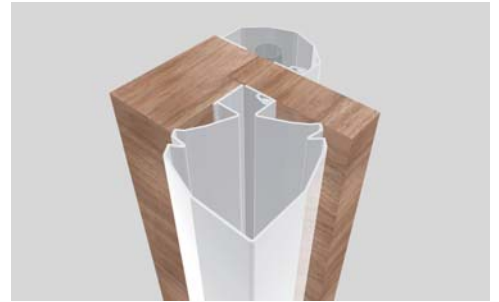


This set of NOR200 contains:

- 1 No. Wide strip for the inside of door
- 1 No. Narrow strip for hinge side of door
- 2 No. click strips
- 40no. 3.5mm x 13mm Screws For Fixing



Wide strip on the outside of the door

- 1) First close the door, then using the frame as a ruler draw down the door from top to bottom with a pencil. Using the line you have just drawn as a guideline; fix the click strip to the door starting approximately 5mm from the top of the door. (A screw should be used approximately every 20cm.)
- 2) Draw another line across the top of the click strip continuing onto the door frame. This is to give you a starting point to fix the wide section of the finger guard. Using the line you have just drawn on the frame as a starting point; fix the flat edge of the finger guard to the frame, keeping the product as straight as possible and in line with the edge of the door frame (as shown in Figure B). (Use the screws provided screw the product to the door approximately every 20cm).
- 3) Finally click the other end of the finger guard into the open end of the click strip. One down one to go!

Narrow strip on the inside of the door

Fitting the inside section is similar to the outside however you use the barrel of the hinge as the guideline.

- 1) Measure out 10mm from the centre line of the hinge barrel on both sides of the hinge, continue the markers up the full length of the door. This is the edge along which the click strip and finger guard needs to fitted.
- 2) Starting 5mm from the top of the door fix the flat section on the narrow strip onto the door using the line you have just drawn as a guideline. As before fix the product at 20cm intervals using the screws provided.
- 3) Draw a line across the top of the finger guard and as before continuing onto the frame. Use the line as a starting point, and fix the click strip at 20cm intervals down the full length of the frame along the line you have drawn.
- 4) Finally push the edge of the guard into the click strip.(See Figure D)

Your Done

Square edge door with strip on hinge side: Maximum opening 170° degrees

The NOR200 should, in principle, not be fitted to the exterior of outside doors as exposure to the elements and sub-zero temperatures can cause rapid deterioration making the plastic brittle.

If a door opens further than stated in these instructions, the supplier cannot be held responsible for any damage which may arise. The angle of opening can effectively be limited by the use of door-closers or door-stops.

Important If the strips are not fitted exactly in line with the edge of the frame, door or pencil line, the supplier cannot be held responsible for any possible damage to the strip!

Figure A

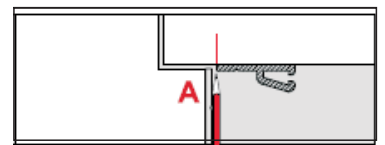


Figure B

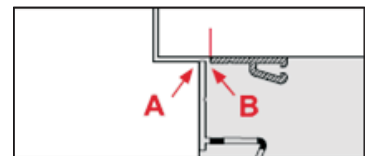


Figure C

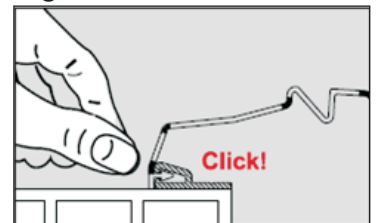
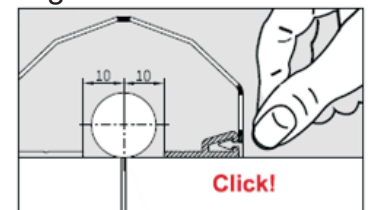


Figure D



Tools Required

