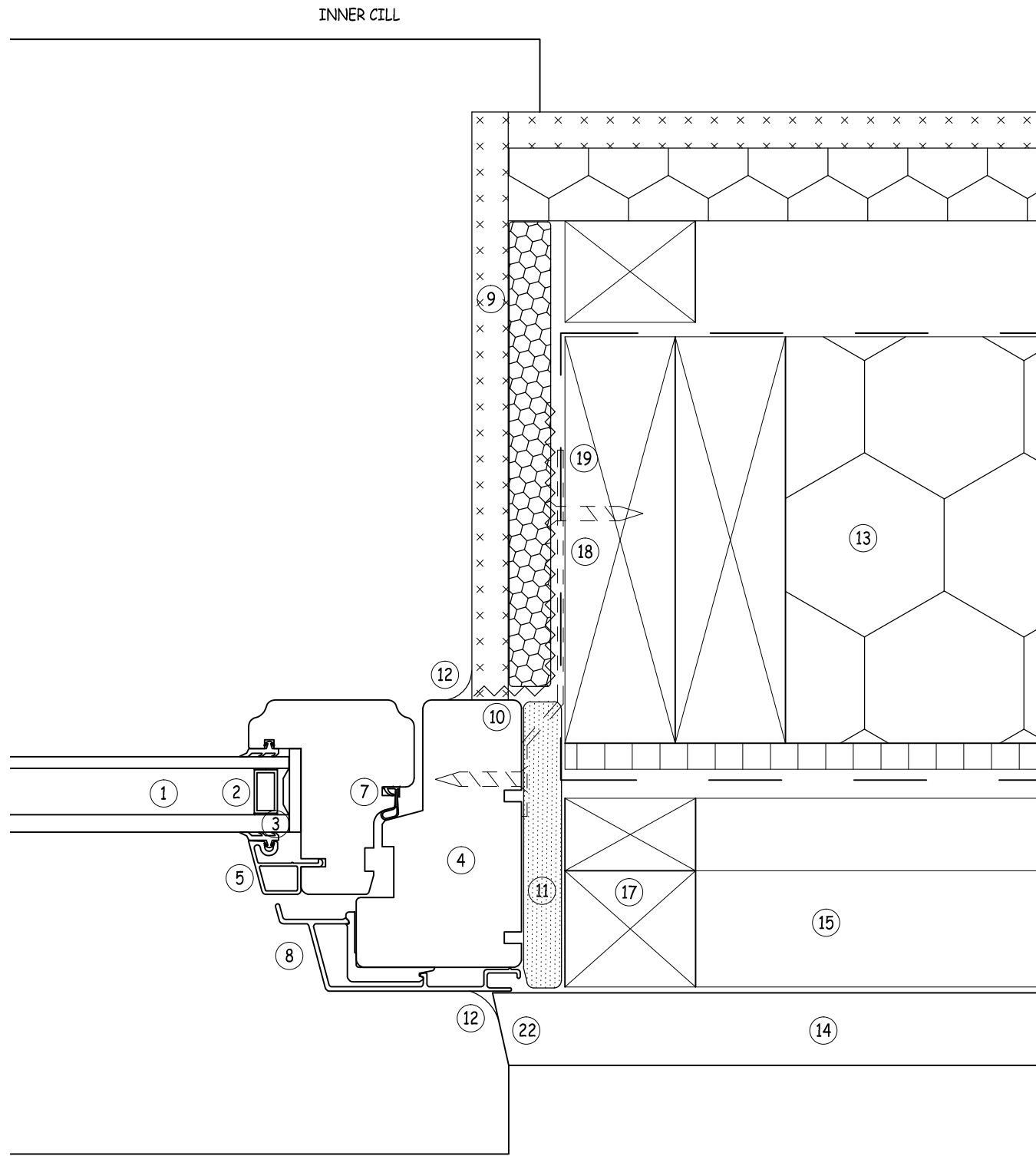


KEY:

- ① NORDAN HIGH PERFORMANCE NTECH 1.2 INWARD OPENING 3 HANDLED TILT & TURN WINDOW ALUMINIUM CLAD
- ② SEALED GLAZING UNIT
- ③ GLAZING SYSTEM - THE SYSTEM IS SELF VENTILATING AND SELF DRAINING, THEREFORE NO MOISTURE IS IN CONTACT WITH THE WOOD. TO IMPROVE SECURITY, THE SEALED UNIT IS GLUED INTO THE SASH
- ④ VACUUM IMPREGNATED TIMBER - NORDAN PRODUCTS USE TIMBER SOURCED FROM SUSTAINABLE FORESTS, WITH PEFC FULL CHAIN OF CUSTODY. VACUUM IMPREGNATION PROTECTS THE TIMBER FROM ROT, FUNGAL AND INSECT ATTACK.
- ⑤ ALUMINIUM GLAZING BEADS - ALUMINIUM GLAZING BEADS REDUCE THE LEVEL OF MAINTENANCE AND CREATE A MORE SUBSTANTIAL DESIGN BY ALLOWING FULL VENTILATION AND DRAINAGE. THE ALUMINIUM IS SECURELY CLIPPED INTO PLACE THUS PREVENTING AND DAMAGE TO THE WINDOW
- ⑦ GASKET - THE PROFILE OF THE WINDOW SECTIONS AND DESIGN FOR DRAINAGE DEPENDS ON THE WEATHER SEAL BEING ABLE TO PROVIDE THE REQUIRED RESISTANCE OF THE GAP BETWEEN SASH AND FRAME TO WEATHER
- ⑧ OPTIONAL ALUMINIUM CLADDING - THE OPTIONAL ALUMINIUM RAIN SCREEN CLADDING GREATLY IMPROVES THE LIFE-SPAN OF THE PRODUCT AND VASTLY REDUCES MAINTENANCE COSTS. IT CAN ALSO BE POWDER COATED TO ANY RAL COLOUR OF YOUR CHOICE
- ⑨ INSULATED WINDOW REVEAL
- ⑩ AIR TIGHTNESS TAPE AND SEALANT APPLIED TO BACK OF FRAME & RETURNED ONTO TIMBER KIT
- ⑪ COMPRESSIBLE FILL & SHIMS AS REQUIRED
- ⑫ SEALANT AT WINDOW FRAME
- ⑬ TIMBER FRAME KIT IN ACCORDANCE WITH ACCREDITED CONSTRUCTION DETAILS (SCOTLAND) 2010
- ⑭ EXTERNAL TREATED TIMBER LININGS FITTED HORIZONTALLY
- ⑮ 38 x 50mm VERTICAL WW TREATED TIMBER STRAPS AT 600mm CRS FIXED TO 25 x 50mm WW TREATED TIMBER HORIZONTAL STRAPS FIXED TO TIMBER KIT & POSITIONED AT 600mm CENTRES. LATTICE OF STRAPPING ALLOWS FOR MINIMUM 50mm AIR SPACE TO REAR OF LININGS
- ⑰ TIMBER BATTENS AROUND WINDOW OPENING ACTING AS CAVITY FIRESTOP
- ⑱ STAINLESS STEEL FIXING STRAP, BENT ACROSS & FIXED TO TIMBER KIT - ALL WITH SUITABLE FIXINGS PER STRUCTURAL ENGINEER'S RECOMMENDATIONS
- ⑲ OUTER BREATHABLE PAPER LAPPED WITH INNER VAPOUR BARRIER AT JAMB INGOE. SS FIXING STRAPS (18) FITTED & THEN AIR TIGHTNESS TAPE (10) FITTED
- ⑳ CHAMFERED CUT AWAY FROM BUILDING WITH TREATED FINISH APPLIED ON SITE



DESIGN ADVICE

DRAWING TO BE READ IN CONJUNCTION WITH NORDAN MEASURING & INSTALLATION LEAFLET. AVAILABLE AT www.nordan.co.uk/uk/downloads

ALL DETAILS ARE SUBJECT TO CHANGE BY PROJECT INSURER / CERTIFIERS LATEST REQUIREMENTS i.e NHBC

ALL DETAILS ARE SUBJECT TO CHANGE BY TIMBER FRAME KIT MANUFACTURERS REQUIREMENTS

ALL DETAILS MUST BE READ IN CONJUNCTION WITH THE LATEST ACCREDITED CONSTRUCTION DETAILS (SCOTLAND) & ALTERED ACCORDINGLY TO ENSURE AIR TIGHTNESS & THERMAL CONTINUITY

AIR TIGHTNESS GENERAL NOTES

- INSTALL WINDOW TO OVERLAP WITH OUTER LEAF OF WALL FINISH
- INSTALL AIR TIGHTNESS SEAL BETWEEN THE INSIDE FACE OF THE WINDOW AND THE STRUCTURAL FINISH OF THE WINDOW OPENING

THERMAL CONTINUITY GENERAL NOTES

- CHECK THAT THERE IS NO DEBRIS IN THE CAVITY
- INSTALL CAVITY BARRIER AROUND OPENING

| | |
|---------|--------------------|
| TITLE: | WINDOW JAMB DETAIL |
| DATE: | MAY 2011 |
| SCALE: | 1:2 @ A3 |
| DWG NO: | NDUK ID 004 |



© NorDan AS



www.nordan.co.uk

Jamb Detail

Scale 1:2

Timber Frame Kit with outer Timber Linings