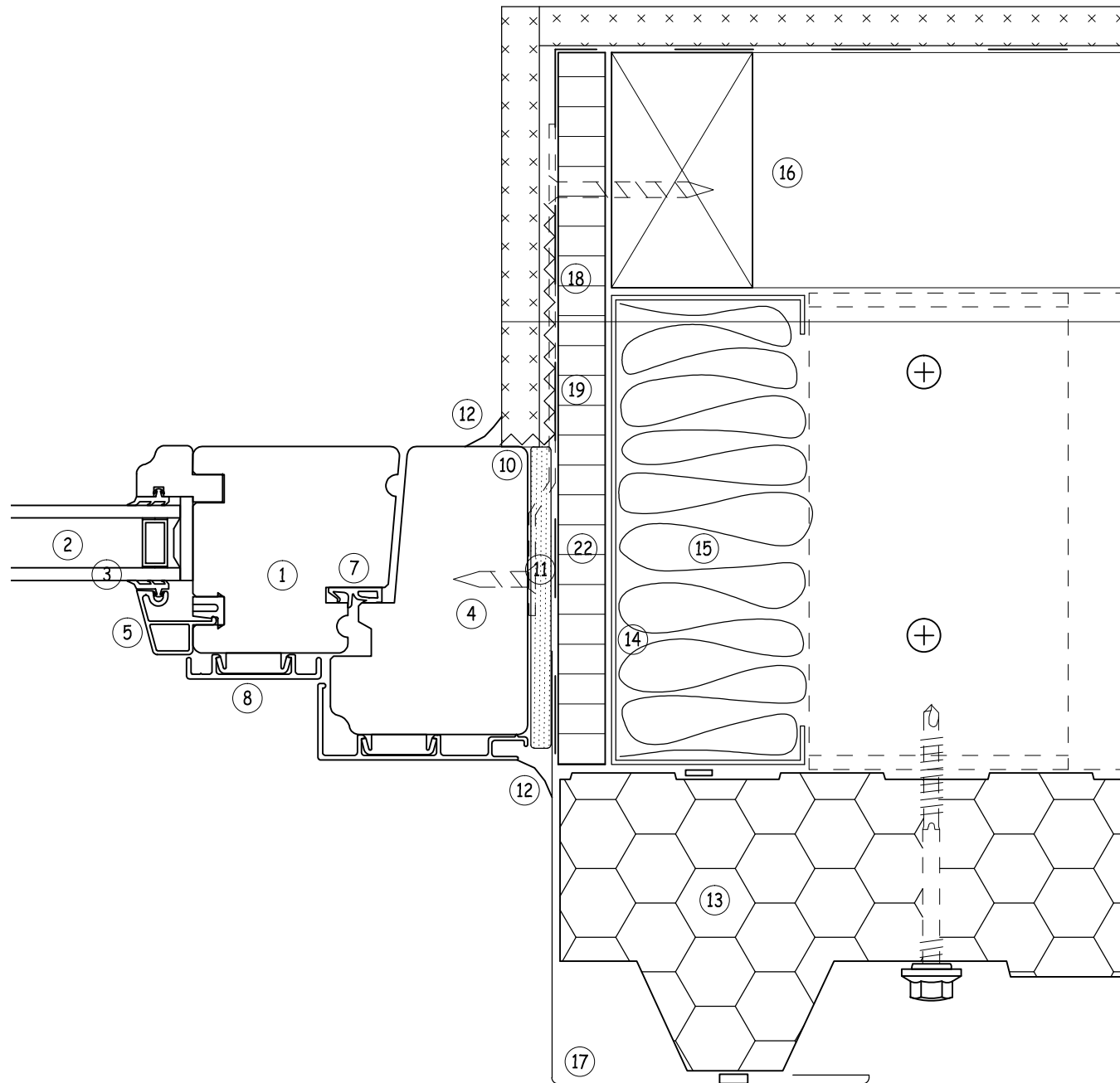


KEY:

- ① NORDAN HIGH PERFORMANCE INWARD OPENING DOOR ALUMINIUM CLAD
- ② SEALED GLAZING UNIT
- ③ GLAZING SYSTEM - THE SYSTEM IS SELF VENTILATING AND SELF DRAINING, THEREFORE NO MOISTURE IS IN CONTACT WITH THE WOOD. TO IMPROVE SECURITY, THE SEALED UNIT IS GLUED INTO THE SASH
- ④ VACUUM IMPREGNATED TIMBER - NORDAN PRODUCTS USE TIMBER SOURCED FROM SUSTAINABLE FORESTS, WITH PEFC FULL CHAIN OF CUSTODY. VACUUM IMPREGNATION PROTECTS THE TIMBER FROM ROT, FUNGAL AND INSECT ATTACK.
- ⑤ ALUMINIUM GLAZING BEADS - ALUMINIUM GLAZING BEADS REDUCE THE LEVEL OF MAINTENANCE AND CREATE A MORE SUBSTANTIAL DESIGN BY ALLOWING FULL VENTILATION AND DRAINAGE. THE ALUMINIUM IS SECURELY CLIPPED INTO PLACE THUS PREVENTING AND DAMAGE TO THE FRAME
- ⑦ GASKET - THE PROFILE OF THE DOOR SECTIONS AND DESIGN FOR DRAINAGE DEPENDS ON THE WEATHER SEAL BEING ABLE TO PROVIDE THE REQUIRED RESISTANCE OF THE GAP BETWEEN SASH AND FRAME TO WEATHER
- ⑧ OPTIONAL ALUMINIUM CLADDING - THE OPTIONAL ALUMINIUM RAIN SCREEN CLADDING GREATLY IMPROVES THE LIFE-SPAN OF THE PRODUCT AND VASTLY REDUCES MAINTENANCE COSTS. IT CAN ALSO BE POWDER COATED TO ANY RAL COLOUR OF YOUR CHOICE
- ⑨ INSULATED DOOR REVEAL
- ⑩ AIR TIGHTNESS TAPE AND SEALANT APPLIED TO BACK OF FRAME & RETURNED ONTO NOMINAL 15mm PLYWOOD INGOE
- ⑪ COMPRESSIBLE FILL & SHIMS AS REQUIRED
- ⑫ SEALANT AT DOOR FRAME
- ⑬ PROPRIETARY INSULATED COMPOSITE PANEL BY SPECIALIST FIXED TO STEEL PURLINS ALL AS PER SPECIALIST SPECIFICATIONS
- ⑭ STEEL PURLIN \ CHANNEL TO FORM VERTICAL JAMB STRUCTURAL MEMBER ALL AS PER STRUCTURAL ENGINEER'S DETAILS
- ⑮ FULLY INSULATED BETWEEN PURLIN AT DOOR JAMB (DOOR INGOE)
- ⑯ INNER FINISHES - TIMBER WALL FRAMING, VAPOUR BARRIER & 12.5mm PLASTERBOARD
- ⑰ PROPRIETARY FLASHING TO DOOR JAMB TO COVER CUT END OF WALL PANEL - ALL AS PER COMPOSITE PANEL CLADDING MANUFACTURER'S DETAILS. NOTE FLASHING TAKEN INTO DOOR INGOE & JUNCTION AT WINDOW JAMB FULLY SEALED. NOTE NO FIXINGS TO INTERNAL
- ⑱ STAINLESS STEEL FIXING STRAP, BENT ACROSS & FIXED TO EITHER TIMBER POSTING OR INTO CHANNEL - ALL WITH SUITABLE FIXINGS
- ⑲ INNER VAPOUR BARRIER RETURNED INTO JAMB INGOE
- ⑳ EXTERIOR PLYWOOD TO INGOE



DESIGN ADVICE

DRAWING TO BE READ IN CONJUNCTION WITH NORDAN MEASURING & INSTALLATION LEAFLET. AVAILABLE AT www.nordan.co.uk/uk/downloads



ALL DETAILS ARE SUBJECT TO CHANGE BY PROJECT INSURER / CERTIFIERS LATEST REQUIREMENTS i.e NHBC

ALL DETAILS ARE SUBJECT TO CHANGE BY TIMBER FRAME KIT MANUFACTURERS REQUIREMENTS

ALL DETAILS MUST BE READ IN CONJUNCTION WITH THE LATEST ACCREDITED CONSTRUCTION DETAILS (SCOTLAND) & ALTERED ACCORDINGLY TO ENSURE AIR TIGHTNESS & THERMAL CONTINUITY

- AIR TIGHTNESS GENERAL NOTES
- INSTALL DOOR TO OVERLAP WITH OUTER LEAF OF WALL FINISH
 - INSTALL AIR TIGHTNESS SEAL BETWEEN THE INSIDE FACE OF THE DOOR AND THE STRUCTURAL FINISH OF THE DOOR OPENING
- THERMAL CONTINUITY GENERAL NOTES
- CHECK THAT THERE IS NO DEBRIS IN THE CAVITY
 - INSTALL CAVITY BARRIER AROUND OPENING

TITLE:	INWARD DOOR JAMB DETAIL
DATE:	MAY 2011
SCALE:	1:2 @ A3
DWG NO:	NDUK ID 028


 © 2010 NorDan AS

www.nordan.co.uk

Door Jamb Detail Scale 1:2 Profiled Metal Insulated Composite Panel