



**Safety –
wherever you walk**

nora[®] floor coverings made of rubber

nora[®]

All About Flooring. **All About You.**



noraplan® ultra grip

Increased safety, increased comfort, increased environmental compatibility

norament® and **noraplan®** rubber floor coverings have been setting standards in interior design for more than 50 years. The floor coverings are able to permanently and resiliently resist enormous loads and prove themselves worldwide in numerous hospitals, schools, kindergartens, airports, office and administrative buildings, shops, fitness areas, industrial enterprises, buses, railways, and ships.

noraplan® ultra grip is the first PVC-free safety floor covering which meets the requirements of the UK Slip Resistance Group on a floor covering with "low slip potential" both in dry and wet conditions. The floor covering thus represents a synthesis of enormous slip resistance, environmental compatibility, groundbreaking product properties and aesthetic design.

Its discrete, non-directional and dirt-concealing scatter design with aluminium glitter granules represents noble modernity and provides options for architectural accents. In addition, the range of 16 colours offers numerous opportunities to implement individual design concepts.

- **High slip resistance**

The homogeneous rubber floor covering **noraplan® ultra grip** has been specifically designed to counteract slip accidents which in 90 % of cases occur on wet and relatively smooth surfaces. It was tested according to the high requirements of the British TRRL Pendulum test and has excellent anti-slip properties – R11 according to DIN 51 130 and BGR 181 or GUV-R 181. It thus offers an extremely high level of slip resistance both in dry and wet conditions.

- **Practice-orientated functionality**

Like all **nora®** floor coverings, **noraplan® ultra grip** is extraordinarily wear-resistant, has a long life, is dimensionally stable, resistant to cigarette burns, largely resistant to chemicals, antistatic, and has excellent fire-protection properties. The high walking comfort, the excellent footfall sound absorption and the environmental compatibility represent an additional sustainable stable value.

- **Future-orientated environmental compatibility**

As a **nora®** rubber floor covering, **noraplan® ultra grip** does not contain any PVC, plasticizers (phthalates) or halogens (e.g. chlorine). Its basis are industrial and natural rubbers of the highest quality. These are supplemented by minerals from natural deposits as well as environmentally compatible colour pigments. The excellent environmental compatibility is confirmed by the best possible rating "A" in the BRE Rating. The product is of low emission according to RAL-UZ 120 and therewith corresponds to the requirements of the "Der Blaue Engel" (the Blue Angel).



Rubber safety floor covering with increased slip resistance

noraplan® ultra grip

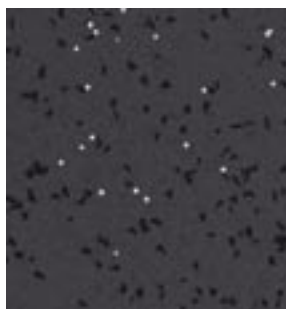
TRRL and 4S Pendulum Test 36+ in the wet and RZ value 20.1, slip resistance R11 according to DIN 51 130 and BGR 181 or GUV-R 181, excellent environmental compatibility confirmed by BRE "A" rating.

 ± ~2.0 mm  16

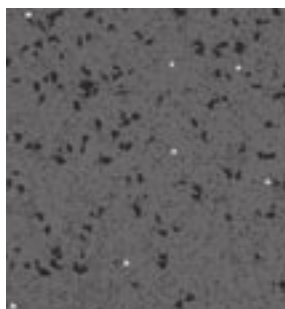
Art. 1531

 ~ 1.20 m x 15.0 m

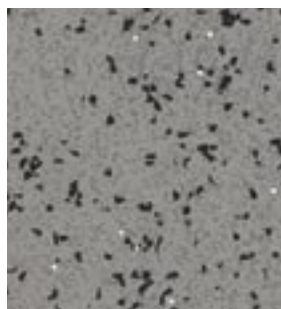
nora® profile connection dimension: A + U



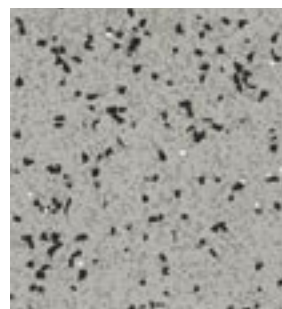
6014



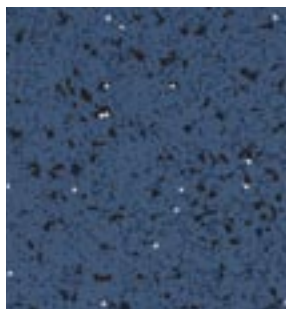
6015



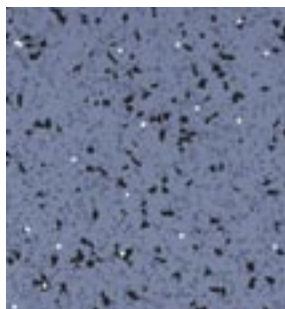
6016



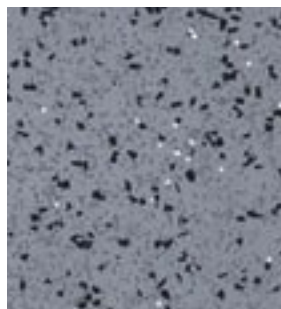
6017



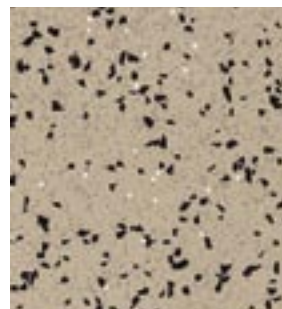
6018



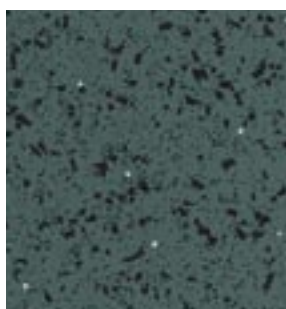
6019



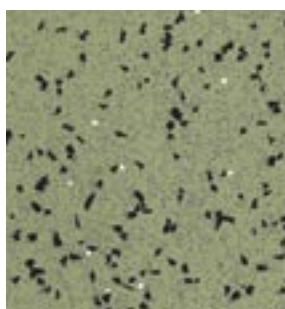
6020



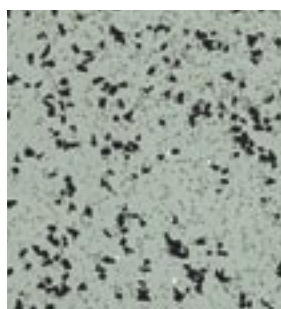
6021



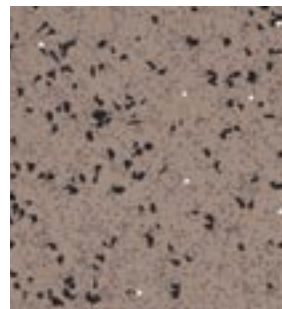
6022



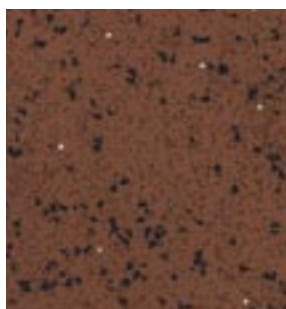
6023



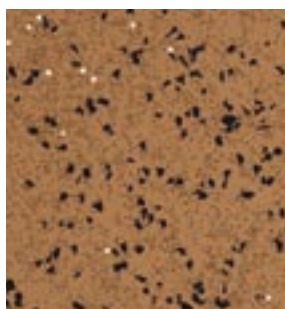
6024



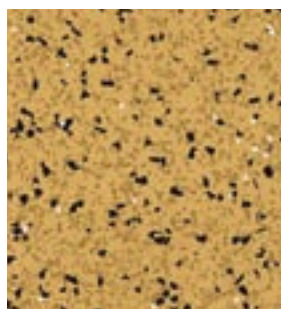
6025



6026



6027



6028



6029

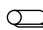
Further nora® rubber floor coverings

with slip resistance classification R10 according to DIN 51 130 and BGR 181 or GUV-R 181

noraplan® stone

 ≈ 2.0 mm 20

Art. 149

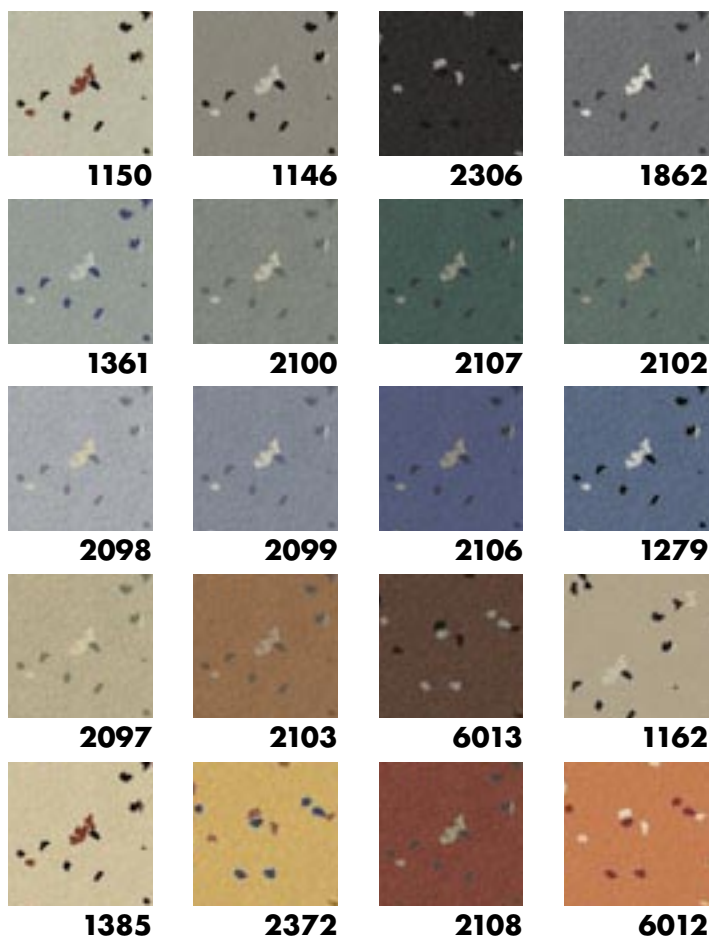
 ~ 1.22 m x 15.0 m

Art. 249

$\square \sim 610$ mm x 610 mm

15 $\square = 5.58$ m² in one carton

nora® profile connection dimension: A + U



norament® 926 strada

 ≈ 3.5 mm 16

Art. 926 strada/1870

$\square \sim 1004$ mm x 1004 mm

nora® profile connection dimension: E + U



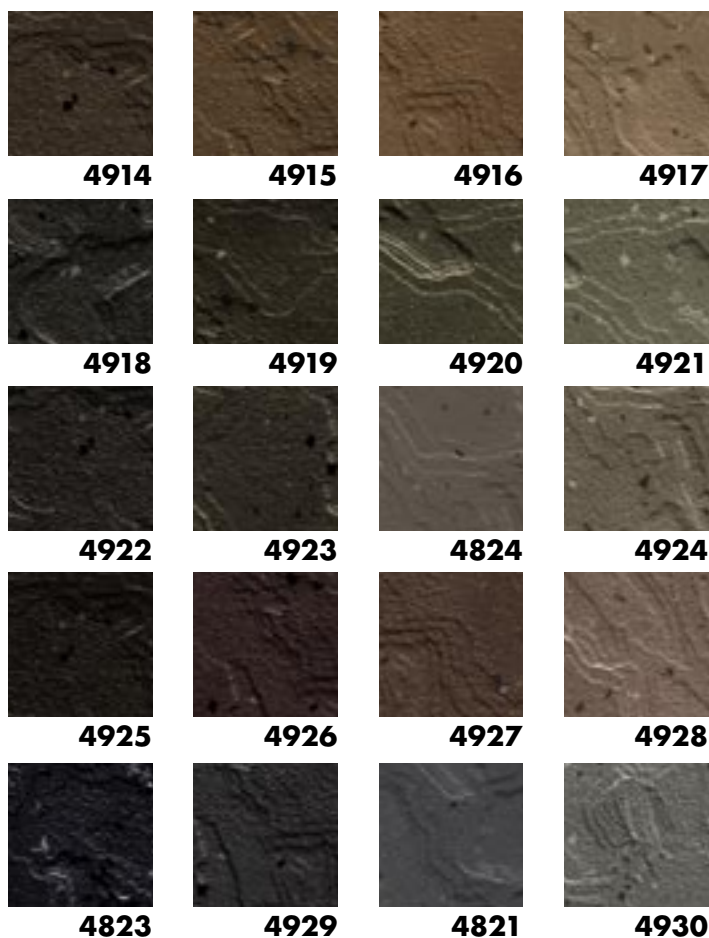
norament® 926 serra



Art. 926 serra/3016

□ ~ 1004 mm x 502 mm

nora® profile connection dimension: E + U



Anti-slip properties at a glance:

Test method	noraplan® ultra grip	noraplan® stone	norament® 926 strada	norament® 926 serra
TRRL - Pendulum	Dry: 36+ Wet: 36+			
Satra TM 144	Dry: > 0,60 Wet: > 0,45		Dry: > 0,70 Wet: > 0,50	
DIN 51 130	R11	R10	R10	R10
DIN 51 097 Barefoot areas with wet load	A, B, C	A, B, C	A, B	
EN 13893	DS	DS	DS	DS



nora® is a decision which comes with many advantages

Safety through anti-slip properties is for example an important issue in schools and kindergartens. These include many areas with high traffic. Students and children play, run, and jump about. **nora®** rubber floor coverings do not only offer anti-slip properties but also a high footfall sound absorption, a pleasant walking feel, and numerous options for an attractive room design. **nora®** floor coverings are extraordinarily wear-resistant and are characterised by an extremely long life even under heavy load conditions.

nora systems GmbH

Representative Office Shanghai
Room 9C,
1566 Long Life building
Yan An Road West
PRC-200052 Shanghai
Tel.: + 86 - 21 - 3226 0077
Fax: + 86 - 21 - 5258 1958
Internet: www.nora.com/cn

nora flooring systems UK Ltd.

4-5 Allerton Road,
GB-Rugby, CV23 0PA
Direct Dial Numbers:
01788 - 513 160 - 513 169
Telefax: 01788 - 55 28 12
E-Mail: info-uk@nora.com
Internet: www.nora.com/uk

nora systems GmbH

Höhnerweg 2-4
69469 Weinheim
Germany
Phone: +49 - 6201 - 80 66 33
E-Mail: info@nora.com
Internet: www.nora.com