

# These floor coverings are top of the class.

Rubber floor coverings for facilities in the education sector.



**nora**<sup>®</sup>





# Interior design begins with the floor covering.

Education is an extremely valuable asset and safeguards the future of a society. Everybody who is indirectly or immediately involved in educating young people bears a great responsibility. This is particularly true where designing educational buildings is concerned. They are the formative learning environment and daily surroundings for children, youngsters and young adults over many years and have a significant impact on their well-being and education accomplishments.

The choice of floor covering is a decisive factor when fitting out educational facilities. Floor coverings take up a large proportion of a room's area and are a crucial aspect in ensuring a positive atmosphere, good indoor air quality, comfort and economic efficiency.

nora® rubber floor coverings are ideally suited for use in educational buildings such as nursery schools, schools and universities. The fact that they satisfy the most stringent quality requirements, combined with unremitting consideration of ecological aspects, offers planning security and a high degree of economic efficiency, and also supports the development of sustainable buildings in the education sector.

## Contents

**6 – 11** Compatibility

---

**12 – 17** Design and comfort

---

**18 – 21** Economic efficiency

---

**22 – 27** System solutions

---

**28 – 29** The company

---

**30 – 31** Contact

---





These floor coverings  
create a great atmosphere.

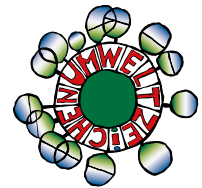
The special characteristics of nora® floor coverings include their outstanding compatibility, the vast scope for design, a high degree of user comfort, and the contribution they make to the economic efficiency of a building during its entire life cycle. They create an atmosphere for students and teachers that is ideal for learning.





## Compatibility is a major issue.

Those responsible for planning and constructing educational buildings are faced with widely differing challenges. However, all projects have one thing in common: the practically airtight construction methods that are used today to save energy. These minimise air exchange in buildings and make the use of low emission materials absolutely indispensable. Clean air is vitally important. Both students as well as teachers often spend all day in education facilities. Children's bodies in particular are still developing and react sensitively to pollutants, which is why they need special protection and care. Their health and well-being form the basis for their future learning success.



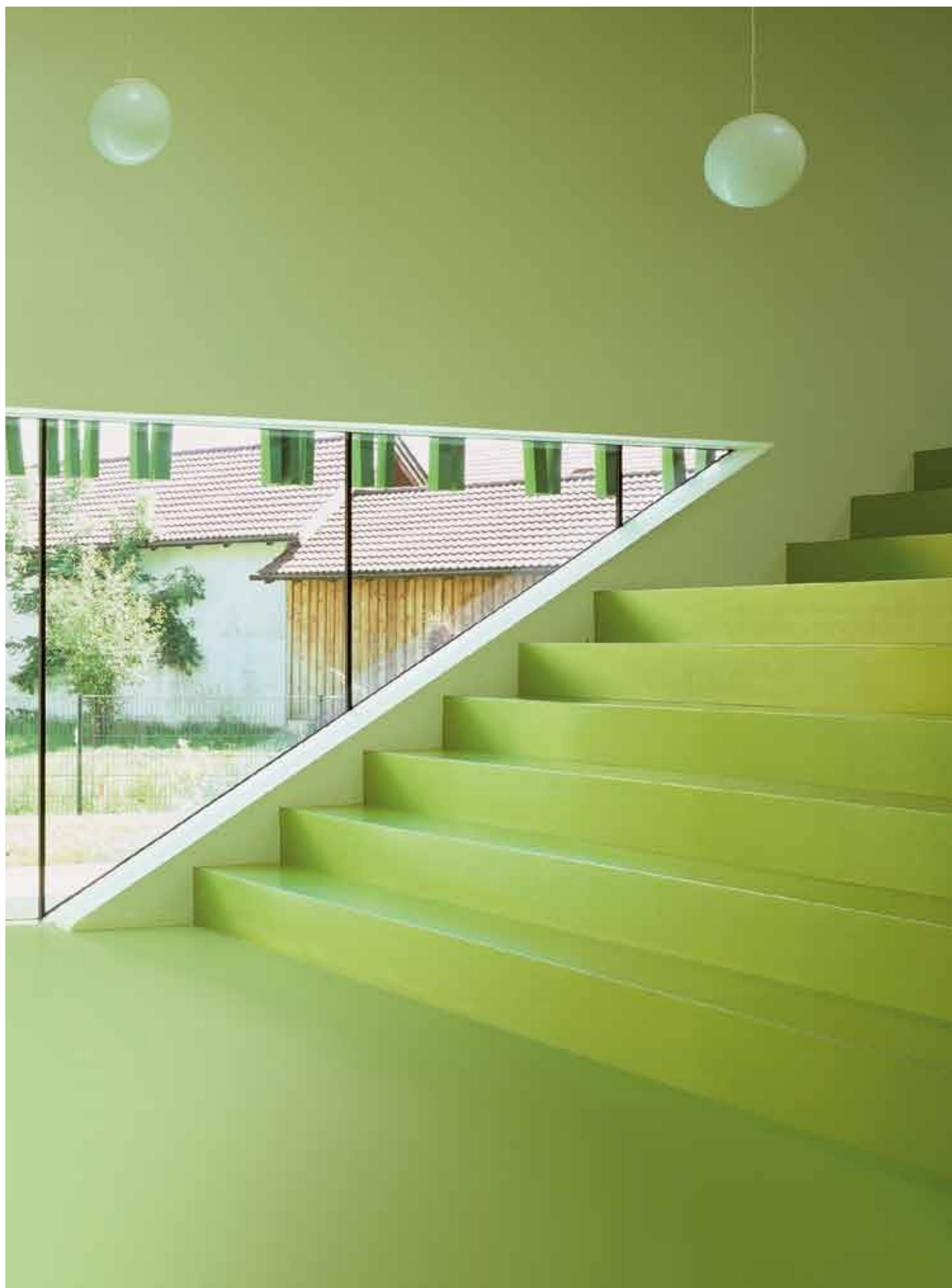
\* Information sur le niveau d'émission de substances volatiles dans l'air intérieur, présentant un risque de toxicité par inhalation, sur une échelle de classe allant de A+ (très faibles émissions) à C. (fortes émissions)

**Certificated** | Bearer of the world's leading seals of quality.

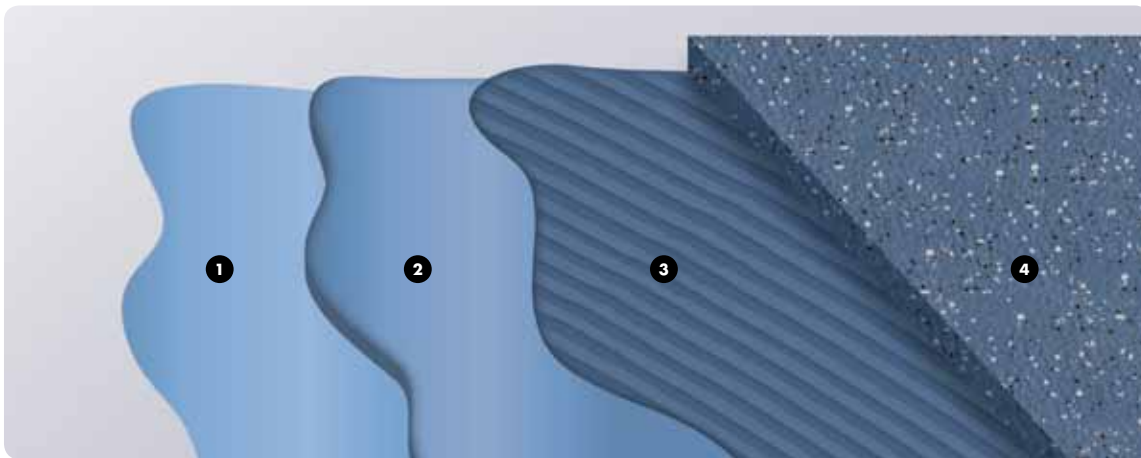
## Exceptional compatibility.

Rubber is an extremely effective and perfectly tolerable raw material that contains no plasticizers (phthalates), halogens (like chlorine) or PVC. nora® floor coverings made of rubber are certified as having low emission levels and they contribute to ensuring that the indoor air remains healthy and uncontaminated. This is substantiated by the awards of the world's leading quality certificates such as the Blue Angel, the world's first environment preservation-related product label. The Greenguard Environmental Institute has also certified the excellent indoor air compatibility of nora® floor coverings. Not only that, but they

require absolutely no coating at all since the rubber surface is by its very nature extremely resistant. This obviates the need for regular and environmentally harmful renewals of a coating using aggressive chemicals as is common with other resilient floor coverings. The environmental and health safety of nora® floor coverings is guaranteed by coordinated and certified all-in-one systems. Products from nora systems can also make a positive contribution to the certification of buildings in line with LEED, DGNB, BREEAM and other systems.



**nora system blue®** | Integral consideration of the floor construction: nora system blue® combines low emission nora® floor coverings and low emission installation materials.



**The system design:** 1 primer 2 filler 3 adhesive 4 floor covering



## Because a floor only becomes a good floor with 360° quality management.

The demands made on modern buildings are getting tougher all the time. Environmental and health aspects are becoming more and more significant. The focus in constructing new buildings is shifting increasingly to the usage of health and environmentally compatible materials. The extremely hermetic, energy-saving construction methods used today make it extremely difficult for pollutants (like those contained in building products) to escape from enclosed spaces. That is why low emission building materials should be used for new building or renovations to sustainably avoid health risks.

For this reason, nora systems has developed nora system blue®, the world's first certified 360° quality management system for floors. The underlying idea is that not only is the floor covering a decisive factor with regard to healthy indoor air, but the installation materials such as the primer, filler and adhesive are as well. Work quality also plays a major role in creating a healthy and environmentally sound environment.

By taking the floor covering, installation materials and processing into consideration as an overall system, nora system blue® makes a decisive contribution to the well-being and health of the younger generations. nora system blue® combines low emission nora® rubber floor coverings with low emission installation materials. All the system components have been individually awarded "Blue Angel" certification and are perfectly harmonised with one another. Not only that, but the system as a whole has also been tested for low emission levels and has been certified by the Rhineland safety standards authority to exclude any hazardous interaction between the individual components.

Specialised installers offer additional peace of mind. This not only guarantees the highest levels of usage and processing reliability, but also fulfils the requirements for sustainable building. nora system blue® is designed to enable building developers to meet their obligations towards the public domain to protect the health of building users.

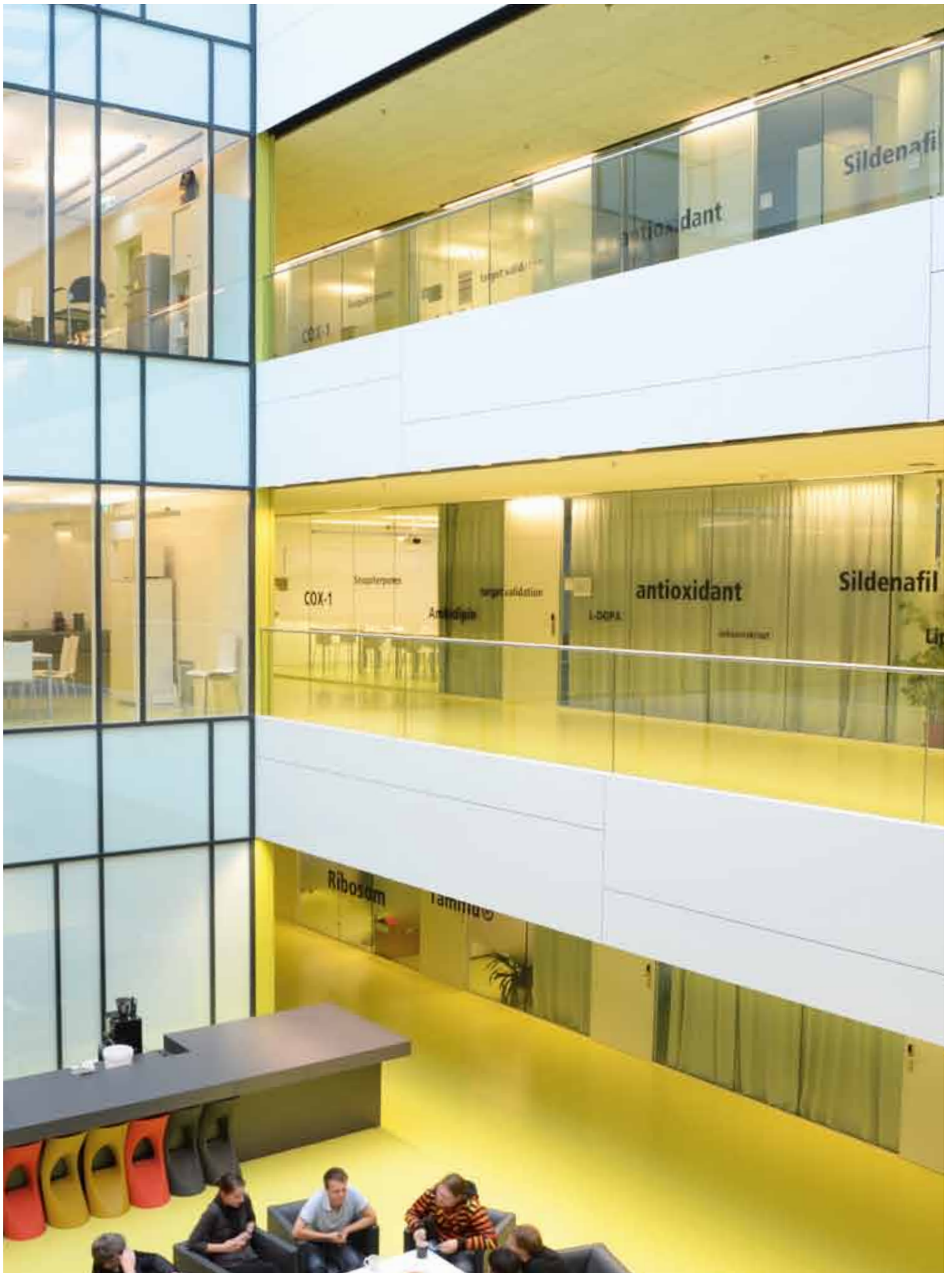






## The learning environment governs successful learning.

How well young people learn is decisively dependent upon their learning environment. That is why all the parties involved in designing educational buildings should be aware of their special responsibility and make every effort at the planning stage to create a positive and supportive learning environment. Their task is to design learning worlds in which both students and teachers feel comfortable, enjoy performing well and stay healthy. The overall atmosphere of rooms with their colours, shapes, functions and materials should animate students to learn. The greater the sense of well-being users have, the greater the learning success.





**Colour and space concepts** | Perfectly fitting images, patterns, logos, game areas or navigation systems are cut precisely using ultrasound cutting technology and incorporated into the floor covering as inlays with no joints at all. nora systems also speaks NCS, the international language for colour communication. This is especially user-friendly because colours are named just as people see them. It enables architects and designers to easily match the floor coverings within overall colour and space concepts and to coordinate them with other creative elements.

nora® is vibrant design.

Whether nursery schools, schools or universities – with more than 300 variations of colour, design and surfaces in the standard range, nora® floor coverings offer a broad spectrum for impressive, imaginative and individual interior design. Different plays of colour, surfaces and structures allow scope for creativity and the conception of an atmosphere of well-being as well as a stimulating learning environment.

Not only that, but individual special designs fulfil practically every wish of both planners and users. Inlays can be used to integrate almost any patterns and images into a floor covering without any joints at all. Playful creative elements can be added as corporate design components,

for example a customer's own logo and colour scheme or orientation systems with navigation routes. These aspects give every building its very own special and unique character.

The various surface designs of nora® rubber floor coverings provide for diversification in interior design. Alongside the characteristic plain round pastille, other designs such as the hammerblow, relief or carving structure surface can also be chosen. A range of accessories matching the floor coverings can be used to create a uniform appearance down to the very last detail.



**Comfort** | nora® floor coverings offer the highest degree of comfort, be it in a kindergarten, school or university.

## True comfort cannot be seen. It is experienced.

Their permanent resilience means that nora® floor coverings usually create very little noise, resulting in a quieter, pleasant room atmosphere that makes learning that much easier. Even when chairs are being moved, pens are dropped or children are jumping around, this causes significantly less noise than is the case with hard floor materials. Not only that, but the outstanding footfall noise insulation means that the rooms on the storey below are more peaceful as well because less noise is transmitted. noraplan® acoustic floor coverings in particular offer even better footfall noise insulation and greater walking comfort due to their enhanced resilience. They are especially suitable for rooms where children do gymnastics and romp around.

From an ergonomic point of view, the resilience of floor coverings is especially important to teachers because the body is subjected to far less physical strain when standing and walking around for long periods of time. They do not tire so quickly and remain productive for much longer.

nora® floor coverings offer the highest degree of comfort, be it in a kindergarten, school or university. They are warm to walk on, even for small children in bare feet, and pleasant to the touch. The coverings are extremely slip-resistant when romping and playing around. They create learning worlds and comfort zones in which people can move around safely, enjoy spending their time and be motivated in their learning.

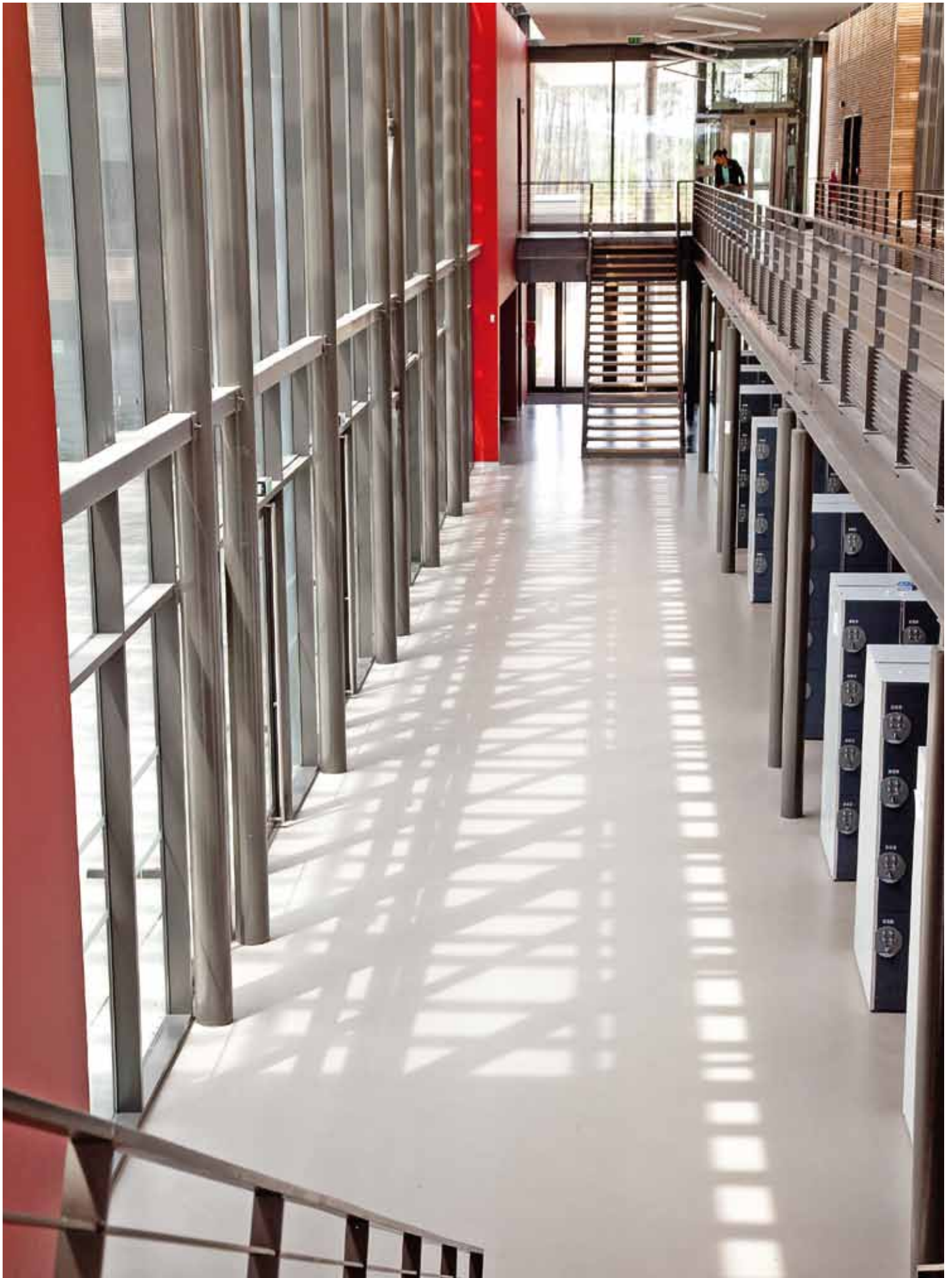






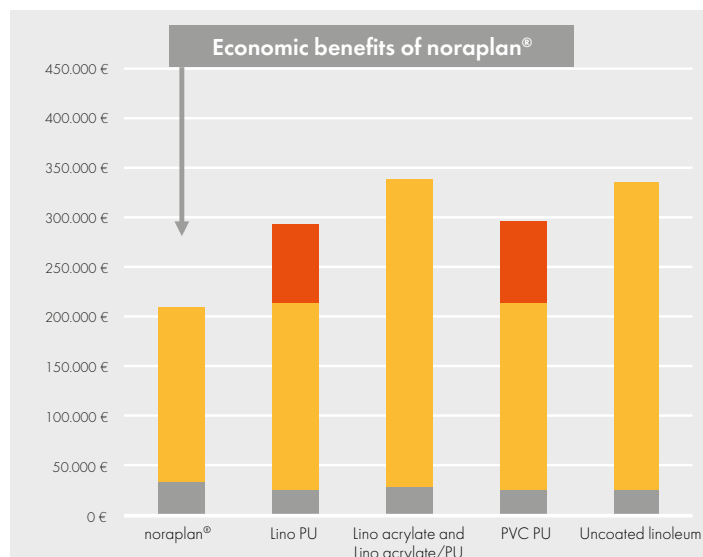
Time proves that nora<sup>®</sup>  
floor coverings are the  
most economical solution.

nora<sup>®</sup> rubber floor coverings offer the greatest reliability from the planning of a building through to its deconstruction. Their economic efficiency with regard to maintenance and care is outstanding. They are made completely of rubber, which is an extremely effective raw material that brings its advantages to the fore throughout the entire life of a product. For instance, nora<sup>®</sup> floor coverings by their very nature do not require a coating, obviating the need for cost-intensive refurbishment. Their dense closed rubber surface is extremely robust and resistant and especially easy to clean. nora<sup>®</sup> floor coverings retain their superb appearance and economic benefits during their whole life cycle.

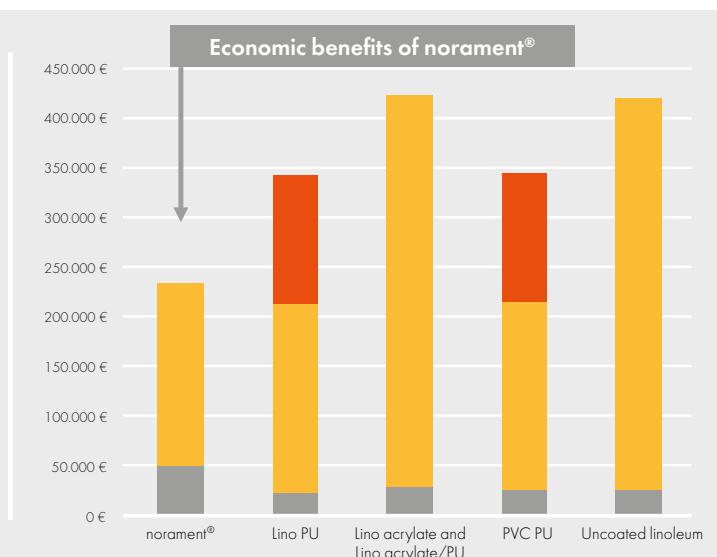


**LCC comparison:** | Assumed cleaning scenario for an area of 1,000 m<sup>2</sup> over 15 years.

### LCC comparison: noraplan®



### LCC comparison: norament®



Investment    Operating and maintenance costs    Surface refurbishment costs

noraplan®: typical scenario for areas with moderate strain, for example in nursery schools.

norament®: typical scenario for areas with high levels of dirt contamination and mechanical strain, for example in school foyers.

Details an source: nora systems GmbH.

## Quality pays off.

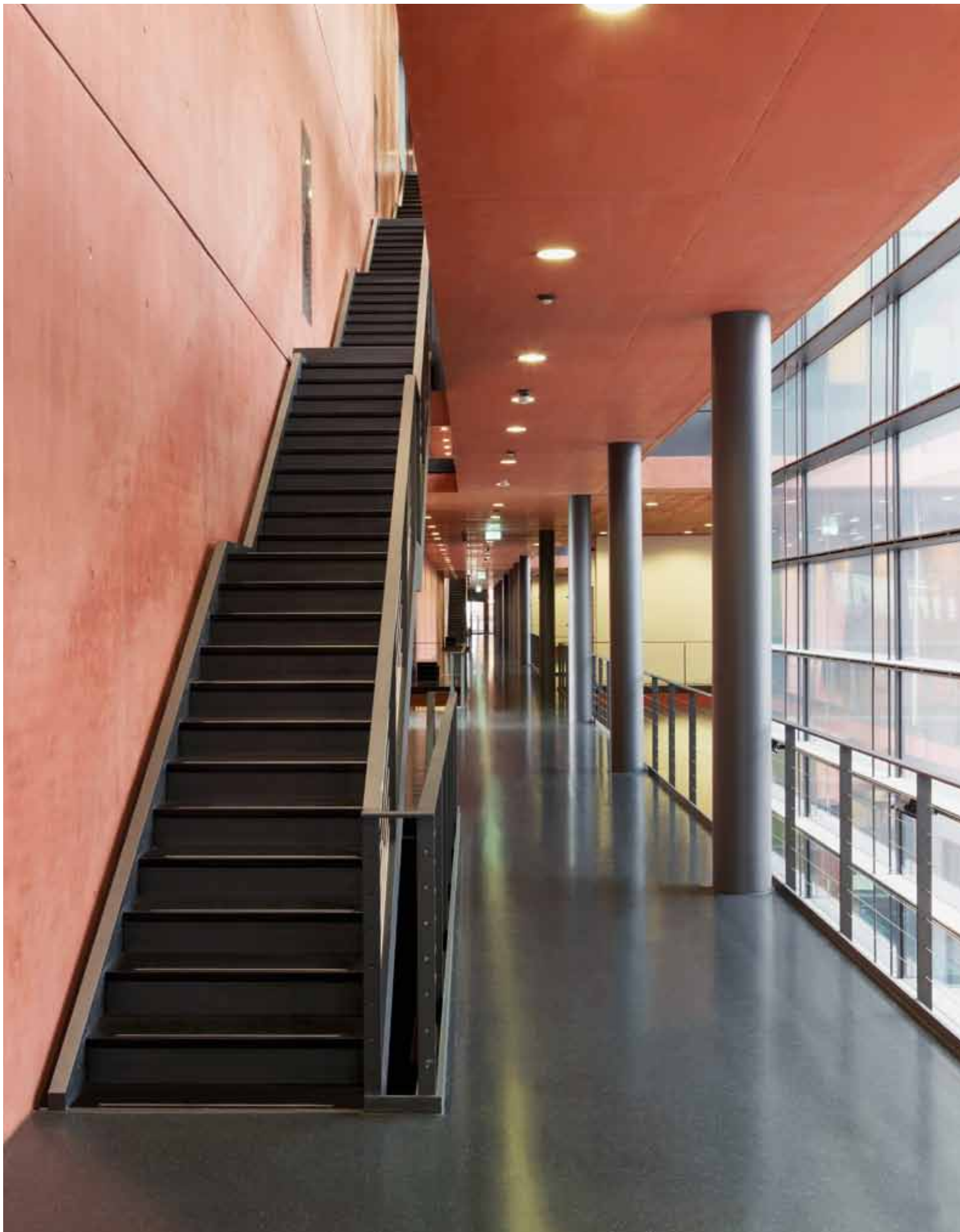
During the course of their life cycle, nora® floor coverings offer a crucial advantage over other coverings: they do not require a coating – neither to begin with nor at any other time in their product life. This results in immense savings in maintenance costs since there is also no need for regular and expensive recoating, as is the case with other resilient floor coverings. Their dense closed surface makes nora® rubber floor coverings exceptionally resistant and robust.

Their ability to put up with almost anything is demonstrated most evidently at institutes of education. Countless chairs, pieces of furniture and feet exert great strain on a floor covering every day. Coverings with a hammerblow surface are particularly immune to such treatment.

nora® floor coverings retain their high-quality appearance and remain cheap to maintain throughout their entire product life. An assessment of

the life cycle costs is accordingly much more favourable in comparison with other resilient floor coverings. This so-called LCC analysis adds together all the costs that are incurred during a product's lifetime – the lowest expenditure is to be found with nora® floor coverings. A lot of money can be saved with forward planning, particularly in the maintenance of educational buildings, because only between 20 and 30 percent of a building's life cycle costs are attributable to its construction. The remaining 70 to 80 percent are maintenance-related.

The fact that the floor coverings are cleaned using just water and nora® pads also offers huge advantages, as it makes chemical cleaning agents almost entirely superfluous.





## | The design is the sum of all the details.

All-in-one system solutions round off the nora® product range. Special floor coverings that are designed with additional functional properties fulfil special requirements in all kinds of different areas of application. The range of accessories that complements the floor coverings includes colour coordinated skirtings, angles and profiles, as well as hot welding rods and joint sealing compounds. Together with norament® rubber stairtreads, they provide for a harmonious design in every detail. Cleaning the floor coverings using nora® pads together with just water ensures sustained hygiene and a permanent, top-quality appearance.



Be sure of perfect results – with nora® special floor coverings.

The individual and specialised requirements of classrooms are just as diverse as the subject matter that is taught in them. nora® special floor coverings are perfectly designed to cope with such conditions and offer people and equipment the greatest possible protection. Computer and science classrooms, just like laboratory areas, require especially effective floor coverings, for example with conductive and dissipative

properties. Escape routes and staircases have to comply with special fire safety standards. It goes without saying that the nora® product assortment also includes floor coverings that are practically immune to oil, grease and chemicals, as well as removable coverings and acoustic coverings that reduce footfall noise by around 20 dB.



## Safety for everyone doing what they're supposed to be doing. Or perhaps not.

The paramount priority and absolute focus with educational buildings is the safety of its users of all ages. Be it rooms where children play and romp around, the barefoot areas of changing rooms, technical classrooms or teaching kitchens - what they all need are safe and slip-resistant floor coverings. Fire safety is also a major issue.

nora® floor coverings are flame-retardant and - if the worst comes to the worst - toxicologically safe in the event of a fire and no harmful gases are given off. These characteristics diminish the risk of poisoning by fire gases and make it easier to escape in emergency situations.



## Every detail counts. And that includes the accessories.

A pleasant room atmosphere is the product of the sum of its details. The accessories were developed as a part of a perfectly coordinated system for this very reason. For utmost functionality and harmonious designs. Matching skirtings attractively complement a floor covering. Cushioned-edge profiles create a perfect transition between the floor coverings and the walls, particularly from a hygiene point of view and for better cleaning. Colour-matching hot welding rods and joint sealing

compounds are also available for rooms where special circumstances require joints. There are tailor-made solutions for staircases including pre-shaped stairtreads with stair nosings, risers and treads all in one piece or as single elements. These all allow the stairs to be harmoniously integrated into the architecture.



The secret behind an enduringly attractive appearance: water and nora® pads.

A coordinated cleaning system has been developed for nora® floor coverings which enables them to be carefully cleaned even without cleansing agents. Used with a standard cleaning machine, nora® pads leave behind a spotless and hygienic floor covering using just water. At the core of the system are three different pads. Pad 1 is used for the initial cleaning and then maintenance cleaning, Pad 2 is for cleaning after completion of building work and intensive cleaning, while

Pad 3 removes the most stubborn dirt and scratches. As a rule, the floor coverings just have to be cleaned using clear water, and cleansing agents are only necessary in exceptional cases. The outstanding appearance of nora® floor coverings can thus be sustainably preserved in an ecologically sound manner with little effort and at a pleasantly reasonable cost.

## The responsibility of being global market leader: nora systems GmbH.

We lead the market where rubber floor coverings and floor covering systems are concerned. Architects, building developers, processing companies and users the world over trust in us when it comes down to designing aesthetically high-quality interiors for healthy living. All nora® floor coverings are manufactured at our company's main plant in Weinheim and offer unique premium quality "Made in Germany". Our products are sold worldwide through our 16 proprietary organisations and in over 80 countries.

We persistently pursue our vision of creating products with a unique and sustainable usability factor for the benefit of our customers. For this reason we invest our innovative strength in the product development. Additionally, we stand by our customers during the planning and realisation phases and help them to sustainably preserve the value of their floor coverings.

We regard innovation as being a constant learning process. Our teachers are our customers, the markets and ecological developments. We face up to our responsibility to think and act holistically and in a future-oriented manner. Perhaps that is one of the reasons why we have been enjoying the confidence of our customers for more than 70 years.





Solutions are the products  
of dialogue. Talk to us.



## Your contact partners at nora systems.

The specifications for an educational building are diverse and are derived from how it is to be used. But regardless of whether it is a nursery, school, university or any other institute of education - nora systems offers a suitable floor covering for every area of application. Place your order today for detailed information, product samples or

the assortment brochure. You can also get in touch straight away with your personal contact partner in the Sales division. Just give us a call at the number given below. Or write to us using the online contact form on our website.

### Sales contact Germany

Tel.: +49 (0) 6201 - 80 66 33

[info@nora.com](mailto:info@nora.com)  
[www.nora.com](http://www.nora.com)

### Sales contact Great Britain

Tel.: +44 (0) 1788 513 160 - 513 169  
Fax: +44 (0) 1788 55 28 12

[info-uk@nora.com](mailto:info-uk@nora.com)  
[www.nora.com/uk](http://www.nora.com/uk)

### Sales contact China

Tel.: +86 (0) 21 - 3226 0077  
Fax: +86 (0) 21 - 5258 1958

[info-cn@nora.com](mailto:info-cn@nora.com)  
[www.nora.com/cn](http://www.nora.com/cn)

### Sales contact UAE

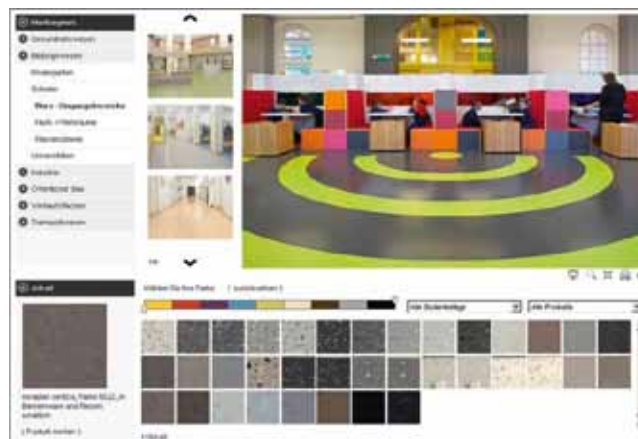
Tel.: +971 (4) 450 8175  
Fax: +971 (4) 450 8374

[info@nora.com](mailto:info@nora.com)  
[www.nora.com/corp](http://www.nora.com/corp)

## Interactive design form with nora® Interior Design Studio.

Simply test the spatial impact of your floor covering online. With just a few clicks, you can choose the colours, product line and surface area of your building and "install" the floor covering virtually and easily.

New building views and a zoom function for all images give you extra scope for individual designs. The nora® Interior Design Studio offers even more convenience with the CAD online service, enabling you to import your selected floor coverings directly into your CAD application or 3D modelling software. Convince yourself of the merits of the Interior Design Studio at [www.nora.com](http://www.nora.com)



## Information on the road: the nora® app.

Our free nora® app ideally complements our brochures and sample cards and is the perfect tool for creative interior designs. The app for iPhones and iPads is really easy to use and provides you, wherever you are and whenever you need them, with comprehensive product information and references clearly grouped into areas of application, colours, market segments and products.

You can also search specifically for special characteristics of nora® rubber floor coverings such as electrostatic conductivity or slip-resistance. Test the wide variety of possibilities. The nora® app is available from the App Store free of charge and in eleven different languages.



**nora® App** | Test the wide variety of possibilities.  
The nora® app is available from the App Store free of charge.

**nora systems Shanghai Co. Ltd.**

10 A/B, Long Life Building | 1566 Yan'an Road West | 200052 Shanghai, PR China

Tel.: +86 21 - 3226 0077 | Fax: +86 21 - 5258 1958

E-Mail: [info-cn@nora.com](mailto:info-cn@nora.com)

[www.nora.com/cn](http://www.nora.com/cn)

**nora systems GmbH (JLT Branch)**

2008 HDS Business Centre | Jumeirah Lakes Towers | PO Box 478392 | Dubai, UAE

Tel.: +971 (4) 450 8175 | Fax: +971 (4) 450 8374

E-Mail: [info@nora.com](mailto:info@nora.com)

[www.nora.com/corp](http://www.nora.com/corp)

**nora flooring systems UK Ltd.**

4-5 Allerton Road | Rugby CV23 0PA, Great Britain

Direct Dial Numbers: (01788) 513 160 - 513 169

Fax: (01788) 55 28 12

E-Mail: [info-uk@nora.com](mailto:info-uk@nora.com)

[www.nora.com/uk](http://www.nora.com/uk)

**nora systems GmbH**

Höhnerweg 2-4 | 69469 Weinheim, Germany

Phone: +49 (0) 6201 - 80 66 33

E-Mail: [info@nora.com](mailto:info@nora.com)

[www.nora.com](http://www.nora.com)