

A low-angle, slightly blurred photograph of a person in teal scrubs walking in a hospital hallway. The person is moving from right to left. In the foreground, the lower legs and feet of another person wearing teal scrubs and white shoe covers are visible. To the left, there is a piece of medical equipment with a black wheel and a silver metal frame. The floor is a light-colored, speckled rubber floor covering. The overall atmosphere is clinical and professional.

**Your specialist  
for health care**

nora<sup>®</sup> rubber floor coverings  
for sophisticated design solutions

**nora<sup>®</sup>**

# Contents

## Best properties for projects in health care

Sustainability, environmental compatibility and quality .....	4
Design solutions with a system .....	8
Colour and design range / NCS coding .....	10
Colour design in health care .....	12
Service .....	14
Safety .....	16
Cleaning .....	18
Hygiene.....	20

## Walk through the hospital

Entrance areas .....	24
Corridors and escape routes .....	26
Stairwells and escape stairwells .....	28
Patient rooms and base rooms .....	30
Children's ward, delivery rooms and maternity wards .....	32
Examination rooms and outpatient departments .....	34
Operating theatres .....	36
Intensive care units .....	38
Physiotherapy rooms and sports areas .....	40
Visitor and day rooms, cafeterias .....	42
Laboratories .....	44
Technical areas .....	46
Administrative areas .....	48

## **nora systems** – your partner for **design solutions** with a system

nora systems has been manufacturing floor coverings, stairtreads and accessories made of rubber for more than 70 years. With a market share of 80% in Germany and 50% worldwide, we are the market leader in rubber floor coverings. One of our key applications is health care with its multifaceted demands on design and function. The advantages offered by the rubber material are of particular benefit in this area. They are the perfect combination of design and function – for a design with a system.

nora® floor coverings offer you the potential to implement integral design concepts with different functional properties in the entire hospital. You can choose from more than 300 colours, designs and surfaces in the standard range. Together with the special technical floor coverings a consistent design across various functional areas in a project becomes possible – for a pleasant environment for patients, visitors and staff alike.

### **Rubber: the raw material offering the following principle advantages**

- No PVC, plasticizers (phthalates) or halogens (e.g. chlorine)
- High fire safety – no hydrochloric gas, no hydrochloric acid, no dioxins and no furans
- Safe in fire-toxicological terms complying with DIN 53 436
- Ergonomic properties – high walking comfort
- Easy cleaning – permanently without coating
- Excellent resistance to surface disinfectants
- Good hygienic properties
- Long period of use thanks to excellent wear resistance
- Excellent environmental compatibility
- Improved acoustics thanks to excellent footfall sound absorption
- High slip resistance



**For patients and staff  
to feel good: design  
solutions with nora®**



**For future generations:  
Acting in a sustainable way is  
an element of nora systems'  
philosophy**

# We advocate **sustainability** and a future worth living for

Preserving or even improving the present living and environmental conditions – this means sustainability. For nora systems, sustainability is an important aspect of corporate culture and corporate values. It is our declared goal to meet this responsibility in as many areas of our corporate activities as possible. Sustainable housekeeping, environmental protection and societal-social commitment thus are decisive factors of our daily decision-making.

## **Responsible dealing with natural resources**

The commitment for sustainability follows the decade-long commitment of nora® in environmental protection. Environmental protection continues to be an important element of today's integral concept. nora systems does not only want to give the interior, where nora® floor coverings are used, a creative touch but also wants to reduce the ecological footprint, i.e. save the resources. The development of environmentally compatible products and an environmentally friendly production are thus given priority. The advantages of nora® are obvious:

### **nora® rubber floor coverings**

- do not contain any PVC, plasticizers (phthalates) or halogens (e.g. chlorine)
- are tested for their safety in use
- are regularly monitored by independent institutes
- are installed with eco-compatible accessories such as e.g. solvent-free dispersion adhesives
- are low in emissions
- were received awards by recognised institutes and associations for their environmental compatibility

## **High quality for a long life**

Thanks to their high quality, nora® rubber floor coverings are extremely resistant to abrasion and wear. Even after decades of use in highly frequented areas, nora® floor coverings still look like almost new. This extraordinary long period of use saves the resources of our earth and contributes to a long-term preservation of the real properties' value.

nora® rubber floor coverings are "made in Germany". They are manufactured on state-of-the-art production lines which are subject to strict ecological requirements and designed to minimise the used resources.

nora systems is certified according to international standards such as ISO 9001 (quality management) and ISO 14 001 (environmental management systems).

# Multiple award winner

## with the highest commitment

The Blue Angel, the LEED certification, the ecolabels of the Greenbuilding Council, the Greenguard ecolabel for "Indoor Air Quality" and numerous other ecolabels and awards, which we received in many countries, are proof that we take our responsibility for the environment and society very seriously.

### Commitment in associations

Sustainable buildings are environmentally compatible, economic, efficient and resource-saving. nora systems is actively committed in environmentally compatible living and is founding member of the German Association for Sustainable Building (DGNB). The objective of DGNB is to show ways and solutions for sustainable building in Germany.

nora systems also is an active actor in the U.S. Green Building Council. The USGBC is the most important association of leading representatives of the construction industry to promote environmentally compatible and profitable buildings which offer healthy premises for living and working. The USGBC established the globally known LEED system and thus created an international standard for the classification of environmentally compatible buildings.



Certification to ISO 9001



DGNB

Deutsche Gesellschaft für Nachhaltiges Bauen e.V.





# nora® offers a unique system

## which leaves nothing to be desired

You require a broad range of floor coverings with different functions to equip health care projects: various thicknesses which offer the required pressure load-bearing capability, electrostatically dissipative floor coverings for areas where sensitive, life-sustaining electronic devices are used, floor coverings with shock-absorbing foam back for physiotherapy and sports areas and last but not least sophisticated solutions for the equipment of stairwells.

### Design solutions for the entire hospital

The unique feature of the nora® system is that it offers all these solutions and even another important feature: You can use the different qualities with identical colours and designs in the entire hospital. And you can benefit from the broad colour range, individual combination options and the possibility to implement own patterns or inlays. With the NCS colour system, wall and furniture colours can also be exactly matched to the nora® floor covering colours.

### Hygienic stringers

This system idea is supplemented by a range of high quality accessories. Skirtings and skirting angles guarantee smooth and clean edges. With a special cushion-edged profile, the floor-layer can easily create wall coverings. Margin and angle guards protect wall corners and transport means against damage. Hygienic stringers can be easily implemented using the comprehensive nora® system of prefabricated interior and exterior corners.



**Proper stair nosings and stringers: it's only a matter of the system**



**nora systems can do it: planning with uniform design in the entire hospital**



### **Systems for corridors and stairwells**

Our system solutions for corridors and staircases represent the optimal combination of design, safety and comfort for heavily frequented traffic areas.

- Identical designs and colours on stairs and in corridors for a uniform integrated design
- Complete range of accessories consisting of stair nosings, skirtings, and landing profiles
- Reduced slipping risks thanks to excellent anti-slip properties
- Safety strips (also phosphorescent) integrated in stair nosings and stairtreads
- High footfall sound absorption for noise-reduced stairwells
- Installation on the stair without blocking the stairwell possible with nora® Stepfix 240 special dry adhesive



**Manchester  
Joint Hospital ·  
Manchester ·  
Great Britain  
noraplan® signa**

## Fantastic options for your design ideas

nora systems offers a broad product range for creative designs with almost no limits. With a multifaceted colour and design range and functional materials, the special atmosphere of well-being can be created which promotes a positive course of healing processes.

### **nora systems speaks NCS – the international language of colour communication**

The Natural Color System (NCS) is a precise colour language. As user-friendly colour system, it describes the colours as seen by man. It facilitates the colour communication for designers and architects.

With this system, integral colour and room concepts can be coordinated across industries and independent of materials.

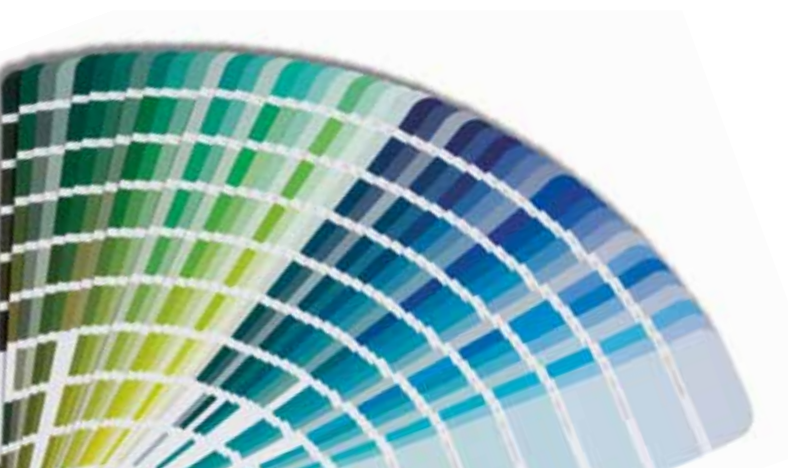
To meet the highest professional demands, nora systems colour-metrically identified all standard colours according to NCS. These colour codes always refer to the closest colour code of the NCS index.

For the NSC colour codes of nora® rubber floor coverings, please visit our website [www.nora.com](http://www.nora.com)



### **nora® – the system for superior design:**

- Broad colour range with more than 300 standard colours
- Numerous designs and surfaces
- Excellently combinable colours and surfaces for the implementation of routing systems, inlay and combination installations





## Anybody loving colours will love nora®

Colours are an important design element for projects in health care because they significantly contribute to a sense of personal well-being and thus to a positive healing process. Colours do not only induce emotional reactions and associations but also physical reactions. In colour therapy, colours are thus specifically used to relieve or cure certain ailments.

### Colour worlds for health care

nora® floor coverings are characterised by their broad colour range. The material rubber facilitates both extraordinary brilliant colour and discrete pastel shades.

With noraplan® signa, nora systems developed a unique floor covering which was specifically designed for use in health care. This floor covering is available in 48 colours with discrete, high-quality designs based on a colour classification system of six different shade groups. The system is rounded off by a comprehensive range of accessories fully matched in colours and creates a range of fantastic options for a successful combination of modern design, high quality and environment-appropriate functionality.



### norament® 926 grano

Rubber floor covering for extremely heavy traffic areas, with hammerblow surface and scatter design.





**noraplan® signa**

Rubber floor covering with a changing base colour of three harmoniously matched colour components and characteristic granule inclusions. Specifically designed for use in health care.

**noraplan® eco**

Rubber floor covering with a calm tone-in-tone granular design.

**noraplan® sentica**

Rubber floor covering with a changing base colour of harmoniously matched colour compositions.

# **Full service** for architects, designers and property developers



nora systems is all about you, our customer. Architects, designers, property developers, property managers or owners – we are working closely with you and help you to bring your vision to life.

## **Individual and up close and personal**

As your project partner, we already support you in the concept phase. Together with you, we develop floor covering solutions which consider the requirements and demands of your project.

Specifically for demanding projects, where special technical knowledge is of essence, do offer our consultants the guarantee you need if it comes to the preparation of the subfloor, the installation or cleaning and care thereafter – best support also for the processors and service providers.

## **Experiencing the nora® range live**

We would be glad to send you samples of the product lines and colours of interest to you. In our Weinheim training and information centre, you can also get an impression of all grades, designs and colours first hand based on original sample installations or sample tiles.

## **Virtual design of rooms**

The nora® Raum Design Studio ([www.nora.com](http://www.nora.com)) offers you the possibility to test the room effect of various nora® products, designs and colours on various areas of hospitals, old people's and nursing homes or doctor's surgeries.

## **Working with inlays**

Implement your inlays based on our specifications or design your own fantasies. In our inlay centre, we produce inlays based on the images, drawings or image files provided by you. Our ultra-modern ultrasound cutting machine cuts almost any motive into 100% matching pieces which can be installed without joint-sealing. To guarantee easy installation, we supply the inlays up to a size of 1.2 x 1.6 metres, fully assembled and ready for laying. For large-sized inlays, we provide the floor layer with detailed laying plans.

## **Training courses for floor layers, property managers and owners**

Use our regular training courses on installation and cleaning to ensure professional installation and long-term satisfaction.

**Tell us about your  
ideas: together  
we will find the  
best solution**





# With nora® nothing is forgotten

Often patients have a limited mobility and cannot use escape facilities as intended in cases of emergency. Health care facilities thus attach high importance to a high level of fire safety and fire-toxicological safety when choosing the fixtures. nora® floor coverings have much to offer in this respect.

## Fire safety

nora® floor coverings meet the common requirements on fire safety and, apart from a few function-related exceptions, are flame-retardant according to EN 13 501, Part 1. We offer special fire-protection grades for areas where non-inflammable materials are required.

## Protection against health-damaging gases

nora® rubber floor coverings do not contain any PVC and halogens (e.g. chlorine). In case of fire, no hydrochloric gas is released which might lead to caustic burns of the respiratory tract. Hydrochloric gas and fire fighting water combine to produce hydrochloric acid which damages buildings, medical devices and electrical contacts even beyond the immediate seat of the fire. Such secondary damages of the combustion of PVC are often more serious than the direct damage caused by the fire.

The absence of halogens also means that no toxic, halogenated dioxins and furans are released by nora® floor coverings in case of fire. For a part of the floor coverings, the gasses released in a fire are classified as fire-toxicologically safe

according to DIN 53 436. Special fire-protection grades can be used in areas where non-inflammable materials are required, with the approval of the local fire safety authorities.

## Slip resistance and rolling traffic capability

nora® floor coverings meet the anti-slip property class R9 according to the directive BGR 181 or GUV-R 181. For areas with specifically high demands on slip resistance, we also offer grades of the classes R10 and even R11.

## No burn marks

The resistance to cigarette burns of nora® floor coverings is an asset, specifically in day rooms and psychiatric hospitals.



PVC



Linoleum



noraplan®





**Good rolling traffic capability does not exclude pleasant walking on the floor coverings and good acoustics.**

# nora<sup>®</sup> saves time – and a lot of money

When selecting the floor coverings, long-term costs become increasingly more important. The acquisition costs for a floor covering only account for approximately 10% of the entire costs. 90% of the costs are paid for care and maintenance during the entire life time.

## nora<sup>®</sup> – easy to clean

nora<sup>®</sup> rubber floor coverings have a dense, closed surface from the start which is provided by «nora cleanguard<sup>®</sup>»; a factory post-curing of the rubber surface on the basis of innovative formulations and state-of-the-art production technology. This combination ensures that nora<sup>®</sup> floor coverings are easy to clean and represent the most economic decision in the long run. \*)

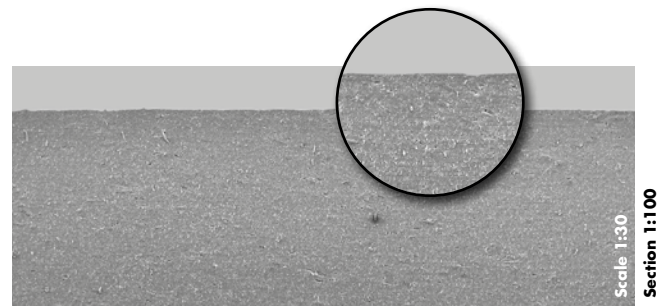
## No coating during the entire period of use

Unlike other types of floor coverings, nora<sup>®</sup> rubber floor coverings do not require any additional coatings or paints. Thus, neither unsightly pathways as a result of use-related abrasion nor increased contamination, chipping, scratches or discolourations of the coating may result.

Time-, labour- and cost-intensive basic cleanings with the related serious organisational interruptions because of long drying periods (8 - 12 hours) can thus be avoided. There are no disposal problems concerning the cleaning water and expensive re-coatings are superfluous.

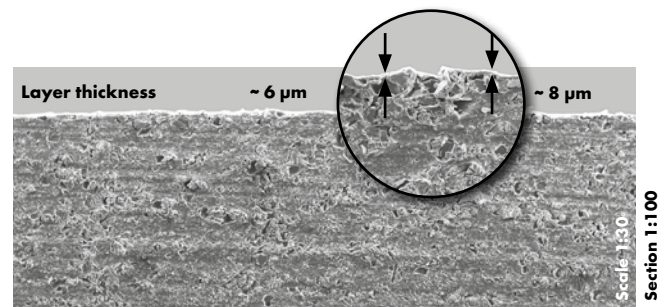
## The scanning electron microscope (SEM) shows the difference:

### nora<sup>®</sup> – rubber through and through – without wearing layer

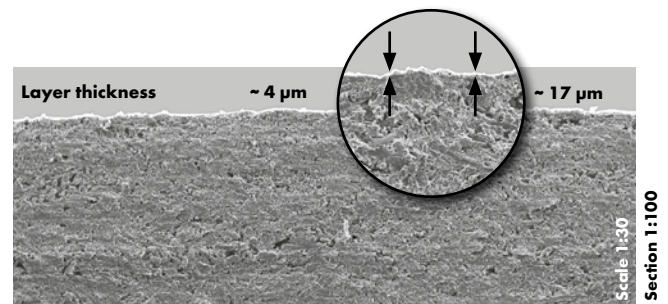


Cross-section nora plan<sup>®</sup> (without coating)

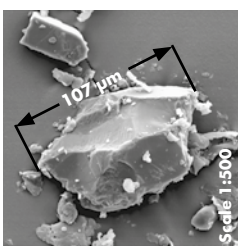
### PU surfaces only have a thickness of a few micrometres (1 $\mu\text{m}$ = $\frac{1}{1000}$ mm) and a limited life.



Cross-section PVC with PU surface



Cross-section linoleum with PU surface



**Dirt particles such as e.g. sand grains may easily damage PVC and linoleum surfaces**

\*) Please note the latest version of our cleaning and care recommendations

### Resistance to stains

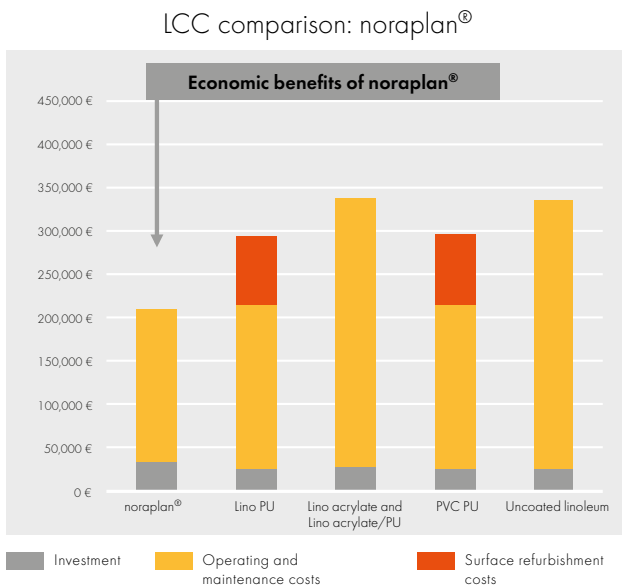
nora<sup>®</sup> floor coverings made of rubber are resistant to stains. Spilled liquids such as coffee, tea or juice can be easily mopped. The floor coverings are resistant to blood and urine. Iodine-containing products as e.g. skin disinfectants (e.g. Betadin) can be removed easily\*). Special cleaning agents were specifically developed for frequently used special hospital media. For further information visit [www.nora.com](http://www.nora.com)

### Huge saving potential

Neutral, independent expert opinions confirm the economy and the huge saving potential when nora<sup>®</sup> rubber floor coverings are used. Please request our detailed brochure on the economy of nora<sup>®</sup> floor coverings.

### Economic efficiency comparison: Life Cycle Costs

**LCC comparison:** | Assumed cleaning scenario for an area of 1,000 m<sup>2</sup> over 15 years.



Typical scenario for areas with moderate strain.  
Details and source: nora systems GmbH

\*) For especially persistent or older stains, we offer nora<sup>®</sup> special cleaning agents for stain removal.



# Our answer to hygiene issues

never changes: **nora**<sup>®</sup>

Many floor coverings are not suitable for use in health care because highly-concentrated disinfectants are used intensively in areas where infection control and hygiene are capitalised. For these applications, nora systems' rubber floor coverings are the right choice.

## **Resistant to all listed surface disinfectants**

nora<sup>®</sup> floor coverings are resistant to surface disinfectants listed in the disinfectant list of the disinfectant commission of the Verbund für Angewandte Hygiene (Disinfectant Commission of the Association for Applied Hygiene) which are typically used for routine disinfection.

For epidemic or other cases of intensive disinfection given contagious diseases, the list of surface disinfectants of the German Robert Koch Institute (RKI) is used. nora<sup>®</sup> floor coverings are also resistant to the surface disinfectants listed there.

## **Optimally suited for hospital routine**

noraplan<sup>®</sup> floor coverings are bacteriostatic and fungistatic. In controlled tests, they did not present any nutrient to the pathogens *Staphylococcus aureus*, *Pseudomonas aeruginosa*, and *Candida albicans*.

Our floor coverings are also suitable for laboratory areas because the short-time exposure to solvents, diluted acids or alkalis does not leave behind any traces.

## **Particularly hygienic because of joint-less installation**

nora<sup>®</sup> floor coverings do not contain any plasticizers. After installation, they thus remain dimensionally stable and do not shrink - unlike other types of floor coverings. A time- and cost-intensive joint-sealing is thus in principle not required\*).

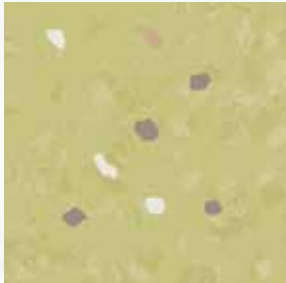
An advantage of installation without joint-sealing is the uniform impression of the installed area. The appearance of the floor covering is also not impaired by joints becoming dirty over time. The complete disinfectability of nora<sup>®</sup> floor coverings which are not joint-sealed was confirmed by a test conducted by the Hygiene Institute of the University of Heidelberg.

## **Seeking an expert**

Hygiene in health care is a complex issue with which we have been successfully dealing for many years. We will be pleased to assist you. Talk to us!

\*) Exceptions: noraplan<sup>®</sup> acoustic floor coverings, noraplan<sup>®</sup> ed floor coverings, areas with humidity-sensitive subfloors as well as rooms with permanent intensive wet cleaning and areas with special demands on hygiene.

**Floor covering  
without joint-sealing**



**Joint-sealing with  
nora® hot welding rod**



**Joint-sealing  
with nora® joint  
sealing compound**



**Hygiene has top priority:  
with nora®, hospitals  
make the right choice.**



# Where others reach their limits, nora<sup>®</sup> just starts

nora<sup>®</sup> floor coverings with their numerous specific properties meet the very complex demands on projects in health care.

- 
- Intensive care units**
    - resistant to surface disinfectants
    - electrostatically dissipative floor coverings
    - easy to clean

- Visitor, day rooms and cafeterias**
  - resistance to cigarette burns

- Entrance areas**
  - representative design · high wear resistance · individual inlays

- Therapy and sports areas**
  - shock-absorbing foam back for good force relief · slip-resistant

### Operating theatres

- resistant to surface disinfectants
- electrostatically dissipative grades
- high standing comfort
- easy to clean · iodine-resistant



### Patient rooms

- colours/homelike atmosphere
- resistance to surface disinfectants
- easy to clean

### Corridors / stairwells

- high level of slip resistance and footfall sound absorption
- easy cleaning · fire safety

### Examination rooms / outpatient department

- good resistance to stains
- electrostatically dissipative floor coverings

### Administration

- comprehensive design options
- raised-access floors possible

### Laboratories

- good resistance to chemicals
- easy to clean
- electrostatically dissipative floor coverings



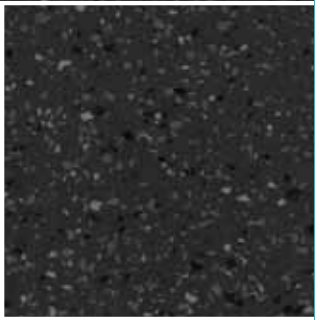


## Entrance areas

### The first impression matters

In the heavily frequented entrance areas of hospitals, outpatient departments and doctor's surgeries, the extraordinary wear resistance of our floor coverings is of particular value. Despite the permanent stress, they still look good even after many years.

The nora® product programme provides the best prerequisites for representative design: The broad range of designs, surfaces and colours can be combined in multiple ways. We also manufacture e.g. individual company logos in our inlay centre as desired by you and deliver them cut to size and ready for laying.



**Not only functional but also attractive:  
the best basis for extraordinary design  
solutions**

**Entrance area · Romford Hospital ·  
Romford, Essex · Great Britain  
norament® 986 luxor**



# Corridors and escape routes

## Where functionality and design meet

Hospital corridors are to offer a high walking comfort, slip resistance and good acoustics. With the permanently resilient nora® rubber floor coverings you are on the right track!

Use the many options to implement design concepts for the entire hospital with the nora® system.

Corridor area • Ospedale di Bressanone • Italy



Corridor area • DRK Paediatric Hospital • Siegen • Germany

# Stairwells and escape stairwells

## Special strengths if time is at a premium

Design, safety and comfort - nora® floor coverings have to offer much even in stairwells. The system guarantees identical design and colours for stairs and corridors; the raw material rubber in addition provides for a high level of slip resistance and footfall sound absorption.

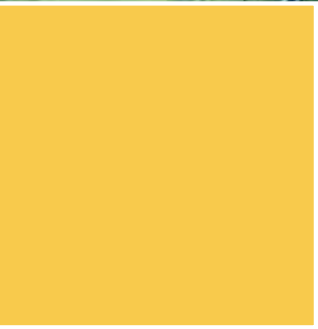
Noticeable safety strips can be integrated into stair nosings and stairtreads - if requested also as phosphorescent strips. The robust norament® steptread makes floor laying very easy. It is also available as version for special fire protection demands.



Stair area with  
norament® stairtreads



Stair area • Hospital Stadtspital  
Waid • Zurich • Switzerland



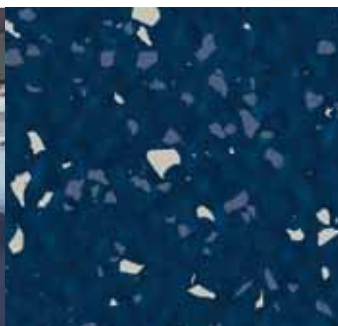


# Patient rooms and **base rooms**

## Hospitals can be beautiful

It is particular in patient rooms and base rooms that a friendly and positive atmosphere contributes to the healing and regeneration process. nora® floor coverings with their broad colour and design range offer all options for harmonious interior design.

**Patient room and base room ·  
Vinzenz-Pallotti-Hospital · Bergisch  
Gladbach-Bensberg · Germany  
norament® 926 grano**





**Stirling Prize 2006**  
 People's Choice Award

**nora**

Winner: Evelina Children's Hospital  
 Architect: Sir Michael Hopkins



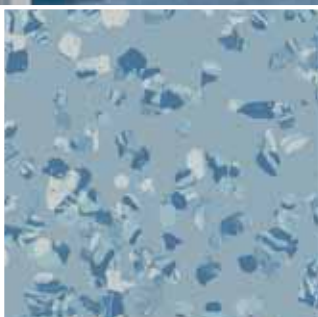
Floorcovering: 14,500sqm of noraplan

Further information on 01455 200000 or log on to [www.nora.com](http://www.nora.com)

# Children's wards, delivery rooms and maternity wards

## Cosy atmosphere for babies, children and parents

Whether you focus your design on the floor or match its colour to a creative wall design - the diverse options of our floor coverings and the individual inlays make visionary and committed cosy environments possible which meet the requirements of children's wards, delivery rooms and maternity wards.



Children's ward • Evelina Children's  
Hospital • London • England  
noraplan® mega • noraplan® uni

# Examination rooms and **outpatient departments**

## Well-protected against electrostatic discharges

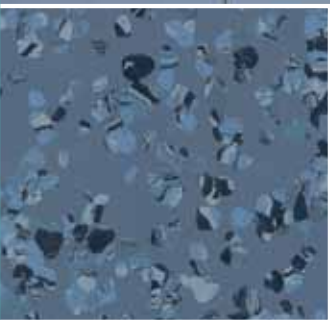
In examination rooms and rooms where minor operations are performed, electronic examination instruments are often used. In these areas, the use of electrostatically dissipative floor coverings is advisable.

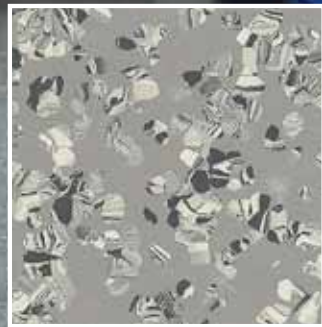
Examination room •  
Heart Centre Bodensee •  
Constance • Germany



Examination room •  
Hôpital de la Gruyère •  
Riaz • Switzerland  
noraplan® mega

Examination room • Kreisspital  
Oberengadin • Samedan •  
Switzerland • noraplan® mega ed







## Operating theatres

Equipping operating theatres requires much experience and know-how. As specialist for these sensitive application areas, nora systems offers electrostatically dissipative floor coverings of various grades and designs.

These floor coverings protect very sensitive, life-sustaining electronic instruments against malfunctions or damage by electrostatic discharges. They also protect against explosions if flammable gas/air mixtures are created.

When using HF surgery, stray currents may be created. Electrostatically dissipative floor coverings with a minimum insulation resistance also protect both the surgeon and the patient, offering a high level of safety.

Since heavy equipment such as C-arms or transporters for operating theatre tables are moved on rolls, very high

demands are made on the mechanical load-carrying capacity of the floor covering in the operating theatre area. A thick floor covering transmits these concentrated loads to the subfloor evenly distributed across a larger surface. Damages to the subfloor can thus be avoided.

### **For operating theatres, we commend the floor coverings**

noraplan® signa ed, 3.0 mm  
noraplan® sentica ed, 3.0 mm  
norament® 928 grano ed, 3.5 mm

**Ergonomics in the operating theatre means high standing comfort – the permanently resilient nora® rubber floor coverings offer specific advantages**



**Hessingpark-Clinic ·  
Augsburg · Germany**

# Intensive care units

## Competent solutions for sensitive areas of application

Highly sensitive electronic instruments of vital importance for patients are also used in intensive care units. These instruments have to be protected against electrostatic discharges. An electrostatically dissipative floor covering offers the required safety. The conductivity requirements are typically defined by the manufacturer of the used electrical instruments.

The aspects of hygiene, the use of disinfectants and the exposure to discolouring medical substances are of importance in intensive care units. With our comprehensive experience and our proven and tested product solutions, we will assist you in finding the ideal solution.



**Intensivstation**  
Kein Eingang für Besucher

**Intensive care unit ·  
Heart Centre Bodensee ·  
Constance · Germany**





**Intensive care unit ·  
University hospital ·  
Mainz · Germany  
noraplan® mega ed**





# Physiotherapy rooms and sports areas

## Optimal conditions for exercise therapy

In physiotherapy, a highly resilient floor covering with good footfall sound absorption offers additional comfort. Our recommendation: Use the noraplan® acoustic floor covering with shock-absorbing foam back.



4 mm which provide safety  
– noraplan® acoustic reduces  
impact forces



Physiotherapy room • Trauma  
Hospital Murnau • Germany  
noraplan® stone acoustic



Multipurpose hall • Fitness area •  
Hospital Siloah • Gümlingen • Switzerland

# Visitor and day rooms, cafeterias

## Switching off and relaxing

In visitor rooms and day rooms, nora<sup>®</sup> floor coverings contribute to a pleasant atmosphere. In smokers' rooms, our floor coverings are also the right choice because they are resistant to cigarette burns.

**Cafeteria · Lungenfachklinik  
Wangen · Germany  
noraplan<sup>®</sup> mega**



**Day room · Hospital Stadtspital  
Waid · Zurich · Switzerland  
noraplan<sup>®</sup> uni**



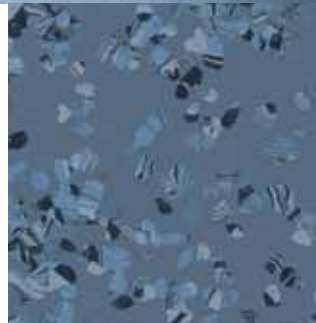
# Laboratories

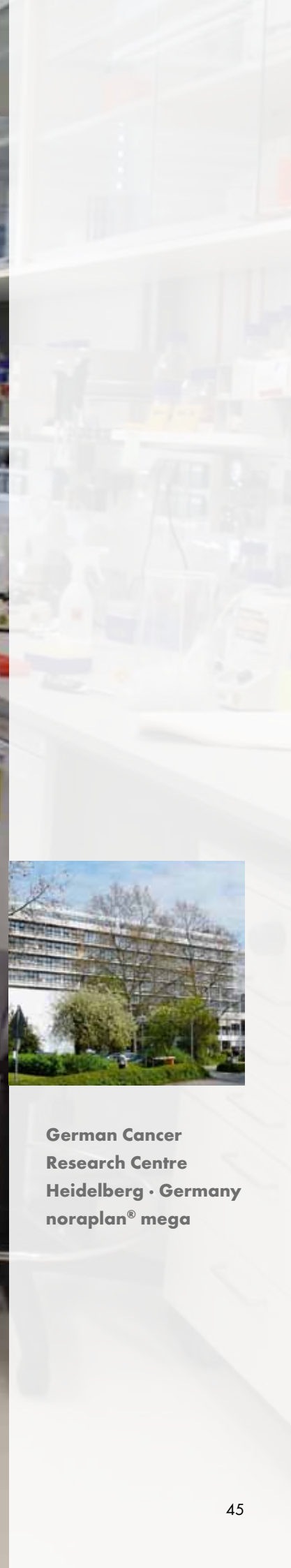
## Optimally prepared for acids, alkalis and other substances

In laboratory areas, the insensitivity to stains of our floor coverings plays an important role. Even a short-time exposure to diluted solvents, acids or alkalis may not damage the nora® floor coverings.

Laboratories in health care are equipped and used in many ways. If electronic analysis devices are used or if explosive gas/air mixtures are created, electrostatically conductive and dissipative floor coverings are advisable.

**Laboratory · Bethesda Geriatric  
Hospital Ulm · Germany  
noraplan® mega ed**





**German Cancer  
Research Centre  
Heidelberg · Germany  
noraplan® mega**



**For more than 30 years  
in use in the technical  
departments of the  
University Hospital  
Aachen · Germany  
norament® 926**





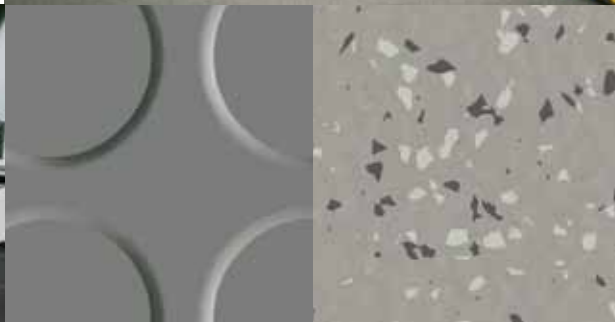
## Technical areas

### Quality put to the test

Technical areas include for example workshops, laundries, storage rooms or power rooms. These areas are often separated from the medical hospital operations.

Decisive factors for the selection of floor coverings for these areas are above all wear resistance and a high dynamic load-bearing capability if fork lift trucks are used. Even for those applications, our extremely resistant rubber floor coverings are the ideal solution.

### Floor covering suitable for driverless transport systems norament® 928 grano ed



# Administrative areas

## Everything for a pleasant working environment

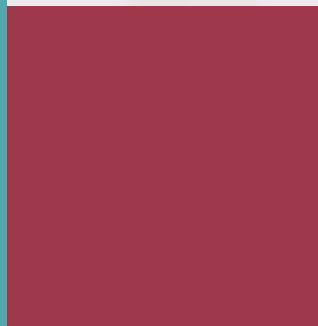
For the design of the administrative areas, nora systems offers a broad range of friendly colours and attractive surfaces and designs. Excellent walking and standing comfort and good acoustics contribute to a pleasant working atmosphere.

Even raised-access floors are no problem for nora®.





**noraplan® floor covering  
on raised-access floor**



# Recommended areas **of application**

<b>noraplan®: signa · eco</b>	<b>noraplan® ed 2 mm: signa ed</b>	<b>noraplan® ed 3 mm: signa ed</b>	<b>noraplan® acoustic: signa</b>	<b>norament® 926 grano</b>	<b>norament® 928 ed · Art. 399</b>	<b>norament® 928 grano ed</b>	
■				■			Entrance areas
■			■	■			Corridors
■	■			■			Patient rooms / Base rooms
■	■	■		■		■	Examination rooms / Outpatient departments
		■				■	Operating theatres
	■	■				■	Intensive care units
■	■	■				■	X-ray rooms / Computer tomography
■			■				Physiotherapy / Sports areas
■				■			Psychiatric department
■				■			Visitor rooms / Day rooms
■				■			Cafeterias
■	■			■	■	■	Laboratories
				■	■	■	Technical areas
■				■			Administration

■ fully suitable

■ conditionally suitable, function-related limitations; please contact us



**nora systems Shanghai Co. Ltd.**

10 A/B, Long Life Building | 1566 Yan'an Road West | 200052 Shanghai, PR China  
Tel.: +86 21 - 3226 0077 | Fax: +86 21 - 5258 1958  
[www.nora.com/cn](http://www.nora.com/cn)

**nora systems GmbH (JLT Branch)**

2008 HDS Business Centre | Jumeirah Lakes Towers | PO Box 478392 | Dubai, UAE  
Tel.: +971 (4) 450 8175 | Fax: +971 (4) 450 8374  
E-Mail: [info@nora.com](mailto:info@nora.com)  
[www.nora.com/corp](http://www.nora.com/corp)

**nora flooring systems UK Ltd.**

4-5 Allerton Road | Rugby CV23 0PA, Great Britain  
Direct Dial Numbers: (01788) 513 160 - 513 169  
Fax: (01788) 55 28 12  
E-Mail: [info-uk@nora.com](mailto:info-uk@nora.com)  
[www.nora.com/uk](http://www.nora.com/uk)

**nora systems GmbH**

Höhnerweg 2-4 | 69469 Weinheim, Germany  
Tel.: +49 (0) 6201 - 80 66 33  
E-Mail: [info@nora.com](mailto:info@nora.com)  
[www.nora.com](http://www.nora.com)