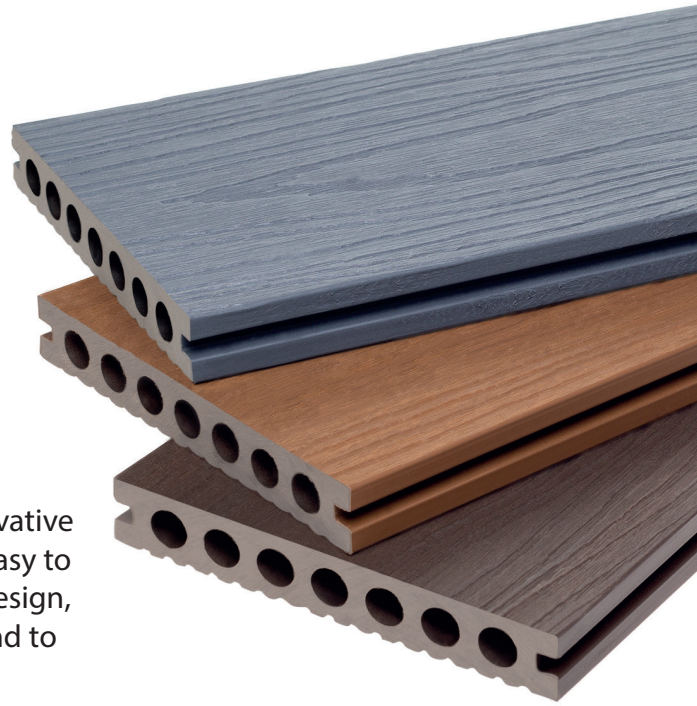


ADVANCED COMPOSITE DECKING

A hollow board without the compromise, our Advanced decking range comes equipped with a lightweight, yet hardy design at an affordable price.

The Advanced decking range delivers the benefits of our innovative composite decking material in a lighter weight design that's easy to handle and install. The range also comes with a hollow tube design, an embossed woodgrain aesthetic and high slip resistance. And to top it off we offer a 25 year residential warranty.



WHY CHOOSE NEOTIMBER ADVANCED DECKING?

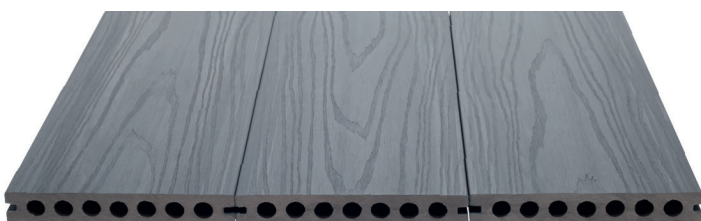
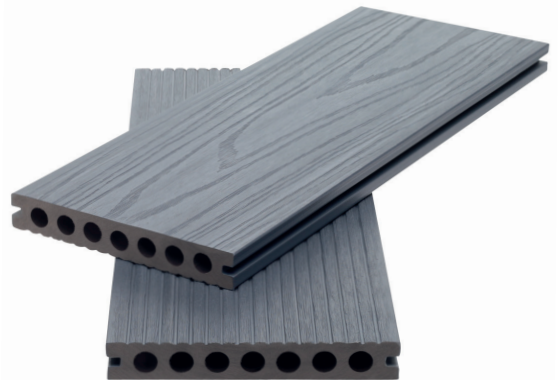


HOLLOW TUBE DESIGN

The Advanced range comes equipped with a hollow 'tube' design, which promises a lightweight composition without the compromise on strength and durability. What's more, we remove a fraction of the material within the core in order to better match the strength of the board's solid alternative.

REVERSIBLE FINISH

Unlike some other capped composite boards, our Advanced range comes with a 360-degree capping that wraps the entire board. This results in not only superior protection from the elements, but also offers a reversible design. The choice between grooves or woodgrain is yours.



EMBOSSSED WOODGRAIN

The external capping of the Advanced range provides the boards with an embossed woodgrain finish that is two tone in appearance. Designed to mimic the authentic feel of timber, the Advanced range is designed to act as an extension to your indoor flooring, joining your indoor retreat to your outdoor oasis.

TECHNICAL SPECIFICATIONS

BOARD DIMENSIONS

143mm (W) x 21.5mm (D) x 3600mm (L)

WEIGHT PER BOARD

10.48kg

LOW MAINTENANCE

★★★★★

DURABILITY

★★★★★

FADE RESISTANCE

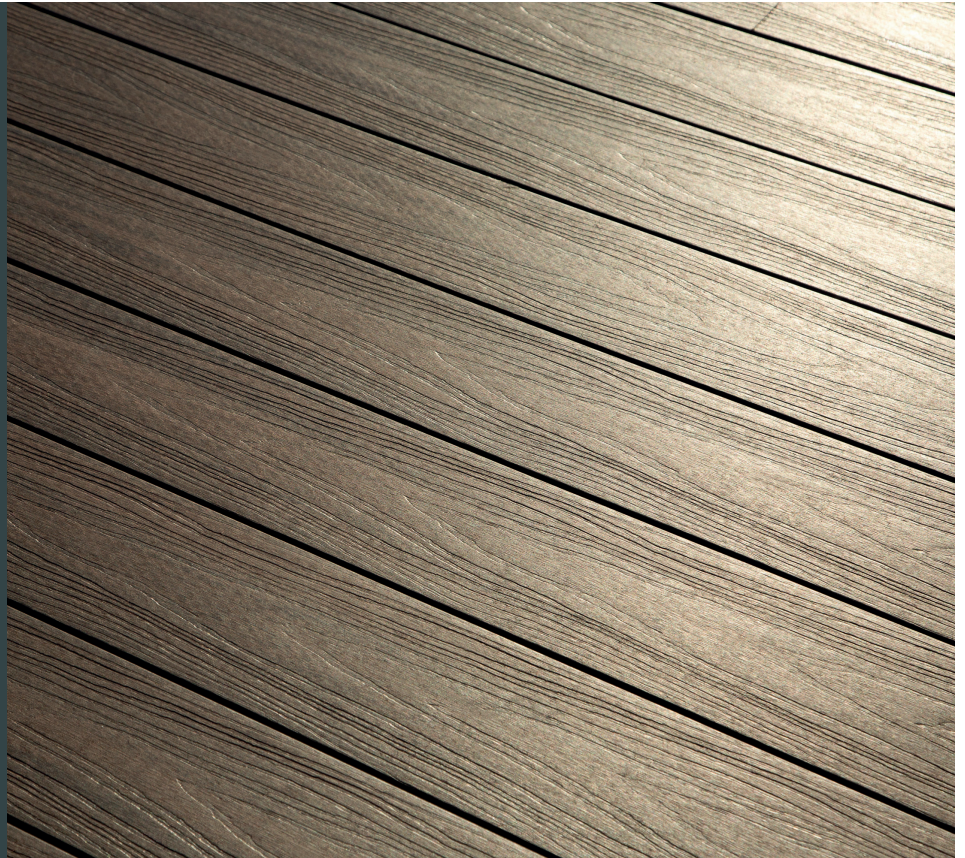
★★★★★

STAIN RESISTANCE

★★★★★

SLIP RESISTANCE

★★★★☆



PERFORMANCE DATA

Characteristics	Method	Result
Density	ASTM D792-13, Method A	1.27g/cm ³
Flexural Strength	ASTM D7032-17	26.9 Mpa
Flexural Stiffness	ASTM D7032-17	3813 Mpa
Maximum Load	EN 15534-1:2014+A1:2017	3739 N
Impact Resistance	ASTM D4812-19	66 J/m
Durometer Hardness	ASTM D2240-15ε1	67.8 Shore D
Tensile Strength	ISO 527-2:2012	23.0 Mpa
Water Absorption	ASTM D570-98:R2018	0.13%
Linear Thermal Expansion	EN 15534-1:2014+A1:2017	37.8x10 ⁻⁶ K ⁻¹
Reaction to Fire	EN 13501-1	C fl - s1
Slip Resistance	BS 7976-2:2002+A1:2013	0.36 - 0.88 (See Below)

Slip Resistance Test Results	Condition	Woodgrain Side	Grooved Side
Longitudinal	Dry	● 82	● 80
Horizontal	Dry	● 84	● 88
Diagonal	Dry	● 82	● 85
Longitudinal	Wet	● 36	● 40
Horizontal	Wet	● 40	● 47
Diagonal	Wet	● 40	● 44

Pendulum Test Values

- Low Slip Potential (36+ PTV)
- Moderate Slip Potential (25-35 PTV)
- High Slip Potential (0-24 PTV)

GREY. TEAK. CHOCOLATE. THE ADVANCED COLOURS.



Grey



Teak

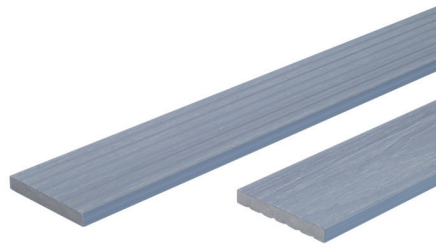


Chocolate

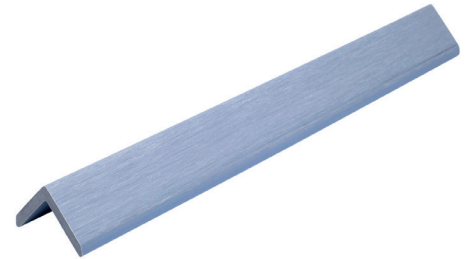
SUPPLEMENTARY ACCESSORIES



Advanced Edge Board
Dimensions: 143mm x 21.5mm x 3600mm



Advanced Skirting Trim
Dimensions: 70mm x 10mm x 3600mm



Advanced Corner Trim
Dimensions: 45mm x 45mm x 3600mm



Starter Clip Set
100 units per box



3mm Metal FastClip Set
100 units per box



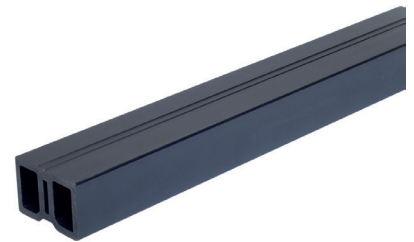
6mm Plastic FastClip Set
100 units per box



Coloured Decking Screws
Dimensions: 5mm x 50mm
100 units per box



Coloured Trim Screws
Dimensions: 4mm x 35mm
100 units per box



Composite Joists
Dimensions: 59mm x 40mm x 3600mm

Need help?
Call us on 01509 323 170
or email enquiries@neotimber.com