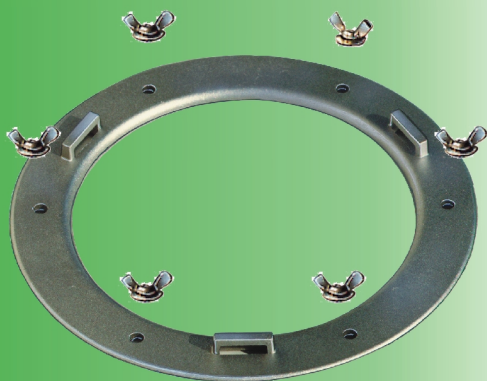
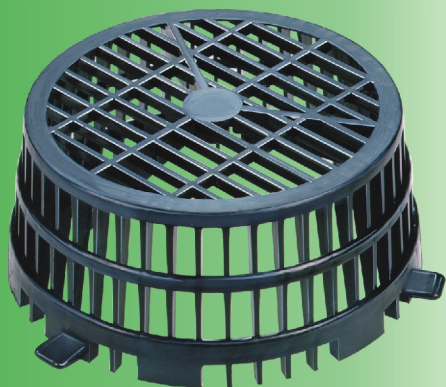


“SURE FIX” IN IGOMM EE



SURE FIX is one of the best means of connecting a roof system to an outlet drain and is particularly indicated for use on flat roof applications for either commercial or residential buildings.

The fastening and the seal between the roof system is achieved mechanically and thanks to its versatility the drain unit can be used with all types of waterproofing materials. The unit and its accessories have been studied in the minutest detail thus giving a product which far surpasses the characteristics of other normal products currently available.

DESCRIPTION

The unit consists of, a flexible circular flange with 6 stainless steel lugs. A flat funnel 30 mm thick and 170 mm in diameter to ensure that even storm water will flow quickly into the unit.

The unit is available in 2 lengths. Standard length is 330 mm but a 485 mm long unit is also available. Pipe diameter available are 75-80-100-125-150 mm.

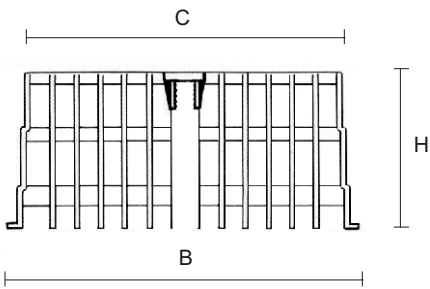
The unit is supplied with a 5076 aluminium ring, 3.5 mm thick and a diameter of 220 mm which has 3 locating lugs and 6 holes for the fixing of either a gravel ring or a leaf guard.

Gravel ring and/or leaf guard is 80 mm high and has a diameter at its base of 180 mm and 160 mm at its top and clips into position on the locating lugs on the ring.

The unit is made from IGOM.EE synthetic rubber which has excellent physical and chemical characteristics and can fulfil all the elastic characteristics required of such an article.

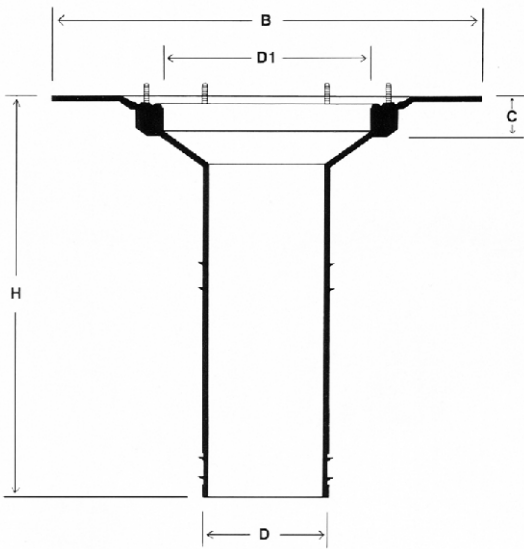
The specially formulated IGOM.EE has extremely high resistance to breakdown by sunlight, ozone and other chemical or atmospheric agents. The unit can be used in a wide range of temperatures giving high flexibility in the low temperature range as well as stability in time thanks to its excellent mechanical characteristics. Thanks to their high quality the materials used will ensure perfect performance through the years. The aluminium ring is corrosion resistant and the 6 butterfly nuts which are also in stainless steel ensure a perfect seal with all the waterproofing membrane and in such a case there is no need to seal the flange to the membrane. The drain unit can be dismantled and reused.

INSTALLATION METHOD



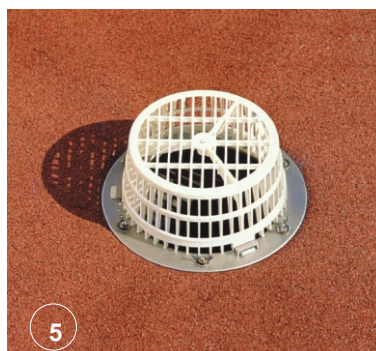
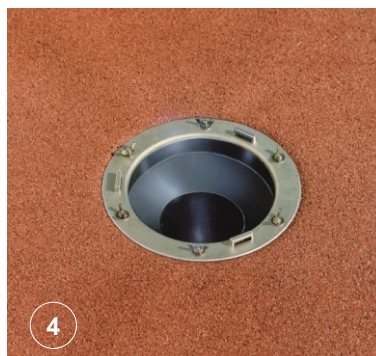
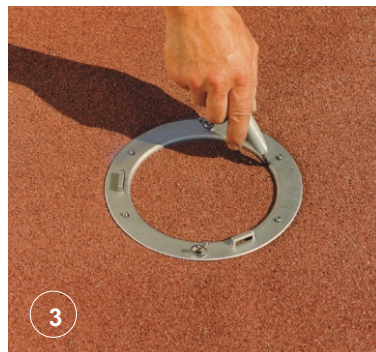
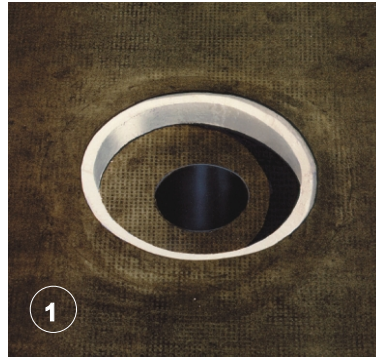
LEAF GRATE and/or GRAVEL GRATE

| | |
|------|-----|
| ART. | 24 |
| B | 180 |
| H | 80 |
| C | 160 |

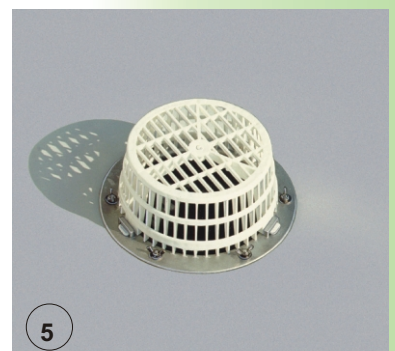
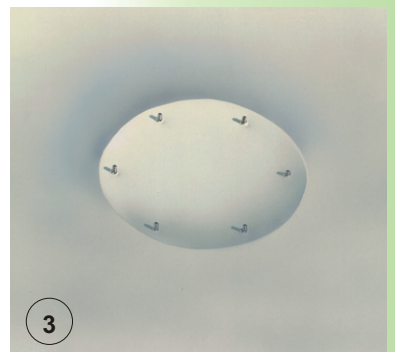
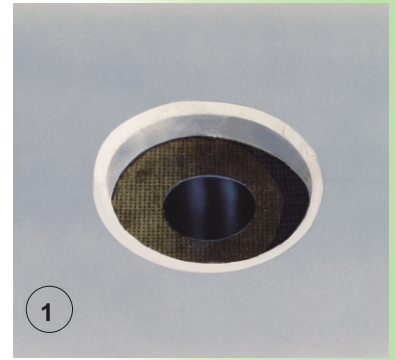


| | | | | | | |
|-------|-----|-----|-----|-----|-----|-----|
| ART. | 129 | 130 | 132 | 133 | 134 | 136 |
| DENOM | 75 | 80 | 100 | 110 | 125 | 150 |
| B | 340 | 340 | 340 | 340 | 340 | 340 |
| H | 330 | 330 | 330 | 330 | 330 | 330 |
| D | 75 | 80 | 100 | 110 | 125 | 150 |
| D1 | 170 | 170 | 170 | 170 | 170 | 170 |
| C | 30 | 30 | 30 | 30 | 30 | 30 |

BITUMINOUS MEMBRANES



SYNTHETIC MEMBRANES



INSTALLATION METHOD

1. Place the unit over the drain pipe.
2. Install the waterproofing membranes.
3. Press the membrane over the lugs so that their position is evident. Carefully cut the membrane over the lugs so that they protrude through the membrane.
4. Place the ring over the lugs and hold in position with 2 bolts and cut the membrane from inside the ring.
5. Position and fasten the other bolts and washers, position the leaf guard/gravel ring.