

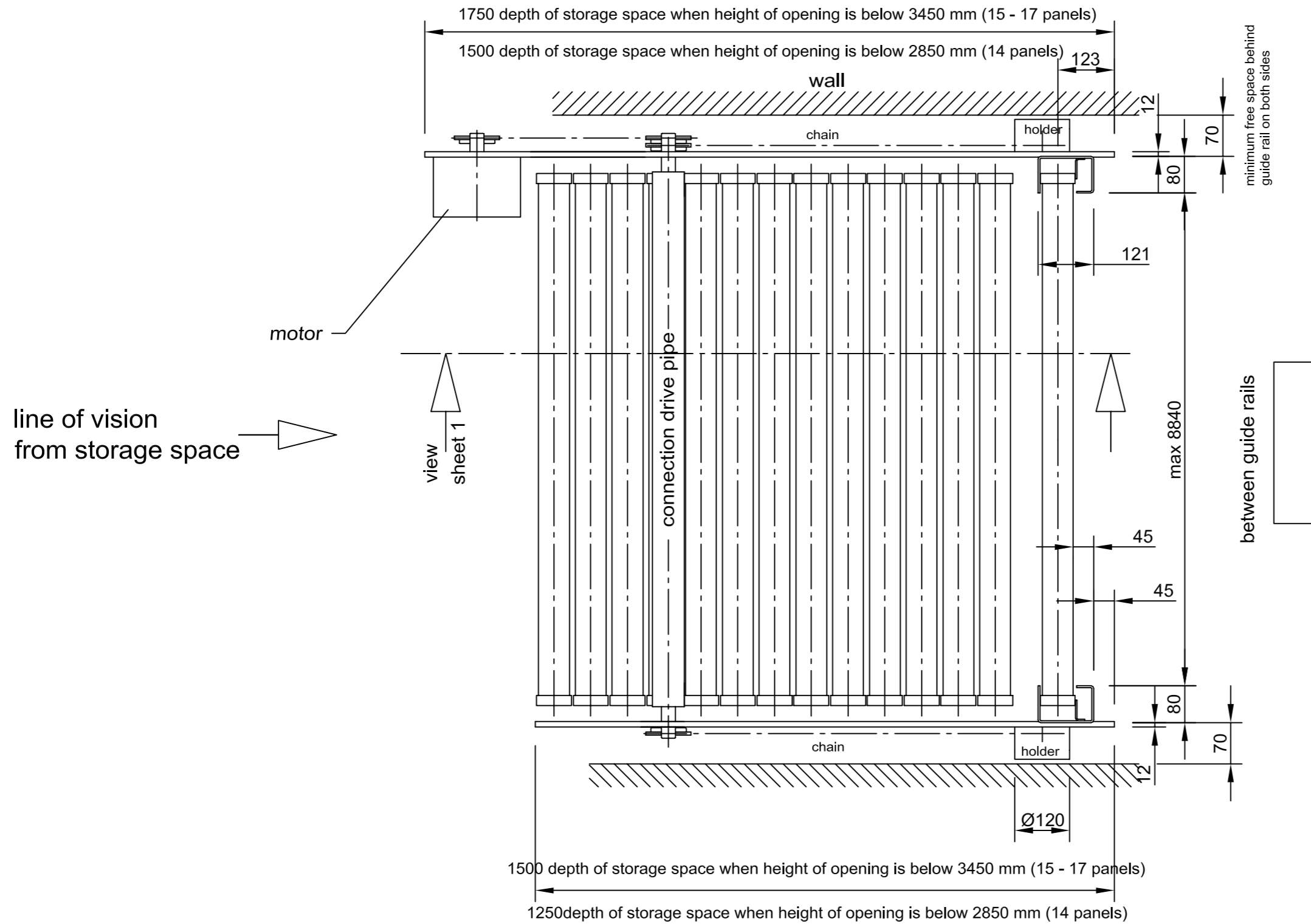
moving condition

Installation drawing
S 67/0 + S 67/SD
Dimensions in mm
Scale 1:10

Weight /m² wall
S67/0 = 320 N
S67/SD = 440 N

weight of drive train
with railings
app. 1500 N

Motor
400 V (230 V)



Installation drawing
S 67/0 + S 67/SD
Dimensions in mm
Scale 1:10

Weight /m² wall
S67/0 = 320 N
S67/SD = 440 N

weight of drive train
with railings
app. 1500 N

Motor
400 V (230 V)