

## Installation drawing

GG/2-500

Dimensions in mm

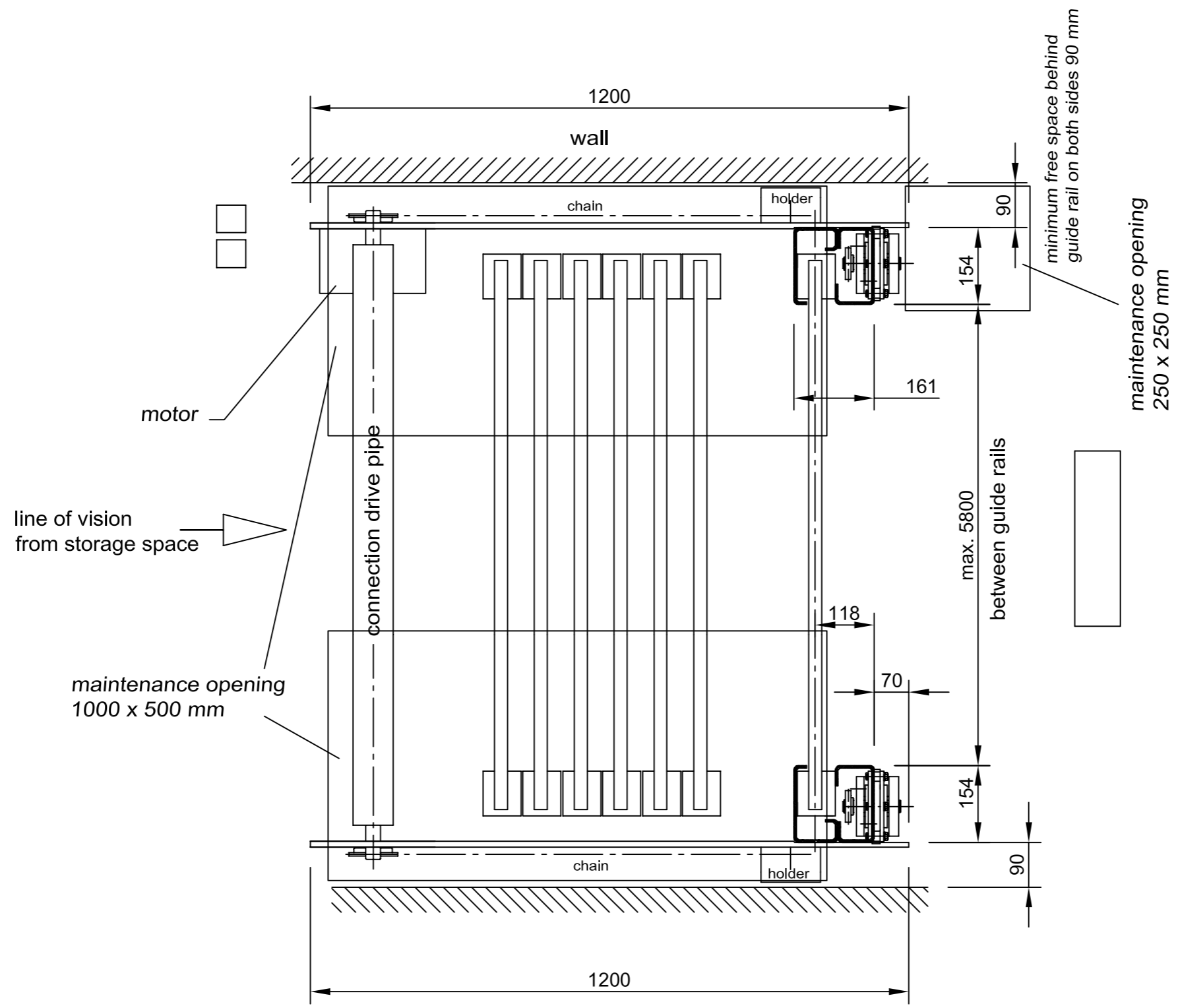
Scale 1:10

Weight /m<sup>2</sup> wall  
2 x 10mm glass  
420 N

2 x 12mm glass  
630 N

weight of drive train  
with railings  
app. 1750 N

Motor  
400 V (230 V)

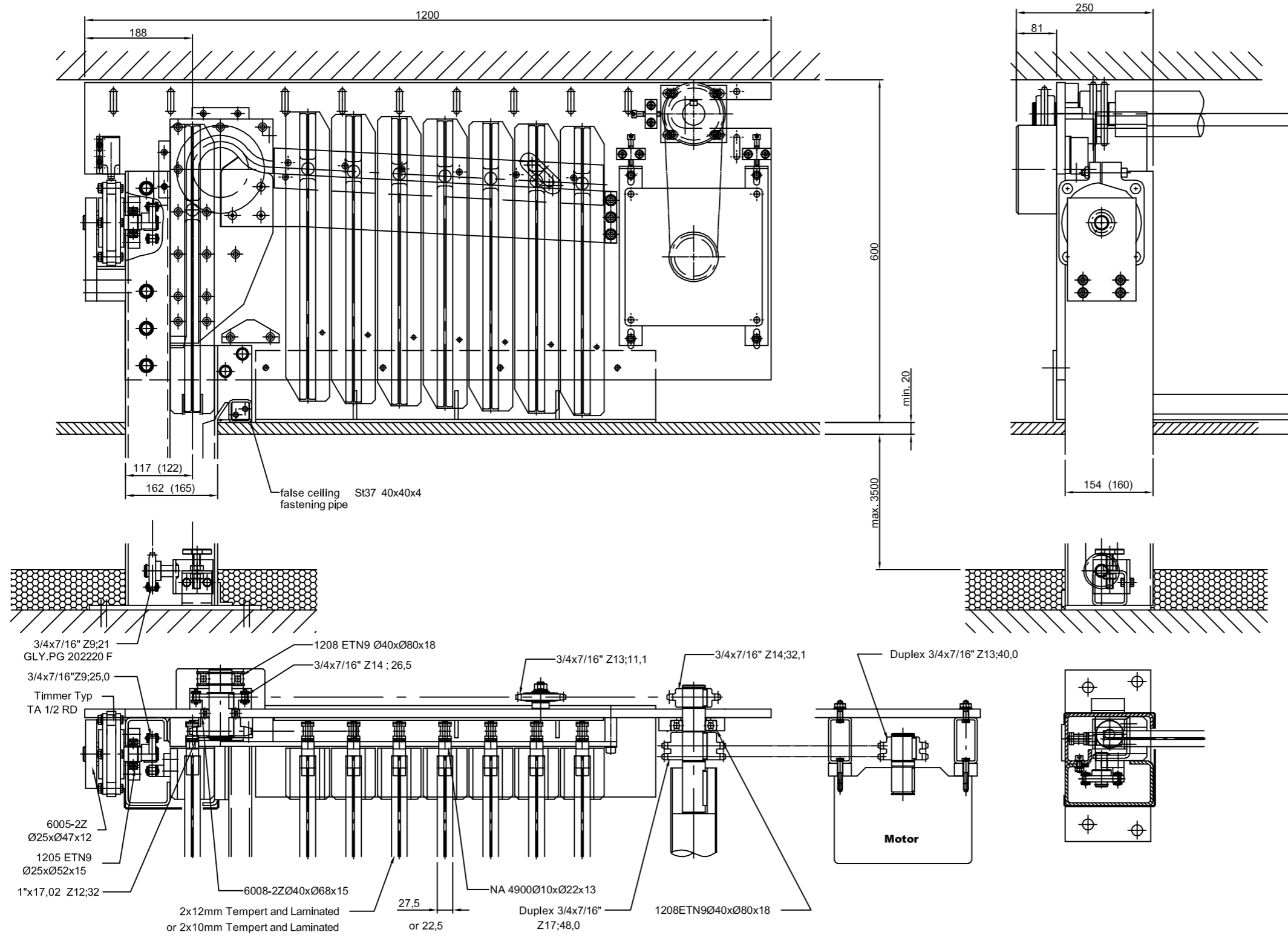


**Installation drawing**  
**GG/2-500**  
**Dimensions in mm**  
**Scale 1:10**

<i>Weight /m<sup>2</sup> wall</i>	
<i>2 x 10mm glass</i>	<i>2 x 12mm glass</i>
<i>420 N</i>	<i>630 N</i>

*weight of drive train  
with railings  
app. 1750 N*

*Motor  
400 V (230 V)*



Height of individual end cap	= 505 mm
Height of individual glass element	= 500 mm
Gap in closed position between glass	= 5 mm
Gap during opening between glass	= 8 mm
total weight of drive train	= 1800 N
Weight of glass 23,5 mm thick	= 640 N/m <sup>2</sup>
Max. height of wall	= 3500 mm
Max. length in between guide rails	= 5692 mm
Max. length behind guide rails	= 6000 mm

**Drive train**  
**GG/2-500**  
**Self locking 7 panels**  
**Dimension in mm**  
**Scale 1:8**