



Air-Precision

Quality Delivered Fast

Monodraught are the recognised market leaders in ultra-low carbon, low energy solutions for Natural Ventilation, Natural Cooling and Natural Lighting.

WINDCATCHER®, **SUNPIPE®** and **COOL-PHASE®** brands are synonymous with quality and innovation (ISO9001 & 14001) and are supported by our market leading design service.

A new addition to the Monodraught portfolio is our extensive range of **Air-Precision** products (Grilles, Diffusers, External Louvres and Volume Control Dampers).

PRODUCT RANGE OF GRILLES, DIFFUSERS, LOUVRES AND DAMPERS

We are supporting this range with:

- £1 million of fast moving stock
- Bespoke manufacture with any standard RAL colour within 5 days
- 15 dedicated selection experts
- Designed with industry leading software
- Belimo actuators used throughout
- AA5 anodisation (ISO7599) utilised
- Market leading quality fully supported by a 10 year guarantee.

We are confident that we can beat any quotation you have by 10% so please contact us on **01494897700** or email us on **air-precision@monodraught.com**



T: 01494 897700
 W: www.monodraught.com
 E: air-precision@monodraught.com
 Halifax House, Cressex Business Park
 High Wycombe HP12 3SE

STANDARD WEATHER LOUVRES

Series WL standard weather louvres are the standard weather louvre used in countless installations throughout the world.

Available in four formats to suit any size installation, all WL types have a single bank of blades with a 45° face for good levels of rain resistance in the most demanding conditions.

Minimal resistance to airflow is assured with an approximate free area of 50% on all series.

Advised break points for switching between series:

- WL38: Up to 1 m²
- WL50: Between 1 m² and 1.5 m²
- WL75: Anything above 1.5 m²
- WL100: By request only



- **Materials:**
 - » Extruded aluminium
- **Construction:**
 - » BZP steel screws or aluminium pop rivets
- **BSRIA Testing:**
 - » Series WL50 and WL75 standard weather louvres have been tested against BS EN 13030:2001



- **Performance:** Both WL50 and WL75 louvres were tested with an optional rear mounted drip tray, this will have had negligible impact on airflow but a large impact on rain resistance. The headline figures for each series are shown below:
 - » **WL50 - DT: (WL50 complete with rear mounted drip tray)**
 - Mean airflow coefficient: 0.314 (Class 2)
 - Rain rejection: Class C up to 2m/s draw velocity and Class D above 2 m/s draw velocity
 - » **WL75 - DT: (WL75 complete with rear mounted drip tray)**
 - Mean airflow coefficient: 0.252 (Class 3)
 - Rain rejection: Class C up to 1.5 m/s draw velocity and Class D above 1.5 m/s draw velocity

OPTIONS

- **Size:**
 (overall w x h [mm])
 See below stock nominal sizes available (If your requirement is not shown in the following tables please contact us)

SERIES WL38:

H	WIDTH																		
	150	200	250	300	350	400	450	500	550	600	650	700	750	800	850	900	950	1000	
150																			
200																			
250																			
300																			
350																			
400																			
450																			
500																			
550																			
600																			
650																			
700																			
750																			
800																			
850																			
900																			
950																			
1000																			



T: 01494 897700
 W: www.monodraught.com
 E: air-precision@monodraught.com
 Halifax House, Cressex Business Park
 High Wycombe HP12 3SE

STANDARD WEATHER LOUVRES

SERIES WL38 (LARGE FORMAT):

H	WIDTH												
	300	450	600	750	700	750	900	1050	1200	1350	1500	1650	1800
300	Please see SERIES WL38												
375													
450													
525													
600													
675													
750													
825													
900													
975													
1050													
1125													
1200													
1275													
1350													
1425													
1500													
1575													
1650													
1725													
1800													
1875													
1950													
2025													
2100													
2175													
2250													
2325													
2400													

SERIES WL50 and SERIES WL75/WL100:

H	WIDTH												
	300	450	600	750	900	1050	1200	1350	1500	1650	1800		
300													
375													
450													
525													
600													
675													
750													
825													
900													
975													
1050													
1125													
1200													
1275													
1350													
1425													
1500													
1575													
1650													
1725													
1800													
1875													
1950													
2025													
2100													
2175													
2250													
2325													
2400													

- **Series:**
 - » WL38: 38mm pitch weather louvre
 - » WL50: 50mm pitch weather louvre
 - » WL75: 75mm pitch weather louvre
 - » WL100: 100mm pitch weather louvre
- **Debric Screens:**
 - » BS: Bird screen (12mm x 12mm mesh)
 - » IS: Insect screen
- **Finish:**
 - » Mill: Mill aluminium (standard)
 - » SAA: Satin anodised - AA5 (optional with WL38)
 - » RAL: Polyester powder coated to RAL
 - » BS: Polyester powder coated to BS

- **Flanges:**
 - » 30FW: WL38 and WL50 30 mm flat flange (standard)
 - » 50FS: 50 mm flat flange - shallow (optional)
 - » 75FS: 75 mm flat flange - shallow (optional)
 - » 100FS: 100 mm flat flange - shallow (optional)
 - » 50FD: WL75 and WL100: 50 mm flat flange - deep (standard)
 - » 75FD: 75 mm flat flange - deep (optional)
 - » 100FD: 100 mm flat flange - deep (optional)

The following table shows the standard and optional flanges available for each louvre series, along with ordering codes and dimensions. These are only standard frame types (If your requirement is not shown in the following table please contact us):





T: 01494 897700
 W: www.monodraught.com
 E: air-precision@monodraught.com
 Halifax House, Cressex Business Park
 High Wycombe HP12 3SE

STANDARD WEATHER LOUVRES

FLANGES:

WL SERIES	FRAME CODE	DESCRIPTION	STANDARD OR OPTIONAL	NOMINAL TO OVERALL SIZE	OVERALL DEPTH
WL38 and WL50	30FW	30 mm flat	Standard	+ 45 mm	46 mm
	50FS	50 mm flat (shallow)	Optional	+ 80 mm	50 mm
	75FS	76 mm flat (shallow)	Optional	+ 130 mm	51 mm
	100FS	102 mm flat (shallow)	Optional	+ 180 mm	51 mm
EL75 and WL100	50FD	50 mm flat (deep)	Standard	+ 80 mm	75 mm
	75FD	76 mm flat (deep)	Optional	+ 130 mm	76 mm
	100FD	102 mm flat (deep)	Optional	+ 180 mm	102 mm

• **Fixings:**

» **None: (Standard)**

Most weather louvres are supplied with no fixings. In this instance we recommend drilling through either the louvre flange, or the neck, and screwing directly into the supporting structure with an appropriate fixing.



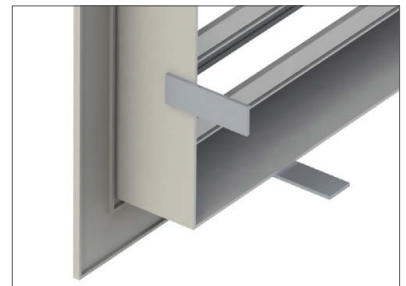
» **FH: Predrilled face fixing holes**

5.7 mm countersunk fixing holes will be punched into the louvre frame before powder coating, allowing quick and easy fitting on site. Number and layout of fixing holes will be appropriate to louvre size. Arrangements can be specified. Supplied with pozidrive self tapping screws in the same finish as the louvre. Only available with flanged and reversed flange louvres.



» **FL: Rear mounted concealed fixing lugs**

3 mm thick, 25mm wide aluminium lugs, protruding 50 mm from the back of the louvre neck can be factory fitted to your louvre. Lugs are supplied undrilled to accept whatever fixing is required on site, and are either welded or double riveted to the louvre. An appropriate amount of lugs will be fitted to suit the louvre size. Only available with flanged and recessed louvres.



» **GZ: Glazing bar. State depth required**

For true bespoke installations, mitred sections can be made to suit corners. Whether these are a standard 90° corner for ceiling fitting, or an internal or external corner for sidewall fitting at an angle other than 90° we can manufacture them.

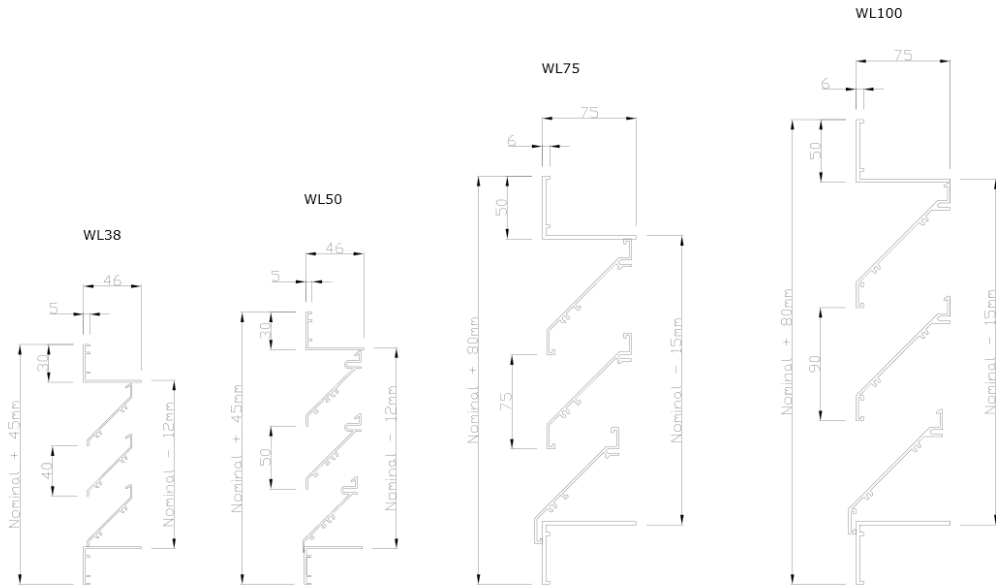




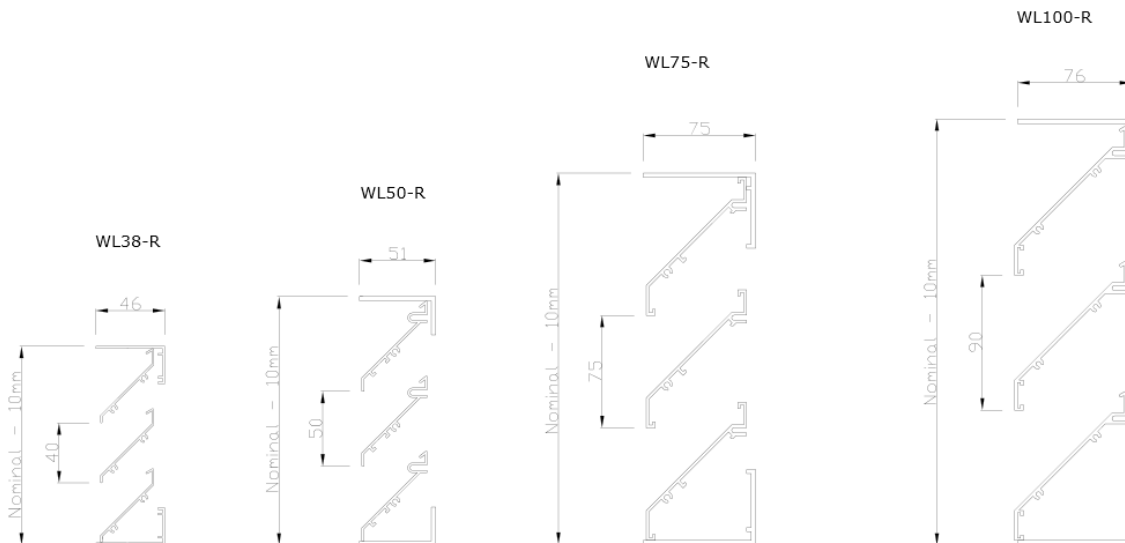
T: 01494 897700
 W: www.monodraught.com
 E: air-precision@monodraught.com
 Halifax House, Cressex Business Park
 High Wycombe HP12 3SE

STANDARD WEATHER LOUVRES

- Frame type:
 - » None: Flanged (Standard)



- » R: Recessed

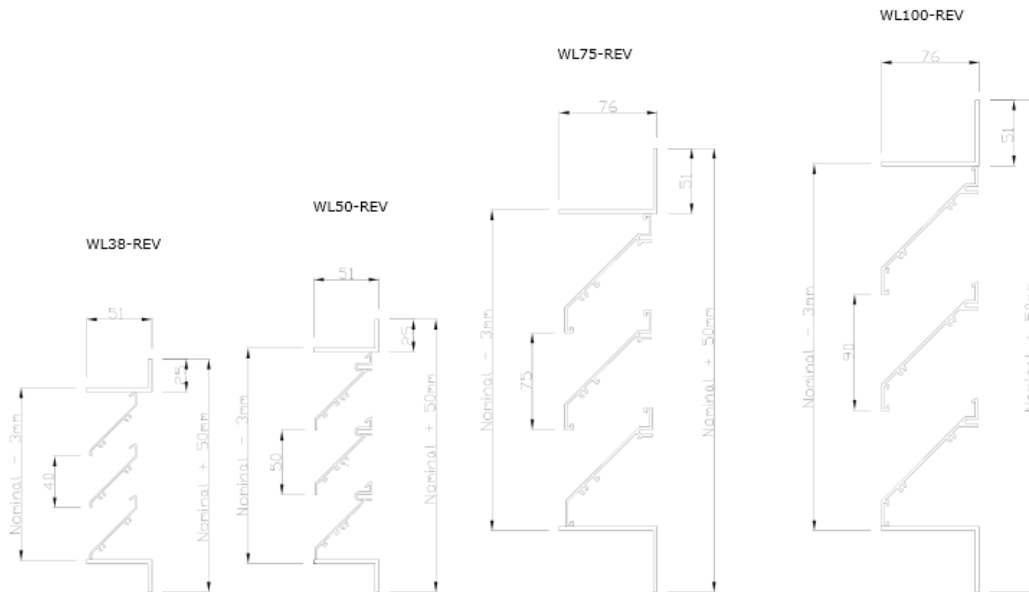




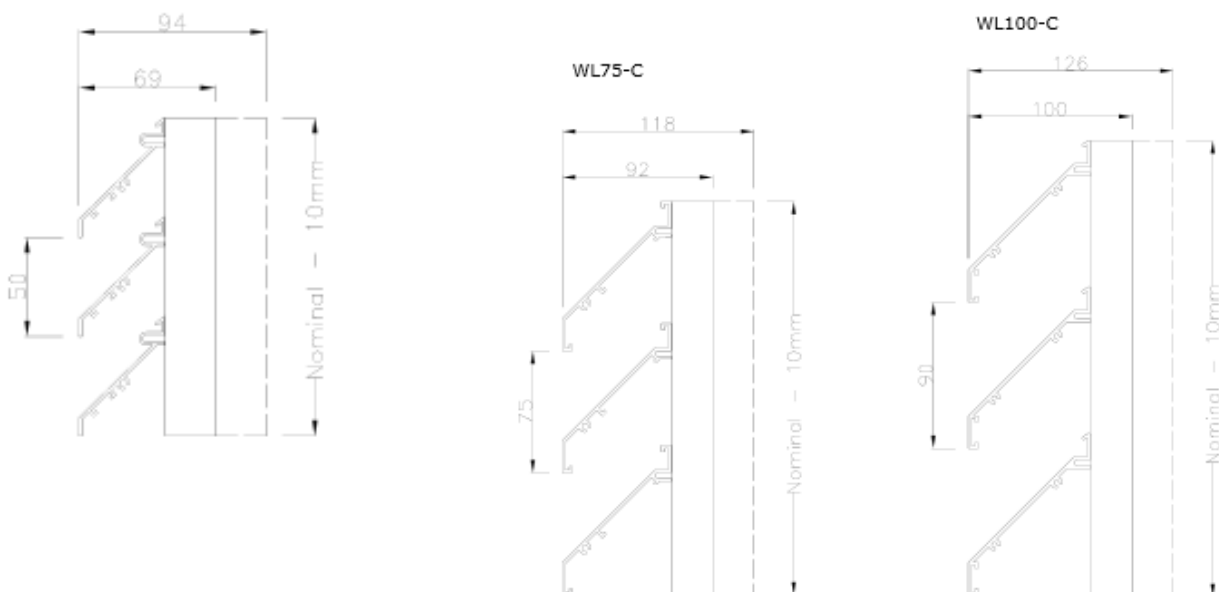
T: 01494 897700
 W: www.monodraught.com
 E: air-precision@monodraught.com
 Halifax House, Cressex Business Park
 High Wycombe HP12 3SE

STANDARD WEATHER LOUVRES

» REV: Reversed



» C: Concealed (not available with WL38). Blades are only supported by rear mullions. Hatched areas denote the larger supports which would be used on units equal to or over 1500 mm high.





T: 01494 897700

W: www.monodraught.comE: air-precision@monodraught.comHalifax House, Cressex Business Park
High Wycombe HP12 3SE

STANDARD WEATHER LOUVRES

• Large Units:

Large louvres may need to be produced in sections. The number of sections can be stated in your ordering code, or will be decided by Monodraught and stated on your order acknowledgement.

» Side-by-side sections:

- **WL38's:** Non continuous appearance. Blades will be edged with a flat aluminium profile to be butted up to its adjacent profile.
- **WL50's, WL75's and WL100's:** Continuous appearance with concealed bolting points for joining adjacent sections. This will increase louvre depth by approximately 25 mm.

» Vertically stacked sections:

- All series: Units will be manufactured in sections of equal height, to be stacked together upon installation. Joining strips can be supplied if required to ensure alignment.



WL75 IN SIDE-BY-SIDE SECTIONS SHOWING CONCEALED ANGLE WITH BOLTING POINTS

• Additional Options:

- #### » Face mounted drip cill – DC:
- By fitting an extended cill beneath the bottom blade, any water caught by the louvre is ejected away from the wall, instead of the bottom section of frame. This can help prevent streak marks where water has run down a wall over time. Available with flanged (shown), recessed and reversed flange louvres.

Please note: Recessed and reversed flange louvres will have a folded sheet metal drip cill with a profile appropriate to the selected blade type.



» DT: Rear mounted drip tray

Drip trays can be fitted to any series weather louvre except concealed, however on WL50's and WL75's they are required if Class C rain rejection performance is needed.

Drip trays act to catch any water which penetrates through the louvre.

Trays protrude 65 mm past the rear of the frame.

