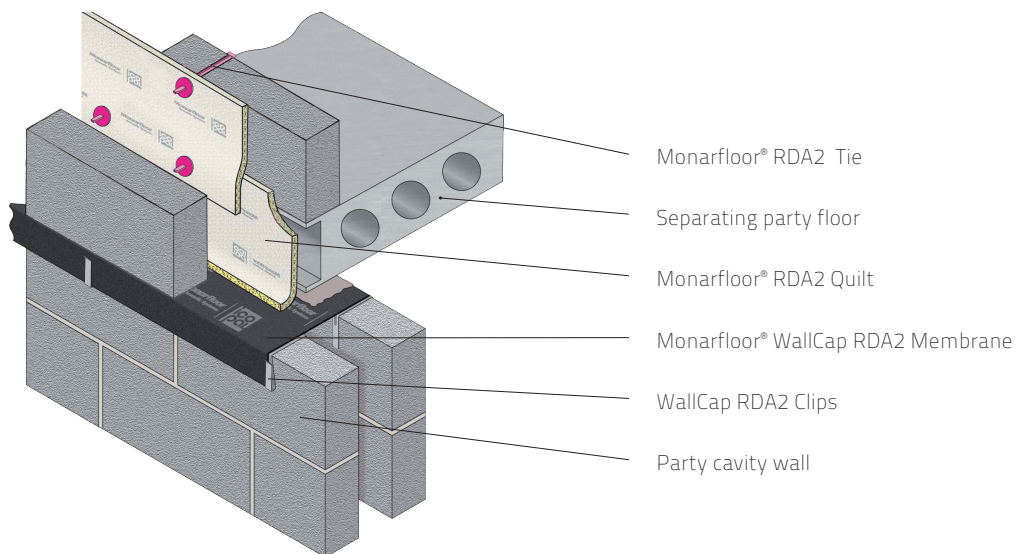


# Monarfloor®

## Wall Cap RDA2 System Acoustic Systems

Acoustic isolation and energy insulating system for separating party cavity walls within multirise developments. Monarfloor® Wall Cap RDA2 isolates the load-bearing leaves from the separating floor, reducing the acoustic flanking sound transmission within the structure. Monarfloor® Wall Cap RDA2 also ensures the integrity of acoustic treatments for party walls and floors. Whilst providing 'effective edge sealing' as required in approved document L1A of the building regulations (2010), SAP 2012 & Section 6 of the Scottish Building Standards. Monarfloor® Wall Cap RDA2 can be used in typical masonry, Timber, steel and concrete forms of construction.



### Features and Benefits

- Isolates the separating floor from the load bearing party wall.
- Reduces the flanking sound transmission energy within the structure.
- Superior acoustic isolation performance.
- Can be used as an isolator / innovative flanking detail with any acoustic flooring treatment.
- Easily installed within current standard wall constructions.
- Significantly improves the acoustic isolation of the building when used in conjunction with other Monarfloor® acoustic systems for party walls and floors.
- Ensures the robustness of other acoustic systems for party walls and party floors.
- Demonstrates a significant cost saving and flexibility in the design and build of the building.
- Surpasses performance requirements of Approved Document E of the Building Regulations (England & Wales) & Section 5 of the Scottish building Standard.
- Can be used to improve the acoustic performance and gain credits towards The Code for Sustainable Homes.
- Provides 'effective edge sealing' as required to meet Approved Document L of the building regulations (2010) for party cavity walls, SAP (2012) & Section 5 of the Scottish Building Standards.
- Specified within the Robust Details Handbook (Appendix A2) as of October 2011.

### System Kit

Monarfloor® Wall Cap RDA2 is available as a system kit comprising 1 roll of Wall Cap RDA2 membrane, 40 Wall Cap clips 2 rolls of RDA2 quilt and 40 RDA2 ties.

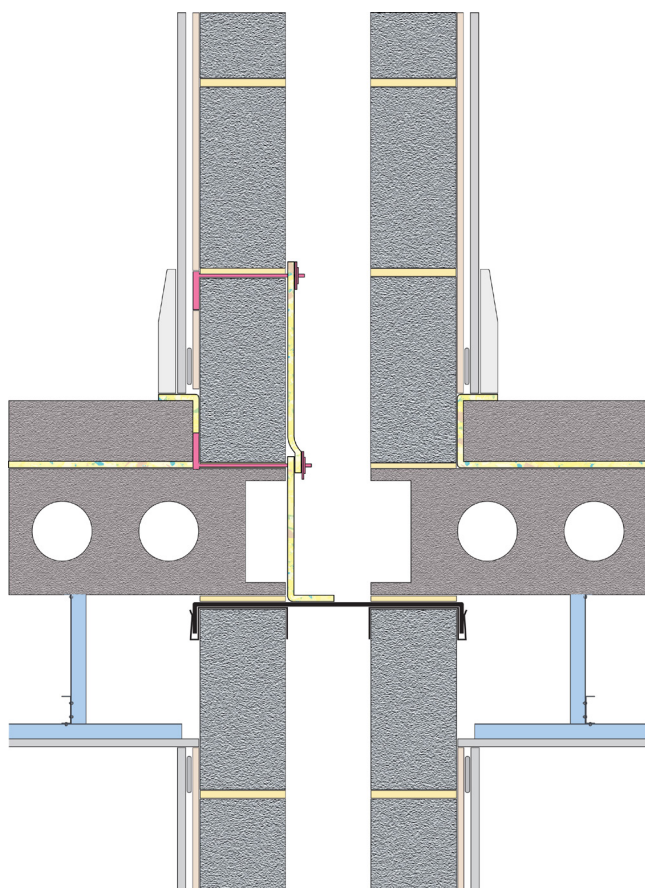
### Product Data

<b>Composition</b>	Wall Cap RDA2 Membrane – Bitumen composite with acoustically rated fillers and fire retardant. Wall Cap RDA2 Clips – Structural grade galvanised steel. RDA2 Quilt - Reconstituted polyetherpolyurethane.
<b>Sizes</b>	Wall Cap RDA2 is supplied as a system kit and will work with all common UK cavity widths. The kit is supplied to suffice 8 linear meters of party wall.
<b>Kit</b>	Weight 23kg (nominal)

**Installation at a glance (masonry)**

- Build the load-bearing party walls to the desired height.
- Locate Wall Cap RDA2 clips equally at approximately 600mm centres on both leaves along the length of the party cavity wall.
- Roll Wall Cap RDA2 membrane over the full length of the prepared cavity wall, return the overhangs down the face of the masonry blocks and clip into the Wall Cap RDA2 clips.
- For jointing, butt the Wall Cap RDA2 membrane tight and locate further Wall Cap RDA2 clips at these junctions.
- Once the separating floor is fully installed, proceed to build the party and flanking walls.
- All wall / floor junctions must be isolated in the same manner as the build continues upwards.
- Wall Cap RDA2 membranes can be overlapped where necessary.
- Continue to build the cavity wall.
- Bed the first Tie in position within the mortar bed, close to start of the wall.
- Continue bedding the Ties in at approx every 450mm centres.
- Roll out the first layer of RDA2 Quilt in the cavity between the two floor planks ensuring that the bottom edge of the Quilt returns across the cavity and that the top edge of the Quilt covers the first block joint.
- Fix the Quilt in position by pushing it onto the ties, ensuring it penetrates the Quilt.
- Build the second course between the masonry leaves by repeating the above process.
- Lock the Ties in position by pushing the Tie Locking Caps over the open ends, cut excess Tie flush with the Locking Cap.
- Once Quilt is fully installed complete the build of the party wall.

For optimum acoustic isolation, the party cavity wall should have Monarfloor® Wall Cap RDA2 built in at every storey and flanking walls isolated from the precast floor slab with Monarfloor® Wall Cap 200 & Isolation Strips.

**Related Products**

- **Monarfloor® Wall Cap 200 System** – acoustic isolation system for separating flanking walls within multi-rise developments.
- **Monarfloor® Bridgestop® System** – acoustic isolation system for party walls on raft foundations or continual slab.
- **Monarfloor® Tranquilt® System** – lightweight acoustics isolation system for robust under screeds.

For full details refer to individual Monarfloor® Product Data Sheets.

**Technical Support**

Monarfloor® Acoustic Systems offers FREE technical advice and assistance on all aspects of acoustic systems. We can also undertake site visits to provide contractors with advice and assistance at every stage of a project from concept to completion.

**For further information call 0161 865 4444 or visit [www.monarfloor.co.uk](http://www.monarfloor.co.uk)**

NOTE: This information is given in good faith being based on the latest knowledge known to Monarfloor® Acoustic Systems. Whilst every effort has been made to ensure the contents of the publication are current while going to press, customers are advised that products, techniques and Codes of Practice are under constant review and liable to change without notice. Up to date information is available from our Technical Services Department on request. Responsibility cannot be accepted for the application of products, and no claims can be considered, where the manufacturer's instructions have not been followed. The user should not assume, based on information provided in this sheet, that the product is suitable for any abnormal use. All products are sold subject to our standard terms and conditions of sale, a copy of which is available on request.