

# THERMOWOOD®

AN OVERVIEW OF SOLUTIONS  
FOR TIMBER CLADDING AND  
RAIN SCREENS

# AN INTRODUCTION TO METSÄ WOOD THERMOWOOD®

Metsä Wood ThermoWood-D is produced by heat treating Finnish grown Pine and Spruce to temperatures in excess of 200 degrees Centigrade. During heat treatment, chemical and structural changes occur within the timber which alter and improve some of its basic characteristics.

The resulting product is an altogether more durable and stable timber, an ideal material for use in exposed areas such as external wall claddings.



HABITAT FOR HUMANITY, SOUTHWARK

## THE BENEFITS OF METSÄ WOOD THERMOWOOD®

### **DURABILITY**

The improved durability of ThermoWood-D makes it an excellent material to use in the production of timber claddings and rain screens. The heat treatment process enables the use of Finnish Pine and Spruce in areas requiring a desired service life of up to 30 years without the need for a chemical preservative.

### **ENVIRONMENT**

The timber used to produce ThermoWood-D is grown in our own Finnish forests which are fully certified under the Finnish Forestry Certification System and Pan European Forestry Certification. As such you can be sure ThermoWood-D is sourced from well managed and sustainable forests. The heat treatment process requires no chemical additives. The improved performance is achieved simply by the controlled application of heat and steam.

### **STABILITY**

ThermoWood-D is more stable than untreated softwood. The changes that occur within the timber during heat treatment make it less able to absorb or lose moisture. This restriction of moisture movement limits any potential for swelling, shrinkage or distortion of ThermoWood-D cladding boards.

### **MAINTENANCE**

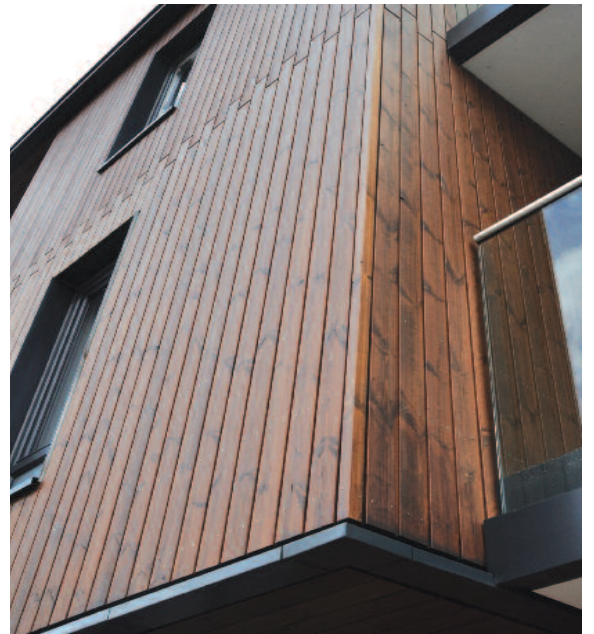
Heat treatment removes resin from timber. As a result there is no resin leakage or 'bleed' through the surface coatings. The combined effect of this together with the improved stability can lead to a lower maintenance requirement.

# 30 YEAR SERVICE LIFE

Uncoated ThermoWood-D exterior cladding can provide a 30-year desired service life. This calculation is based on a number of conditions including: the quality of the workmanship at the time of installation and the exposure of cladding to the weather including location, elevation and design. If coated, over the life of the product, ThermoWood-D will have a 60-year desired service life, providing the coating is maintained in-line with the coating manufacturer recommendations over the service life of the product\*.

# VISUAL QUALITY

The colour of ThermoWood-D is affected by the treatment temperature and time. The higher the temperature the darker the appearance. As with all softwoods, variances occur and are due to varying densities. When ThermoWood-D is exposed to UV light, it will lose its colour and turn silver grey unless protected by a pigmented surface protection.



\*PLEASE CONTACT US FOR FURTHER INFORMATION.

## BIM (BUILDING INFORMATION MODELLING)

Metsä Wood ThermoWood-D profiles are available to download as BIM components from our website [www.metsawood.co.uk/BIM](http://www.metsawood.co.uk/BIM) and [bimstore.co.uk](http://bimstore.co.uk).

For further information, please contact our technical team via [bimuk@metsagroup.com](mailto:bimuk@metsagroup.com).



# STANDARD THERMOWOOD-D PINE PRODUCT PROFILES

T&G SHIPLAP



CODE	FINISHED (MM)*	FINISH
244288	21 x 118	Embossed
247059	21 x 142	Embossed

\*Finished (mm) quoted are approximate.

PMV CLADDING



CODE	FINISHED (MM)*	FINISH
244289	21 x 118	Embossed

\*Finished (mm) quoted are approximate.

BATTENING/CORNERING



CODE	FINISHED (MM)*	FINISH
244949	20 x 92	4 sides smooth

\*Finished (mm) quoted are approximate.

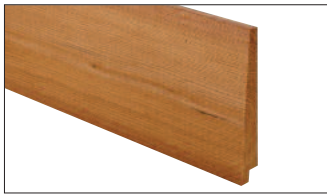
CHANNEL CLADDING



CODE	FINISHED (MM)*	FINISH
244290	21 x 118	Embossed

\*Finished (mm) quoted are approximate.

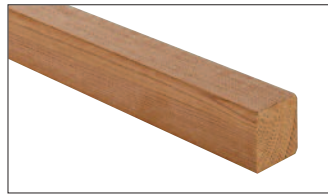
TAPERED CLADDING



CODE	FINISHED (MM)*	FINISH
244291	21 x 142	Embossed

\*Finished (mm) quoted are approximate.

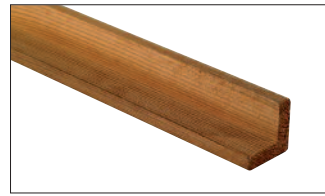
BATTENING/CORNERING



CODE	FINISHED (MM)*	FINISH
244948	42 x 42	4 sides smooth

\*Finished (mm) quoted are approximate.

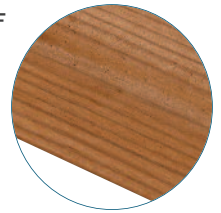
CORNER TRIM L SHAPED SECTION



CODE	FINISHED (MM)*	FINISH
244975	42 x 42	Smooth

\*Finished (mm) quoted are approximate.

DETAILED EXAMPLE OF EMBOSSED FINISH



THERMOWOOD 'D' PINE IS AVAILABLE IN A VARIETY OF FINISHED PROFILES OR AS TREATED SAWN MATERIAL IN SIZES UP TO A MAXIMUM OF 50 X 150mm.

# SPECIAL ORDER PROFILES

DUAL SHADOW



CODE	FINISHED (MM)*	FINISH
156287	26 x 142	Embossed

\*Finished (mm) quoted are approximate.

PMV CLADDING



CODE	FINISHED (MM)*	FINISH
56285	21 x 192	Embossed

\*Finished (mm) quoted are approximate.

TAPERED CLADDING



CODE	FINISHED (MM)*	FINISH
156286	20 x 192	Sawn

\*Finished (mm) quoted are approximate.

DUAL CHAMFER



CODE	FINISHED (MM)*	FINISH
156289	26 x 68	Embossed/Smooth

\*Finished (mm) quoted are approximate.

DUAL CHAMFER



CODE	FINISHED (MM)*	FINISH
155102	42 x 42	Smooth

\*Finished (mm) quoted are approximate.

FOR FURTHER INFORMATION VISIT [metsawood.co.uk/thermowood-cladding](http://metsawood.co.uk/thermowood-cladding)



For further information and technical assistance please email: [uk@metsagroup.com](mailto:uk@metsagroup.com) or call 0800 00 44 44

# INSTALLATION AND GENERAL DESIGN

For general design and installation information please view our technical brochure online at [metsawood.co.uk/thermowood-cladding](http://metsawood.co.uk/thermowood-cladding). You will find helpful information on:

- *General fixing recommendations*
- *Information on typical general layouts for timber frame walls, Leno (CLT) and masonry walls*
- *Corner detail fixing details*
- *Surface treatment and maintenance*

Below are a couple of installation tips but please visit our website for full details.

## RECOMMENDED FIXINGS

It is recommended to use a pneumatic nailer with a facility to adjust the pressure. The nail should penetrate so that the head sits flush with the cladding surface. Typically 2.1mm or 2.5mm is the recommended nail diameter when using a pneumatic nailer and improved nails. The use of improved nails (annular ring shank nails) is recommended, to improve nail holding strength and to be able to use thinner nails and avoid the risk of splitting.

## NAIL TYPES

Stainless steel nails should be used to fix ThermoWood, because plated nails can be damaged during fixing and can deteriorate when exposed to moisture, staining the area around the nail head. A less visible lower gauge nail can be used but lower pull-through strength should be noted, and additional fixings may be required. 'Small head' or 'siding nails' are suitable for ThermoWood but 'round-head' nails offer greater holding power. 'Losthead' pins are not recommended.

FOR FURTHER INFORMATION VISIT  
[metsawood.co.uk/thermowood-cladding](http://metsawood.co.uk/thermowood-cladding)



KALEIDOSCOPE, CAMBRIDGE

## PROJECTS



### SHIPLAP CLADDING

**STEAM MILLS PRIMARY SCHOOL, CINDERFORD**

APEX ARCHITECTURE,  
VINEY HILL



### CHANNEL CLADDING

**KALEIDOSCOPE, CAMBRIDGE**

GRAFIK ARCHITECTURE,  
BILLERICAY



### VERTICAL CHANNEL CLADDING/ HORIZONTAL RAIN SCREEN

**THE OUTLET RETAIL PARK, BANBRIDGE**

MCALISTER ARMSTRONG &  
PARTNERS ARCHITECTS,  
BELFAST



### LAMINATED THERMOWOOD\*

**GILLESPIE PARK, HIGHBURY**

BUILT ENGINEERS,  
LONDON/COWLEY  
TIMBERWORK,  
WADDINGTON

View more projects online at [metsawood.co.uk/thermowood-cladding](http://metsawood.co.uk/thermowood-cladding).

Our ThermoWood® technical brochure is available to view on our website. Visit [metsawood.co.uk/thermowood-cladding](http://metsawood.co.uk/thermowood-cladding) or scan the QR code found inside this brochure.

For further information call our technical team on 0800 00 44 44 or email [uk@metsagroup.com](mailto:uk@metsagroup.com).

Metsä Wood is a wood products company delivering service-oriented solutions developed in collaboration with its customers. Its premium solutions are based on ecological, high quality Nordic wood as a raw material.

Wood is the only building material that is truly renewable, if well managed. Forest certification schemes give assurance that the timber is legal and from sustainable sources. Metsä Wood sources certified timber over uncertified and is an approved Chain of Custody supplier.

MW0190 Jan 14.

The photographs in this brochure are for illustration purposes only.

Metsä Wood reserves the right to change the range without notice.

Every effort has been made to ensure that colours are accurate within the limitations of natural lighting conditions and the four colour printing process.

**METSÄ WOOD**  
Telephone: 0800 00 44 44  
Email: [uk@metsagroup.com](mailto:uk@metsagroup.com)  
[www.metsawood.co.uk](http://www.metsawood.co.uk)

