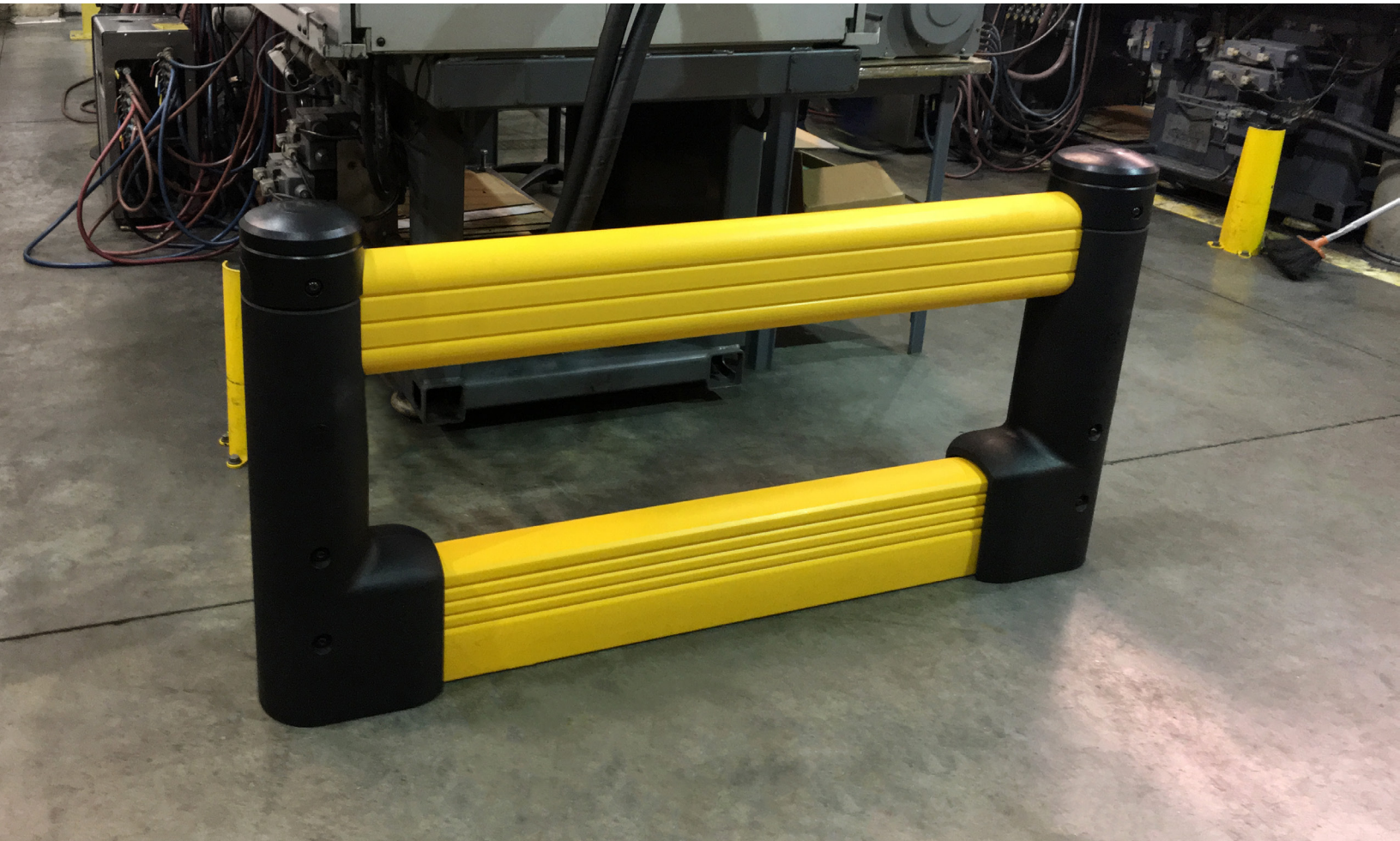


# FlexCore Guard Rail



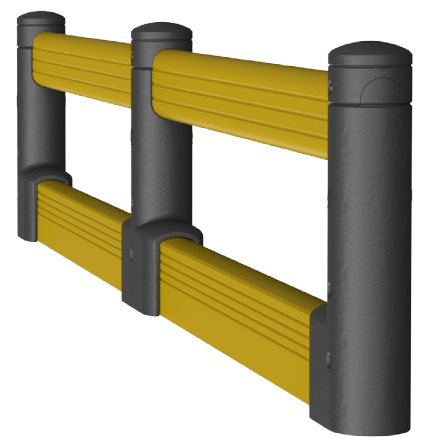
## For when you need that extra level of protection.

Our easily installed Barrier system is designed for areas that need an extra level of protection. Your most important barrier is the one separating your workforce from the forklift careening across your floor. Keep your people safe, and your business protected!

**Zero Maintenance** Eliminate the need for scraping, painting and repainting

**Complete Protection** Ground-level protection

**Modular Design** Hidden hardware

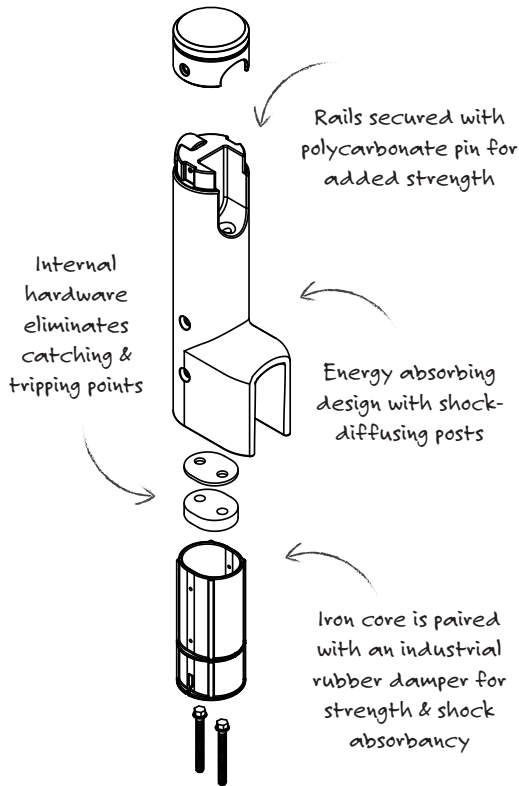


\* Patent Pending

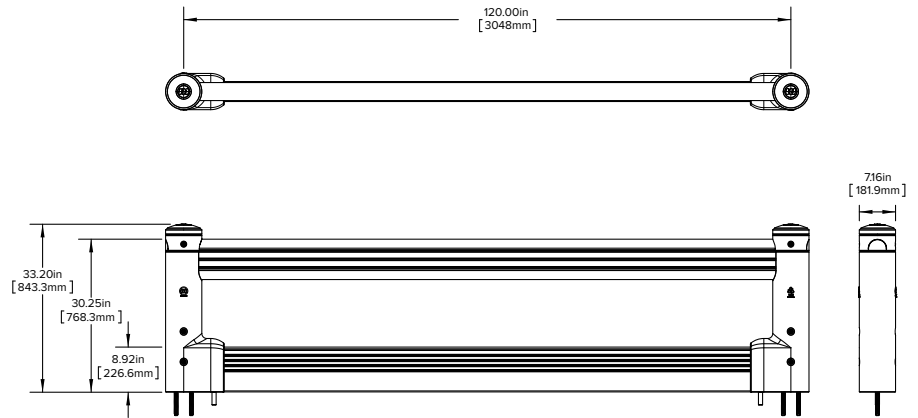
# FlexCore Guard Rail



## How it works:



## Dimensions:



### End Post

GR-K-END-401

Hardware included

### Mid Post

GR-K-MID-401

Hardware included

### 10' Upper Rail

GR-C--RAL-307

Material: Polyolefin Copolymer

### 10' Barrier

GR-C--RAL-307

Material: Polyolefin Copolymer



**McCue Corporation**  
Peabody, MA 01960, USA  
+1 (800) 800 8503  
customer@McCue.com

**McCue UK & Europe**  
Milton Keynes, United Kingdom  
+44 (0)1908 365 511  
uksales@McCue.com

**McCue Asia**  
迈客(厦门)有限公司  
Xiamen, Fujian, China  
+86-592-2200790

[mccue.com](http://mccue.com)

