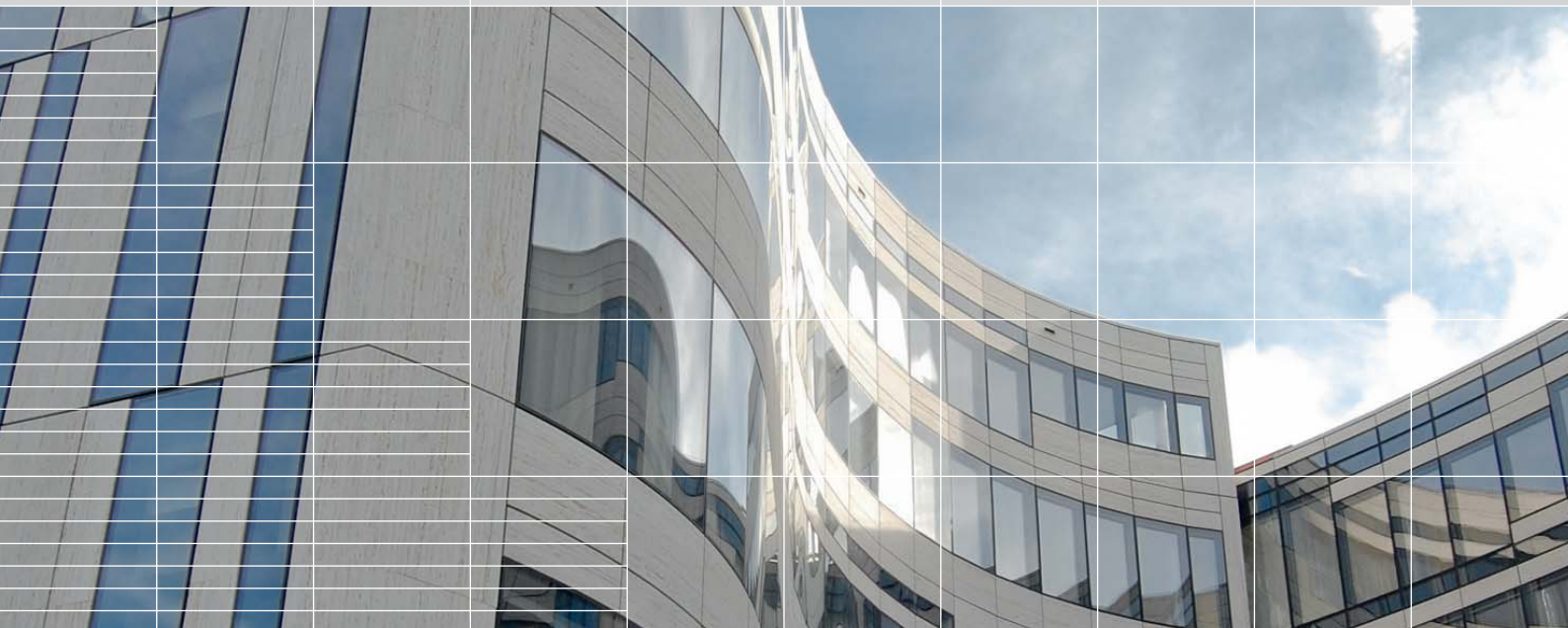


FRANK | Product List

valid as of 1 April 2014



Injection material





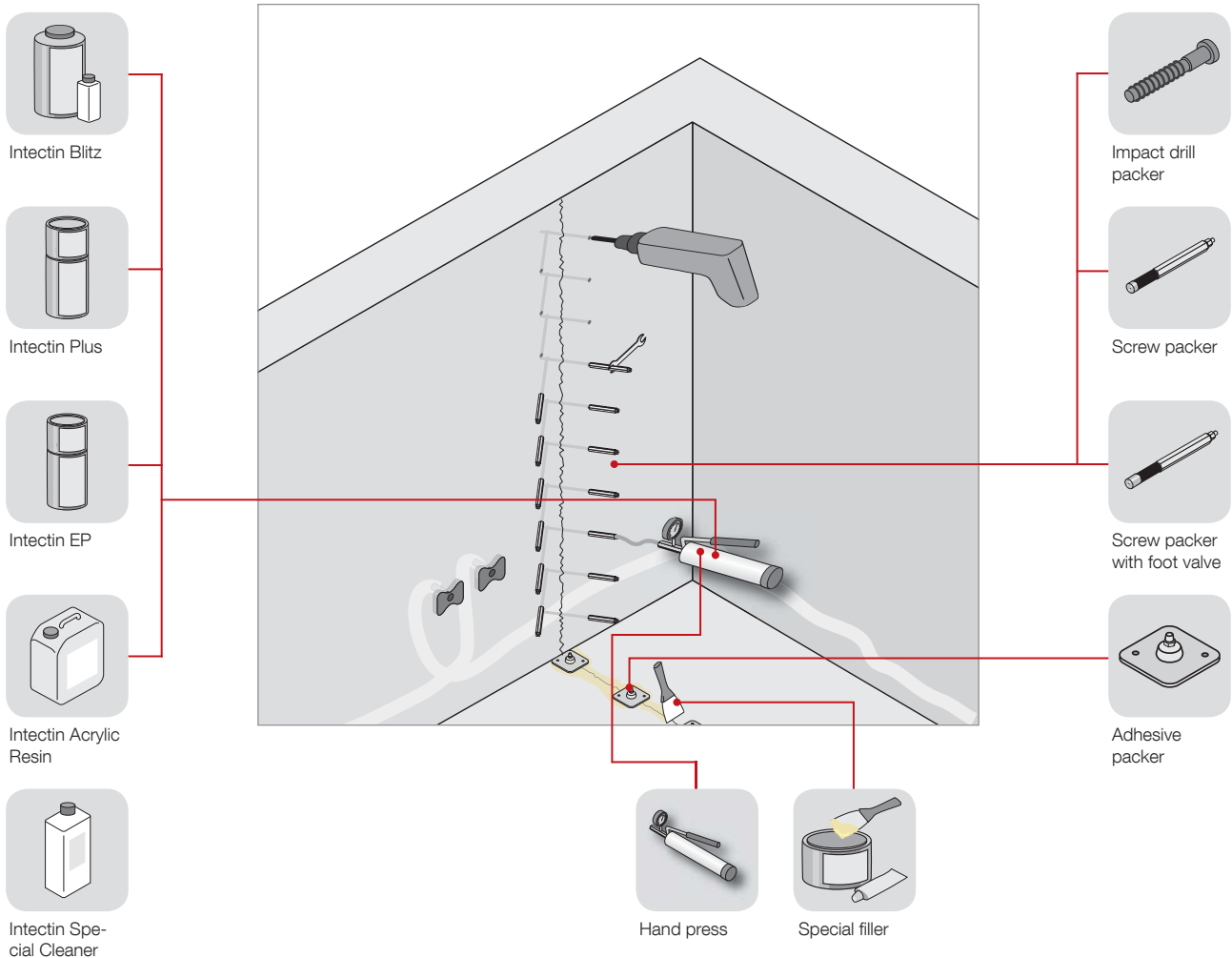
Intec® injection materials

After curing of the concrete, the injection hoses are filled with suitable injection material (resins). Due to the high pressure, the filling material will be pressed through the openings of the hoses into the developed “voids” and closes any pos-

sible water penetration paths into the high-quality building. Our extensive range of injection resins offers an appropriate solution for every sealing requirement. The supply range is rounded off by further appliances for crack injection.

description	Possible injection material					Adhesive packer		Test General approval
	PUR	EP	Acrylic	Cement suspension	Cement paste	one	multiple	
Intec Standard	+	+	+	-	-	+	-	+
Intec Premium	+	+	+	-	-	+	+	+
Intec Cem N	+	+	+	+	+	+	+	+

- ⊕ suitable
- ⊖ not suited




Intec® injection materials

Designation	Art. no.	Weight kg/pce.
Intectin Plus PUR resin according to DIN-EN 1504-5 with CE mark and drinking water suitability test according to KTW recommendation. Suitable for hose pressing and crack injection. The resin is low-viscous and hardens elastically with extended dropping time (corresponding to 100 min).	IPOP01	1.00
Intectin EP, two-component contact epoxy resin for force-fit crack sealing or also for force-fit/filling injection hose, suitable for dry and damp surfaces	IPIH01	1.00
	IPIH05	5.00
	IPIH10	10.00
Intectin Blitz PUR resin (incl. accelerator) – foams in contact with water and stops the water flow, accelerator content: approx. 10%	IPUHB01	1.00
	IPUHB05	5.00
Intectin Acrylic Resin, low-viscosity two-component acrylic injection resin, approved for drinking water applications to KTW recommendations. Water-soluble before hardening - swells on contact with water after hardening. Particularly suitable for reusable injection hoses. Working temperature down to 0°C. Anti-corrosive due to active corrosion protection.	IPAH10	10.00

Designation	Art. no.	Weight kg/pce.
Accelerator for Intectin Plus and Intectin Blitz	IPUHB001	0.10

Designation	Art. no.	Pack size Litre
Intectin Special Cleaner, suitable for PUR and EP resins	IPUSRN01	1

Metal disk packer for crack injection

	Designation	Art. no.
	Metal disk packer incl. conical-headed nipple with an internal thread M6. For glueing and tamping we recommend the FRANK special filler in 1 kg packs.	IKPACK




Steel nails for crack injection

Designation	Art. no.	Pack size
Steel nails 2 x 50 mm, for the use in connection with the disk packer, to secure crack access	IKPACKN	100 pcs.

Special filler for crack injection

Special filler standard colour caramel and grey. Quick setting filler for fixing metal disk packers and for crack injection. For further information, please refer to page 70.

Crack injection materials

	Designation	Art. no.	Connector diameter mm	Drill diameter mm	Connector length mm	Pack size piece
	Impact drill packer for resin injection, plastic lamellar packer, incl. conical-headed nipple	IBSP10	10	10	65	100
	Screw packer. All packers come with a conical-headed nipple	ISP08075	8	8	75	100
		ISP10100	10	10	100	100
		ISP13075	13	14	75	100
		ISP13100	13	14	100	100
	Screw packer with foot valve incl. conical-headed nipple for the 1-day building site	ISP10100FV	10	10	100	100
		ISP13100FV	13	14	100	100



Max Frank GmbH & Co. KG

Technologies for the construction industry

Mitterweg 1
94339 Leiblfling
Germany

Phone +49 9427 189-117
Fax +49 9427 1588

info@maxfrank.com
www.maxfrank.com