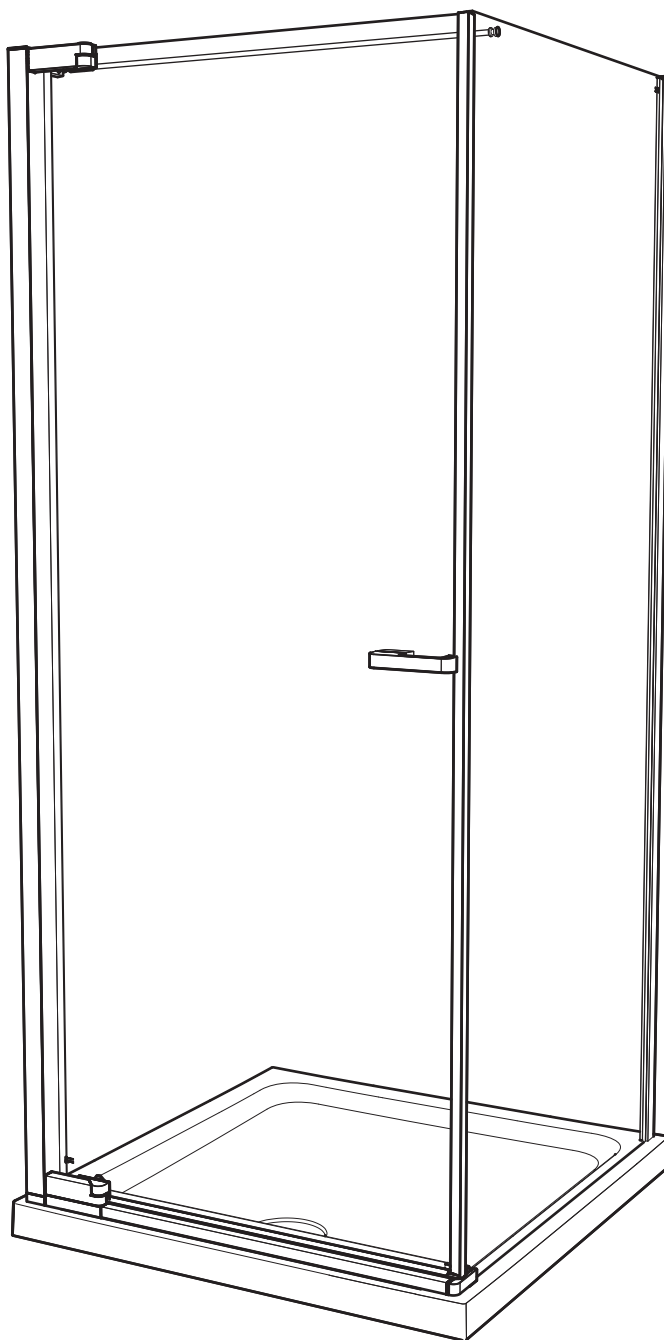


matki | SHOWERING

NEW RADIANCE PIVOT DOOR AND SIDE PANEL CORNER NRPC700,760,800,900,9076,9080

INSTALLATION

PARTS LIST



MATKI PLC, CHURCHWARD ROAD, YATE, BRISTOL, BS37 5PL
TELEPHONE:01454 328816 (AFTER SALES) FAX:01454 328821 EMAIL: techsupport@matki.co.uk

IMPORTANT

Before disposing of carton and/or commencing assembly, please check all the parts to ascertain that none are missing and they are all undamaged. No claim for missing/damaged parts will be accepted once the packing carton has been disposed of and/or assembly has commenced.

In case of query contact your Stockist with details of model number and details of serial number.

PREPARATION

Please read complete installation instructions before fitting. We recommend a **drainage test** is carried out before the tray is tiled in. **Ensure top of tray is level**, tray should be let into wall with tiling lip face flush with the wall to allow tiling to overlap tiling lip. **The assembly should be installed onto waterproof wall covering and installed after the Tray and wall coverings are in place. Ensure Walls are plumb for upright.**

Carefully remove assembly from carton, do not place glass on hard floor or expose edges to impact.

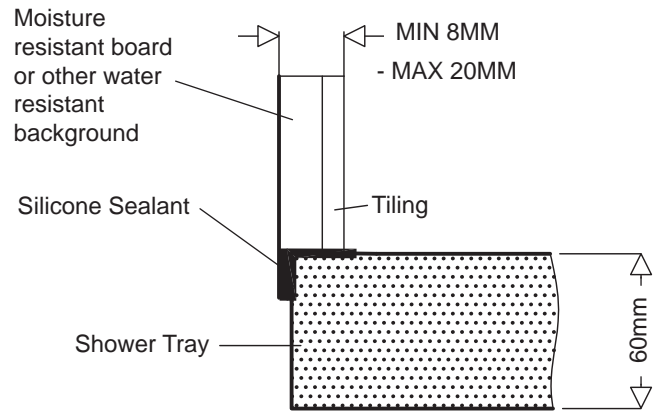
Ensure top of tray is level. Seal between tray and tiles. Remove any excess sealant from the area/joint between the tray and tiles where the Wall Mount will be fitted this will ensure the Wall Mount fits correctly to the wall and tray.

CAUTION: TEMPERED GLASS CANNOT BE CUT, POLISHED METAL AND CHROME CAN BE SCRATCHED.

TOOLS REQUIRED

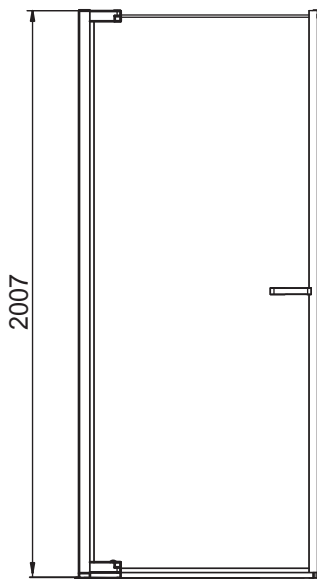
Masonry Drill bit 6mm, Tape Measure, Screw Drivers, Safety Glasses, Electric Drill, Level, Pencil, Adjustable Spanners.

TYPICAL INSTALLATION OF SHOWER TRAY

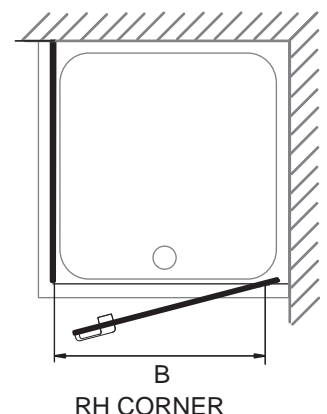
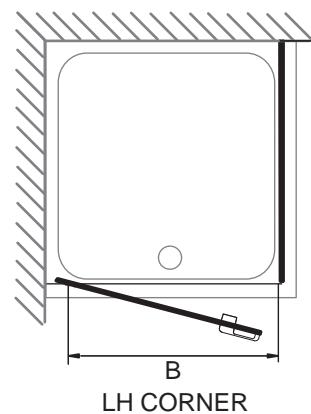
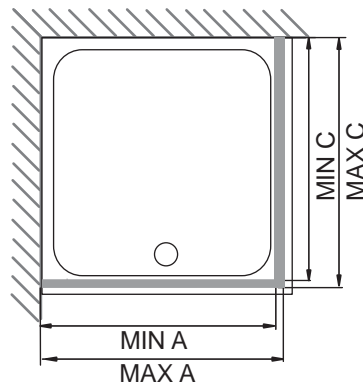


ENSURE TOP OF SHOWER TRAY IS LEVEL

DIMENSIONS

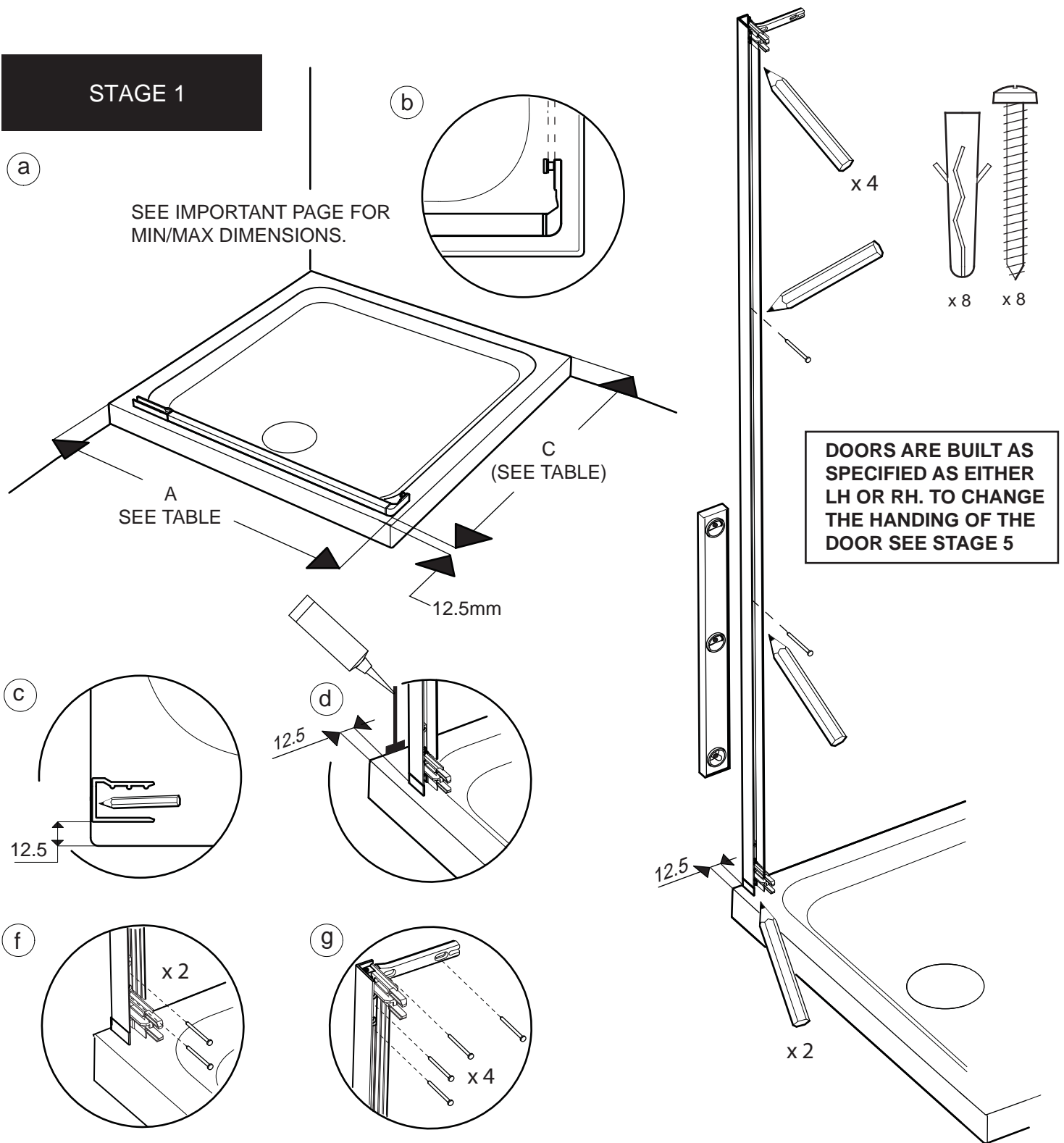


Model	A	B	C	RECOMMENDED TRAY MODEL
NRPC700	661-682	500	667-681	SN700
NRPC760	721-742	560	727-741	SN760
NRPC800	761-782	600	767-781	SN800
NRPC900	861-882	700	867-881	SN900
NRPC9076	861-882	700	727-741	SN9076
NRPC9080	861-882	700	767-781	SN9080



THE FINISHED TRAY THRESHOLD SHOULD BE BETWEEN THE MINIMUM AND MAXIMUM DIMENSION FOR THE MODEL CHOSEN (SEE DIMENSIONS ABOVE)

STAGE 1

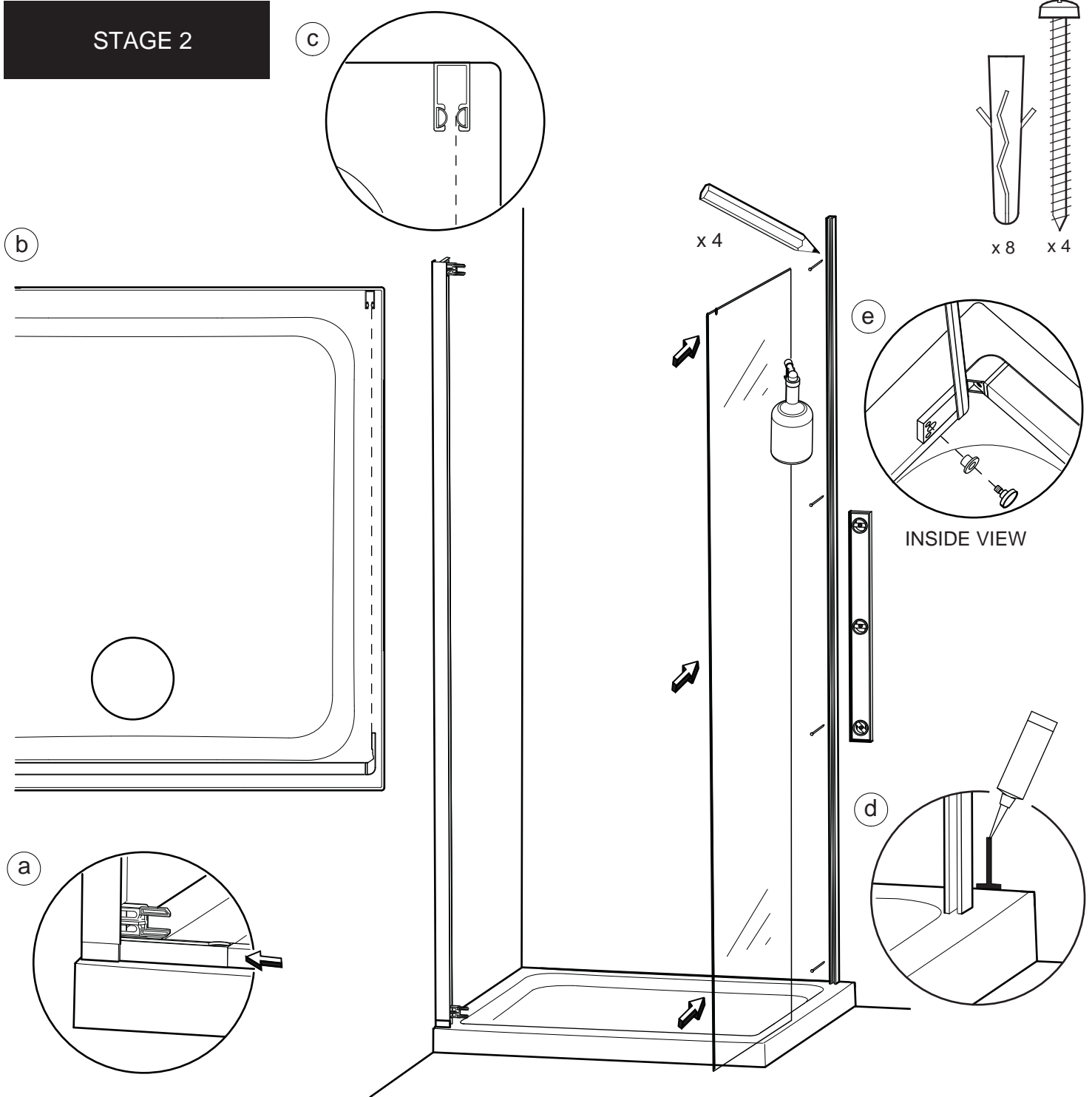


This Stage is describing the use of the Tray threshold as a guide to the max/min product dimensions and the fitting of the Hinge Panel Wall mount.

Place the tray threshold assembly onto the tray 12.5mm horizontally away from the front face of the tray (1a) Position the inside of the L shaped end of the threshold (1b) as close to the inside edge of the tray as possible ensuring dimensions A + B are within the maximum and minimum specified dimensions in the table on the opposite page.

Place the Pivot Wall mount onto the tray. Position the Wall mount on to the Wall 12.5mm away from the front edge of the tray (1c/d). Note: Front face of Wall mount should be inline with front face of threshold. Plumb the Wall mount for upright and mark the 8 x fixing holes in the centre of the slots in the back face of the Wall mount and Wall bracket assemblies (1c,f,g). Drill the fixing holes in the wall and insert the Wall plugs. Clean the area. Apply Silicon sealant to the area behind the Wall mount between the tray and the tiles and 100mm up the wall (1d). Fit the Wall mount with the 8 x No.8 x 32mm screws (Kit of parts) (1f,g).

STAGE 2



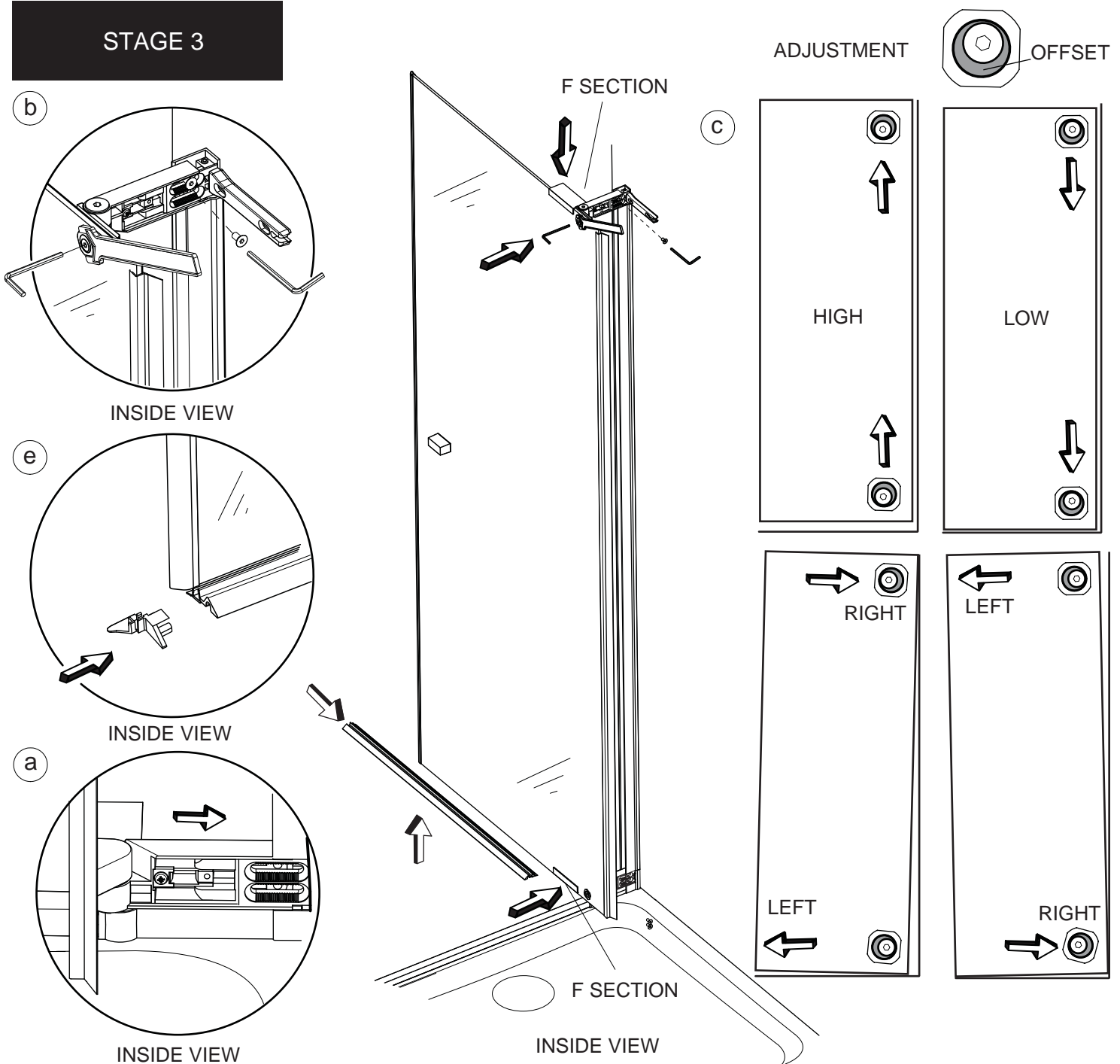
This Stage is describing the fitting of the Tray threshold, Corner wall mount and Corner panel.

Slide the Threshold assembly into the Lower pivot bracket (2a) Place the Corner panel Wall mount onto the wall and align the Inner face of the seal in the Corner panel wall mount (as shown by the dashed line, 2c) with the inside face of the L shaped end of the Threshold assembly (2b). Plumb the Corner panel wall mount for upright, mark the centre of the adjustment slots in the back face. Apply Silicon sealant to the area behind the Wall mount between the tray and the tiles and 100mm up the wall (2d). Drill and fix in position using Wall plugs and the 4 x No.6 x 40mm Pan Head screws (Kit of parts).

Remove and set aside Threshold assembly. Using a Mist spray or damp cloth moisten the seals in the Corner panel wall mount and moisten the edge of the Corner Panel. Taking care, push the Corner panel firmly into the Corner wall mount.

Refit the Threshold assembly and secure to the Corner panel using the fixings provided (2d). Using a level check that the panel is upright and 90 degrees to the tray. Adjust as needed.

STAGE 3



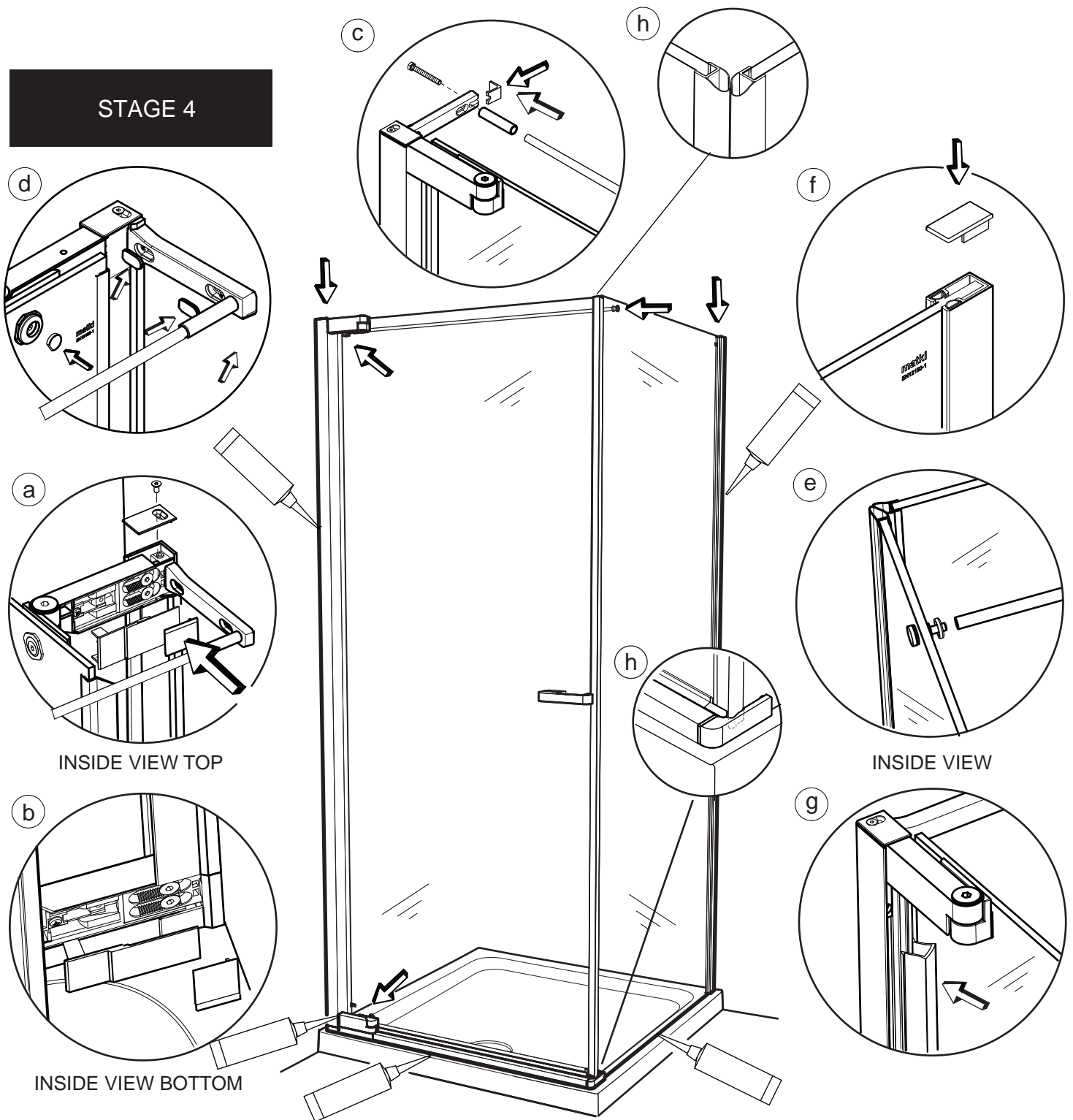
This Stage is describing the fitting of the Door.

Rotate both Hinges 90 degrees to the Door glass and temporarily fix in place using the F Sections provided in the kit of parts. Secure F sections in place using masking tape. Carefully feed the Door hinges onto the Pivot brackets, taking care not to scratch the Threshold (3a). Fix the Door hinges on to the brackets using the 4 x M6 x 12 Countersunk socket screws (3b). Do not overtighten these screws at this stage. Check that the front face of the lower Door hinge aligns with the front face of the Threshold. Adjust as needed. Remove the F sections from the Door hinges and allow the Door to close.

Door adjustment - The door can be adjusted to the Corner panel by adjusting the Hinges in the Pivot brackets. Smaller adjustments to the Door closure position can be made using the 2 x Hinge Cams on the inside of the Door hinges. To make adjustments to the Door closure carefully loosen the fixing screws in the centre of the Hinge Cams (with Allen key provided) so that the Cam nut can be rotated with an adjustable spanner. Do not fully loosen (3b). The door is factory set in the high position and at the mid point of left and right adjustment. To **lower** the door rotate both the top & bottom Cam Nut positions downwards so the Cam offset is downwards. (3c) To adjust the **top** of the door to the **left or right** rotate the Cam Nut so that the cam offset is to the left or right. (3c) To adjust the **bottom** of the door to the **left or right** rotate the Cam Nut so that the Cam offset is to the left or right. (3c) Tighten the Cam fixing screw after adjustment. (Note the Corner Panel will move until Door Brace is fitted).

Push fit the Door seal to the underside of the Door, fitting the cut out side of the Seal to the Hinge side. Push fit the Door seal end cap (3e).

STAGE 4



This Stage is describing the fitting of the Caps, Covers, Door brace and Silicing.

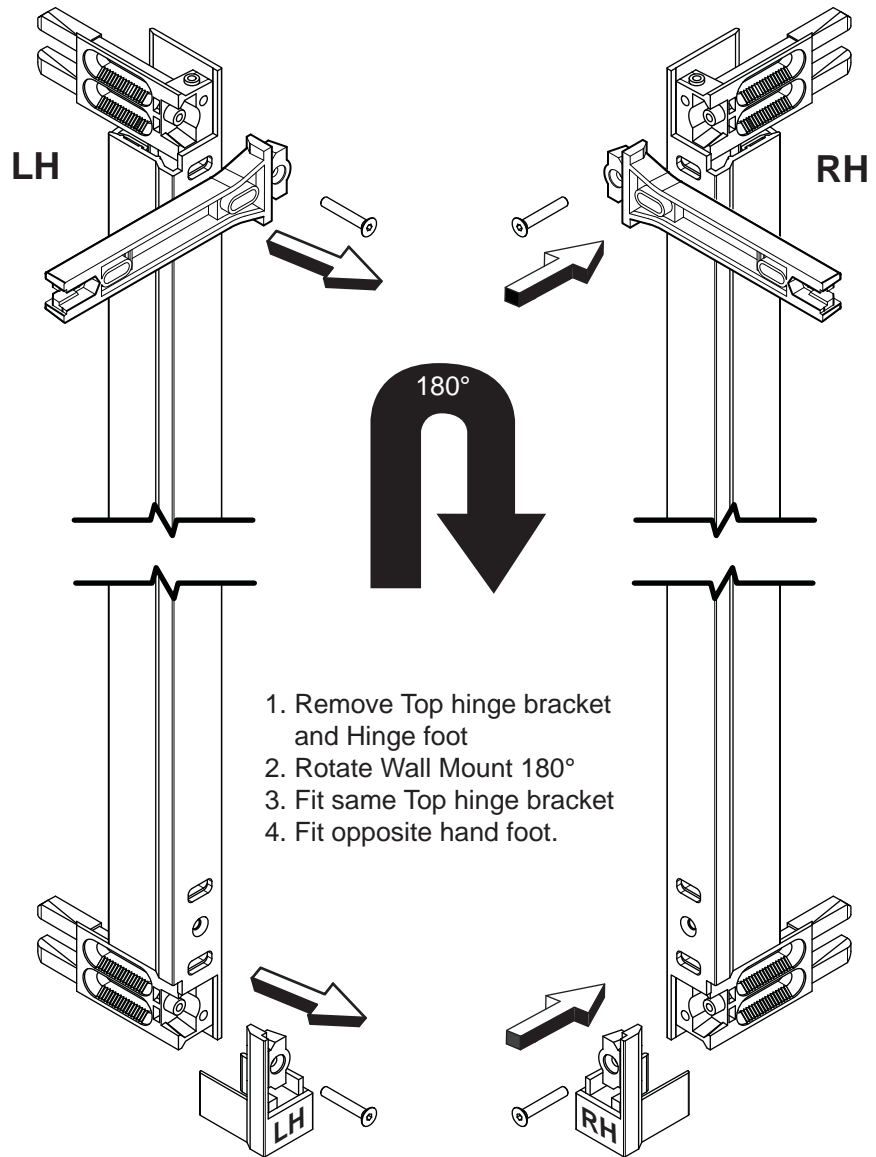
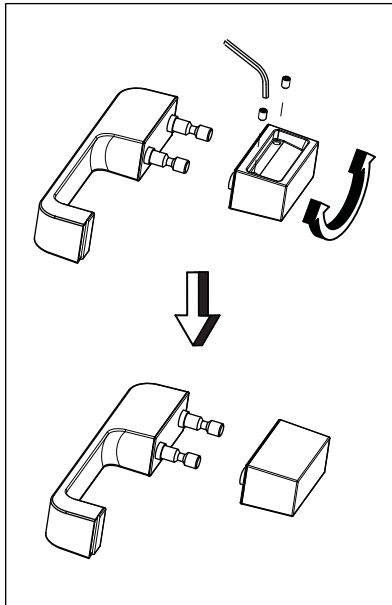
Fit the shorter Magnetic seal to the Door and longer seal to the side panel, the Magnetic seals should be flush at the top (4h) The side panel seal should extend below the Threshold (4h). Adjust the Magnetic seals along the length of the Door and Side panel to provide an effective closure and to prevent the Door opening inwards. This can be done by using the adjustment available in the Wall Mounts, Cams, Hinges and Magnetic seals. **Fully tighten the 4 x M6 Screws when Door alignment has been achieved.** Fit the Door hinge covers (4a,b) Fit the Pivot wall mount top cap using the M4 x 8 Countersunk socket screw (Kit of parts) (4a).

To fit the Door brace, first place the M5 Hex bolt through the back of the Top pivot bracket (4c). Screw the Brace Bar adjustment onto the Bolt trapping the Hinge bracket end cap (Kit of parts) under the adjuster (4c). Screw the Brace Bar onto the Bolt assembly, taking care not to scratch the Brace bar on the Corner panel (4c). Adjust the Brace bar out to meet the Corner panel glass fixings. Ensure the plastic washer is fitted to the inside of the glass, then fit the Glass fixing stud into the top hole of the corner panel (4e). Keeping the Lock nut loose with thread either side, secure the Brace bar onto the glass fixing by screwing the glass fixing and keeping the Brace Bar in position. Tighten the Lock Nut back to the glass, using up any exposed thread by tightening the Glass fixing. Check that the Brace bar is fully fixed in place.

Push fit the Corner panel wall mount top cap (4f). Fit the Screw cover into the Pivot wall mount, fitting the inner leg first (4g). Fit the Hinge bracket screw cover caps and the Hinge cam caps (4d) Apply a thin bead of Silicon along all outside joints. Seal the joint between the Pivot wall mount and lower Pivot bracket assembly. Between the Wall and Wall mounts and between the tray and Threshold/ glass. Masking tape can be used to achieve a tidy edge to the sealant. Remove masking tape immediately and allow the Silicon to cure for 24 hours before using the shower.

STAGE 5

CHANGING THE HAND OF THE NEW RADIANCE PIVOT WALL MOUNT AND DOOR HANDLE



MAINTENANCE

Matki Glass Guard Easy Clean Surface Protection (optional) and General Cleaning Guide

Matki Glass Guard allows water to form minute beads which easily trickle off the surface of the glass. This makes the glass easier to clean - the glass does not need to be cleaned as frequently, but it does require occasional maintenance. As less cleaning is required the use of detergents can be minimised thus helping to protect the environment. The lifespan of the Matki Glass Guard is dependant on the frequency of use of the shower and the degree of water hardness. The combination of alkaline materials and humidity affects glass in an extremely aggressive way. Do not use bleach, alkaline, acid-based or aggressive and abrasive glass cleaners, detergents or household cleaning products on the glass. We recommend that the glass is washed down with clean water and a soft clean cloth or sponge. The special coating is only present on the inside of the glass. Matki Glass Guard is guaranteed for 2 years provided that the guidelines and cleaning instructions are followed. Aluminium and Chrome parts should be cleaned with a mild non scratch household cleaner and a soft cloth or sponge. Do not use acidic-based descaler products or products which are unsuitable for cleaning enamelled surfaces, including abrasive cleaners or cleaners containing bleach or solvents, as the products will effect the anodised framework. Under no circumstances use cleaners with a pH level exceeding 8. Matki does not recommend the use of 'Leave-on' Shower Cleaners on Matki Glass Guard Products.

IMPORTANT

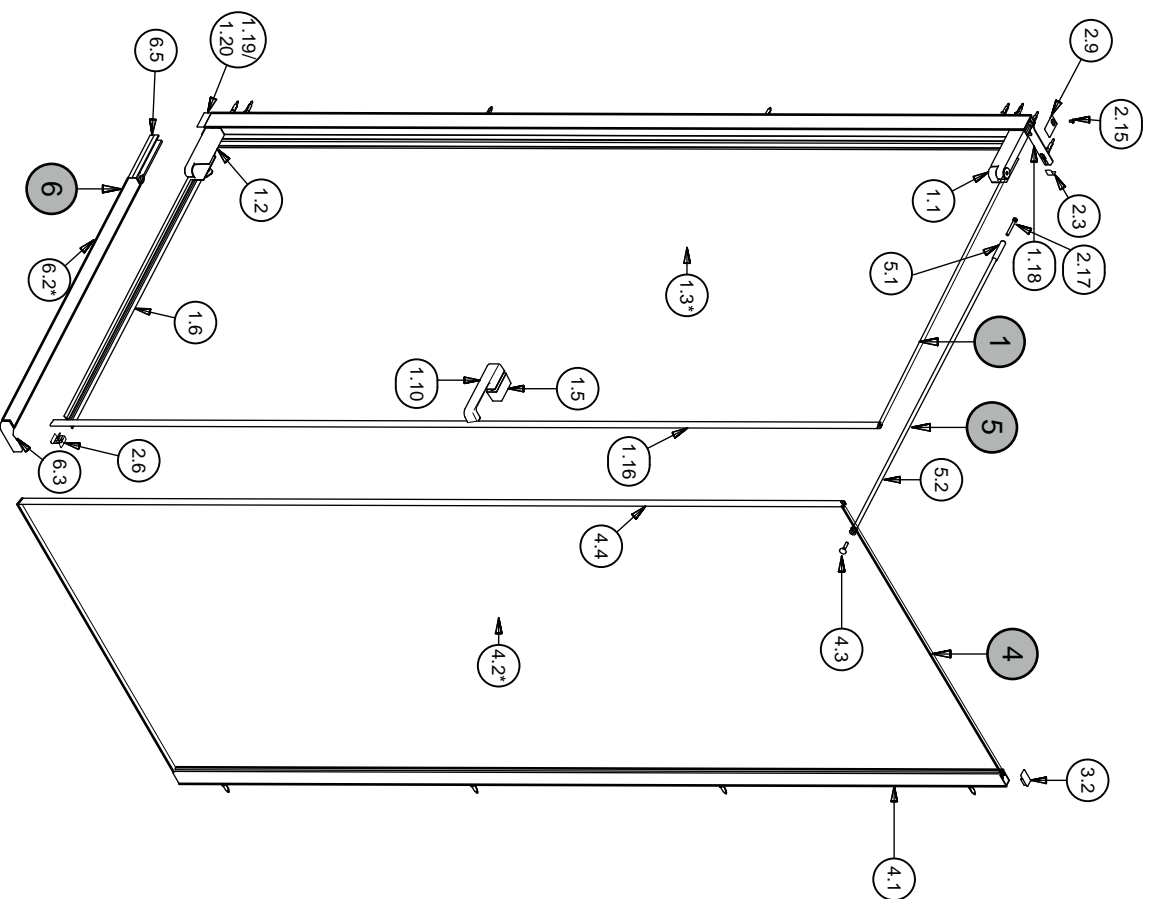
Matki Glass Guard is guaranteed for 2 years. It is essential that the cleaning instructions are followed in order to maintain the hydrophobic properties of the glass coating. In the event of the failure to comply in any way with these instructions, any warranty or guarantee will be null and void.

Flash Bathroom Spray or Cif Bathroom Spray can be used on Matki Products. Various specialist cleaning and glass dressing products are available from Ritec International Ltd Tel. 020 8344 8210 or www.ritec.co.uk. Matki Plc is not connected with Ritec International Ltd in any way and the contact details are supplied for information only. Read manufacturers label before using any cleaning materials



PARTS LIST

We recommend that these instructions are handed to the user with a note of a date of purchase and model details.



6 RADIANCE PIVOT CORNER THRESHOLD

6.1	PANEL CLAMP	5403 AF	1
6.2*	THRESHOLD EXTRUSION NRPC700	5535 A SILVER	1
6.2*	THRESHOLD EXTRUSION NRPC760	5536 A SILVER	1
6.2*	THRESHOLD EXTRUSION NRPC800	5537 A SILVER	1
6.2*	THRESHOLD EXTRUSION NRPC900	5538 A SILVER	1
6.3	INLINE CORNER FOOT CLAMP OUTER	5596 A SILVER	1
6.4	CORNER THRESHOLD CLAMP	5597 A SILVER	1
6.5	HINGE FOOT	5598 A SILVER	1
6.6	BRACE BAR WASHER	5377 BLACK	1

ITEM	DESCRIPTION	PART No.	QTY	LENGTH
------	-------------	----------	-----	--------

1 RADIANCE PIVOT DOOR				
1.1	RADIANCE PIVOT TOP PIVOT SUB-ASSEMBLY		1	
1.2	RADIANCE PIVOT LOWER PIVOT SUB-ASSEMBLY		1	
1.3*	DOOR GLASS MODEL 700	3932 M CLEAR/PLAIN	1	
1.3*	DOOR GLASS MODEL 760	3933 M CLEAR/PLAIN	1	
1.3*	DOOR GLASS MODEL 800	3934 M CLEAR/PLAIN	1	
1.3*	DOOR GLASS MODEL 900	3935 M CLEAR/PLAIN	1	
1.4	CAM GLASS WASHER	5371 BLACK	2	
1.5	INSIDE HANDLE	5375 A SILVER	1	
1.6	THRESHOLD SEAL	2292 CLEAR	1	
1.7	HANDLE PLATE	5383 BLACK	1	
1.8	HANDLE PLATE	5384 BLACK	2	
1.9	DOOR SEAL	2293 CLEAR	1	
1.10	HANDLE OUTER	5368 A SILVER	1	
1.11	SKT SET SCREW	1274 A SILVER	2	M4 x 6
1.12	HANDLE CONNECTOR	5401 AF	2	
1.13	CAM	5370 A SILVER	2	
1.14	WALL MOUNT CLIP IN FOIL	2294 A SILVER	1	
1.15	DOOR WALL MOUNT HINGE SIDE	5496 A SILVER	1	
1.16	DOOR GLASS SEAL	2285 AF	1	
1.17	CSK SKT SCREW	1415 A SILVER	2	M6x16
1.18	HINGE TOP BRACE	5378 A SILVER	1	
1.19	HINGE FOOT LH COLUMN	5381 A SILVER	1	
1.20	HINGE FOOT RH COLUMN	5382 A SILVER	1	
2 RADIANCE PIVOT CORNER DOOR PARTS KIT				
2.1	PAN SELF TAPPING SCREW	1471 A SILVER	8	No. 8 x 32
2.3	CORNER HINGE CAP	5580 A SILVER	1	
2.5	BASE HINGE COVER PLATE	5385 A SILVER	1	
2.6	THRESHOLD SEAL END CAP LH	5515 AF	1	
2.9	HINGE JAMB TOP CAP	5388 A SILVER	1	
2.10	110 THRESHOLD SEAL END CAP RH	5516 AF	1	
2.11	BASE HINGE COVER PLATE	5513 A SILVER	1	
2.13	HINGE PLATE	5366 A SILVER	2	
2.14	WALL PLUG	1818 AF	8	
2.15	CSK SKT SCREW	1499 A SILVER	1	M4x8
2.16	CSK SKT SCREW	1505 A SILVER	2	M4x25
2.17	HEX HEAD SCREW	1288 A SILVER	1	M5x50
2.18	HINGE CAM CAP	5581 A SILVER	2	
2.19	HINGE BRACKET CAP	5579 A SILVER	2	
3 RADIANCE SIDE PANEL PARTS KIT				
3.1	PAN SELF TAPPING SCREW	1470 A SILVER	4	No. 6 x 38
3.2	WALL JAMB CAP	5369 A SILVER	1	
3.3	WALL PLUG	1818 AF	4	
4 RADIANCE PIVOT SIDE PANEL				
4.1	SIDE PANEL WALL JAMB	5503 A SILVER	1	
4.2*	SIDE PANEL MODEL 700	3856 M CLEAR/PLAIN	1	
4.2*	SIDE PANEL MODEL 760	3857 M CLEAR/PLAIN	1	
4.2*	SIDE PANEL MODEL 800	3858 M CLEAR/PLAIN	1	
4.2*	SIDE PANEL MODEL 900	3859 M CLEAR/PLAIN	1	
4.3	PANEL CLAMP	5403 AF	1	
4.4	DOOR SEAL	2285 AF	1	
4.5	MIRAGE / EZ WALL JAMB SEAL	2283 WHITE	2	
5 RADIANCE PIVOT CORNER BRACE				
5.1	BRACE ADJUSTMENT COVER	5380 AF	1	
5.2*	BRACE BAR NRPC700	5394 AF	1	
5.2*	BRACE BAR NRPC760	5396 AF	1	
5.2*	BRACE BAR NRPC800	5397 AF	1	
5.2*	BRACE BAR NRPC900	5398 AF	1	
5.3	BRACE BAR RETAINER	5601 AF	1	
5.4	BRACE BAR WASHER	5377 BLACK	1	
5.5	PANEL CLAMP WASHER	5601 AF	1	

* ITEM VARIES DEPENDING ON MODEL