

matki | S H O W E R I N G

MATKI ONE MOQP - QUINTESSE PIVOT

INSTALLATION

PARTS LIST



MATKI PLC, CHURCHWARD ROAD, YATE, BRISTOL, BS37 5PL
TELEPHONE:01454 328816 (AFTER SALES) FAX:01454 328821 EMAIL: techsupport@matki.co.uk

IMPORTANT

TOOLS REQUIRED

Masonry Drill bit 6mm, Tape Measure, Screw Drivers, Safety Glasses, Electric Drill, Level, Pencil, Adjustable Spanners, Non Slip Gloves

Before disposing of carton and/or commencing assembly, please check all the parts to ascertain that none are missing and they are all undamaged. No claim for missing/damaged parts will be accepted once the packing carton has been disposed of and/or assembly has commenced.

In case of query contact your Stockist with details of model number and details of serial number.

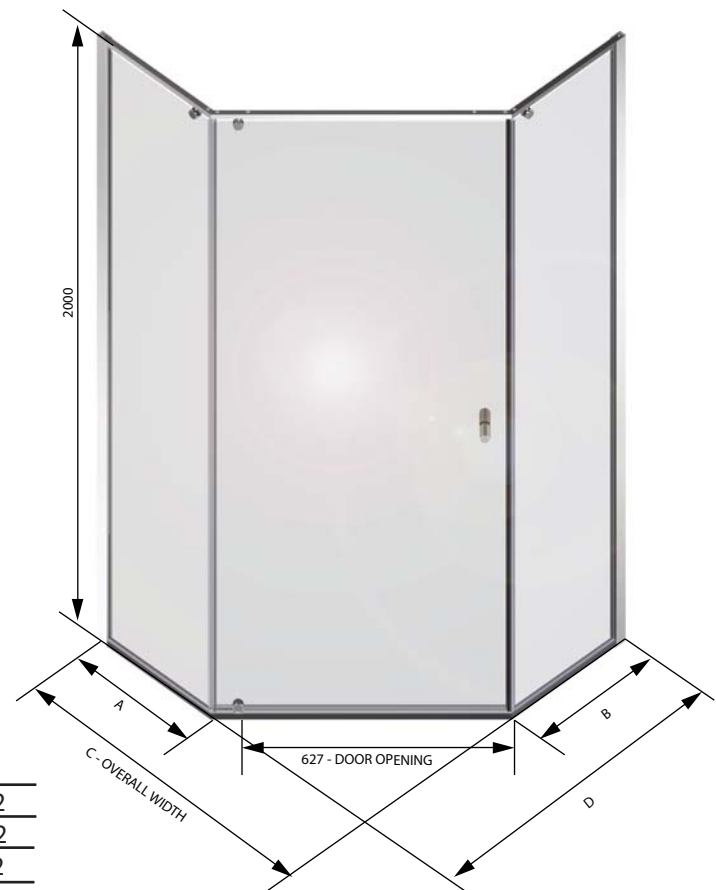
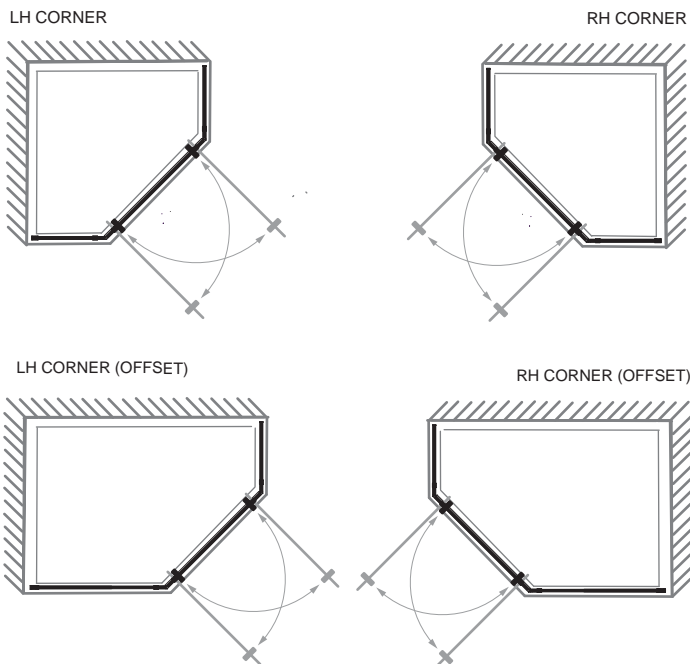
PREPARATION IMPORTANT

1. Please read complete installation instructions before fitting for Enclosure and Tray (if fitting).
2. We recommend the use of Safety glasses and Non slip gloves when handling the glass panels.
3. Ensure that the product can be **fixed** to a **solid masonry wall** or suitable **timber stud work grade C16/C24** in the area behind the Wall frames.
4. Shower trays or tiled floors **must be absolutely level** where enclosures are fitted
5. If fitting a tray we recommend a **drainage test** is carried out before the tray is tiled in position.
6. The assembly should be installed onto a waterproof wall covering and installed after the Tray and wall coverings are in place. Where Tiling lips are provided Trays should be let into the Wall with the Tiling lip flush with the wall to allow the Tiling to overlap the Tiling lip.
7. Seal between tray and tiles. Remove any excess sealant from the area/joint between the tray and the tiles where the Wall Mount is to be fitted. This will ensure the Wall mount fits correctly to the wall and tray/or tiled floor.

CAUTION: TEMPERED GLASS CANNOT BE CUT, POLISHED METAL AND CHROME CAN BE SCRATCHED. CAREFULLY REMOVE ASSEMBLY FROM CARTON, DO NOT PLACE GLASS ON HARD FLOOR OR EXPOSE EDGES TO IMPACT.

DIMENSIONS

QUINTESSE PIVOT
900/1000/1200 X 900



Model	A	B	C	D
MOQP900	373-393	373-393	872-892	872-892
MOQP1000	473-493	473-493	972-992	972-892
MOQP1290	673-693	373-393	1172-1192	872-892

Dimensions are approximate

CONFIGURATIONS



**MOQP 900/1000
CAN HINGE FROM LEFT OR RIGHT**



**MOQP 1200 X 900 LH CORNER (OFFSET)
CAN HINGE FROM LEFT OR RIGHT**

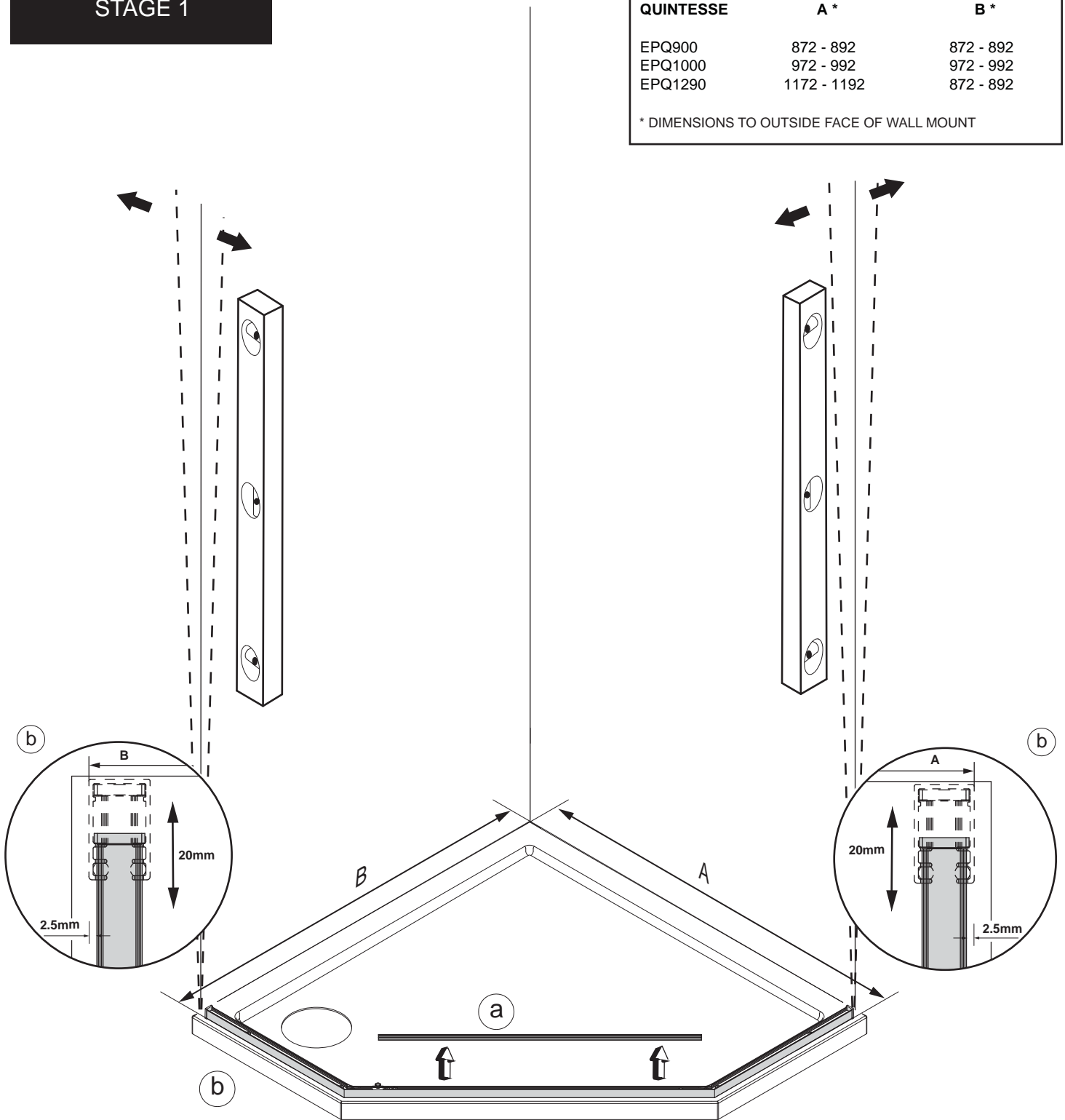


**MOQP 1200 X 900 RH CORNER (OFFSET)
CAN HINGE FROM LEFT OR RIGHT**

STAGE 1

MODEL QUINTESSE	A *	B *
EPQ900	872 - 892	872 - 892
EPQ1000	972 - 992	972 - 992
EPQ1290	1172 - 1192	872 - 892

* DIMENSIONS TO OUTSIDE FACE OF WALL MOUNT



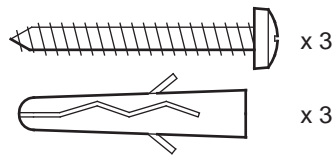
This stage is describing the placement of the Quintesse floor rail.

Important – Check the walls for upright and that the product dimensions will fit the situation before installation. Check the walls for upright before positioning the floor rail assembly. If the wall is leaning **outward** at the top, adjust the floor frame inwards as required to maximise the adjustment range. If the wall is leaning **inwards** at the top, adjust the floor frame outwards as required to maximise the adjustment.

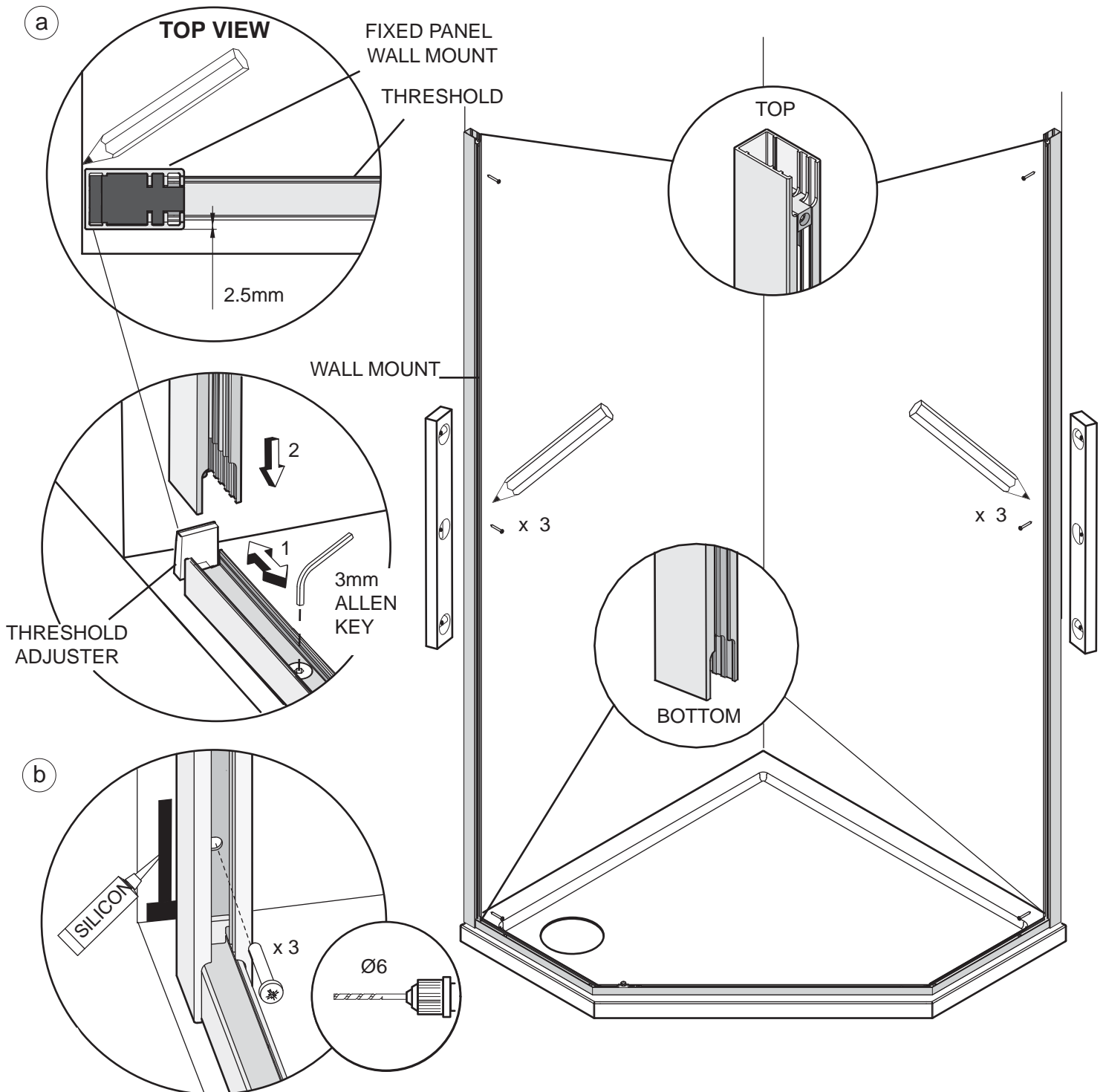
- a. Remove and set aside the long entrance floor rail cover for re-fitting at stage 8.
- b. Place the floor rail assembly onto the tray/floor surface. Measure and mark the distance from the wall to the outside face of the floor rail. The table of dimensions above shows the overall dimensions minimum to maximum to the outside face of the wall mounts. The outside face of the floor rail sits 2.5mm in from the outside face of the wall mount. Please allow for this when fitting the unit.

The Quintesse panels have adjustable wall mounts to compensate for out of plumb walls and size adjustment. There is 20mm of adjustment in both the wall mounts.

STAGE 2



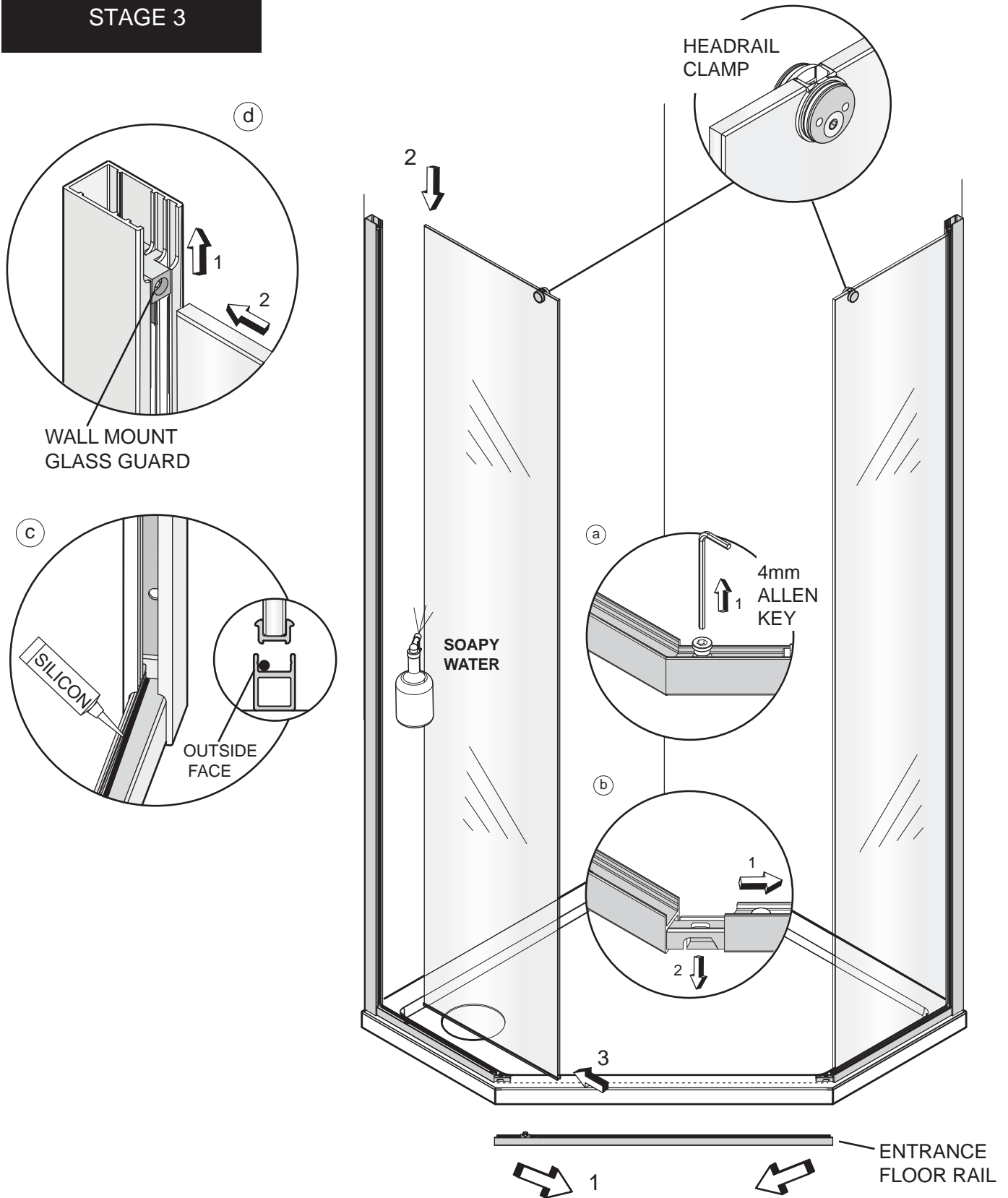
THIS PAGE SHOWS THE PANEL INSTALLATION FOR A LH HINGE DOOR.



This stage is describing the fitting of the Fixed panel wall mounts.

- Place the Quintesse floor rail assembly into position on the tray taking into account the requirements outlined in stage 1. Position the wall mount on to the wall over the floor rail (Wall mount has a top and bottom, wall mount cut-out with socket set screw is the top of the wall mount). Ensure the threshold adjuster fits up into the back of the wall mount extrusion in the recess shown. Adjust the position of the threshold adjusters as required. To adjust loosen screw 1 full turn, re-tighten after adjustment, do not over tighten. Plumb the wall mount for upright and mark the fixing holes in the centre of the slots.
- Drill 3 x fixing holes in the wall and insert the wall plugs. Clean area and apply silicon sealant to the area behind the wall mount between the tray and tiles and 100mm up the wall, central to the width of the wall mount. Fit the wall mount using the No.8 x 38mm pan head screws.
- Repeat for the opposite wall mount.

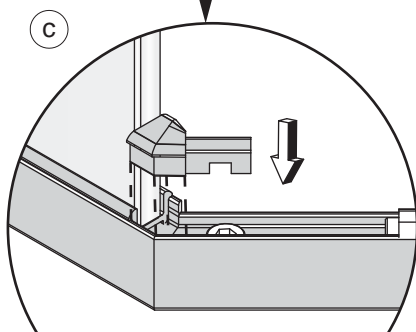
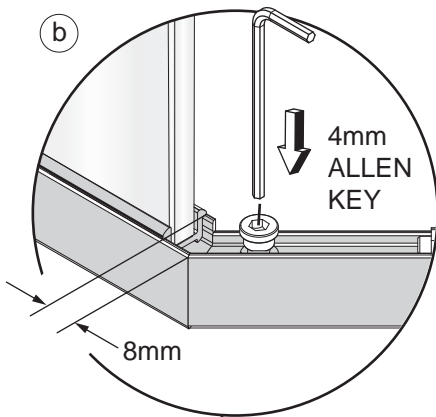
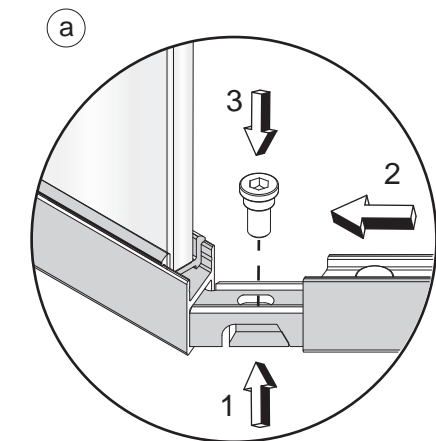
STAGE 3



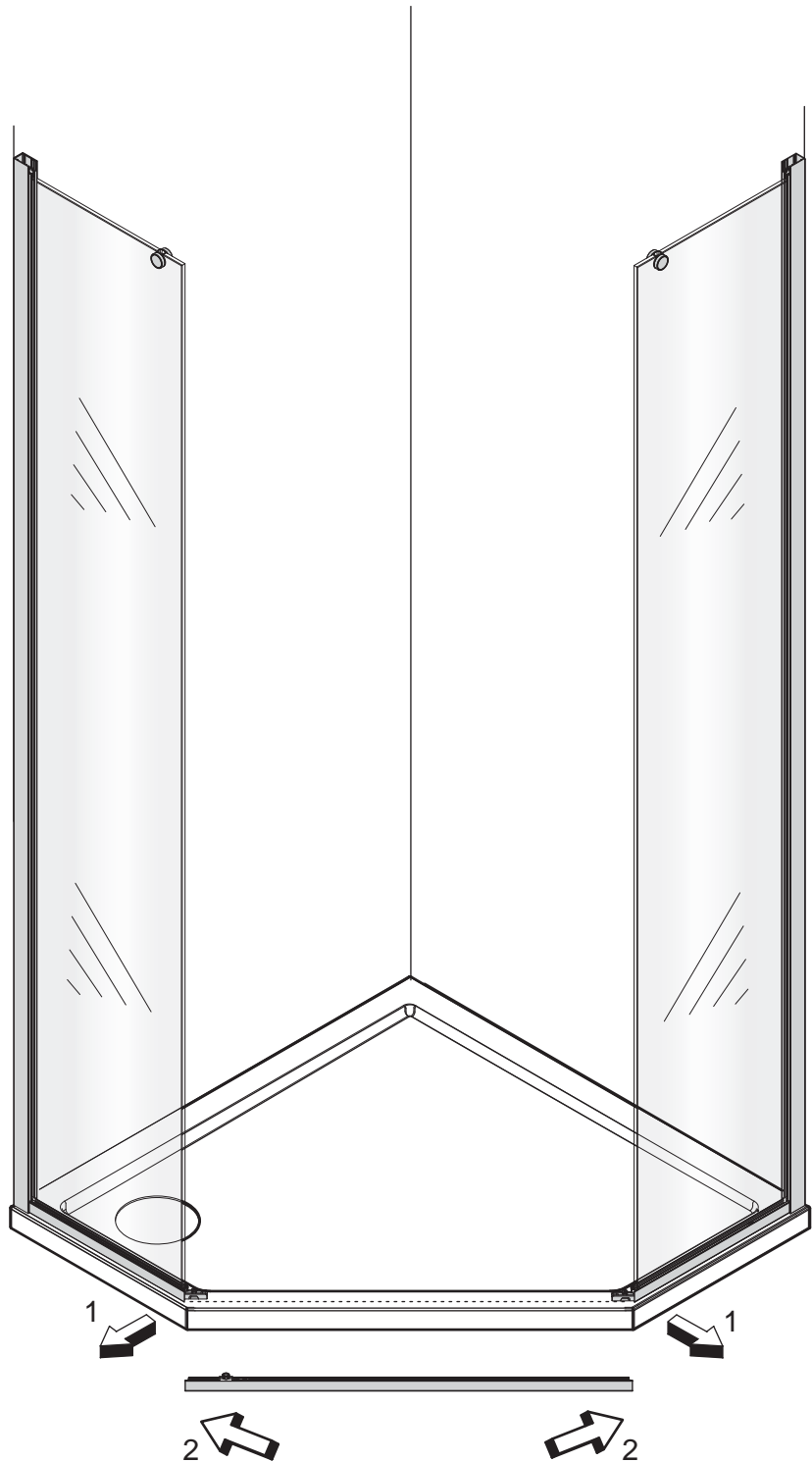
This stage is describing the fitting of the Quintesse fixed panels. Before fitting the fixed glass panels remove the entrance floor rail.

- Remove the M5 socket cap screws using the 4mm Allen key and retain for re-fitting.
- Move the fixed panel floor rail outwards to disengage the internal corner brackets from the entrance floor rail. Retain the M5 socket cap screws and corner bracket wedge shaped nuts for re-fitting the entrance floor rail.
- Apply a bead of silicon along the full length of the outer inside edge recess of both fixed panel floor rails where the fixed panels are to be fitted.
- Before fitting the fixed panels ensure that the wall mount glass guard is pushed up fully to allow the glass to easily slot into the wall mount. The fixed panels are fitted with a clamp for the hearail. The fixed panels must be fitted with the clamps facing the entrance. Lightly wet the edge of the fixed panels with soapy water and gently lower the panel into the floor rail then into the wall mount.

STAGE 4



USE THE CORNER CAP
FOR PANEL POSITIONING

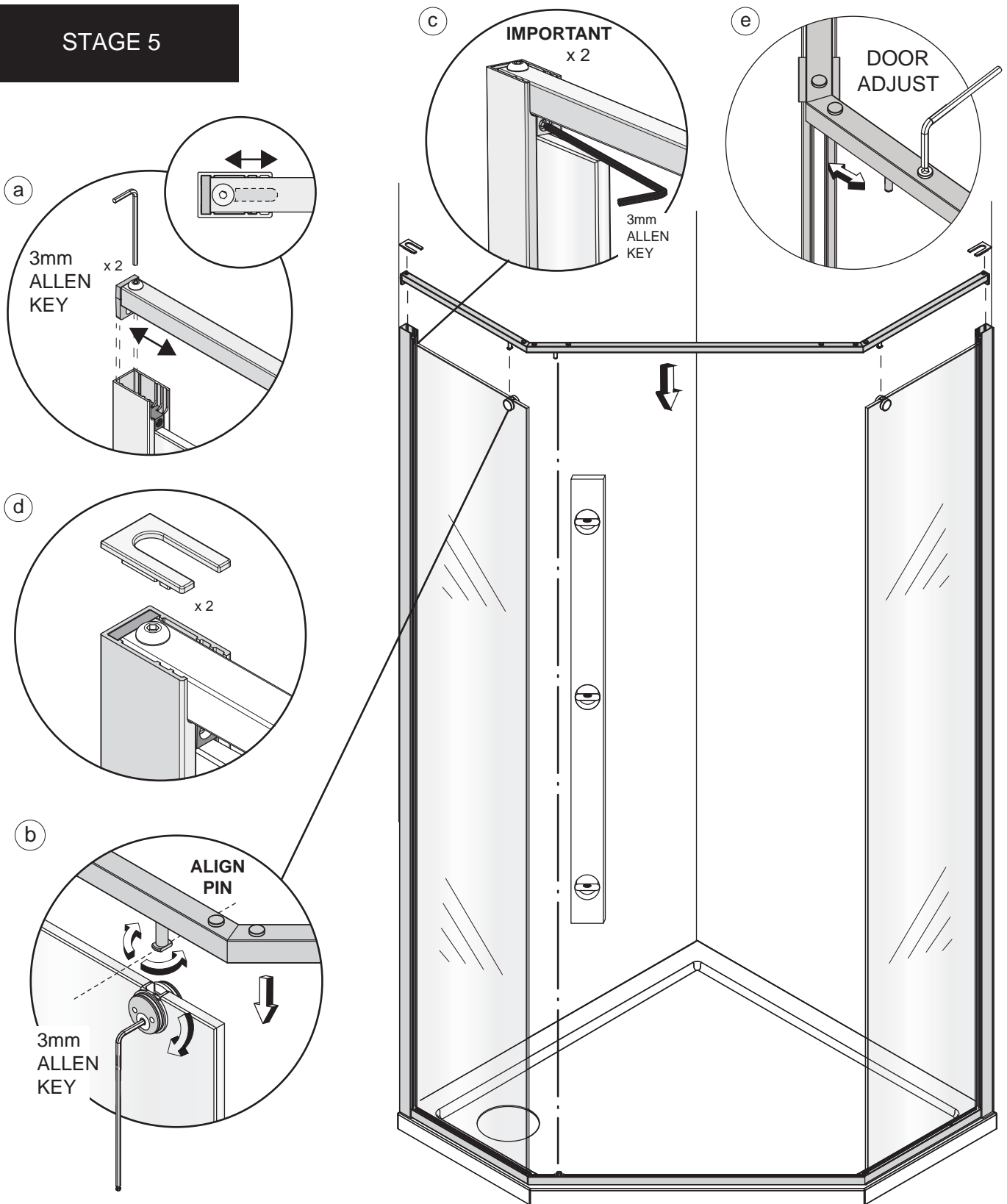


This stage is describing the adjustment of the fixed glass panels and re fitting the entrance floor rail.

Move the fixed glass panels outwards to allow the entrance floor rail to fit back into the internal corner brackets.

- a. Important** - Ensure that the wedge shaped nuts are fitted into the underside of the corner brackets when the entrance floor rail is fitted onto the brackets.
- b.** Fit the M5 socket cap screws and tighten the entrance floor rail in position aligning the corner mitre joints of the floor frame.
- c.** Position the fixed glass panels 8mm from the corner as a guide use the LH and RH corner blocks (supplied in the kit of parts) to set to the correct position.

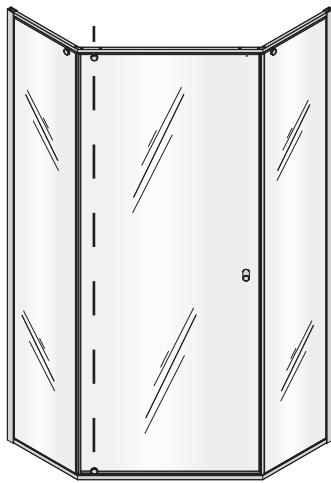
STAGE 5



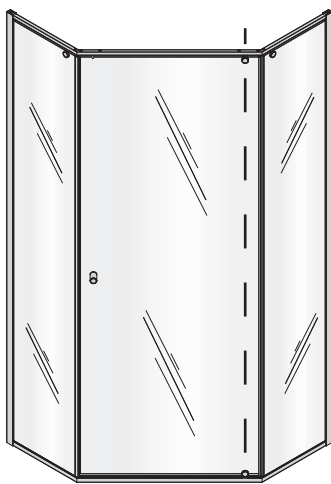
This stage is describing the fitting of the headrail.

- Loosen the headrail adjuster fixings to allow the adjusters to move freely in and out.
- Loosen the headrail clamping brackets on the fixed panels and rotate the front plate downwards. Ensure that the headrail clamp pins that engage into the fixed panel clamps are orientated as shown. Some small height adjustment can be made to the headrail clamp pins by rotating inwards and outwards.
- Lower the headrail into position, ensuring the tongues on the headrail adjusters fit down into the back of the wall mounts and the clamp pins engage into the fixed panel clamps. There is a slot in the face of the clamp plates that the clamp pin engages into.
- Tighten the fixed panel clamp front plates in the upright position.
- Important** – tighten the headrail locking screws underneath the headrail on both wall mounts to fix the headrail to the wall mounts.
- Tighten the headrail adjusters. Using a long spirit level align the upper and lower pivot points.
- If required **Only** adjust the top pivot pin **do not adjust** the lower pivot block. To adjust the top pivot pin position left or right, loosen the socket cap screw in the headrail by one turn only and adjust. Tighten fully before fitting the door.

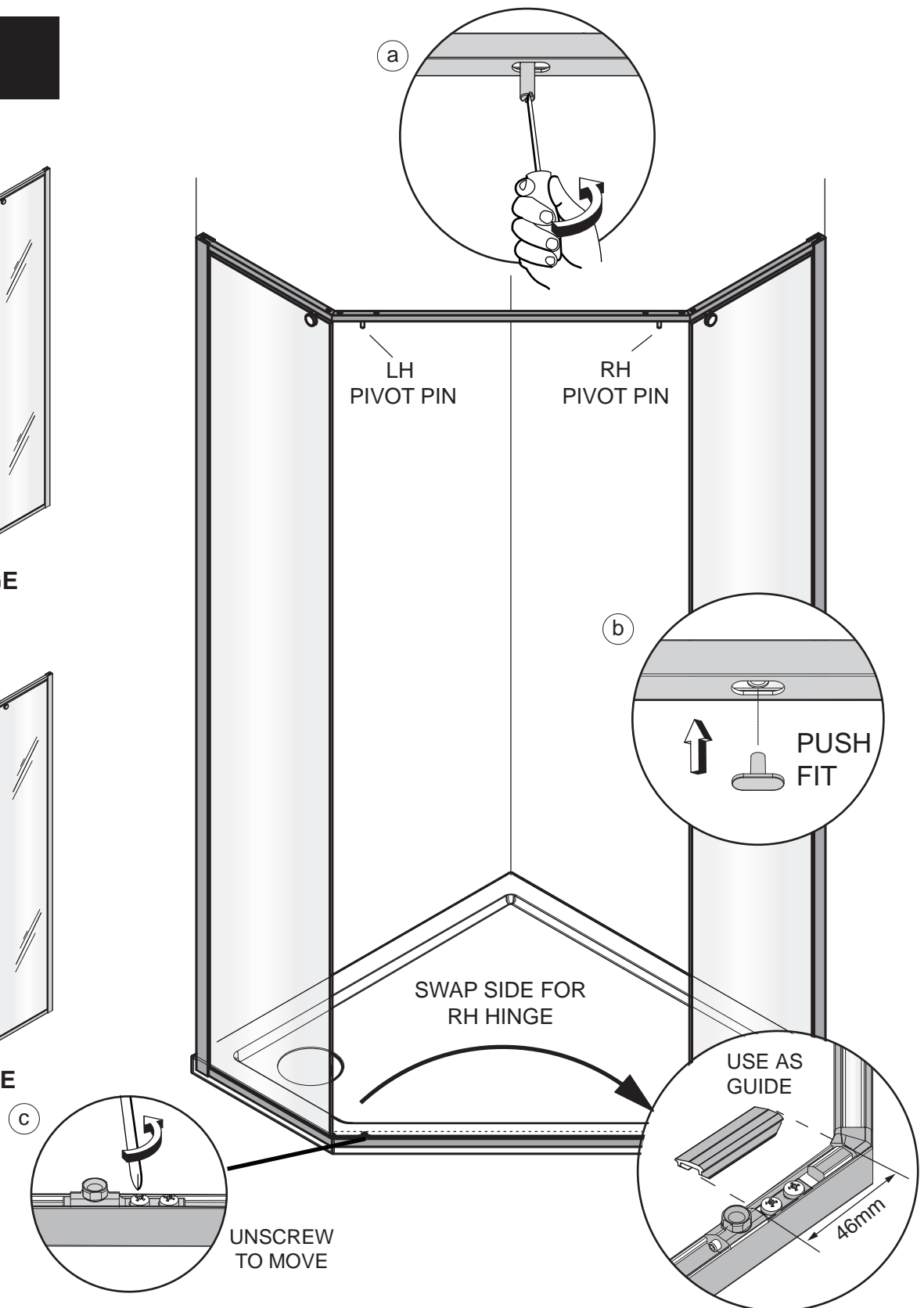
STAGE 6



MOQP LH HINGE



MOQP RH HINGE

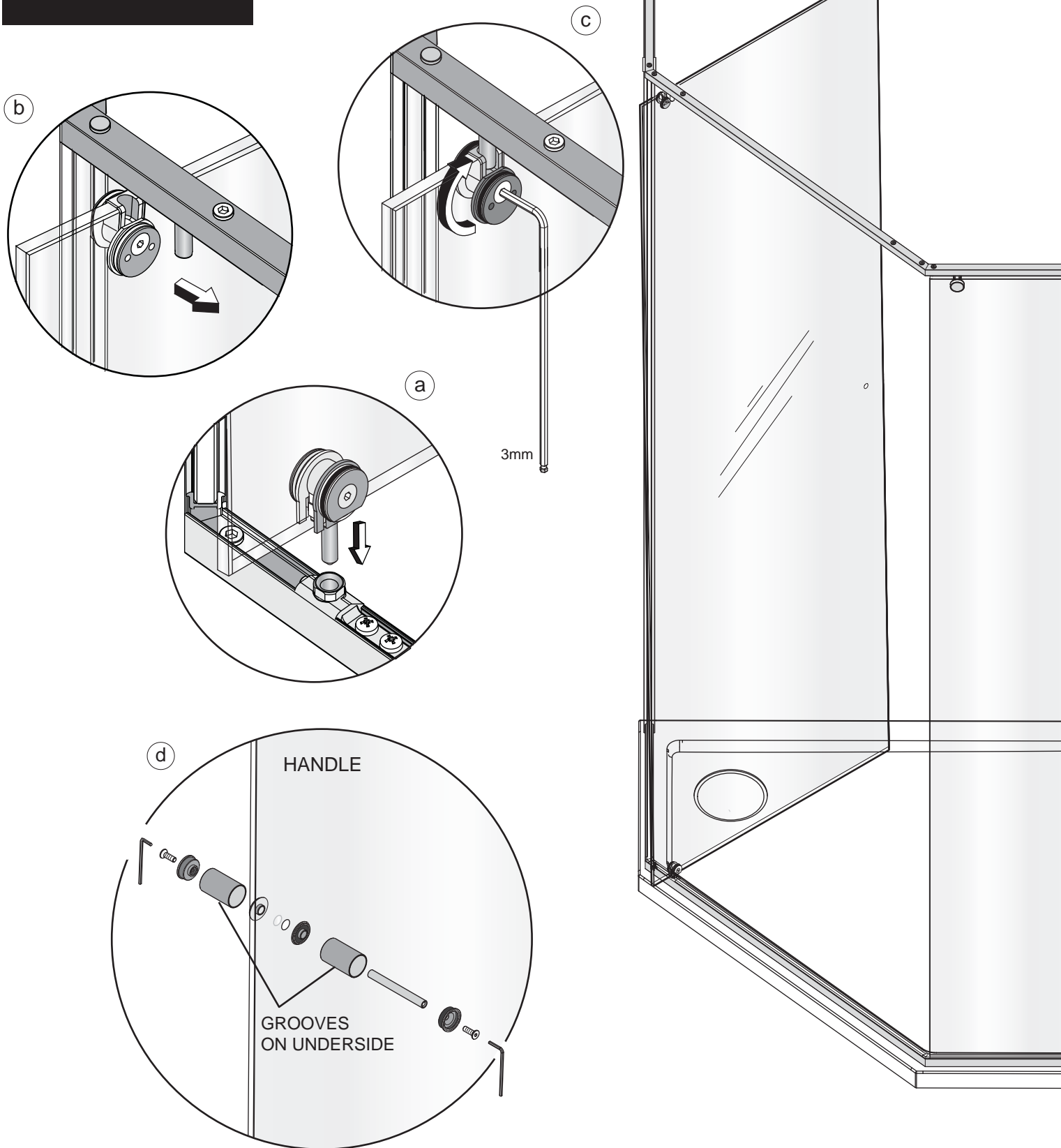


This stage is describing how to change the hand of the product.

The headrail and floor rail are factory assembled for a LH hinged door. For assembly purposes the headrail is also fitted with the pivot pin for a RH hinge.

- Remove the RH pivot pin if using as a LH hinged door. Unscrew the pivot pin with a flat blade screw driver. To change to RH hinge remove the LH hinge pin in the headrail.
- Fit the headrail slot cover in the slot after removing the relevant pivot pin. Adjust the pivot block as required to centre the hole within the slot for the cap.
- For a RH hinge re-position the pivot block in the entrance floor rail to the right hand side of the door opening. Remove the No.8 x 12 screws and re-fit the pivot block. Use the small pivot floor rail cover (supplied in the kit of parts) as a guide to set the pivot block in the correct position. Do not over-tighten the No.8 x 12mm screws.

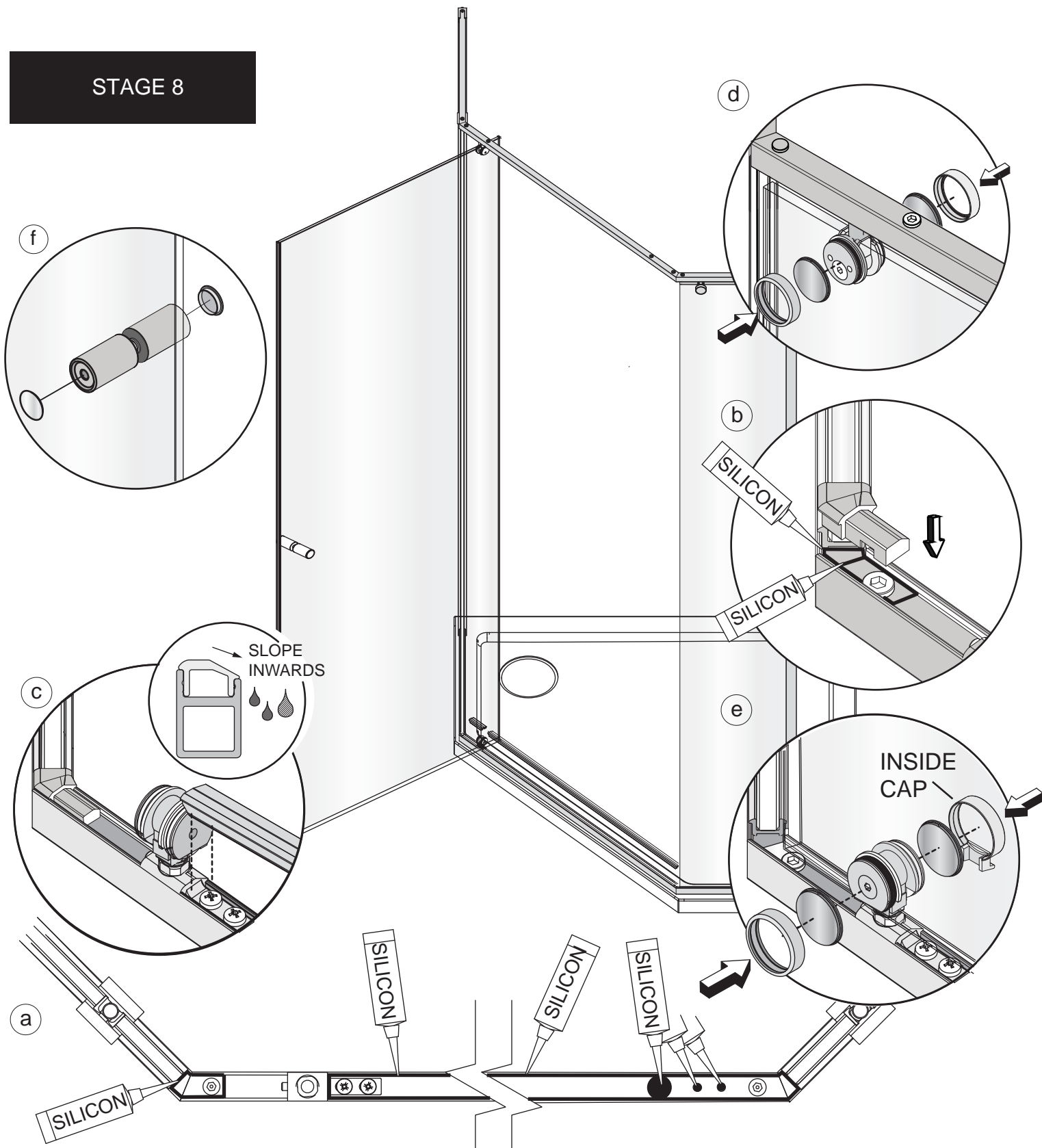
STAGE 7



This stage is describing the fitting of the Door.

- Lift the door and carefully guide the lower pivot block pin into the pivot block fitted to the threshold track.
- From behind guide the upper pivot block pin fixed to the headrail into the cup in the pivot block fitted to the top of the door.
- Rotate the pivot block disc with the socket csk screw 180° so that it secures the door in position. Tighten the socket csk screw.
- Disassemble the handle by unscrewing the 2 x M5 x 12 Csk socket screws. Place the glass washers either side of the 2 holes in the door glass. Re-assemble the handle to the glass and tighten into position with the grooved surfaces on the handle on the underside.

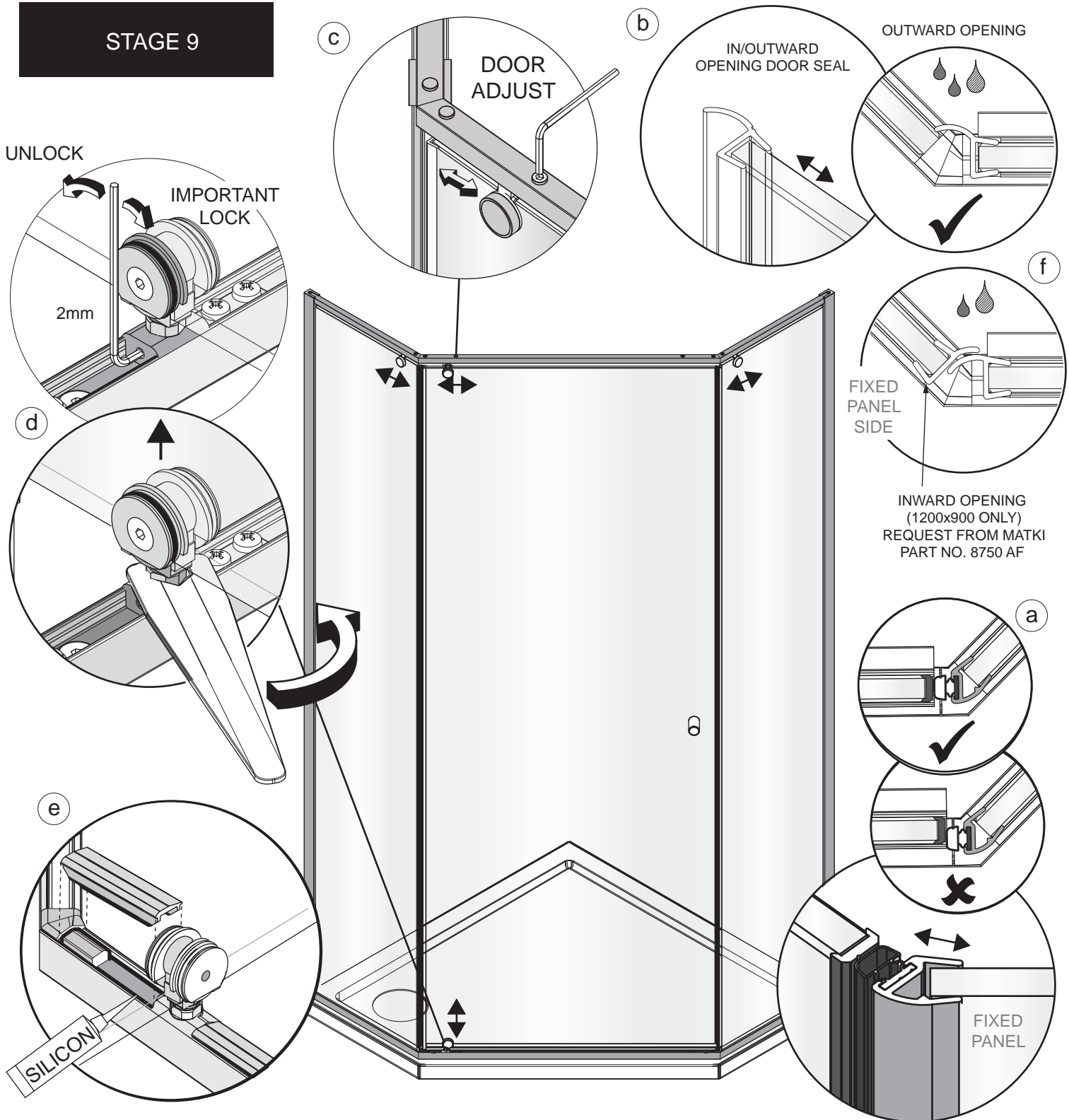
STAGE 8



This stage is describing the fitting of the pivot block detail covers and caps.

- a. Apply a continuous bead of silicon all around the inside of the trough in the entrance floor rail between the edge of the closure panel and the lower pivot block. Fill the lower pivot block fixing holes that are not used with a bead of silicon.
- b. Fit the entrance floor rail corner caps (supplied in the kit of parts) into place.
- c. Fit the **long** entrance floor rail cover between the lower pivot block and closure fixed panel so that the face of the cover is firmly pressed against the face of the lower pivot block and ensure the slope on the cover is facing inward. **Do not fit** the small pivot side floor rail cover until door adjustment is complete. Fit at stage 10.
- d. Fit the upper pivot block cover details (supplied in the kit of parts) over both side of the pivot block.
- e. Fit the lower pivot block covers details (supplied in the kit of parts) over both sides of the lower pivot block, note the inner lower pivot cover has a leg that should be pointing downwards.
- f. Fit the handle cover caps, press firmly into the ends of the handle.

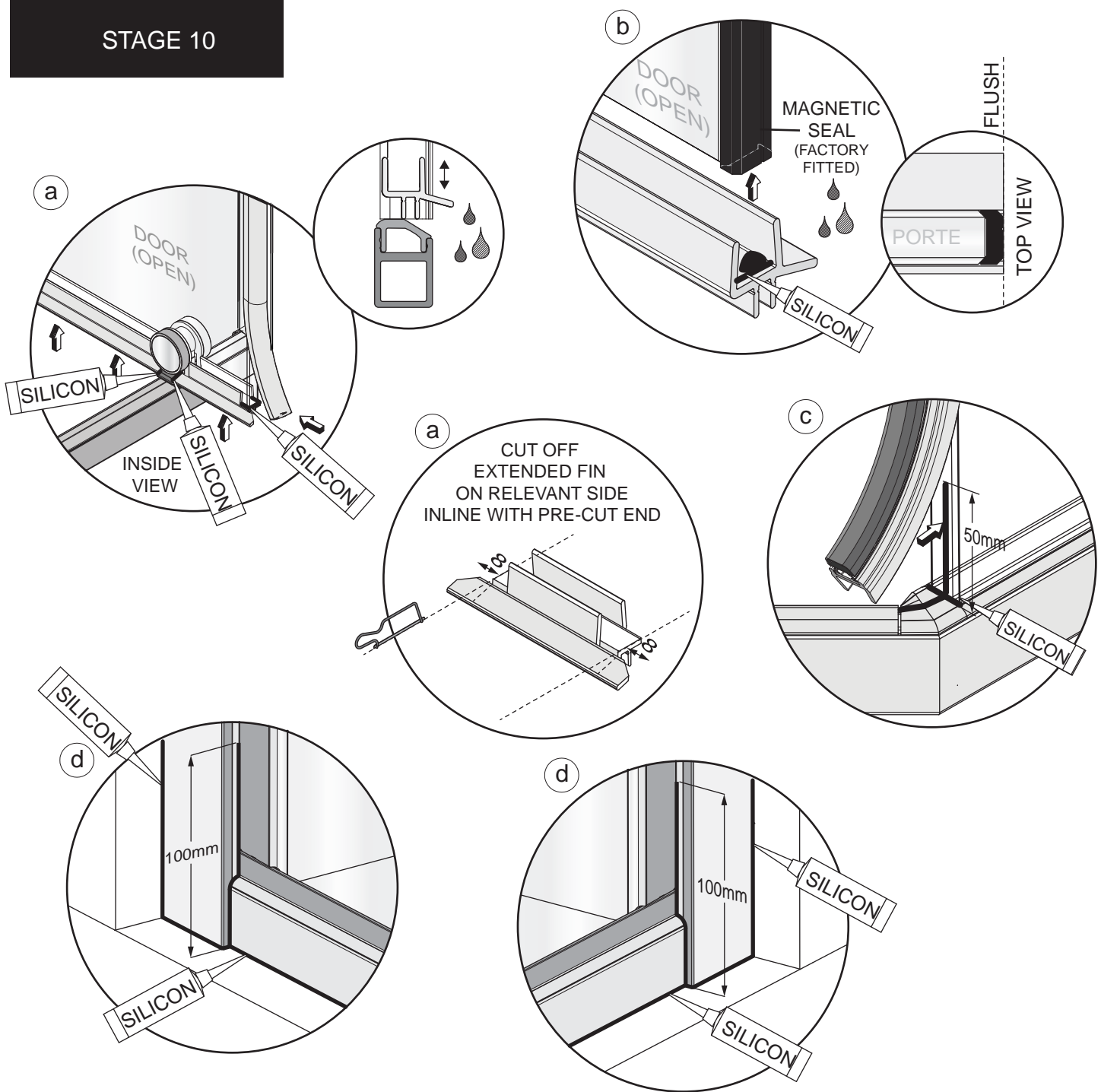
STAGE 9



This stage is describing the Door adjustment.

- a. The door is supplied with two lengths of the magnetic closure seal. The two closure magnets supplied are factory assembled and are handed to match either a RH or LH hinged door. Check the polarity of the magnet closure panel seal is correct with the magnet on the edge of the door. **Use only the length that is correct.** Fit the magnet closure panel seal to the edge of the closure panel. The seal can be adjusted from the panel to meet the door. Check there are no gaps between the door and magnetic closure panel seal.
- b. Fit the door closure seal to the pivot side of the door with the fin on the inside of the door. Fit the door closure seal at the bottom as close as possible to the entrance floor rail ensuring that it does not clash with the floor rail as the door is opened and closed.
- c. To adjust the door left to right at the upper pivot point, loosen the socket cap screw in the headrail by one turn only and adjust the door as required.
- d. To adjust the door up and down at the lower pivot point, firstly loosen the locking screw in the lower pivot block. Then using the spanner (supplied in kit of parts) wind the nut at the base of the pivot block anti-clockwise to raise the door upwards. **Important – Re-tighten locking screw.**
- e. Apply a continuous bead of silicon all around the trough in the entrance floor rail for the small pivot side cover. Fit the cover ensuring the slope on the cover is facing inwards.
- f. The 1200x900 models can be configured to open inwards only, with the door pivoting from the small fixed panel side. The additional seal 8750 AF fits onto the fixed panel, this is not standard and can be supplied on request from Matki. Please contact aftersales on 01454 328816 or email: techsupport@matki.co.uk

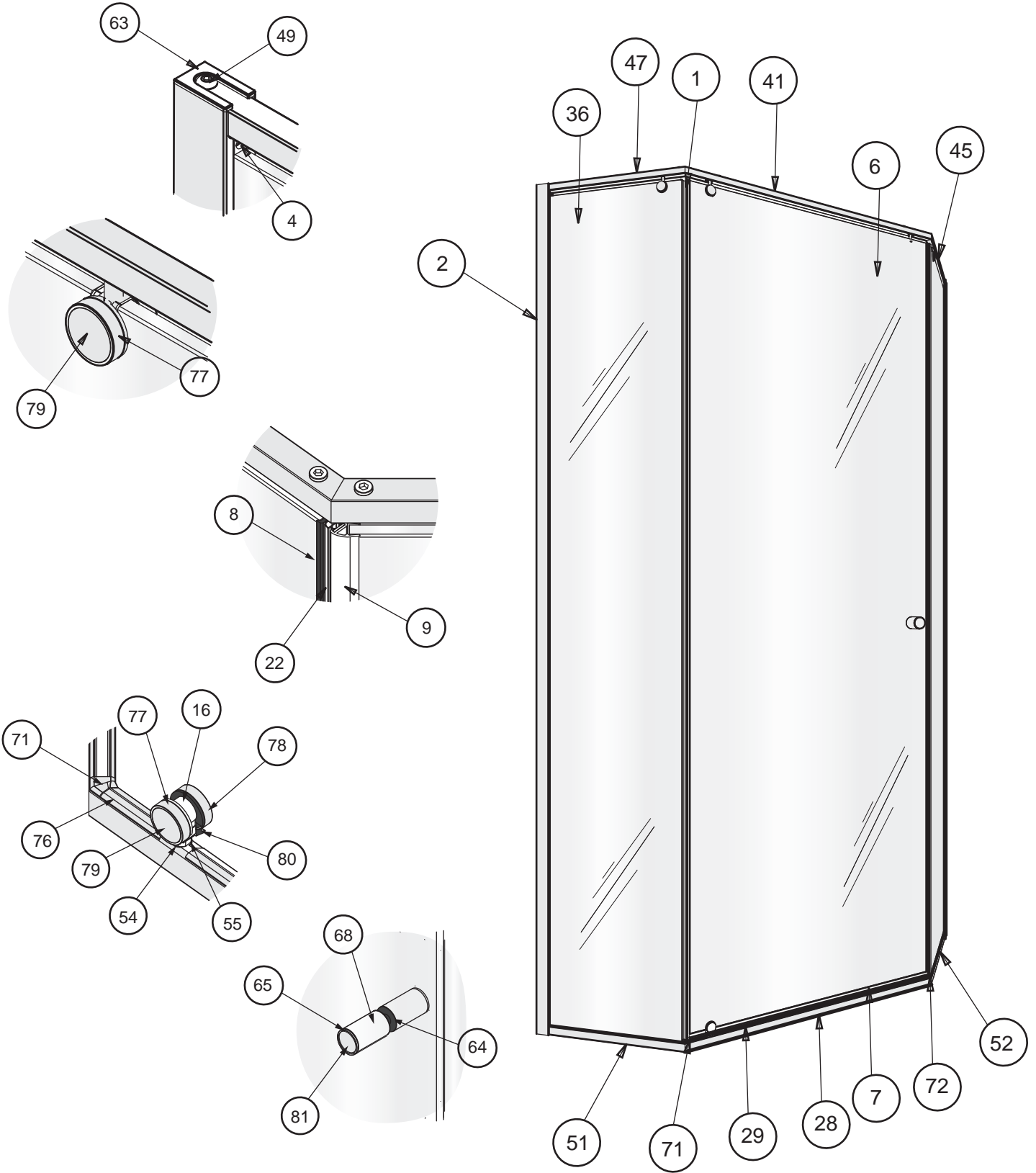
STAGE 10



This stage is describing the final fitting of the Seals and Silicon

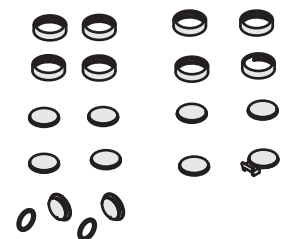
- a. IMPORTANT:** Cut off the extended fin on the side that will fit to the pivot point. Fit the door horizontal seals to the bottom of the door, ensuring that the ends of the seal are firmly pressed up against the side of the lower pivot block on both sides. The horizontal seal deflector faces inwards. Adjust the Horizontal door seals down as required to meet the threshold. Pull off the vertical seal at the bottom on the pivot side and apply a bead of silicon sealant at the end of the horizontal seal, refit the vertical seal. Apply a small bead of silicon to the joints where the horizontal seals meet the inside pivot block cap.
- b.** The end of the horizontal seal must be flush with the edge of the door. Apply a bead of silicon sealant between the bottom of the door and the horizontal seal, clean the silicon flush with the door edge.
- c.** Pull off the closure panel vertical magnetic seal at the bottom. Apply a bead of silicon along the top of the threshold cover cap and vertical edge of the glass panel and refit the magnetic seal to the edge of the glass.
- d.** Apply a thin bead of silicon along the bottom edge of both the wall mounts and all the way up the outside of both the wall mounts and the tiles. Apply a thin bead all the way along the threshold between the extrusion and finished floor surface/tray and the side panel glass where it meets the finished floor surface/tray. Continue around the joint where the threshold joins the wall mounts and also 100mm up on the outside where the wall mount and glass meet. Continue the silicon around the corner joint where the threshold meets the corner extrusion and also 100mm up on the outside where the corner extrusion and glass meet.
- e.** Apply a bead of silicon on the outside around the joints between the threshold cover caps and threshold extrusion. Masking tape can be used to achieve a tidy edge to the sealant. Remove the masking tape immediately and allow the silicon to cure for 24 hours before using the shower.

PARTS LIST



***QUINTESSE DISK KIT OF PARTS (7368 A SILVER)**

ITEM	DESCRIPTION	PART No	QTY
77	DECO DISK COVER RING	8252 A SILVER	7
78	DECO DISK WITH CUT OUT	8269 A SILVER	1
*79	DECORATIVE PIVOT DISK	8652 A SILVER	7
*80	DECO PIVOT DISK WITH SEAL	8440 A SILVER	1
*81	DECORATIVE HANDLE CAP	8400 A SILVER	2
82	DIN O-Ring 0140-20	8582 AF	2
83	MTK1 PIVOT & QUINT DISK DISPLAY PACK	4682 AF	1
84	MATKI CHROME EMBLEM	1005 CHROME	1



PARTS LIST

* colour variant on parts

DOOR PACK

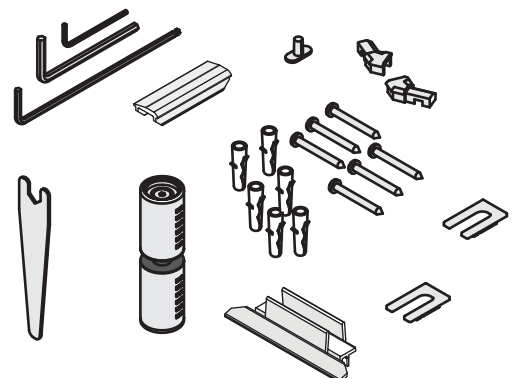
ITEM	DESCRIPTION	PART No	QTY
1	OUTWARD V DOOR CLOSURE SEAL	8619 AF	1
*2	PIVOT WALL MOUNT	7628 A SILVER/BLACK/WHITE/BRONZE	2
*3	WALL MOUNT GLASS GUARD	8415 GREY/WHITE/BLACK	2
4	WALL MOUNT LOCKING SCREW	8266 AF	2
5	BS nsp 5mm DIA FOAM CORD INSERT	1752 AF	8
6	QUINTESSÉ DOOR	7708 M CLEAR/PLAIN	1
7	HORIZONTAL DOOR SEAL	8598 CLEAR	1
8	PIVOT DOOR CLOSURE MAGNET C0923	8645 AF	2
9	QUINTESSÉ MAGNET CARRIER	8700 AF	2
10	TOP PIVOT BLOCK	8422 A SILVER	1
11	PIVOT SLEEVE TOP	8413 GREY	1
12	TOP PIVOT GUARD	8417 GREY	1
13	PIVOT BLOCK CAP	8254 A SILVER	1
14	DIN O-Ring 0190-20	8579 AF	4
15	M5 X 20 CSK SOCKET SCREW ST.ST	1503 A SILVER	2
16	PIVOT PIN	8421 AF	1
17	PIVOT DISK WITH COUNTERSINK	8255 A SILVER	1
18	PIVOT DISK WITH BOSS	8256 A SILVER	1
19	BOTTOM PIVOT GLASS BUSH	8414 GREY	1
20	BOTTOM PIVOT GLASS BUSH 2	8418 GREY	1
21	DIN 916 M4 X 6 SOCKET SET SCREW	1213 A SILVER	2
22	PIVOT DOOR MAGNET	8679 AF	1
23	MATKI ONE QUINTESSÉ INSTALLATION INSTRUCTIONS	0949 AF	1
24	DIN 914 M4 X 5 SOCKET SET SCREW ST.ST	1214 A SILVER	1
*25	MATKI ONE QUINTESSÉ DISK KIT OF PARTS	7368 AF (SILVER/BLUE/GREEN/RED/GOLD/COPPER/BRASS/WHITE/BLACK)	1
26	MATKI ONE QUINTESSÉ KIT OF PARTS	7361 A SILVER (BRASS/ COPPER)	1

PANEL AND FRAME PACK

ITEM	DESCRIPTION	PART No	QTY
27	TOP PIVOT PIN	8253 AF	2
28	QUINTESSÉ FLOOR RAIL FRONT	8640 A SILVER	1
29	QUINTESSÉ THRESHOLD	8651 A SILVER	1
30	M5 X 40 CSK SOCKET SET SCREW ST.ST	1503 A SILVER	2
31	QUINTESSÉ TOP TRACK CORNER BLOCK LH	8654 AF	2
32	QUINTESSÉ TOP TRACK CORNER LOCKING BLOCK	8188 AF	8
33	QUINTESSÉ CORNER BLOCK LH	8654 AF	1
34	PIVOT BLOCK ADJUSTER SCREW	8261 AF	8
35	QUINTESSÉ FIXED PANEL HORIZONTAL	8682 A SILVER(900) / 8751 A SILVER(1000) / 8683 A SILVER(1200)	2
36	QUINTESSÉ PANEL	7674 M CLEAR/PLAIN(900) / 7680 M CLEAR/PLAIN(1000) / 7675 M CLEAR/PLAIN(1200)	2
37	PIVOT BLOCK CAP	8254 A SILVER	2
38	INLINE PIVOT BLOCK CAP	8401 A SILVER	2
39	QUINTESSÉ NOTCH CLAMP BODY	8643 GREY	2
40	DIN 0190-20 O-Ring	8579 AF	4
41	QUINTESSÉ TOP BAR FRONT	8686 A SILVER	1
42	ADJUSTING PIVOT BLOCK	8589 A SILVER	2
43	ADJUSTER CLAMP	8427 AF	6
44	QUINTESSÉ NOTCH CLAMP PIN	8639 AF	2
45	QUINTESSÉ TOP BAR RH	8684 A SILVER(900) / 8704 A SILVER(1000) / 8685 A SILVER(1200)	1
46	QUINTESSÉ CORNER BLOCK RH	8655 AF	2
47	QUINTESSÉ TOP BAR LH	8732 A SILVER(900) / 8707 A SILVER(900) / 8733 A SILVER(1200)	1
48	TOP WALL CORNER BRACKET	8452 AF	2
49	M5 X 12 SOCKET DOMED SCREW	1282 A SILVER	2
50	M5 x 10 CSK SOCKET SCREW	1488 A SILVER	4
51	QUINTESSÉ FLOOR RAIL LH	8648 A SILVER(900) / 8743 A SILVER(1000) / 8649 A SILVER(1200)	1
52	QUINTESSÉ FLOOR RAIL RH	8646 A SILVER(900) / 8710 A SILVER(1000) / 8647 A SILVER(1200)	1
53	BOTTOM WALL CORNER BRACKET	8431 AF	2
54	QUINTESSÉ PIVOT BLOCK	8656 AF	1
55	PIVOT HEIGHT ADJUSTER	8258 AF	1
56	DIN 916 M4 X 8 SOCKET SET SCREW ST.ST	1360 A SILVER	1
57	No. 8 x 12 PAN POZI S.TAP ST/ST SCREW	1424 A SILVER	2
58	INLINE NOTCH PIVOT GUARD	8403 GREY	2

QUINTESSÉ KIT OF PARTS (7361 A SILVER)

ITEM	DESCRIPTION	PART No	QTY
59	WALL PLUG	1818 AF	6
60	3mm AF BALL END	8622 AF	1
61	2mm ALLEN KEY	1286 AF	1
62	4mm ALLEN KEY	1166 AF	1
63	WALL MOUNT TOP CAP	8441 A SILVER	2
64	HANDLE WASHER	8439 GREY	2
*65	HANDLE CAP WASHER	8257 A SILVER	2
66	HANDLE CENTRAL BAR	8250 A SILVER	1
67	M5 X 12 CSK SOCKET SCREW ST.ST	1417 A SILVER	2
*68	PIVOT DOOR HANDLE SLEEVE	8641 A SILVER	2
69	No. 8 x 38 PAN HEAD POZI S.TAP ST/ST	1210 A SILVER	6
70	111 10mm OPEN-END SPANNER	7599 AF	1
71	QUINTESSÉ CORNER BLOCK LH	8657 A SILVER	1
72	QUINTESSÉ CORNER BLOCK RH	8653 A SILVER	1
73	HEADRAIL SLOT CAP	8706 A SILVER	1
74	CLEAR MATKI SEALANT 78g WITH LOGO	1967 AF	1
75	QUINTESSÉ PIVOT SIDE HORIZONTAL SEAL	8801 CLEAR	1
76	QUINTESSÉ THRESHOLD COVER SMALL	8560 A SILVER	1



MAINTENANCE

Matki Glass Guard Easy Clean Surface Protection (optional) and General Cleaning Guide

Cleaning Instructions

Matki Glass Guard allows water to form minute beads which easily trickle off the surface of the glass. This makes the glass easier to clean - the glass does not need to be cleaned as frequently, but it does require occasional maintenance. As less cleaning is required the use of detergents can be minimised thus helping to protect the environment. The lifespan of the Matki Glass Guard is dependant on the frequency of use of the shower and the degree of water hardness.

The combination of alkaline materials and humidity affects glass in an extremely aggressive way. Do not use bleach, alkaline, acid-based or aggressive and abrasive glass cleaners, detergents or household cleaning products on the glass or frames.

We recommend that glass is washed down with clean water and a soft clean cloth or sponge and dried off with a microfibre cloth.

The special coating is only present on the inside of the glass.

Matki Glass Guard is guaranteed for 2 years provided that the guidelines and cleaning instructions are followed.

Aluminium and Chrome parts should be cleaned with a mild non scratch household cleaner and a soft cloth or sponge.

Do not use acidic-based descaler products or products which are unsuitable for cleaning enamelled surfaces, including abrasive cleaners or cleaners containing bleach or solvents, as the products will effect the anodised framework. Under no circumstances use cleaners with a pH level exceeding 8.

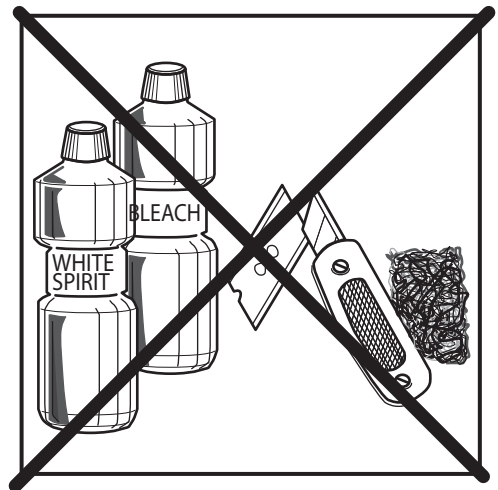
Matki does not recommend the use of 'Leave-on' shower cleaners on Matki Glass Guard Products.

Water Softeners and Glass Guard - Certain types of water softeners increase the alkalinity of the water due to a carry-over of Chloride during re-generation which can cause aggressive water spots on both untreated and Glass Guarded glass. If using a water softener we recommend a two-cylinder machine with automatic re-generation instead of a timer. If a single-cylinder water softener with timer is already installed it is recommended that after each shower excess water is removed from the glass with a squeegee or with a micro-fibre cloth.

Annual recommended maintenance - Matki recommend annually lubricating the barrel of the hinge with a lubricating spray such as WD-40 to remove dust build-up and to aid the movement of the hinge.



Wash down with clean warm water and a soft clean cloth or sponge.



Do not use bleach, alkaline or acid-based, aggressive or abrasive cleaning products.

Flash Bathroom Spray or Cif Bathroom Spray can be used on Matki Products. Read manufacturers label before using any cleaning materials.

IMPORTANT

Matki Glass Guard is guaranteed for 2 years. It is essential that the cleaning instructions are followed in order to maintain the hydrophobic properties of the glass coating. In the event of the failure to comply in any way with these instructions, any warranty or guarantee will be null and void.

MATKI PLC, CHURCHWARD ROAD, YATE, BRISTOL, BS37 5PL
TELEPHONE:01454 328816 (AFTER SALES) FAX:01454 328821 EMAIL: techsupport@matki.co.uk

CE

matki | SHOWERING

13

Matki PLC, Churchward Road, Yate,
Bristol BS37 5PL

EN 14428:2008+A1