



Edgemere interlocking slates

Edgemere interlocking slates

The Edgemere range of interlocking concrete slates offers single lap solutions that are quick and easy to install and replicate the appearance of the natural material.

Available in Standard, Riven and Duo formats, Edgemere not only offers a range of slate-like finishes, but also outstanding durability, versatility and appeal, and is complemented by a range of ventilation and dry fix systems, underpinned by first class Customer and Technical services

In addition to this, Edgemere offers impressive environmental credentials. An A+ rating available in the BRE Green Guide* is complemented by certification under the BES 6001 Standard for Responsible Sourcing, thereby helping to contribute towards maximum material credits under the Code for Sustainable Homes or BREEAM.

* Element Refs: 812410007, 812410018, 812410049



All factories certified to
ISO 9001, ISO 14001,
OHSAS 18001

nssPlus

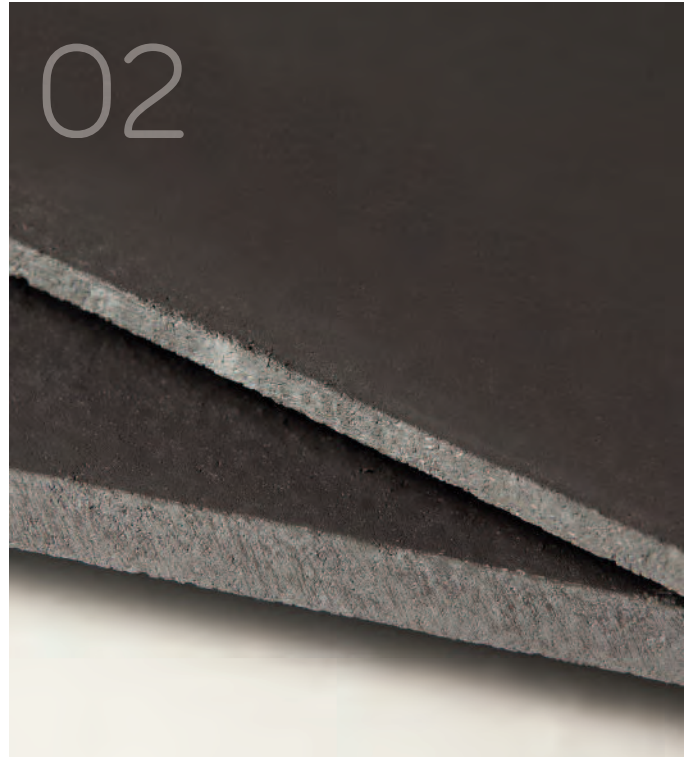




Contents

2	Introduction	8	Case studies
4	Why choose Edgemere interlocking slates?	18	Technical toolkit, services, sustainability and standards
6	Product data		

Why choose Edgemere interlocking slates?



The thin (18mm) leading edge of Standard, Riven and Duo Edgemere slates, offers a range of low profile and slate-like solutions, providing an affordable upgrade to standard interlocking tiles, or a cost effective alternative to natural slate.

Features

- 01 Available in three versions
- 02 Thin leading edge
- 03 A+ rating and BES 6001 certification
- 04 Large format
- 05 17.5° low minimum pitch
- 06 Range of fittings and accessories

Benefits

- To suit a range of roofscapes
- For slate-like appearance and kerb appeal
- For environmental excellence
- For quick and easy installation
- For versatility of application
- Providing a low maintenance system





The thin (18mm) leading edge of the Edgemere range offers affordable, aesthetic, low profile solutions.

> Tilefix

marleyeternit.co.uk/tilefix

> CAD

marleyeternit.co.uk/cad

> NBS specs

marleyeternit.co.uk/specrite

> Fixing guide

marleyeternit.co.uk/resources

Edgemere

interlocking slates

Technical data		
Size	420mm x 330mm	
Minimum pitch**	22.5° (75mm lap)	17.5° (100mm lap)
Maximum pitch	90°	
Minimum lap	75mm (22.5° and above)	100mm (below 22.5°)
Maximum gauge	345mm	
Tile thickness	18mm (nominal)	
Cover width	298mm (nominal)	
Hanging length	395mm (nominal)	
Covering capacity (net)	9.7 slates/m ² at 75mm lap	10.5 slates/m ² at 100mm lap
Weight of slating (approx.)	44 kg/m ² (0.43 kN/m ²) at 75mm lap	47.5 kg/m ² (0.47 kN/m ²) at 100mm lap
Battens required (net)	2.9 lin.m/m ² at 75mm lap	3.1 lin.m/m ² at 100mm lap
Batten size recommended	38 x 25mm for rafters/supports not exceeding 450mm centres 50 x 25mm for rafters/supports not exceeding 600mm centres (fixed to BS 5534)	
Fixings	Slate nails (45 x 3.35mm)	
Fixing clips	Eaves, verge and tile clips	
Authority	BS EN 490	

* The minimum recommended pitch and lap may be influenced by special circumstances, please contact the Technical Advisory Service.

† Edgemere and Riven Edgemere should be laid broken bond. The required broken bond pattern is created by the introduction of half slates, to form verges in alternate courses.

‡ Duo Edgemere should be laid a quarter broken bond. The required broken bond pattern is created by the introduction of three quarter width slates, cut from standard slates on site to form verge slates in alternate courses.

Sustainability

Green guide rating	A ⁺ (Element refs: 812410007, 812410018, 812410049)
BES 6001	Good
Embodied carbon	Low carbon footprint of 10.67 CO ₂ e/m ²

Edgemere[†]

Enhanced with a broken bond, provides not only a more slate-like appearance, but an affordable upgrade to standard interlocking tiles.

Duo Edgemere[‡]

The addition of a mock bond down the centre of the tile, creates the appearance of a small format slate.

Riven Edgemere[†]

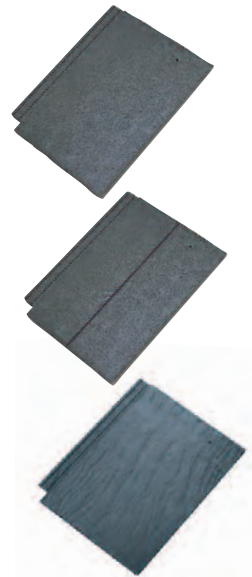
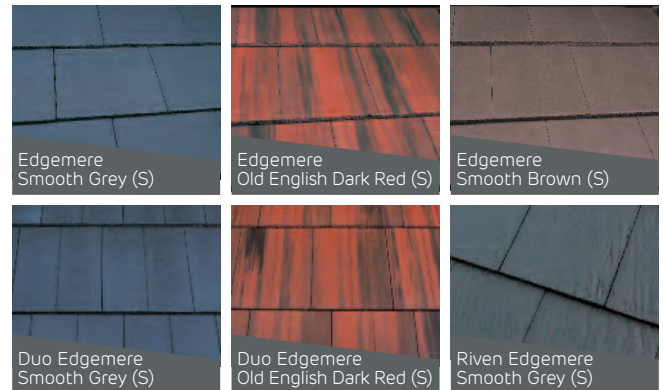
A randomised texture applied to the surface, ensures an attractive and variegated appearance, providing a finish which even more closely resembles natural slate.

Edgemere fittings

Available in all colours to match main slates.

Colour availability

Key (S) Smooth finish

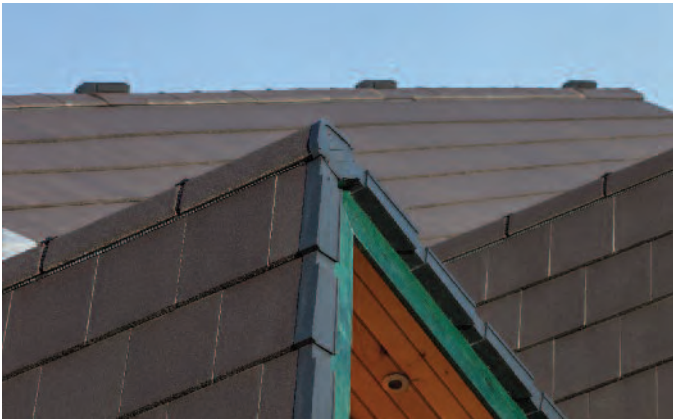


Pine View

case study

“The natural look of the slate tile works extremely well with the striking nature of the log homes we have built and are very pleasing to the eye. We are delighted with the product and the service we received from Marley Eternit, and would thoroughly recommend the Edgemere product.”

Jem Hudson, Foundation Matters



Project information

Location: Derby

Application: Residential

Product: Edgemere interlocking slates in Smooth Grey

Specifier: Foundation Matters

Marley Eternit's market-leading Edgemere interlocking slate has been specified as part of the construction of two pioneering, pre-fabricated Canadian Log Homes at a campsite for Christian charity, Foundation Matters.

Jem Hudson, who runs Foundation Matters with his family, identified the pre-fabricated log homes solution at the Grand Designs show in Birmingham and immediately set about ordering two dwellings of 700 and 500m² respectively from the Canadian-based supplier. After discussions with the local planning officer, Marley's Edgemere interlocking slate was selected as an aesthetically pleasing and practical roofing solution which would complement the natural look of the log homes.

The main centre used 6,800 Edgemere slates, with the smaller manager's home requiring approximately 2,300 slates in total.





Abbotswood Park

case study

“Edgemere was the ideal choice for the roof with its thin leading edge, giving the appearance of natural slate at a more cost effective price. We received excellent technical support from Marley Eternit and we’re really pleased with the end result.”

Adam Watts, Technical Director, Bellway Homes



Project information

Location:	Leavesden
Application:	Residential
Product:	Edgemere interlocking slates in Smooth Grey and Old English Dark Red
Specifier:	Bellway Homes

The 425 family and affordable homes at Abbotswood Park have been built by Bellway Homes, using both Old English Dark Red and Smooth Grey Edgemere slates, to create a mixture of roof heights and designs, adding rhythm and interest to the streetscape.

Situated next door to Warner Bros studios and steeped in historical, industrial and film making history, there were strict design parameters put in place by the local planning office to ensure the site would be developed to create a clear sense of identity and mixture of homes.

The different roof forms, heights and designs were a key part of creating this identity and Bellway Homes chose Marley Eternit’s Edgemere slates to give a contemporary, yet cost effective, roof covering that could be used to add character to different parts of the development.



Oak House

case study



Project information

Location: Tipton

Application: Healthcare

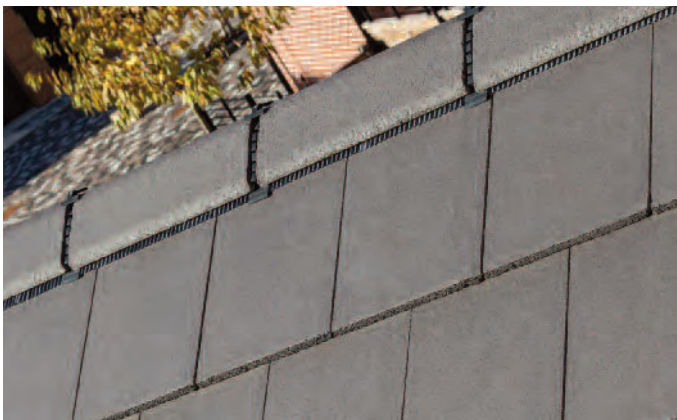
Product: Riven Edgemere interlocking slates in Smooth Grey

Specifier: Camino Healthcare

The Oak House roof is finished in two different materials; 2,500 Riven Edgemere slates in Smooth Grey have been used on one section of the building, together with zinc panels to provide a contemporary yet industrial feel on the other roof plane.



St Mary's case study



Project information

Location: Oldham

Application: Residential

Product: Edgemere interlocking slates in Smooth Grey

Specifier: Nicol Thomas

An award-winning £15 million social housing development has transformed a derelict site on the edge of Oldham's town centre. Local architects Nicol Thomas chose Marley Eternit's Edgemere slates as they give a sleek slate-like effect to complement the distinctive design of the properties. Four of the properties are built to the Code for Sustainable Homes level 6, where the environmental credentials of Edgemere helped achieve extra credits for materials.



Hayfield Grange

case study

“The Hayfield Grange development is in a picturesque setting and we needed to use a roof tile that both complemented the contemporary style of the homes and blended in with the local surroundings. The Marley Eternit Duo Edgemere slate gives the properties a premium, slate-like finish more cost effectively and is quicker and easier to install.”

Graham Ross, Marley Contract Services



Project information

Location:	Aberdeen
Application:	Residential
Product:	Duo Edgemere interlocking slates in Smooth Grey
Specifier:	Marley Contract Services

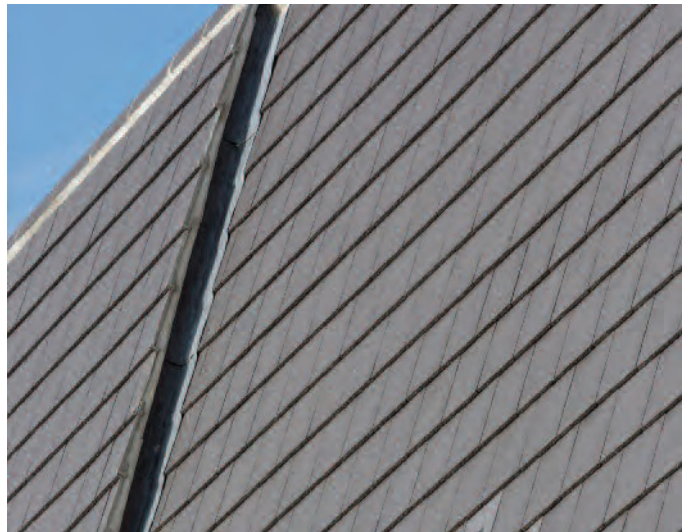
Marley Eternit's Duo Edgemere slates have been used to give a slate-like finish on an award winning roofing project for ten prestigious new build homes in the highly desirable Cults area of Aberdeen.

The Cala Homes development at Hayfield Grange includes ten detached luxury properties finished with a distinctive exterior. Marley Contract Services was appointed to complete the roofing contract and specified the Duo Edgemere tiles in Smooth Grey to complement the stone finish of the homes. Marley Eternit's concrete plain tiles were also used around the dormer windows on the luxury homes.

Lark Place

case study

Leading East Anglian independent property developer, Hopkins Homes, specified the Marley Eternit Riven Edgemere for its latest 67 home development in Cambridgeshire. Set on the outskirts of the picturesque town of Soham, the Riven Edgemere offered a natural textured slate roof finish to the variety of stylish houses and apartments on site, complementing the local vernacular.



Project information

Location: Soham

Application: Residential

Product: Riven Edgemere interlocking slates in Smooth Grey

Specifier: Hopkins Homes



Technical toolkit

tools and assets that make design and specification as straightforward as possible



> NBS

A tool to produce instant NBS clauses that meet the recommendations of British Standards and Codes of Practice: marleyeternit.co.uk/specrite



> Dry fix selector

Easy-to-use and comprehensive system finder delivering results from choice of pitch, material type or specific tile type: marleyeternit.co.uk/roofing



> CAD details

Access to over 2,000 CAD drawings illustrating how specific tile and slate details can be formed: marleyeternit.co.uk/cad



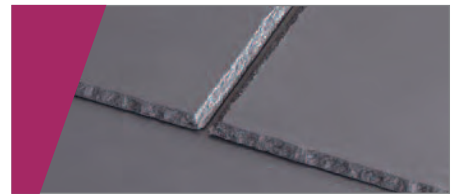
> Tilefix

Tool to create fixing specifications based on the geographical location and building dimensions of specific roofing projects: marleyeternit.co.uk/tilefix



> CPDs

A tool to produce instant NBS clauses that meet the recommendations of British Standards and Codes of Practice: marleyeternit.co.uk/cpd



> Samples

Samples of all fibre cement slates, clay and concrete tiles are available at: marleyeternit.co.uk/samples



> BIM

BIM Space is a set of free to download Building Information Modelling (BIM) objects that provide a standard range of build ups for our fibre cement roof slates, clay plain tiles and facades (EQUITONE, Operal and Cedral): marleyeternit.co.uk/bim



> Fixing instructions & literature

Comprehensive sitework, fixing and installation literature and videos: marleyeternit.co.uk/resources

All current product and technical literature can be downloaded: marleyeternit.co.uk/downloads

Services

Getting our knowledge to you and your project smoothly and efficiently



> Customer services

Marley Eternit is committed to providing outstanding customer care and is staffed by experienced personnel:

Tel 01283 722588 E-mail info@marleyeternit.co.uk

To find your nearest stockist, please visit:

www.marleyeternit.co.uk/stockists

> Technical Advisory Service

Specifiers require prompt, knowledgeable and detailed responses to a vast range of enquiries covering everything from the embodied energy of a typical roof tile, to the different ventilation options available.

Our Technical Advisory Service is staffed by a qualified team with specialist knowledge not only of all Marley Eternit products, but also crucially, how those systems integrate with other roofing components and comply with Building Regulations, Health and Safety, environmental and other critical roofing criteria.

Tel 01283 722588 E-mail info@marleyeternit.co.uk

www.marleyeternit.co.uk/resources

Sustainability and standards

Credits, credentials and clarity of information



> BES 6001

Demonstrating our commitment to sustainable building, all our roofing products are certified under the BES 6001 standard for responsible sourcing and therefore contribute to extra credits under BREEAM and The Code for Sustainable Homes.

Embodied carbon

Embodied carbon figures are available at product level for our entire roofing range. This absolute clarity of environmental information allows our customers to make informed choices.

> BREEAM and the Code for Sustainable Homes

Credits gained from specifying our A-rated products, combined with additional credits from BES 6001 make our products more beneficial to the specifier.

Quality standard

All Marley Eternit's factories in the UK are ISO 9001, 14001 and ISO OHSAS 18001 accredited. They achieve the highest standards in quality, health and safety and the environment.

CE Marking

All of our products covered by an EN Standard carry an appropriate CE Mark. This means that our products meet the required safety standards and have a guaranteed level of quality.



This publication is based on the latest data available at the time of printing. Due to product changes, improvements and other factors, the Company reserves the right to change or withdraw information contained herein without prior notice. For specific applications users should refer to the Technical Advisory Service and relevant Standards and Codes of Practice for guidance. The photography shown in the document should not necessarily be taken as recommendations of good practice. The printing process restricts the exact representation of colours. For true colour reference, please request product samples.

Call 01283 722588
Email info@marleyeternit.co.uk
Or visit www.marleyeternit.co.uk



Marley Eternit Lichfield Road Branston Burton upon Trent DE14 3HD

an **etex** company