

Put Only the Best Between You and the Sun.
The Most Seductive Shade in the World.

markilux
safe timeless beautiful

Designer awnings for patio and balcony







Al fresco living.

Whether you're simply relaxing or having a gathering with family and friends, these are always valuable moments. markilux designer awnings not only provide shade, they also help create new opportunities to enjoy life. From protection on hot days to a perfect ambience, even when the sun has set, markilux awnings allow you to relax outdoors any time of day. Choosing a markilux designer awning is a decision, to opt for the best available quality and design.

markilux



Put only the best between you and the sun. The most seductive shade in the world.

Designer awnings for patio and balcony

markilux “Made in Germany”	6	Cassette Awnings	20	Semi-cassettes, Open Awnings and the Side Screen	44	Awning Systems	54
The markilux quality promise	7	markilux MX-1	24	markilux 1600	46	markilux pergola	56
The markilux system	8	markilux MX-1 Compact	26	markilux 930	48	markilux planet	60
markilux operation and technology ..	10	markilux ES-1	30	markilux 1700	50	markilux syncra	62
markilux covers and colours	12	markilux 6000	32	markilux 790	52	markilux construct	64
markilux awning covers	14	markilux 5010	34			markilux markant	66
markilux awning frame colours	18	markilux 970	36			Options, Extras and Overview	68
		markilux 990	38			Options	70
		markilux 3300	40			Extras	72
		markilux 1710	42			Overview awnings	74
						Overview awning systems	76

Award-winning German Design.

markilux designer awnings “Made in Germany” As a family business in the 4th generation we have been manufacturing awnings that set the highest of standards for almost 50 years. What makes markilux unique is the combination of designer quality awnings and the weaving of our awning covers all being done under one roof, which is why we are truly “Made in Germany” right down to the last detail. Our originality shows when it comes to making living outdoors even more enticing. We don’t stop at good solutions; we look to improve on these solutions every day. This allows us to offer the best to our customers in every respect – a perfect combination of form and function.

markilux designer awnings are characterised by quality, multi-award-winning designs and innovative technology and turn your favourite spot to relax into something extra special. You can take our word for it with our markilux quality promise.

markilux designer awnings have received a multitude of awards:



Design Features

A markilux designer awning isn't just any type of awning; it has the perfect combination of form and function. We achieve this through the interaction between our internal development team and external designers. The result: Multi-award-winning designer products for your home.



Quality

Every detail is important during the production of our designer awnings. High-grade materials and our comprehensive quality management system ensure that each awning will have an extremely long service life. markilux is certified according to the DIN EN ISO 9001 standard and with this we pursue one objective: The satisfaction of our customers.



Function

markilux combines innovative technologies and smart solutions with high-end products. With the variety of accessories available, you can enhance your markilux designer awning to suit your own requirements. The wide range of operating options guarantees you the highest degree of comfort.



Service

Our products, combined with the competent advice of our specialists and their professional installation, make the perfect solution. Our network of qualified specialist retailers guarantees you excellent personal service and that there is always someone at hand to answer any questions you may have.





Customised, Personal and Unique.

There are numerous ways you can customise your designer awning Your markilux designer awning is as unique as you are. With a choice of more than 45 models, 250 fabric patterns and a wide range of accessories you can design an awning to suit your every need. With lighting modules, infrared heaters, smart control technology and other additional functions, markilux awnings can enhance your outdoor experience at any time of day. Your markilux specialist retailer will gladly assist you with their professional advice and suggestions when helping you configure your very own designer awning.

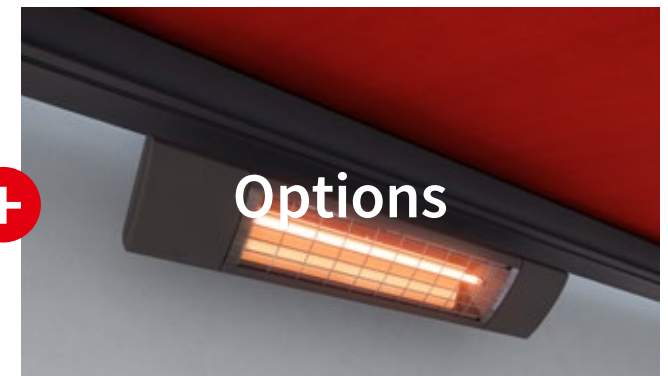
markilux 3D App Visualize and configure your dream awning live on the façade of your own home and experience many of the details in a virtual environment. Simply download it free of charge from your App Store or Google Play Store.



Fabric



Model



Options

Large range of colours and patterns Our textile designers identify current trends from interior design, architecture and choice of colour and turn them into unique awning covers. markilux offers you an extensive selection with more than 250 patterns to choose from.

from page 12

Design and function perfectly combined Every markilux designer combines design, quality and technology into one unique solution. Within our large range of models, there is bound to be one that fulfils your wishes in terms of functionality and matches the ambience of your patio or balcony perfectly.

from page 20

Options and extras Our optional lighting solutions, comfortable operating technology and additional extras such as infrared heaters mean that we can build your system to your desired specification. We aim to make being outdoors a pleasure for you even when the sun isn't shining.

from page 68

markilux



Control at the touch of a button, or even automatically.

Ease of operation that meets the highest demands and any weather conditions The choice is yours: manual operation (spring-assisted on request), hard-wired motor or radio-controlled motor with remote control, are all possible on most models. You can even operate the system while you are away via smartphone or tablet. Better yet, why not put your feet up and add sun, wind and rain sensors to provide automatic intelligent control of your markilux designer awning or blind? Your markilux specialist retailer is at your disposal, should you have any questions regarding operating your markilux awning, and will provide you with details on why awning motors with the markilux silentec technology are more popular than ever.

Arm Technology Exceptionally long service life, quiet and meticulously designed to give a taut, well tensioned cover.



Bionic tendon markilux has developed the bionic tendon from high-tech fibres, and used nature as its inspiration to create optimum power transference to the front profile as well as a friction-free and virtually noiseless folding motion of the arms. The safety and durability of the arms also impressed the experts of the Fraunhofer institute when it achieved more than 50,000 arm flexions in a series of tests.



Twin chain The twin chain has been on the market for decades and has proven itself in all types of weather: the twin round steel link chain, lies protected in the folding arm.



Gas piston The Gas Piston is an eye-catcher in stainless steel with the latest technology to match, the gas piston ensures optimum cover tension in any phase of extension.

markilux



The background of the slide is a soft-focus photograph. In the upper left corner, a portion of a white awning frame is visible, extending diagonally across the frame. The rest of the image is filled with out-of-focus greenery, including trees and bushes, which creates a bokeh effect with bright green and yellow highlights. The overall tone is bright and natural.

markilux Awning Covers and Awning Frame Colours



Market-leading fabrics, woven in house.

Our unique covers help to create a special ambience for you The colour and quality of the awning fabric is what helps make the ambience on your patio something special. Depending on the brightness and hue, colour distinction, patterns and textures help create that unique special effect. As a leading manufacturer of high-grade awning covers with almost 100 years of experience in the manufacturing of textiles, markilux offers an unparalleled variety. The markilux textile design team is constantly developing new patterns in line with the latest trends, which are characterised by their timeless nature. Within the 250+ patterns in thematically coordinated colour families, you are certain to find your very own unique fabric.



visutex

markilux visutex Collection 50/4/me Discover the subtle, balanced jaquard effect and powerful colours of the fabrics with this stunningly textured weaving technique. These unique awning fabrics are available exclusively and without any surcharge only from markilux.

Functionality can be so beautiful.

Awning covers “Made in Germany” We manufacture awning covers that maintain their shape and colour for years, and offer your home that special something. These high-tech awning fabrics are manufactured at the markilux production facility in Emsdetten, Germany in accordance with strict quality standards. The yarns are dyed using a process we ourselves developed and show their effect in up to 16 million distinctive colours with outstanding luminosity and colour intensity. This has resulted in functional textiles, which have set exceptionally high standards in terms of quality, UV protection, ease of care and appearance. markilux awning covers are available in the qualities “sunsilk” or “sunvas” or as fabrics in our markilux specials collection serving specific requirements.

sunsilk



Brilliant luminosity. Silky smooth surface. sunsilk awning covers impress with their unique luminosity.

sunvas



Soft glow. Textile-like to the touch. sunvas awning covers score with their textile character and natural appearance.

specials



Textiles for special requirements Semi-transparent, heat-reflecting, permeable, highly water resistant and flame-retardant materials for blinds and awnings extend the range of the overall markilux collection.



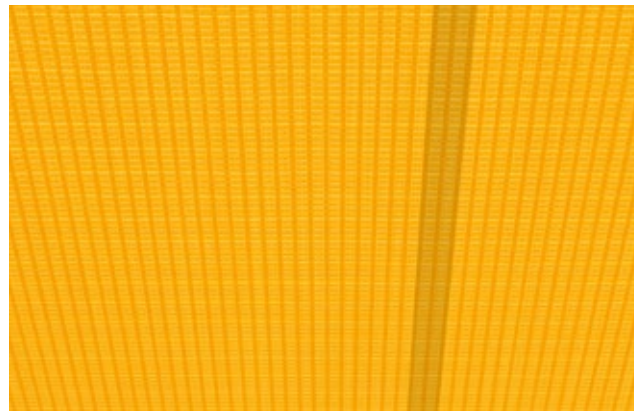
markilux awning covers During the production of our awning fabrics we leave nothing to chance. We produce our fabrics sunsilk and sunvas exclusively in Germany using the most modern weaving technology. We add a final finishing flourish to the fabric using our snc coating, a special formula developed in house that creates a self-cleaning effect. This finish gives our awning covers incredible longevity and resistance against rain, light and fluctuations in temperature. This is certified according to Oeko-Tex standard 100, which also guarantees they are free from harmful dyes or chemicals.

With an Ultraviolet Protection Factor (UPF) of 50+, all markilux awning covers made from sunsilk or sunvas offer the highest possible degree of UV protection. This allows you to enjoy sunny days for longer, without risk.*

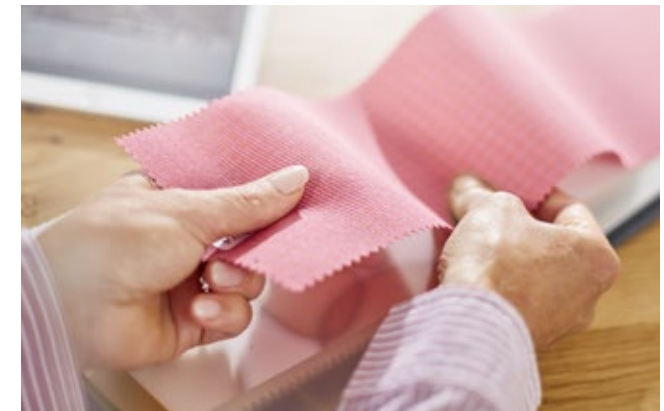
He who seeks shall find The most beautiful fabric for your designer awning can be found amongst the 250+ cover patterns at the showroom of your markilux specialist dealer or at markilux.com



Self-cleaning snc effect Water droplets pick up dirt particles and run off the awning cover (the awning must be set at a pitch of at least 14 degrees). This gives you the peace of mind that your fabric will retain its colour and vibrancy for years without you having to lift a finger.



Bonded awning covers Panel joints bonded together ultrasonically ensure a consistent, unobtrusive appearance. Its excellent resistance to water, light and fluctuations in temperature ensures that the life expectancy of the cover is extended substantially.



Light, weather and colour resistance High-tech yarns dyed right to the core and the high-grade snc finish developed in house guarantee the most stunning shade in which to relax and unwind for many years to come.

* Protect your skin with care! Do not spend longer periods outside without applying sun cream. The UPF afforded by the awning applies only to direct sunlight. It offers no protection against reflected sunlight (e.g. from water).



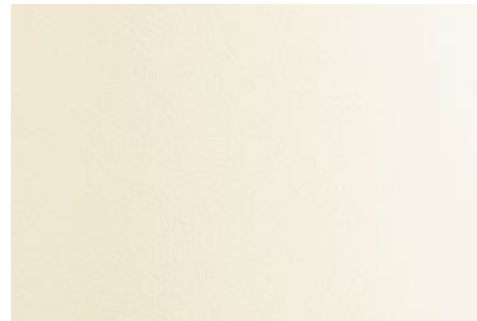
Turn your imagination into reality with our range of stunning frame colours.

Choose from our extensive collection of colours Choose the awning frame colour to complement the colour of the fabric and configure your own amazing design. From a variety of shades of white through to the elegant shades of anthracite, a wide range of colours are available to you. Do you want a particular colour scheme? No problem! We will gladly manufacture your dream awning in your own personal shade. Our high-grade powder coating finish is guaranteed for any awning colour you choose.



Traffic white

RAL 9016



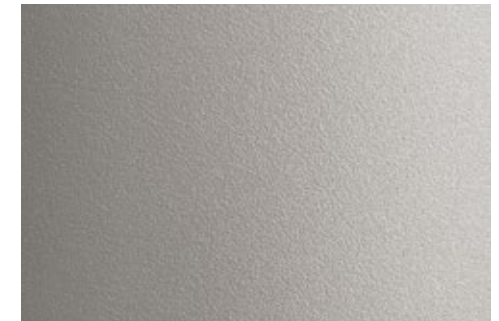
Off-white textured finish

5233



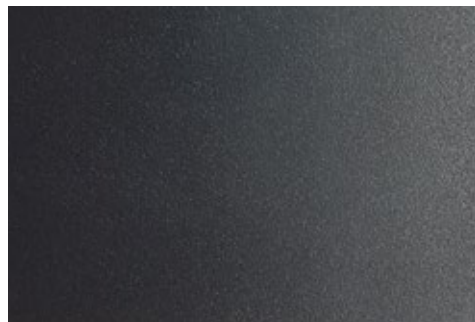
Metallic aluminium

RAL 9006



Stone grey metallic

5215



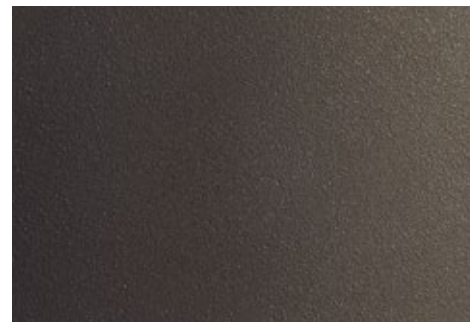
Anthracite metallic

5204



Grey brown

RAL 8019



Havana brown textured finish

5229



RAL colour of your choice

© RAL Bonn 2018



A man with grey hair and a beard, wearing a grey t-shirt and light-colored shorts, is sitting on a dark wicker chair. He is holding a white tablet computer in his hands and looking towards the camera with a slight smile. The scene is outdoors, under a white cassette awning with horizontal slats. The background shows a white wall and a clear blue sky. The overall atmosphere is bright and sunny.

markilux Cassette Awnings

markilux Cassette Awnings

Elegant all-round protection With a markilux cassette awning you're protected whatever the weather. When the awning is retracted, the cassette completely encompasses the awning cover and provides the best possible protection from wind and weather.

markilux MX-1 | The Ultimate One



markilux MX-1 Compact | The "Petite" Ultimate One



markilux 970 | The Linear One



markilux 990 | The Slim One



markilux ES-1 | The Unique One



markilux 6000 | The Individual One



markilux 5010 | The Universal One



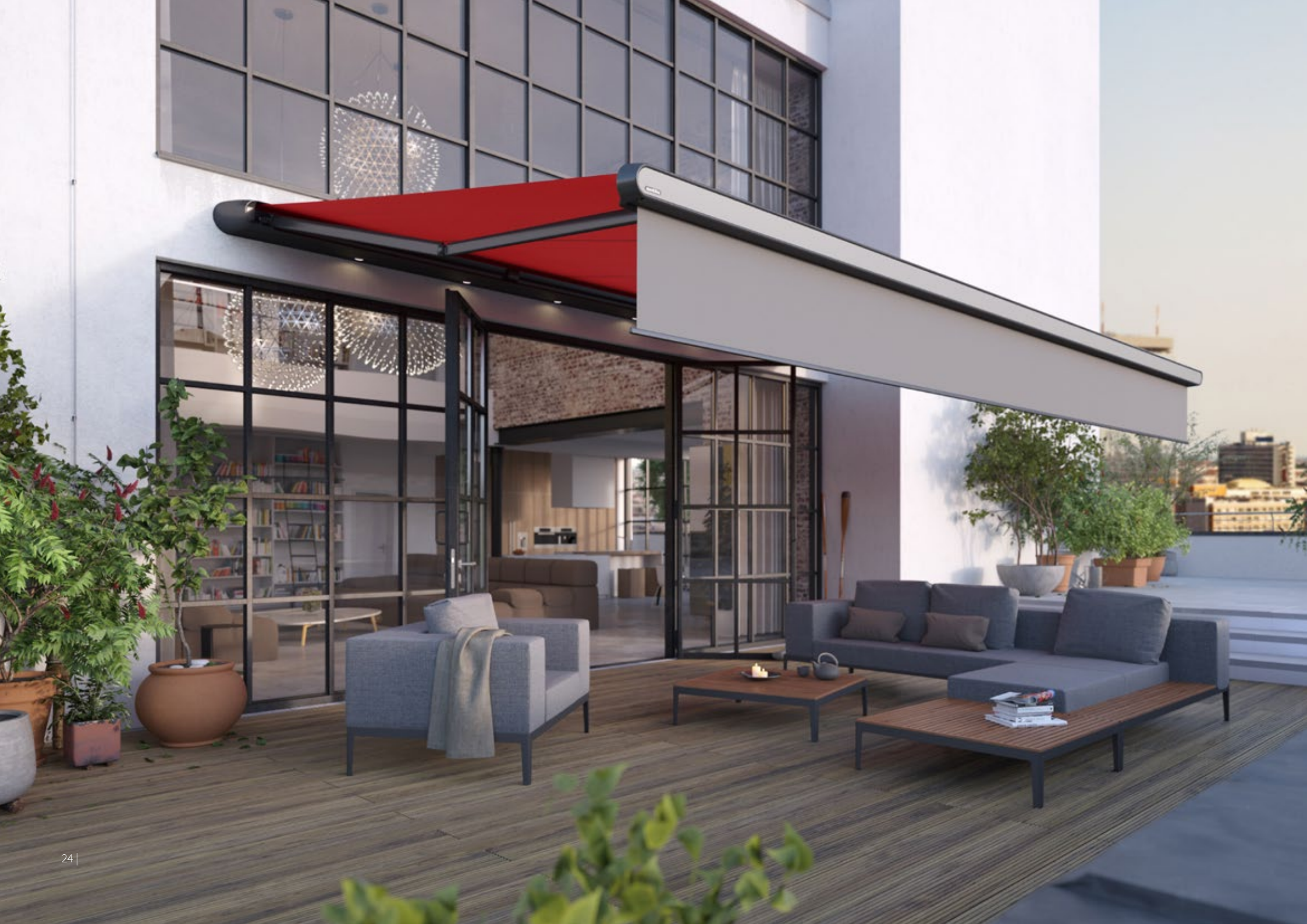
markilux 3300 | The Practical One



markilux 1710 | The Classic One



markilux



The technology of tomorrow.

markilux MX-1 | The Ultimate One Even at first glance, the markilux MX-1 makes an immediate impact with its unique mix of shape and functionality. Retracted, the tapered full cassette with a depth of 62 cm makes a deep impression on the observer as a weather-proof canopy that protects your awning from the effects of the weather. When extended the markilux MX-1 shows its true magnitude. This, the ultimate in designer awnings, is a pioneer due to the numerous technological innovations it incorporates and its multi-award winning design. The markilux MX-1 creates an unparalleled atmosphere at any time of the day, which will charm you again and again, today and in the future.

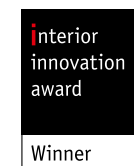


LED spotlights in the canopy Highlight specific areas and enjoy the evening hours under the awning in a delightful atmosphere. Discover further lighting and design options on page 28.

markilux Shadeplus The additional awning cover in the front profile protects against low-lying sun and prying eyes at the touch of a button.



- Dimensions** max. 700 cm × 437 cm,
overall depth approx. 62 cm
- Folding arms** Bionic tendon
- Options** Shadeplus,
a broad range of light
and colour options,
page 28



reddot design award



Delivering beautiful protection, any time of year.

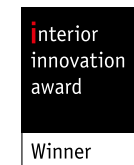
markilux MX-1 Compact | The “Petite” Ultimate One The “petite” markilux MX-1 with all the technological innovations and with the variety of features typical of markilux. It also offers you spectacular ambient lighting, brilliant LED options in the front profile as well as every possibility of influencing the colour design. The “petite” ultimate one makes your favourite spot in the garden particularly enticing. The markilux MX-1 Compact enhances the appearance of buildings with a modern, minimalist architectural design.



A personal statement on any façade The “petite” ultimate markilux MX-1 Compact with an overall depth of 38 cm is an eye-catcher as well as solar and wet weather protection all rolled into one.



- Dimensions** max. 700 cm × 415 cm,
overall depth approx. 38 cm
- Folding arms** Bionic tendon
- Options** Shadeplus,
a broad range of light
and colour options,
page 28



reddot design award

markilux MX-1 / MX-1 compact – options



traffic white

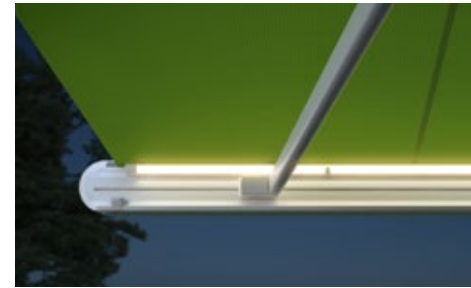
light ivory

yellow

red

green

LED Ambient lighting An impressive eye-catcher in the evening hours. The lit-up front profile is available in five contrasting colours and can be dimmed.



LED Line in the front profile Gives uniform lighting and a pleasant ambience after sunset.



LED spotlights in the front profile A brilliant lighting effect converts the room under the awning into an oasis of well-being in the evening.



Colour combinations Cassette and front panel are available in different colours, which can be combined freely.



LED spotlights in the front canopy Let the evening come ... And with it the time of captivating lighting effects, optionally directed downwards and/or upwards. Available only in the markilux MX-1.

markilux Shadeplus At just the touch of a button, the optional protection from glare and prying eyes creates an enviable, private room outdoors. As standard, the Shadeplus is equipped with a radio-controlled motor and comes supplied with a markilux remote control.

Allow yourself to be inspired Whosoever makes the effort to discover the variety of options at markilux will love them. Design your own personal awning with a markilux specialist retailer near you or at [markilux.com](https://www.markilux.com)

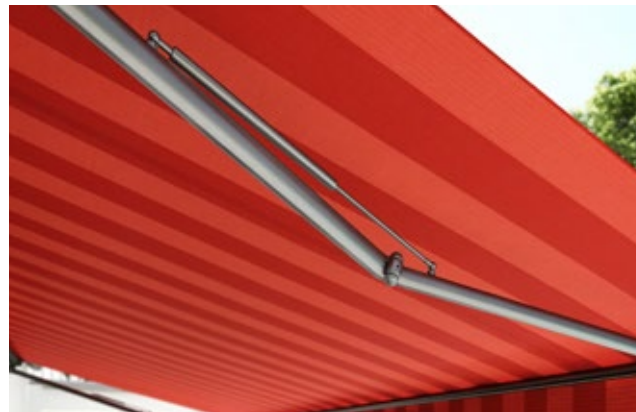


The one that withstands the elements.

markilux ES-1 | The Unique One The world's only designer awning made of marine grade stainless steel is a design piece to fall in love with. The markilux ES-1 is a perfect combination of material, shape and function. This makes this awning a visual highlight, which will lose none of its magnificence even after many years, as the corrosion-resistant stainless steel will not fail you in even the stormiest of weather. With the markilux ES-1 you own a stylish treasure that brings you a great deal of pleasure and invites you to enjoy your outdoor life with sophistication.



Valance This classic extension of the cover suspended from the front profile gives your stainless steel treasure a classy touch. Available in different shapes and manufactured to match the pattern of the awning cover.



Stainless steel gas pistons With impressive power, the perfectly matched gas piston technology of the folding arms is a visual highlight and ensures optimum cover tension – even when the awning is not extended completely.





- Dimensions** max. 650 cm × 300 cm
max. 600 cm × 350 cm
- Folding arm** gas piston
- Options** valance



reddot design award



Germany's Top Model.

markilux 6000 | The Individual One A designer awning with many faces – each one more beautiful than the next. Create your own personal and unique model from a wide range of awning frame colours, decorative elements and available accessories. With its remarkable dimensions and technical values, the markilux 6000 makes a lasting impression. It also cuts a dashing figure as well. Invite Germany's top model into your home.



LED spotlights in the front profile More than a decorative highlight. The markilux 6000 lights up your favourite spot in an elegant, flexible and energy-efficient manner, just the way you want it.

markilux Shadeplus The vertical shading in the front profile adds the finishing touch and provides personal protection from the sun and prying eyes. On request the Shadeplus can come with a hard-wired or radio-controlled motor.



Variable decorative elements Whether you choose the end cap insert in stainless steel mesh, the end cap trim in a chrome finish or all deliberately uniform in the awning colour of your choice – you can design your very own personalised top model by markilux.

- Dimensions** max. 700 cm × 400 cm
- Folding arm** Bionic tendon
- Options** LED spotlights in the front profile, end cap insert in stainless steel mesh, frame in polished chrome, Shadeplus, valance, coupled unit



reddot design award

Enjoy happy hour, 24 hours a day.

markilux 5010 | The Universal One The markilux 5010 effortlessly extends, either at the touch of a button or via smart control through an app, this awning will be a hit with all the family. On top of that, as a coupled unit with up to three awnings installed next to one another, friends and guests will also be able to find a cosy spot in the generous shade this awning offers. This multi-talent encourages relaxed get togethers and turns any hour spent outdoors into a happy hour.



Polished chrome fittings Optionally available as an eye-catcher – and without surcharge, it's so friendly to your wallet: the chrome-look end caps fitted to the front profile.

markilux Shadeplus Enjoy relaxing on the patio even when the sun is low.





Dimensions max. 700 cm × 400 cm

Folding arm double chain-link arms,
optional: Bionic tendon

Options polished chrome fittings,
Shadeplus, valance,
coupled unit



Urban chic for a clean, sleek appearance.

markilux 970 | The Linear One This awning exudes urban lifestyle with confidence. The neat and slim appearance of the markilux 970 makes it the ideal model for those who love the simplicity of elegance. This svelte designer awning wraps your patio in comforting light and makes it a stylish place of retreat where your guests, too, will completely feel at home. The numerous styling options and the variable designs of the front panel lighting lend that individual something to the markilux 970. All in all, because of its clean lines and straightforward design, this awning is an all round performer.



LED spotlights under the cassette During the twilight and evening hours they ensure a stylish ambience.



markilux Shadeplus For more protection from prying eyes and glare: The optional vertical blind in the front profile will captivate you.



Free colour choice The colours of the cassette and front panel can be freely combined. The front panel is also available in another six contrasting colours.

Dimensions max. 600 cm × 300 cm
max. 500 cm × 350 cm

Folding arm Bionic tendon

Options LED spotlights under the cassette, selectable colour combination, coloured front profiles, Shadeplus





Create a carefree ambience.

markilux 990 | The Slim One Small, but impressive! You will be surprised how much technological sophistication there is in this 125mm flat cassette. The compact construction with the U-shaped front profile in which the folding arms and awning cover disappear, and an impressive angle of pitch of up to 70 degrees when ceiling mounted make this awning best suited for smaller patios and balconies. Thanks to these advantages you can easily spend many hours relaxing in the shade.



End caps in polished chrome Add that certain extra touch to your markilux 990.



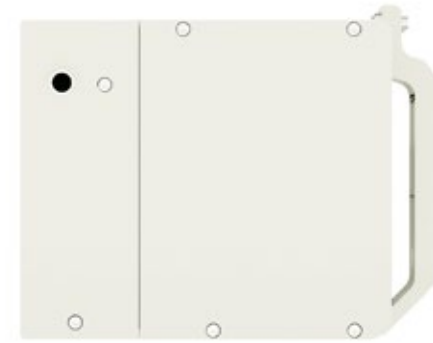
Wall sealing profile The slim aluminium profile in the awning colour closes the gap between the awning and the wall, allowing rain to be discreetly drained off the awning.

- Dimensions** max. 500 cm × 300 cm
- Folding arm** double chain-link arms, optional: Bionic tendon
- Options** end caps in polished chrome, valance



High Impact. Low Maintenance.

markilux 3300 | The Practical One Can an awning be merged visually into the architecture of a house? The markilux 3300 proves that it can. Depending on the structural situation, this designer awning, with its smooth front profile disappears completely into a wall or precisely into a recess. When extended, it comes into its own with dimensions of up to 7 by 4 metres. And you can shade even larger areas by coupling up to three single awnings together. Discover how practical the markilux 3300 can be, and make this awning a big hit in your home.



Angular design By virtue of exact recess installation in the ceiling or wall, the markilux 3300 blends perfectly with its structural surroundings.

Dimensions max. 700 cm × 400 cm

Folding arm Bionic tendon

Options valance,
coupled unit



Slim, compact shading all year round.

markilux 1710 | The Classic One The markilux 1710 interprets the classic awning shape in a contemporary manner. The visible round torque bar merges organically with the round cassette to form an elegant design feature. Due to its shape and the timelessly beautiful decorative elements made from polished chrome, the markilux 1710 suits almost any patio.



Polished chrome fittings Side caps matching the awning colour or deliberately emphasised in fine polished chrome. This awning can simply wear anything.



markilux 1710 stretch For great performance on narrow patios, balconies and recesses: Thanks to the two crossover arms even awnings with a narrow width can extend considerably further.

Dimensions max. 700 cm × 350 cm

Folding arm Bionic tendon

Options polished chrome fittings, valance, coupled unit, stretch



reddot design award





Semi-cassettes, Open Awnings and the Side Screen



Perfect functionality meets award winning design.

markilux 1600 | The Elegant One This awning was awarded the IF product design award for its harmonious, semi-circular design. As a semi-cassette awning, the markilux 1600 is open to the bottom and still looks unique when it's fully extended. The top cover profile adapts itself to the angle of the pitch of the awning and closes completely flush with the front profile when retracted, which protects the cover safely from rain.



markilux Shadeplus Simply block out low-lying sun and prying eyes with the additional awning cover in the front profile of the markilux 1600.



Polished chrome fittings embellish the front profile and underline the design of your semi-cassette awning in a brilliant manner.

markilux 1650 The model variant with swivelling dimmable LED spotlights in the front profile guarantees a pleasant ambience in the evening.

- Dimensions** max. 710 cm × 400 cm
- Folding arm** twin chain, optional: Bionic tendon
- Options** LED spotlights, end caps in polished chrome, Shadeplus, valance, coupled unit, stretch





Perfect for balconies or eaves.

markilux 930 | The Mobile One This awning moves differently from the rest, because as you retract the markilux 930, the awning pivots into a horizontal position and disappears below the soffit. When extended, the angle of the pitch can be up to 80 degrees – so if required, the awning can pivot almost to the vertical. The markilux 930 is perfect for all balconies and eaves that require no additional protection of the awning or awning cover. This awning allows you to enjoy being outside in the evening even when the sun is low in the sky.



Pivoting mechanism The only 122 mm high cassette disappears discreetly under the soffit, when retracted. Only during the extension process does the markilux 930 pivot to your desired angle.

Valance This additional decorative finish to the front profile lends the perfect balcony awning individual charm.



Dimensions max. 500 cm × 300 cm

Folding arm twin chain

Options valance

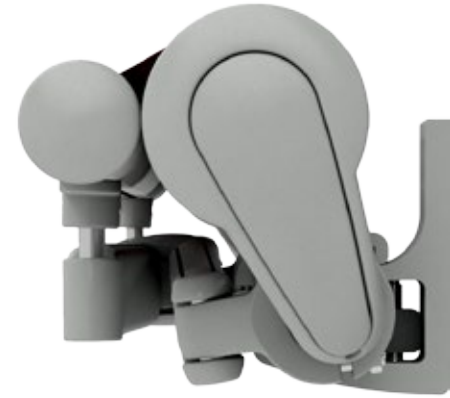


reddot design award



Open your mind to life outdoors.

markilux 1700 | The Open One Whenever you would like to enjoy life outdoors, the open design of the markilux 1700 will create comfortable shading on your patio or balcony. Its organic design is elegant and timeless, and thanks to the stable support tube, it opens up the possibility to connect up to three awnings together, allowing the possibility to shade large areas without any problems.



markilux 1700 stretch Available for narrow recesses and openings, with two crossover folding arms providing greater projection than width.

Polished chrome fittings Both the open markilux 1700 and its closed counterpart, the markilux 1710, can be embellished with polished end caps and inserts on request.

- Dimensions** max. 700 cm × 400 cm
- Folding arm** Bionic tendon
- Options** polished chrome fittings, valance, coupled unit, stretch



German
Design Award

NOMINEE



reddot design award



Always by your side.

markilux 790 | The Upright One There are few seating areas outdoors that are protected on all sides from sun wind and prying eyes. Therefore, the slim markilux side screen simply makes your life on balcony or patio more comfortable and enticing. The robust compact cassette can be mounted easily and it can be extended with one movement. The markilux 790 is always by your side when you need it and whenever you feel like making use of its benefits.

Dimensions extension: max. 450 cm
height: 90 cm – 250 cm

Options sloping top edge,
mobilfix,
various installation
bracket options



A broad range of brackets For any situation markilux has an apt installation option.



mobilfix The moving support post with granite baseplate stands secure, wherever you want it to.



Sloping top edge The cover is available with a sloping top edge which can be adapted to the pitch of your markilux awning. It creates a beautiful, enclosed and protected area free from prying eyes and the glare of the sun.



A man with short brown hair, wearing a light-colored t-shirt, is smiling and holding a slice of watermelon. He is standing under a white awning structure. The background is slightly blurred, showing a building and some greenery.

markilux
Awning Systems



Here's to getting together, whatever the weather.

markilux pergola The markilux pergola ranks top when it comes to solar and wet weather protection. The awning system on slender posts and lateral guide tracks provides generous shading with an extension of up to 6 metres. The markilux pergola defies wind and weather up to Beaufort 6 (wind resistance class 3). You can make this awning your own with markilux's Shadeplus, tracfix, an array of lighting options and post variants. No matter how strong the sun shines or the wind blows, with your markilux pergola you can enjoy life outdoors at any time.

Dimensions max. 600 cm × 450 cm
max. 500 cm × 600 cm

Options tracfix, Shadeplus and a number of other comfort and design options, page 58



Closed full cassette The cover disappears completely in the cassette and is ideally protected. If anything can be more beautiful than the appearance of the awning, it is the way the markilux pergola functions faultlessly.



markilux sundrive An integrated solar panel drives the Shadeplus motor (optional). When the awning is extended the front profile and the guide tracks match one another perfectly.

Coupled unit For all who want even more shade: Up to five single units can be connected to one another.

markilux Shadeplus The additional vertical blind integrated into the front profile simply blocks out low-lying sun and the glances of inquisitive neighbours.



markilux pergola – options



markilux tracfix One of markilux's many sophisticated features: the lateral cover guidance without a gap between the cover and guide track. For a more beautiful overall appearance and better wind stability.



Adjustable post For better water drainage, the front post of the markilux pergola can be lowered by up to 40 cm in no time at all.



LED line Light for reading or informal get-togethers, optionally in the guide tracks and/or in the cover support tube, turns your night into day.



Square support / baseplate covers meets the demand for clear, angular shapes and a clean finish at the base of the front support posts.



Stabilisation boxes Give your markilux pergola reliable stability, when fitting the front posts to foundations is not possible or desired.



Stainless steel crank Bring the adjustable posts to the desired height in no time at all.



LED spotlights attached to the cover support tube These spotlights will provide perfect contrast lighting in the evening hours, pivoting and dimmable.



markilux Shadeplus The vertical protection against sun and prying eyes – up to 230 cm in height – creates a private room outdoors with its own special ambience.



The planet really does revolve around you.

markilux planet The markilux planet is a parasol and awning in one. It's an eye-catcher that provides perfect shading for your room outdoors. This awning-cum-parasol protects you from solar radiation with exceptional reliability; it's extremely sturdy, yet mobile. With the easy to use lever in the flex variant, you can simply rotate it by up to 335°, so you can have shade wherever it is required. The slim post carries the selected markilux designer awning with ease and the combination of functionality and design is impressive.

Dimensions depending on awning model
max. 600/610 cm × 300 cm
max. 500/510 cm × 350 cm

Folding arm depends on model

Options depending on awning model,
flex rotates up to 335 degrees



flex option The markilux planet can be rotated by up to 335° and positioned wherever you need shading. The Easy-go lever permits easy rotation, locking and unlocking of the markilux planet flex.

markilux Shadeplus This versatile protection against low-lying sun, inquisitive glances and glare in the front profile allows you to enjoy the late afternoon sun without having to worry about prying eyes.



Allow them to stand on their own two feet.

markilux syncra The markilux syncra promises generous shading right where you need it. As a single unit up to 60 m²; as a coupled unit even larger areas are no problem. This free-standing awning literally stands on its own two feet, two round or square posts and a massive cross beam ensure reliable stability. Depending on the requirement, one or two folding arm awnings or markilux pergolas can be attached to it. This awning system is either firmly anchored to the ground (“fix”) or installed using stabilisation boxes (“flex”). No matter which variant you choose, you can count on the markilux syncra.

Dimensions depending on the model up to 60 m², as a coupled unit even larger

Folding arm depends on the model

Options depending on the awning, uno (only one awning/pergola), flex (with stabilisation boxes), coupled unit



markilux syncra uno Two feet. One awning. No problem. The markilux syncra uno proves itself a stable base for one “wing”.



markilux syncra pergola With the additional posts at the front and the lateral cover guidance, this option offers particular advantages in terms of size and wind stability.



markilux syncra flex Stabilisation boxes permit a set-up without concrete foundations at the installation site.



When you need just that little bit more.

markilux construct There are situations where a standard model is not enough to meet your special requirements. In these situations system solutions are required. The frame system markilux construct is extremely versatile and flexible. Different modules unite with different awnings to create a veritable awning landscape. You don't have to make any compromises when it comes to size, and the range of available accessories is impressive. You can choose between round and angular posts. It is almost impossible to describe the markilux construct: you just simply have to experience it in your own garden.

Dimensions almost unlimited thanks to modular and flexible frame system

Options depending on awning model, round / angular posts, triangular acrylic windows or covers for the gable ends, baseplate covers



Designer awnings to your own precise specification

Different conservatory and folding arm awnings are possible and can be combined with vertical blinds or side screens according to your wishes.





Make the rain take a detour.

markilux markant The free-standing shading system markilux markant is protection against sun, wind and rain, that can be tailored to your precise requirements. The awnings, integrated into the frame, lend the system a textile character, their fabrics making it possible to create the pleasant colour ambience you have in mind.

The markant offers protection, security, freedom, outstanding looks and comfort in a purist design.



On request – that little bit more From the atmosphere-creating lighting right down to the heaters, the markilux markant fulfils all your wishes as far as the creation of an al fresco oasis of relaxation goes.



Just what you need – regardless of the weather Ideal lifestyle pleasure on the patio or in the garden – in just about any weather and at any time of the year.

Dimensions Max. post separation up to 600 cm × 600 cm with two independently functioning awnings, as a single unit up to 300 cm × 600 cm, overall height 260 cm, other heights are possible

Options LED lighting, infrared heaters, vertical cassette blinds



Stops rain and increases privacy Prefabricated openings in the cover allow rainwater to drain away to the ground through the corner posts. The markilux 776 can be integrated seamlessly into the frame shielding those inside from wind and inquisitive glances.

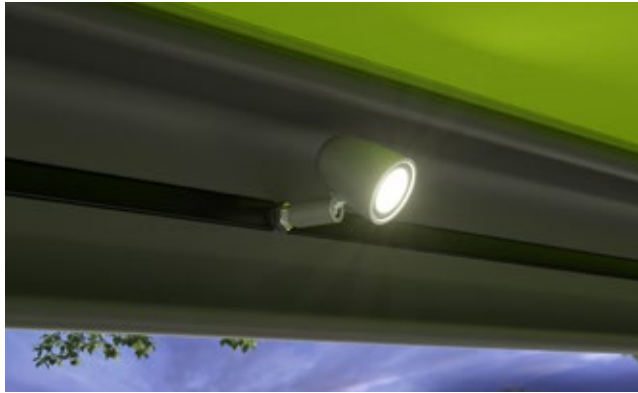
Flexible in both form and function As stand-alone unit or integrated into the existing architecture, the markilux markant makes a big impression in any situation. Detailed information about the markilux markant is available from your markilux specialist dealer or at markilux.com





Options, Extras and Overview

Options – variations in specification according to the model.



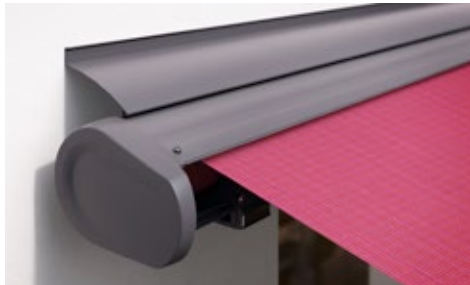
LED lighting Suspended from the cassette, on the wall or in the front profile: LED spotlights that can be pivoted and dimmed create a lovely atmosphere on your patio in the evening.



stretch The perfect solution for narrow patios, recesses or balconies: thanks to the two crossover arms even awnings with a narrow width can extend further.



Valance The short, decorative piece of fabric suspended from the front profile lends your awning a classic look. Different valance shapes are available.



Wall sealing profile The slim aluminium profile in the awning colour closes the gap between the awning and the wall, allowing the rain to be discreetly drained off the awning.



Polished chrome fittings Stylish end caps and fittings in a polished chrome finish add a noble look to your awning.



Colour variants and combinations Cassettes and front profile panels are available in attractive colours and can be combined at will.



Coupled units Connecting two or more awnings together and operating them simultaneously offers even more shade. In folding-arm awnings a special roller blind in the centre covers the gap between the two awnings.

markilux Shadeplus Simply block out the glare from a low-lying sun and the glances of inquisitive neighbours and capture the warmth of the day in the evening. The additional awning cover is lowered vertically downwards from the front profile to create a wonderfully private room outdoors. Depending on the model, it is also available with a hard-wired motor or with remote control.

It is impossible not to be enthusiastic The numerous markilux options available set new standards for the stylish shading of your favourite spot in the garden. For complete information and competent advice speak to your markilux specialist dealer or go to [markilux.com](https://www.markilux.com)



Accessories – light, warmth and ease of operation make living outdoors truly relaxing.



markilux LED Spotline Turn night into day. The elegant light bar in a powder-coated aluminium housing, that can be fitted almost anywhere. The LED spotlights can be tilted and swivelled. Available in two sizes: 180 cm with 3 spotlights and 300 cm with 5 spotlights.



markilux infrared heater Feel the warmth in an instant and enjoy the evening outside for even longer. In a protected housing. Energy efficient and with a long service life. In 2000 Watt and 2500 Watt versions, dimmable in three steps.



markilux sun and wind sensor Depending on the current weather situation, this intelligent control system will extend and retract your awning automatically.



markilux sun sensor Intelligent control of your awning depending on the ambient solar light intensity. Independent of the mains thanks to solar cell technology.



markilux rain sensor The awning retracts automatically in the case of precipitation by virtue of this intelligent control mechanism, which protects the awning cover.



markilux vibrabox Intelligent, sensitive and independent of the mains. The vibrabox is an inertia sensor and depending on wind load an awning driven by radio-controlled motor will be retracted automatically to protect it.

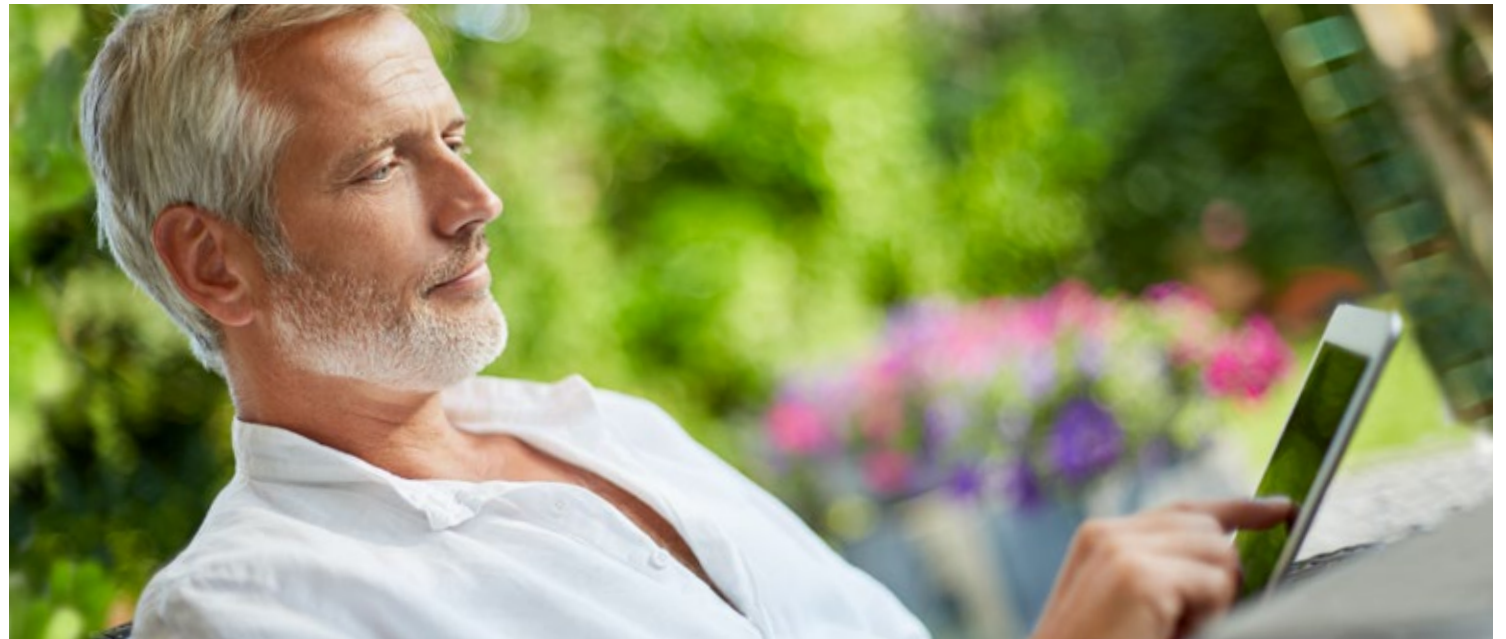
Design your very own outdoors markilux offers the pinnacle in outdoor living comfort. Your markilux specialist dealer can advise you expertly regarding the options available to you or alternatively go to markilux.com



silentec motor Outrageously quiet. Permanently reduces the noise the motor makes when extending and retracting the awning. Availability depends on model and dimensions.

markilux remote control Comfort can be so easy. Shade, light and warmth at the touch of a button.

Smart control Arrange your own personal patio atmosphere by controlling the awning, the lighting, heating and many more accessories from the comfort of your smartphone or tablet – whether you are relaxing on your patio or away from home.



markilux Designer Awnings

markilux MX-1
The Ultimate One



markilux MX-1 Compact
The "Petite" Ultimate One



markilux ES-1
The Unique One



markilux 6000
The Individual One



markilux 5010
The Universal One



markilux 970
The Linear One



Max. width × projection	700 × 437 cm	700 × 415 cm	650 × 300 cm 600 × 350 cm	700 × 400 cm	700 × 400 cm	600 × 300 cm 500 × 350 cm
Operation type optional	Radio-controlled motor* silentec motor	Radio-controlled motor* silentec motor	Radio-controlled motor*	Manual operation servo manual operation hard-wired motor silentec motor radio-controlled motor*	Manual operation servo manual operation hard-wired motor silentec motor radio-controlled motor*	Manual operation servo manual operation hard-wired motor radio-controlled motor*
Arm technology optional	Bionic tendon	Bionic tendon	Gas piston	Bionic tendon	Twin chain bionic tendon	Bionic tendon
Fixture optional	Face fixture	Face fixture	Face / Top / Eaves	Face / Top / Eaves wall sealing profile	Face / Top / Eaves wall sealing profile	Face / Top / Eaves reveal
Optional accessories **	LED line in front profile LED spots in front profile LED ambient lighting LED spots in the canopy selectable colour combination shadeplus / drop valance valance	LED line in front profile LED spots in front profile LED ambient lighting selectable colour combination shadeplus / drop valance valance	valance	LED spots in front profile mirror in stainless steel mesh frame in polished chrome shadeplus / drop valance valance coupled unit	End caps front profile in polished chrome shadeplus valance coupled unit	LED spots under cassette selectable colour combination coloured front profiles shadeplus / drop valance
	Page 24	Page 26	Page 30	Page 32	Page 34	Page 36

markilux 990
The Slim One



500 × 300 cm

markilux 3300
The Practical One



700 × 400 cm

markilux 1710
The Classic One



700 × 350 cm

markilux 1600
The Elegant One



710 × 400 cm

markilux 930
The Mobile One



500 × 300 cm

markilux 1700
The Open One



700 × 400 cm

markilux 790
The Upright One



Extension: max. 450 cm
Height: 90 – 250 cm

Manual operation	Manual operation	Manual operation	Manual operation	Manual operation	Manual operation	Manual operation
servo manual operation	servo manual operation	servo manual operation	servo manual operation	servo manual operation	servo manual operation	servo manual operation
hard-wired motor	hard-wired motor	hard-wired motor	hard-wired motor	hard-wired motor	hard-wired motor	hard-wired motor
radio-controlled motor*	silentec motor	radio-controlled motor*	radio-controlled motor*	radio-controlled motor*	radio-controlled motor*	radio-controlled motor*
	radio-controlled motor*					
Twin chain	Bionic tendon	Bionic tendon	Twin chain	Twin chain	Bionic tendon	—
bionic tendon			bionic tendon			
Face / Top / Eaves	Face / Top / Eaves	Face / Top / Eaves	Face / Top / Eaves	Face / Top	Face / Top / Eaves	Face fixture
wall sealing profile	wall sealing profile	wall sealing profile	wall sealing profile			reveal
	reveal					
end caps in polished chrome	valance	polished chrome end caps	LED spots in front profile	valance	polished chrome end caps	angled top edge
valance	coupled unit	valance	(markilux 1650)		valance	mobilfix
		coupled unit	end caps in polished chrome		coupled unit	
		stretch	shadeplus / drop valance		stretch	
			valance			
			coupled unit			
			stretch			

Page 38

Page 40

Page 42

Page 46

Page 48

Page 50

Page 52

markilux Awning Systems

markilux pergola



markilux planet



markilux syncra



markilux construct



markilux markant



Max. width × projection	600 × 450 cm 500 × 600 cm	600/610 × 300 cm 500/510 × 350 cm	up to 60 m² depending on awning model	almost unlimited	600 × 600 cm (2 fields) 300 × 600 cm (1 field)
Awning System	Pergola cover guidance by way of lateral guide tracks on slim posts	Awning parasol with one markilux designer awning as desired	Awning stand system with two round / angular posts and one / two markilux designer awnings or pergolas as desired	Frame system modular and flexible,	Textile weather protection free-standing, purist in design, on four posts with integrated designer awning(s)
Operation type optional	Motor silentec motor radio-controlled motor*	depending on awning model	depending on awning model	depending on awning model	Radio-controlled motor*
Arm technology	—	depending on awning model	depending on awning model	depending on awning model	—
Fixture type	to the wall / ceiling wall sealing profile	free-standing on concrete footings	free-standing on concrete footings or stabilisation boxes	free-standing on concrete footings	free-standing on concrete footings
Options	tracfix LED line / LED spotlights shadeplus / drop valance adjustable posts stabilisation boxes baseplate covers square support posts coupled unit	depending on awning model flex (335° pivoting) shadeplus / drop valance	depending on awning model uno (with only one awning) flex (with stabilisation boxes) coupled unit	depending on awning model, round / angular posts triangular windows for the gable ends baseplate covers	LED Line / LED Spots vertical cassette blinds
	Page 56	Page 60	Page 62	Page 64	Seite 66





Ideas, detailed information, professional advice and all exquisite markilux awning cover patterns can be found in your specialist dealer's showroom and at markilux.com

markilux.com

markilux
safe timeless beautiful