



Perfect functionality meets award winning design.

markilux 1600 | The Elegant One This awning was awarded the IF product design award for its harmonious, semi-circular design. As a semi-cassette awning, the markilux 1600 is open to the bottom and still looks unique when it's fully extended. The top cover profile adapts itself to the angle of the pitch of awning, and closes completely flush with the front profile when retracted, which protects the cover safely from the rain.



markilux Shadeplus Simply block out low-lying sun and prying eyes with the additional awning cover in the project front of the markilux 1600.



Polished chrome fittings embellish the front profile and underline the design of your semi-cassette awning in a brilliant manner.

markilux 1650 The model variant with swivelling dimmable LED spotlights in the front profile guarantees a pleasant ambience in the evening.

- Dimensions** max. 710 cm × 400 cm,
max. 410 cm × 400 cm
(1600 stretch)
- Folding arm** twin chain,
optional: Bionic tendon
- Options** LED spotlights,
end caps in polished chrome,
Shadeplus, valance,
coupled unit, stretch



Control at the touch of a button, or even automatically.

Easy operating to meet the highest demands and any weather conditions. The choice is yours: manual operation (servo-assisted on request), motor and radio-controlled motor with remote control, are all possible on most models. You can even operate the system while you are away via smartphone or tablet. Better yet, why not put your feet up and add sun, wind and rain sensors to provide automatic intelligent control of your markilux designer awning? Your markilux specialist retailer is at your disposal should you have any questions regarding operating your markilux awning and will provide you with details on why awning motors with the markilux silentec technology are more popular than ever.

Arm Technology Exceptional long-life, quiet and meticulously designed to give a taut, tensioned cover.



Bionic tendon markilux have developed the bionic tendon from high-tech fibres, and used nature as its inspiration to create optimum power transmission as well as a friction-free and virtually noiseless folding motion of the arms. The safety and durability of the arms also impressed the experts of the Fraunhofer institute when it achieved more than 50,000 arm flexions in a test.



Twin chain The twin chain has been on the market for decades and has proved itself in all types of weather: the twin round steel link chain, lies protected in the folding arms.

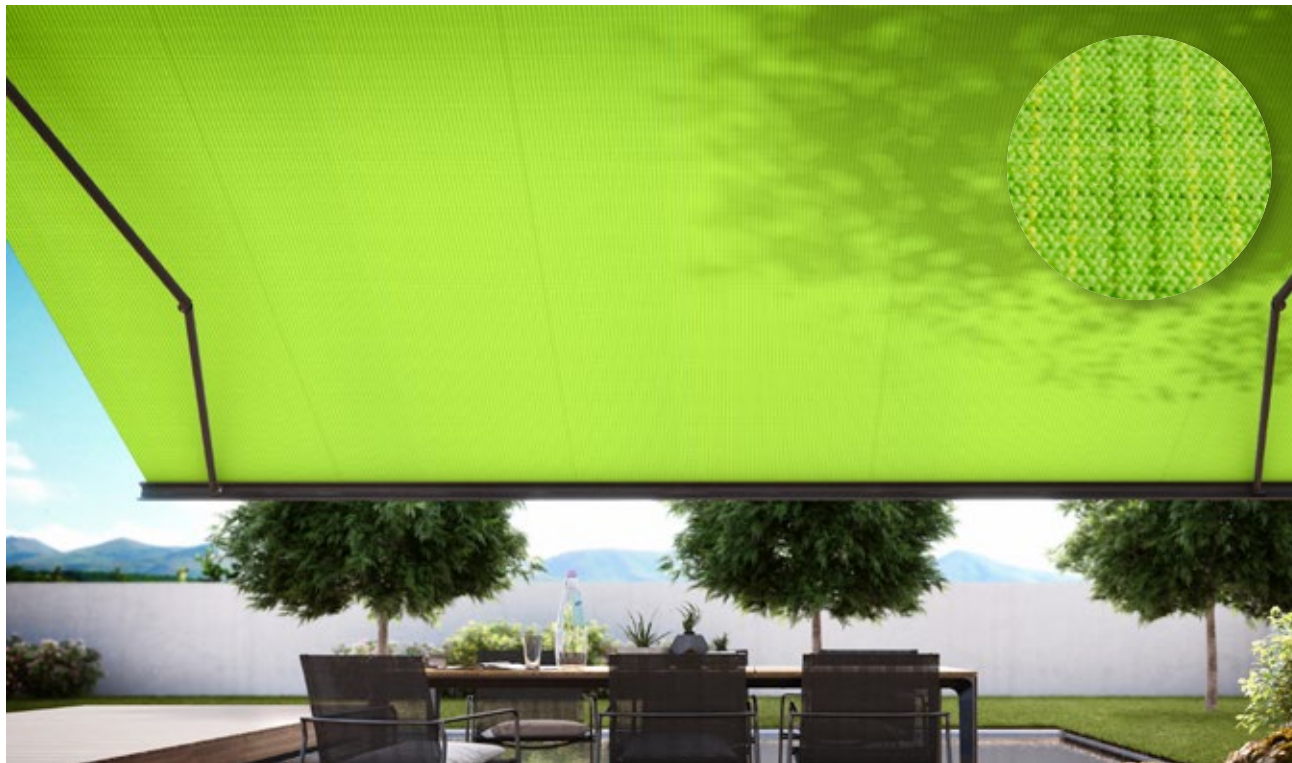


Gas piston The Gas Piston is an eye-catcher in stainless steel with the latest technology to match, the gas piston ensures optimum cover tension in any phase of extension.

markilux

Market leading fabrics, woven in house.

Our unique covers help to create a special ambience for you. The colour and quality of the awning fabric is what helps make the ambience on your patio something special. Depending on the brightness and hue, colour distinction, patterns and textures help create that unique special effect. As a leading manufacturer of high-grade awning covers with almost 100 years of experience in the manufacturing of textiles, markilux offers an unparalleled variety. The markilux textile design team is constantly developing new patterns in line with the latest trends, which are characterised by their timeless nature. Within the 250+ patterns in thematically coordinated colour families, you are certain to find your very own unique fabric.



visutex

The markilux exclusive collection Discover the subtle balanced textures and powerful colours of a stunning textured weaving technique. These unique awning fabrics are available exclusively and without any surcharge only from markilux.

Functional and beautiful.

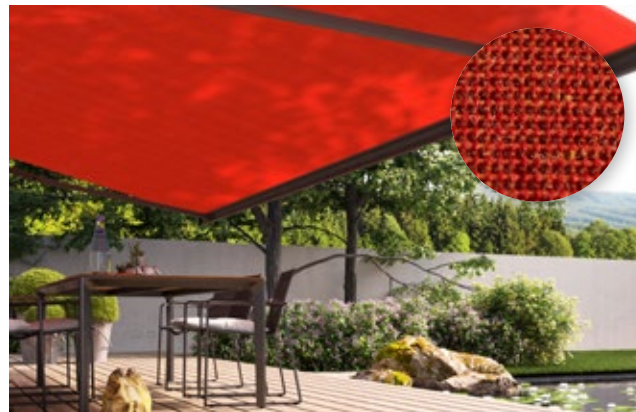
Awning covers “Made in Germany”. We manufacture awning covers that maintain their shape and colour for years, and offer your patios and balconies that special something. These high-tech awning fabrics are manufactured at the location in Emsdetten, Germany in accordance with strict quality standards. The yarns are dyed using a process we ourselves developed and show their effect in up to 16 million distinctive colours with outstanding luminosity and colour intensity. This has resulted in functional textiles, which have set exceptionally high standards in terms of quality, UV protection, ease of care and appearance. markilux awning covers are available in the qualities “sunsilk” or “sunvas” or as fabrics in our markilux specials collection serving specific requirements.

sunsilk



Brilliant luminosity. Silky smooth surface. Sunsilk awning covers impress with their unique luminosity.

sunvas



Soft glow. Textile like to the touch. Sunvas awning covers score with their textile character and natural appearance.

specials



Textiles for special requirements Semi-transparent, heat-reflecting, permeable, highly water resistant and flame-retardant awning covers extend the range of the overall markilux collection.



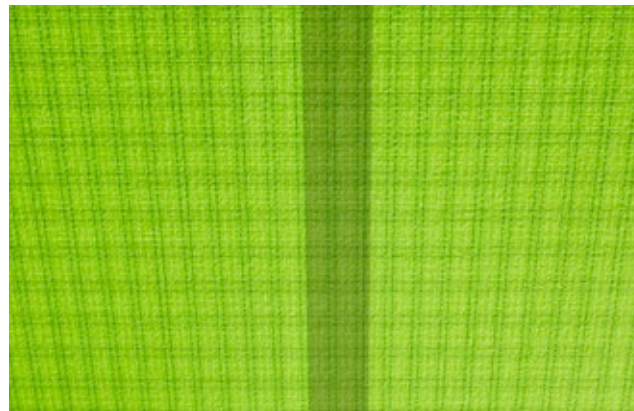
markilux sunsilk and sunvas. During the production of our awning fabrics we leave nothing to chance. We produce our fabrics exclusively in Germany using the most modern weaving technology. We add a finishing touch to the fabric using our snc finish, a special formula developed in house that creates a self-cleaning effect. This finish gives our awning covers incredible longevity and resistance against rain, light and fluctuations in temperature. This is certified according to Oeko-Tex standard 100, and is guaranteed to be free from harmful dyes or chemicals.

With an Ultraviolet Protection Factor (UPF) of 50+, all markilux awning covers made from sunsilk or sunvas offer the highest possible degree of UV protection. This allows you to enjoy sunny days for longer, without the risk.*

He who seeks shall find. The most beautiful fabric for your designer awning can be found amongst the 250+ cover patterns at your markilux specialist retailer showroom or at markilux.com



Self-cleaning snc effect Water droplets pick up dirt particles and run off the awning cover (the awning must be set at a pitch of at least 14 degrees). This allows you to rest, knowing that your fabric will retain its colour and vibrancy for years without you having to lift a finger.



Bonded awning covers Panel joints bonded together ultrasonically ensure a consistent appearance. Excellent resistance to water, light and temperature ensures that the life expectancy of the cover is extended substantially.



Light, weather and colour resistance Well-dyed high-tech yarns and a high-grade cover finish developed in house guarantee the most beautiful shade in which to relax peacefully for years to come.

* Protect your skin with care! Do not spend longer periods outside without applying sun cream. The UPF afforded by the awning applies only to direct sunlight. It offers no protection against reflected sunlight (e.g. from water).

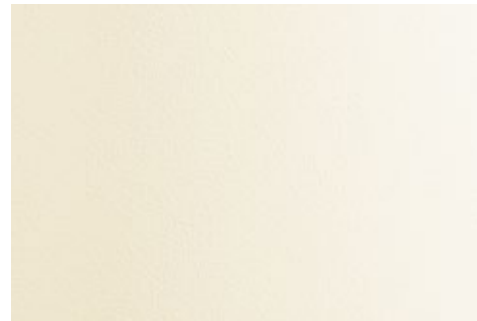
Turn your imagination into reality with our range of stunning frame colours.

Choose from our extensive collection of colours. Choose the awning frame colour to complement the colour of the fabric and configure your own amazing design. From a variety of shades of white through to the elegant shades of anthracite, a wide range of colours are available to you. Do you want a particular colour scheme? No problem! We will gladly manufacture your dream awning in your own personal shade of colour. Our high-grade powder coating is guaranteed on any awning colour you choose.



Traffic white

RAL 9016



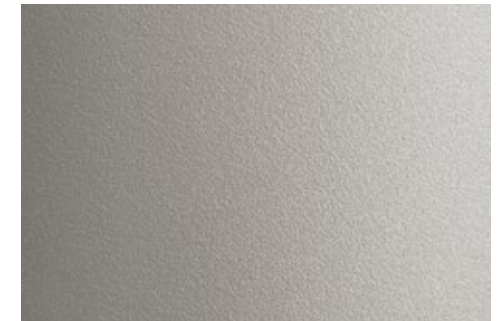
Off-white textured finish

5233



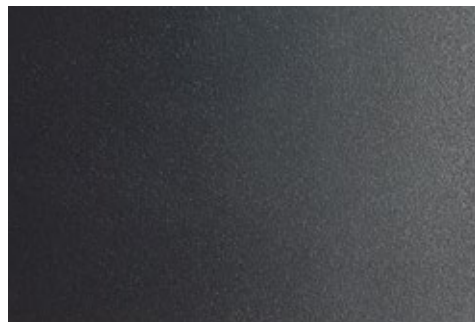
Metallic aluminium

RAL 9006



Stone grey metallic

5215



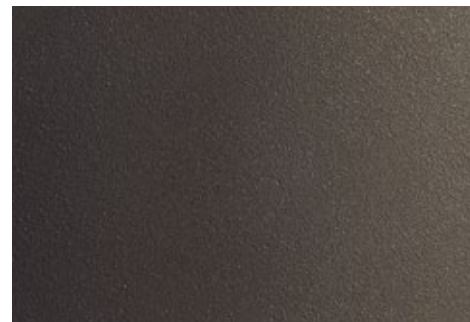
Anthracite metallic

5204



Grey brown

RAL 8019



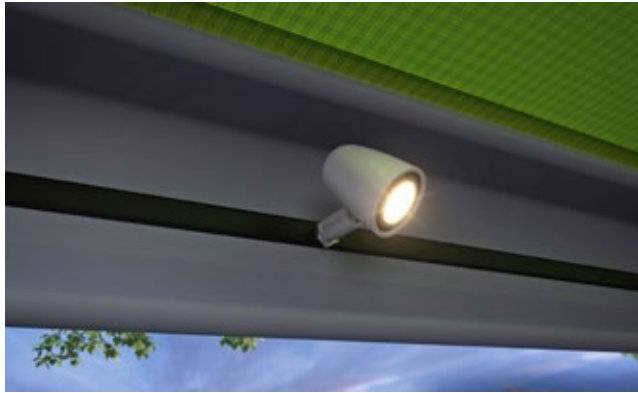
Havana brown textured finish

5229



RAL colour of your choice

Options – variations in specification according to the model.



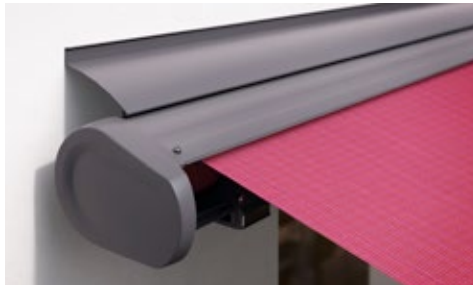
LED lighting options Suspended from the cassette, on the wall or in the front profile: LED spotlights that can be pivoted and dimmed create a lovely atmosphere on your patio in the evening.



stretch The perfect solution for narrow patios, recesses or balconies: thanks to the two crossover arms even awnings with a narrow width can extend further.



Valance The short, decorative piece of fabric suspended from the front profile lends your awning a classic look. Different valance shapes are available.



Wall sealing profile The slim aluminium profile in the awning colour closes the gap between the awning and the wall, allowing the rain to be discreetly drained off the awning.



Polished chrome fittings Stylish end caps and fittings made from polished chrome add a noble look to your awning.



Colour variants and combinations Cassettes and front profiles are available in attractive colours and can be combined at will.



Coupled units Connecting two or more awnings together and operating them simultaneously offers even more shade. In folding-arm awnings a special roller blind in the centre covers the gap between the two awnings.

markilux Shadeplus Simply block out the glare from a low-lying sun and the glances of inquisitive neighbours and capture the warmth of the day in the evening. The additional awning cover is lowered vertically downwards from the front profile to create a wonderfully private room outdoors. Depending on the model, it is also available with a hard-wired motor or with remote control.

It is impossible not to be enthusiastic The numerous markilux options available set new standards for the stylish shading of your favourite spot in the garden. For complete information and competent advice speak to your markilux specialist dealer and got to [markilux.com](https://www.markilux.com)



Accessories – light, warmth and ease of operation make living outdoors truly relaxing.



markilux spotlight LED Turns night into day. The elegant light bar in the matching, powder-coated housing can be mounted anywhere, the lights are pivotable and dimmable and it comes in three standard lengths.



markilux infra-red heater for even longer. It has a long service life, is energy efficient and comes protected in a matching, powder-coated housing. Available in 1400 W or 2000 W.



markilux hotspot Warmth and light that create atmosphere until late in the night. Four halogen spotlights and two infra-red heaters are perfectly combined and protected in a housing that matches the colour of your awning. Can be fitted to any wall.



markilux sun and wind sensor Depending on the current weather situation, this intelligent control system will extend and retract your awning automatically.



markilux sun sensor Intelligent control of your awning depending on the ambient solar light intensity. Independent from the mains thanks to solar cell technology.



markilux rain sensor The awning retracts automatically in the case of precipitation by virtue of this intelligent control mechanism, which protects the awning cover.



markilux vibrabox Intelligent, sensitive and independent from the mains. The vibrabox is an inertia sensor and depending on wind load a motor-driven awning will be retracted automatically to protect it.