

Escape the indoors, whatever the weather.

Designer awnings for both patio and balcony

markilux

safe timeless beautiful







Al fresco living.

Whether you're simply relaxing or having a gathering with family and friends, these are always valuable moments. markilux designer awnings not only provide shade, they also help create new opportunities to enjoy life. From protection on hot days to a perfect ambience, even when the sun has set, markilux awnings allow you to relax outdoors any time of day. Choosing a markilux designer awning is a decision, to opt for the best available quality and design.

markilux



Escape the indoors, whatever the weather.

Designer awnings for both patio and balcony

markilux “Made in Germany”	6	Cassette Awnings	20	Semi-cassettes, Open Awnings and the Side Screen	44	Awning Systems	54
The markilux quality promise	7	markilux MX-1	24	markilux 1600	46	markilux pergola	56
The markilux system	8	markilux MX-1 compact	26	markilux 930	48	markilux planet	60
markilux operation and technology ..	10	markilux ES-1	30	markilux 1700	50	markilux syncra	62
markilux covers and colours	12	markilux 6000	32	markilux 790	52	markilux RS-2	64
markilux awning covers.	14	markilux 5010	34			Options, Extras and Overview	66
markilux awning frame colours.	18	markilux 970	36			Options	68
		markilux 990	38			Extras	70
		markilux 3300	40			Overview awnings	72
		markilux 1710	42			Overview awning systems	74

Award-winning German design.

markilux awnings “Made in Germany” As a family business in its fourth generation, we have been producing awnings for over 40 years. What makes markilux unique is the combination of designer quality awnings and the weaving of our awning covers all being done under one roof, which is why we are truly “Made in Germany” right down to the last detail. Our originality shows when it comes to making living outdoors even more enticing. We don’t stop at good solutions; we look to improve on these solutions every day. This allows us to offer the best to our customers in every respect - a perfect combination of form and function..

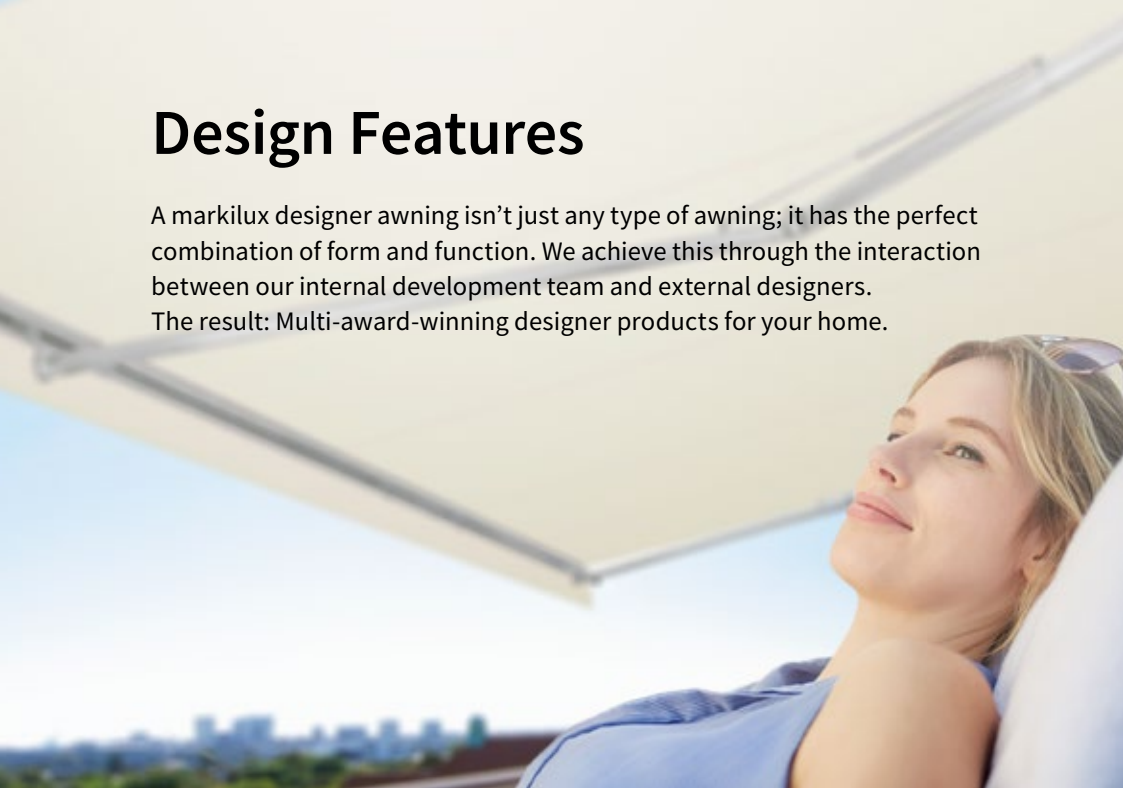
markilux designer awnings are characterised by quality, multi-award-winning designs and innovative technology that make your patio and balcony extra special. You can take our word for it with our markilux quality promise.

markilux designer awnings have received a multitude of awards:



Design Features

A markilux designer awning isn't just any type of awning; it has the perfect combination of form and function. We achieve this through the interaction between our internal development team and external designers. The result: Multi-award-winning designer products for your home.



Quality

Every detail is important during the production of our designer awnings. The high-grade materials and the comprehensive quality management system used ensure that each awning will have an extremely long service life. markilux is certified according to the DIN EN ISO 9001 standard and with this we pursue one objective: The satisfaction of our customers.



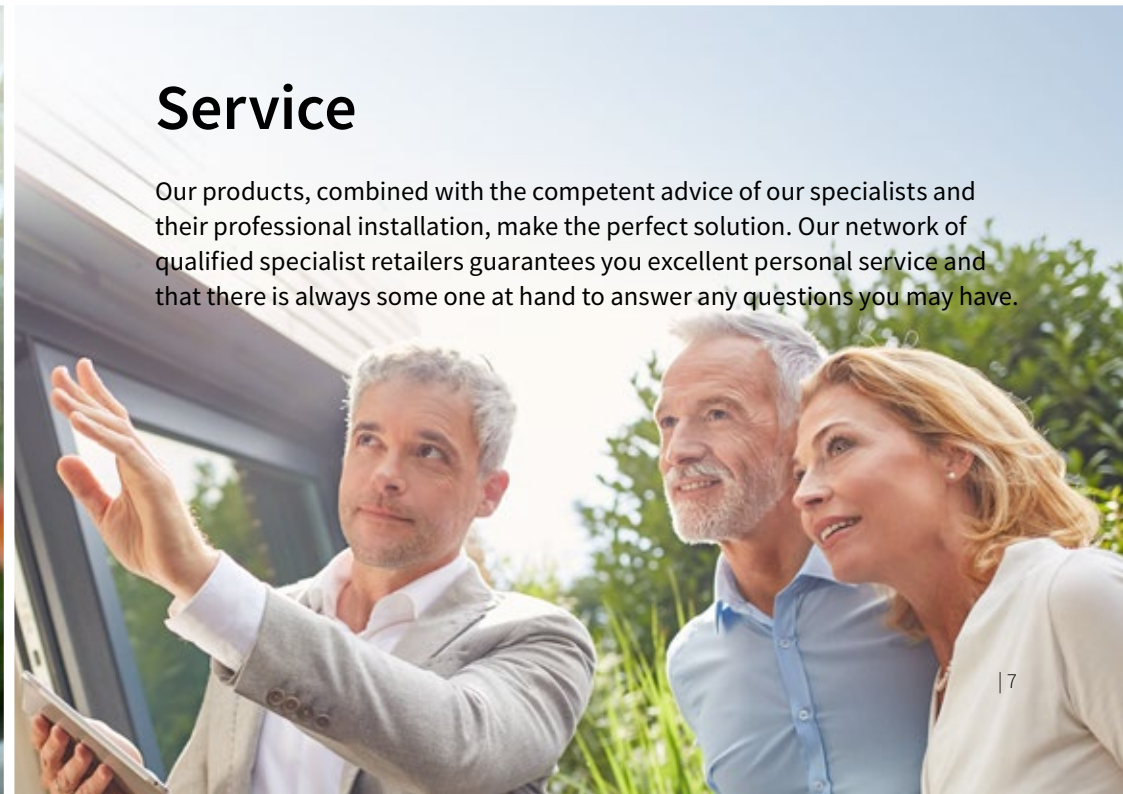
Function

markilux combines innovative technologies and smart solutions with high-end products. With the variety of accessories available, you can enhance your markilux designer awning to suit your own requirements. The wide range of operating options guarantees you the highest degree of comfort.



Service

Our products, combined with the competent advice of our specialists and their professional installation, make the perfect solution. Our network of qualified specialist retailers guarantees you excellent personal service and that there is always some one at hand to answer any questions you may have.





Customised, Personal and Unique.

There are numerous ways you can customise your designer awning. Your markilux designer awning is as unique as you are. With a choice of more than 45 models, 250 fabric patterns and a variety of available accessories you can design an awning to suit your every need. With lighting modules, infrared heaters, smart control technology and other additional functions, markilux awnings can enhance your outdoor experience at any time of day. Your markilux specialist retailer will gladly assist you with their professional advice and suggestions when helping you configure your very own designer awning.



Large range of colours and patterns Our textile designers identify current trends from interior design, architecture and choice of colour and turn them into unique awning covers. markilux offers you an extensive selection with more than 250 patterns to choose from.

from page 12

Design and function perfectly combined Every markilux designer combines design, quality and technology into one unique solution. Within our large range of models, there is bound to be one that fulfils your wishes in terms of functionality and matches the ambience of your patio and balconies perfectly.

from page 20

Options and extras Our optional lighting solutions, comfortable operating technology and additional extras such as infrared heaters mean that we can build your system to your desired specification. We aim to make being outdoors a pleasure for you even when the sun isn't shining.

from page 66

markilux



Control at the touch of a button, or even automatically.

Easy operating to meet the highest demands and any weather conditions. The choice is yours: manual operation (servo-assisted on request), motor and radio-controlled motor with remote control, are all possible on most models. You can even operate the system while you are away via smartphone or tablet. Better yet, why not put your feet up and add sun, wind and rain sensors to provide automatic intelligent control of your markilux designer awning? Your markilux specialist retailer is at your disposal should you have any questions regarding operating your markilux awning and will provide you with details on why awning motors with the markilux silentec technology are more popular than ever.

Arm Technology Exceptional long-life, quiet and meticulously designed to give a taut, tensioned cover.



Bionic tendon markilux have developed the bionic tendon from high-tech fibres, and used nature as its inspiration to create optimum power transmission as well as a friction-free and virtually noiseless folding motion of the arms. The safety and durability of the arms also impressed the experts of the Fraunhofer institute when it achieved more than 50,000 arm flexions in a test.



Twin chain The twin chain has been on the market for decades and has proved itself in all types of weather: the twin round steel link chain, lies protected in the folding arms.



Gas piston The Gas Piston is an eye-catcher in stainless steel with the latest technology to match, the gas piston ensures optimum cover tension in any phase of extension.

markilux



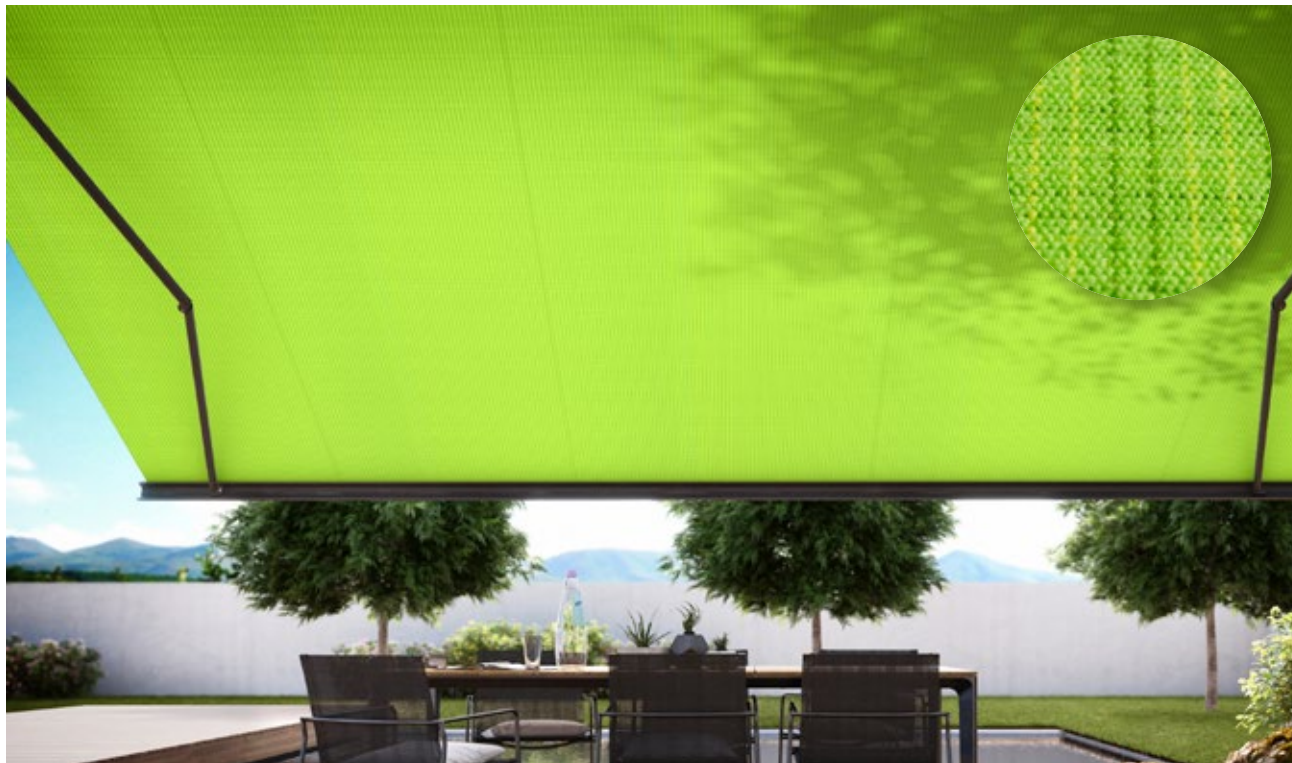
The background of the slide is a soft-focus photograph. In the upper left corner, a portion of a white awning frame is visible, extending diagonally across the frame. The rest of the image is filled with out-of-focus greenery, including trees and bushes, creating a bokeh effect with various shades of green and some light-colored highlights.

markilux Awning Covers and Awning Frame Colours



Market leading fabrics, woven in house.

Our unique covers help to create a special ambience for you. The colour and quality of the awning fabric is what helps make the ambience on your patio something special. Depending on the brightness and hue, colour distinction, patterns and textures help create that unique special effect. As a leading manufacturer of high-grade awning covers with almost 100 years of experience in the manufacturing of textiles, markilux offers an unparalleled variety. The markilux textile design team is constantly developing new patterns in line with the latest trends, which are characterised by their timeless nature. Within the 250+ patterns in thematically coordinated colour families, you are certain to find your very own unique fabric.



visutex

The markilux exclusive collection Discover the subtle balanced textures and powerful colours of a stunning textured weaving technique. These unique awning fabrics are available exclusively and without any surcharge only from markilux.

Functional and beautiful.

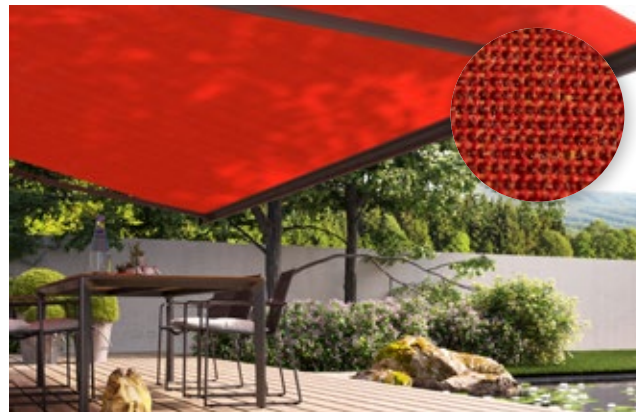
Awning covers “Made in Germany”. We manufacture awning covers that maintain their shape and colour for years, and offer your patios and balconies that special something. These high-tech awning fabrics are manufactured at the location in Emsdetten, Germany in accordance with strict quality standards. The yarns are dyed using a process we ourselves developed and show their effect in up to 16 million distinctive colours with outstanding luminosity and colour intensity. This has resulted in functional textiles, which have set exceptionally high standards in terms of quality, UV protection, ease of care and appearance. markilux awning covers are available in the qualities “sunsilk” or “sunvas” or as fabrics in our markilux specials collection serving specific requirements.

sunsilk



Brilliant luminosity. Silky smooth surface. Sunsilk awning covers impress with their unique luminosity.

sunvas



Soft glow. Textile like to the touch. Sunvas awning covers score with their textile character and natural appearance.

specials



Textiles for special requirements Semi-transparent, heat-reflecting, permeable, highly water resistant and flame-retardant awning covers extend the range of the overall markilux collection.



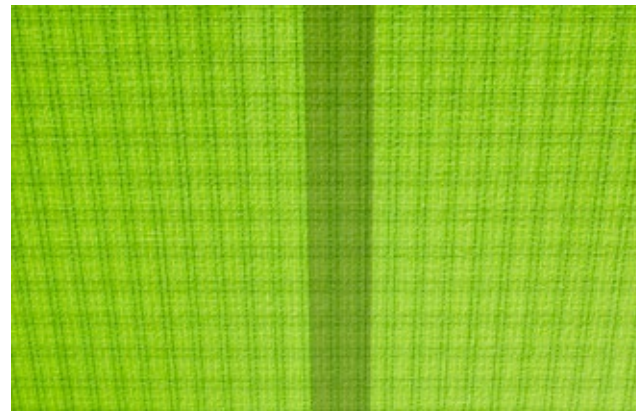
markilux sunsilk and sunvas. During the production of our awning fabrics we leave nothing to chance. We produce our fabrics exclusively in Germany using the most modern weaving technology. We add a finishing touch to the fabric using our snc finish, a special formula developed in house that creates a self-cleaning effect. This finish gives our awning covers incredible longevity and resistance against rain, light and fluctuations in temperature. This is certified according to Oeko-Tex standard 100, and is guaranteed to be free from harmful dyes or chemicals.

With an Ultraviolet Protection Factor (UPF) of 50+, all markilux awning covers made from sunsilk or sunvas offer the highest possible degree of UV protection. This allows you to enjoy sunny days for longer, without the risk.*

He who seeks shall find. The most beautiful fabric for your designer awning can be found amongst the 250+ cover patterns at your markilux specialist retailer showroom or at markilux.com



Self-cleaning snc effect Water droplets pick up dirt particles and run off the awning cover (the awning must be set at a pitch of at least 14 degrees). This allows you to rest, knowing that your fabric will retain its colour and vibrancy for years without you having to lift a finger.



Bonded awning covers Panel joints bonded together ultrasonically ensure a consistent appearance. Excellent resistance to water, light and temperature ensures that the life expectancy of the cover is extended substantially.



Light, weather and colour resistance Well-dyed high-tech yarns and a high-grade cover finish developed in house guarantee the most beautiful shade in which to relax peacefully for years to come.

* Protect your skin with care! Do not spend longer periods outside without applying sun cream. The UPF afforded by the awning applies only to direct sunlight. It offers no protection against reflected sunlight (e.g. from water).



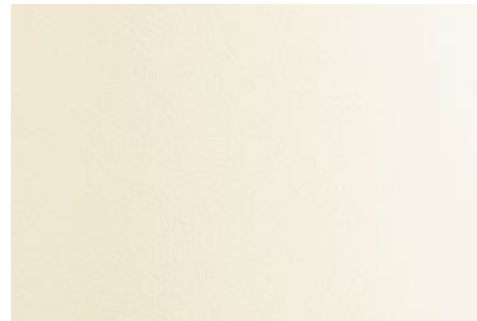
Turn your imagination into reality with our range of stunning frame colours.

Choose from our extensive collection of colours. Choose the awning frame colour to complement the colour of the fabric and configure your own amazing design. From a variety of shades of white through to the elegant shades of anthracite, a wide range of colours are available to you. Do you want a particular colour scheme? No problem! We will gladly manufacture your dream awning in your own personal shade of colour. Our high-grade powder coating is guaranteed on any awning colour you choose.



Traffic white

RAL 9016



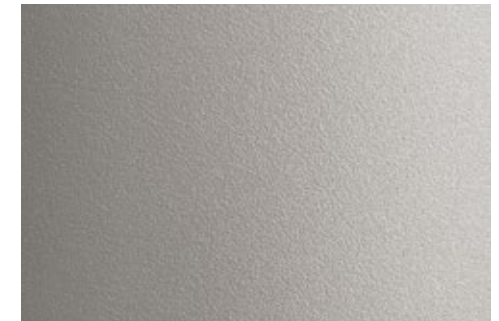
Off-white textured finish

5233



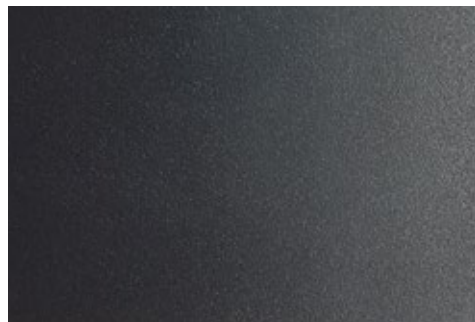
Metallic aluminium

RAL 9006



Stone grey metallic

5215



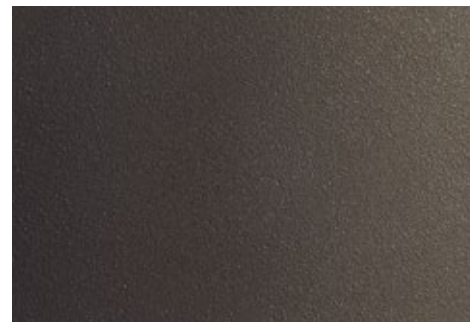
Anthracite metallic

5204



Grey brown

RAL 8019



Havana brown textured finish

5229



RAL colour of your choice



A man with grey hair and a beard, wearing a grey t-shirt and light-colored shorts, is sitting on a dark wicker chair. He is holding a white tablet computer in his hands and looking towards the camera with a slight smile. He is positioned under a white cassette awning. The background shows a bright, sunny outdoor setting with a white wall and a blue sky. The awning's slats are visible at the top of the frame.

markilux Cassette Awnings

markilux Cassette Awnings

Elegant all-round protection With a markilux cassette awning you're protected whatever the weather. When the awning is retracted, the cassette completely encompasses the awning cover and provides the best possible protection from wind and weather.

markilux MX-1 | The Ultimate One



**markilux MX-1 compact |
The "Petite" Ultimate One**



markilux 970 | The Linear One



markilux 990 | The Slim One



markilux ES-1 | The Unique One



markilux 6000 | The Individual One



markilux 5010 | The Universal One



markilux 3300 | The Practical One



markilux 1710 | The Classic One



markilux



The technology of tomorrow.

markilux MX-1 | The Ultimate One Even at first glance, the markilux MX-1 makes an immediate impact with its unique mix of shape and functionality. Retracted, the tapered full cassette with a depth of 62 cm makes a deep impression on the observer as a weather-proof canopy that protects your awning from the effects of the weather. When extended the markilux MX-1 shows its true magnitude. This, the ultimate in designer awnings, is a pioneer due to the numerous technological innovations it incorporates and its multi-award winning design. The markilux MX-1 creates an unparalleled atmosphere at any time of the day, which will charm you again and again, today and in the future.



LED spotlights in the canopy Highlight specific areas and enjoy the evening hours under the awning in a delightful atmosphere. Discover further lighting and design options on page 28.

markilux Shadeplus The additional awning cover in the front profile protects against low-lying sun and prying eyes at the touch of a button.



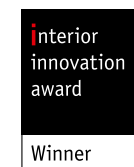
- Dimensions** max. 700 cm × 437 cm,
overall depth approx. 62 cm
- Folding arms** Bionic tendon
- Options** Shadeplus,
a broad range of light
and colour options,
page 28



GERMAN
DESIGN
AWARD
SPECIAL



DESIGN
AWARD



interior
innovation
award

Winner



reddot design award



Delivering beautiful protection, any time of year.

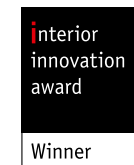
markilux MX-1 Compact | The “Petite” Ultimate One The “petite” markilux MX-1 with all the technological innovations and with the variety of features typical of markilux. It also offers you spectacular ambient lighting, brilliant LED options in the front profile as well as every possibility of influencing the colour design. The “petite” ultimate one makes your favourite spot in the garden particularly enticing. The markilux MX-1 Compact enhances the appearance of buildings with a modern, minimalist architectural design.



A personal statement on any façade The “petite” ultimate markilux MX-1 compact with an overall depth of 38 cm is an eye-catcher, solar and weather protection in one.



- Dimensions** max. 700 cm × 415 cm,
overall depth approx. 38 cm
- Folding arms** Bionic tendon
- Options** Shadeplus,
a broad range of light
and colour options,
page 28



reddot design award

markilux MX-1 / MX-1 compact – options



traffic white

light ivory

yellow

red

green

LED Ambient lighting An impressive eye-catcher in the evening hours. The lit-up front profile is available in five contrasting colours and can be dimmed.



LED Line in front profile For atmospheric and uniform lighting after sunset.



LED spotlights in the front profile A brilliant lighting effect converts the room under the awning into an oasis of well-being in the evening.



Colour combinations Cassette and front panel are available in different colours, which can be combined freely.



LED spotlights in the front canopy Let the evening come ... And with it the time of captivating lighting effects, optionally directed downwards and/or upwards. Available only in the markilux MX-1.

markilux Shadeplus At just the touch of a button, the optional protection from glare and prying eyes creates an enviable, private room outdoors. As standard, the Shadeplus is equipped with a radio-controlled motor and comes supplied with a markilux remote control.

Allow yourself to be inspired Whosoever makes the effort to discover the variety of options at markilux will love them. Design your own personal favourite awning with a markilux specialist retailer near you or at [markilux.com](https://www.markilux.com)

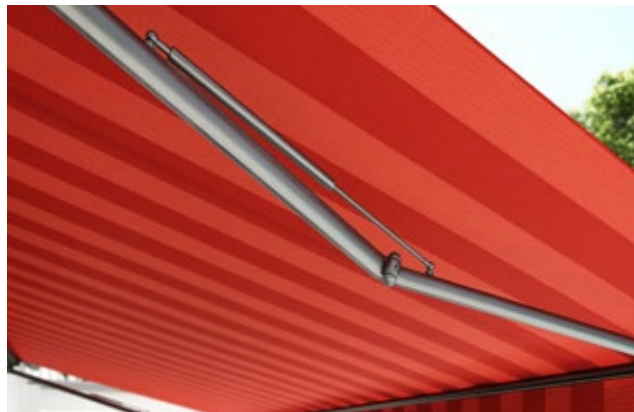


The one that withstands the elements.

markilux ES-1 | The Unique One The world's only designer awning made of marine grade stainless steel is a design piece to fall in love with. The markilux ES-1 is a perfect combination of material, shape and function. This makes this awning a visual highlight, which will lose none of its magnificence even after many years, as the corrosion-resistant stainless steel will not fail you in even the stormiest of weather. With the markilux ES-1 you own a stylish treasure that brings you a great deal of pleasure and invites you to enjoy your outdoor life with sophistication.



Valance This classic extension of the cover suspended from the front profile gives your stainless steel treasure a classy touch. Available in different shapes and manufactured to match the pattern of the awning cover.



Stainless steel gas pistons With impressive power, the perfectly matched gas piston technology of the folding arms is a visual highlight and ensures optimum cover tension - even when the awning is not extended completely.





Dimensions max. 650 cm × 300 cm
max. 600 cm × 350 cm

Folding arm gas piston

Options valance



reddot design award



Germany's Top Model.

markilux 6000 | The Individual One A designer awning with many faces – each one more beautiful than the next. Create your own personal and unique model from a wide range of awning frame colours, decorative elements and available accessories. With its remarkable dimensions and technical values, the markilux 6000 makes a lasting impression. It also cuts a dashing figure as well. Invite Germany's top model into your home.



LED spotlights in the front profile More than a decorative highlight. The markilux 6000 lights up your favourite spot in an elegant, flexible and energy-efficient manner, just the way you want it.

markilux Shadeplus The vertical shading in the front profile adds the finishing touch and provides personal protection from the sun and prying eyes. On request the Shadeplus can come with a hard-wired or radio-controlled motor.



Variable decorative elements Whether you choose the end cap insert in stainless steel mesh, the end cap trim in chrome finish or all deliberately uniform in the awning colour of your choice - you can design your very own personalised top model by markilux.

- Dimensions** max. 700 cm × 400 cm
- Folding arm** Bionic tendon
- Options** LED spotlights in the front profile, end cap insert in stainless steel mesh, frame in polished chrome, Shadeplus, valance, coupled unit



reddot design award

Enjoy happy hour, 24 hours a day.

markilux 5010 | The Universal One The markilux 5010 effortlessly extends, either at the touch of a button or via smart control through an app, this awning will be a hit with all the family. On top of that, as a coupled unit with up to three awnings installed next to one another, friends and guests will also be able to find a cosy spot in the generous shade this awning offers. This multi-talent encourages relaxed get togethers and turns any hour spent outdoors into a happy hour.



Polished chrome fittings Optionally available as an eye-catcher - and without surcharge, it's so friendly to your wallet: the chrome-look end caps fitted to the front profile.

markilux Shadeplus Enjoy relaxing on the patio even when the sun is low.





Dimensions max. 700 cm × 400 cm

Folding arm double chain-link arms,
optional: Bionic tendon

Options polished chrome fittings,
Shadeplus, valance,
coupled unit



Urban chic for a clean, sleek appearance.

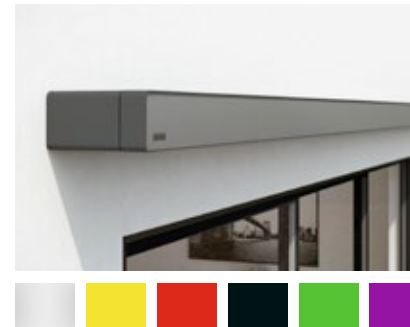
markilux 970 | The Linear One This awning incorporates an urban lifestyle with confidence. The neat and slim appearance of the markilux 970 makes it the ideal model for those who love the simplicity of elegance. This svelte designer awning wraps your patio in comforting light and makes it a stylish place of retreat where your guests, too, will completely feel at home. The numerous styling options and the variable designs of the front panel lighting lend that individual something to the markilux 970. All in all, because of its clean lines and straightforward design, this awning is an all round performer.



LED spotlights under the cassette During the twilight and evening hours they ensure a stylish ambience.



markilux Shadeplus For more protection from prying eyes and glare: The optional vertical blind in the front profile will captivate you.



Free colour choice The colours of the cassette and front panel can be freely combined. The front panel is also available in another six contrasting colours.



Dimensions max. 600 cm × 300 cm
max. 500 cm × 350 cm

Folding arm Bionic tendon

Options LED spotlights under the cassette, selectable colour combination, coloured front profiles, Shadeplus





Create a carefree ambience.

markilux 990 | The Slim One Small, but impressive! You will be surprised how much technological sophistication there is in this 125mm flat cassette. The compact construction with the U-shaped front profile in which the folding arms and awning cover disappear, and an impressive angle of pitch of up to 70 degrees when ceiling mounted make this awning best suited for smaller patios and balconies. Thanks to these advantages you can easily spend many hours relaxing in the shade.



Wall sealing profile The slim aluminium profile in the awning colour closes the gap between the awning and the wall. Allowing rain to be discreetly drained off the awning.

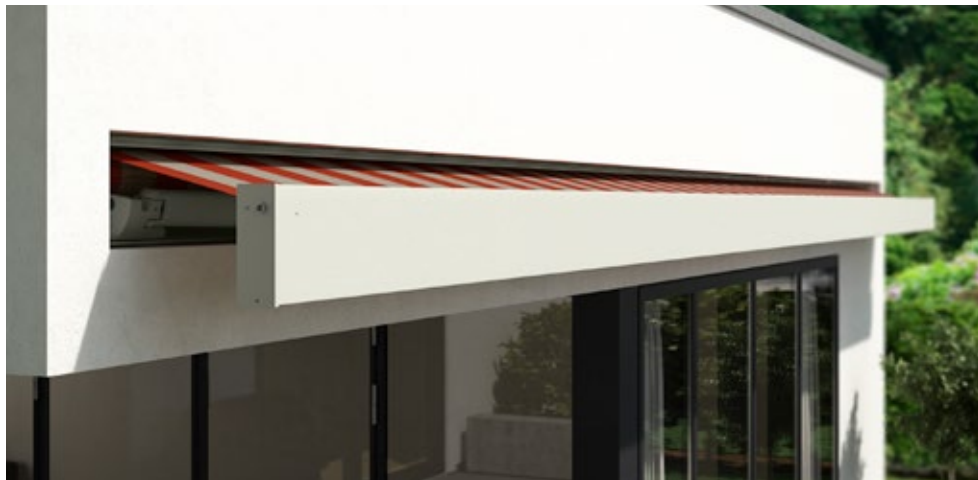
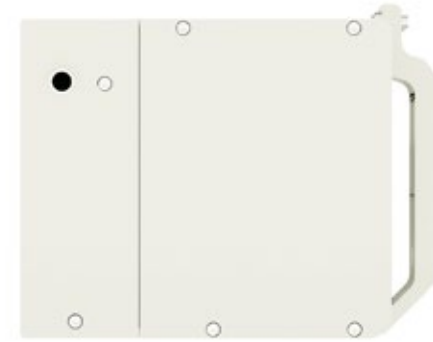
End caps in polished chrome Add that certain extra touch to your markilux 990.

- Dimensions** max. 500 cm × 300 cm
- Folding arm** double chain-link arms, optional: Bionic tendon
- Options** end caps in polished chrome, valance



High Impact. Low Maintenance.

markilux 3300 | The Practical One Can an awning be merged visually into the architecture of a house? The markilux 3300 proves that it can. Depending on the structural situation, this design awning, with its smooth front profile disappears completely into a wall or precisely into a recess. When extended, it comes into its own with up to 7 times 4 metres. And you can shade even larger areas by coupling up to three single awning together. Discover how practical the markilux 3300 can be, and make this awning really big within your home.



Angular design By virtue of exact recess installation in the ceiling or wall, the markilux 3300 blends perfectly with its structural surroundings.

Dimensions max. 700 cm × 400 cm

Folding arm Bionic tendon

Options valance,
coupled unit



Slim, compact shading all year round.

markilux 1710 | The Classic One The markilux 1710 interprets the classic awning shape in a contemporary manner. The visible round torque bar merges organically with the round cassette to form an elegant design feature. Due to its shape and the timelessly beautiful decorative elements made from polished chrome, the markilux 1710 suits almost any patio.



Polished chrome fittings Side caps matching the awning colour or deliberately emphasised in fine polished chrome. This awning can simply wear anything.



markilux 1710 stretch For great performance on narrow patios, balconies and recesses: Thanks to the two crossover arms even awnings with a narrow width can extend considerably further.

- Dimensions** max. 700 cm × 350 cm
max. 350 cm × 350 cm
(1710 stretch)
- Folding arm** Bionic tendon
- Options** polished chrome elements,
valance, coupled unit,
stretch




NOMINEE



reddot design award



The background of the slide is a blurred photograph. The upper portion shows a white, curved structure, likely an awning or part of a building's facade, with a soft shadow cast below it. The lower portion is dominated by out-of-focus green foliage, possibly trees or bushes, creating a bokeh effect with soft, circular light spots. The overall lighting is bright and natural, suggesting an outdoor setting.

Semi-cassettes, Open Awnings and the Side Screen



Perfect functionality meets award winning design.

markilux 1600 | The Elegant One This awning was awarded the IF product design award for its harmonious, semi-circular design. As a semi-cassette awning, the markilux 1600 is open to the bottom and still looks unique when it's fully extended. The top cover profile adapts itself to the angle of the pitch of awning, and closes completely flush with the front profile when retracted, which protects the cover safely from the rain.



markilux Shadeplus Simply block out low-lying sun and prying eyes with the additional awning cover in the project front of the markilux 1600.



Polished chrome fittings embellish the front profile and underline the design of your semi-cassette awning in a brilliant manner.

markilux 1650 The model variant with swivelling dimmable LED spotlights in the front profile guarantees a pleasant ambience in the evening.

- Dimensions** max. 710 cm × 400 cm,
max. 410 cm × 400 cm
(1600 stretch)
- Folding arm** twin chain,
optional: Bionic tendon
- Options** LED spotlights,
end caps in polished chrome,
Shadeplus, valance,
coupled unit, stretch





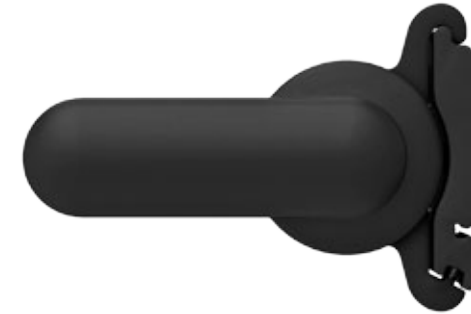
Perfect for balconies or eaves.

markilux 930 | The Mobile One This awning moves differently from the rest, because as when you retract the markilux 930, the awning pivots into a horizontal position and disappears below the soffit. When extended, the angle of the pitch can be up to 80 degrees – if requested, the awning can pivot almost to the vertical. The moving markilux 930 is perfect for all balconies and eaves that require no additional protection of the awning or awning cover. This awning allows you to enjoy being outside in the evening even when the sun is low.



Pivoting mechanism When retracted, the only 122 mm flat cassette disappears discreetly under the ceiling. Only during the extension process does the markilux 930 pivot to your desired angle.

Valance The perfect balcony awning gets individual charm with the additional decorative cover at the projection profile.



Dimensions max. 500 cm × 300 cm

Folding arm twin chain

Options valance

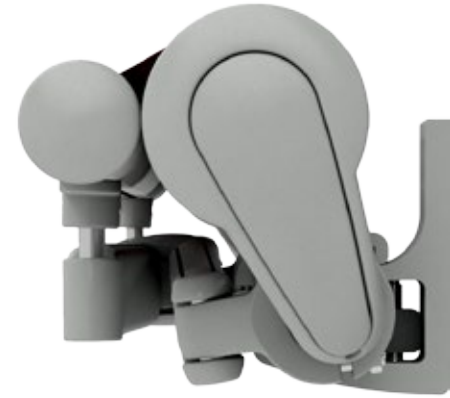


reddot design award



Open your mind to life outdoors.

markilux 1700 | The Open One Whenever you would like to enjoy life outdoors, the open design of the markilux 1700, will create comfortable shading on your patio or balcony. Its organic design is elegant and timeless, and thanks to the stable support tube, it opens up the possibility to connect up to three awnings together, allowing the possibility to shade large areas without any problems.



markilux 1700 stretch Available for narrow recesses and openings, with two crossover folding arms providing greater projection than width.

Polished chrome fittings Both the open markilux 1700 and its closed counterpart, the markilux 1710, can be embellished with polished end caps and inserts on request.

- Dimensions** max. 700 cm × 400 cm,
max. 400 cm × 400 cm (stretch)
- Folding arm** Bionic tendon
- Options** polished chrome elements,
valance, coupled unit,
stretch



NOMINEE



reddot design award



Always by your side.

markilux 790 | The Upright One There are few seating areas outdoors that are protected on all sides from sun wind and prying eyes. Therefore, the slim markilux side screen simply makes your life on balcony or patio more comfortable and enticing. The robust compact cassette can be mounted easily and it can be extended with one movement. The markilux 790 is always by your side when you need it and whenever you feel like making use of its benefits.

Dimensions extension: max. 450 cm
height: 90 cm – 250 cm

Options sloping top edge,
mobilfix,
various installation
brackets options



A broad range of brackets For any situation markilux has an apt installation option.




mobilfix The moving support post with granite baseplate stands secure, wherever you want it to.



Sloping top edge The cover is available with a sloping top edge which can be adapted to the pitch of your markilux awning. It creates a beautiful, enclosed and protected area free from prying eyes and the glare of the sun.



A man with short brown hair, wearing a light-colored t-shirt, is smiling and holding a slice of watermelon. He is standing under a white awning structure. The background is slightly blurred, showing a building and some greenery.

markilux
Awning Systems



Here's to getting together, whatever the weather.

markilux pergola The markilux pergola ranks top when it comes to solar and weather protection. The awning system on slender posts and lateral guide tracks provides generous shading with an extension of up to 6 metres. The markilux pergola defies wind and weather up to Beaufort 6 (wind resistance class 3). You can make this awning your own with markilux's Shadeplus, tracfix, an array of lighting options and post variants. No matter how strong the sun shines or the wind blows, with your markilux pergola you can enjoy life outdoors at any time.

Dimensions max. 500 cm × 600 cm
max. 600 cm × 450 cm

Options tracfix, Shadeplus
and a number of
other comfort and
design options,
page 58



Coupled unit For all who want even more shade: Up to three single units can be connected to one another.

markilux Shadeplus The additional vertical blind connected to the front profile simply blocks out low-lying sun and the glances of inquisitive neighbours.



Closed full cassette The cover disappears completely in the cassette and is ideally protected. If anything can be more beautiful than the appearance of the awning, it is the way the markilux pergola functions faultlessly.



Front profile and guide tracks When the awning is extended both match one another perfectly.

markilux pergola – options



markilux tracfix One of markilux's many sophisticated features: the lateral cover guidance without a gap between the cover and guide track. For a more beautiful overall appearance and better wind stability.



Adjustable post For better water drainage, the front post of the markilux pergola can be lowered by up to 40 cm in no time at all.



LED line Light for reading or informal get-togethers, optionally in the guide tracks and/or in the cover support tube, turns your nights into day.



Square support / baseplate covers meets the demand for clear, angular shapes and a clean finish at the base of the front post or supports.



Stabilisation boxes Give your markilux pergola reliable stability, when mounting the front posts to foundations is not possible or desired.



Stainless steel crank Bring the adjustable posts to the desired height in no time at all.



LED spotlights attached to the cover support tube These spotlights will provide perfect contrast lighting in the evening hours, pivoting and dimmable.



markilux Shadeplus The vertical protection against sun and prying eyes – up to 230 cm in height – creates a private room outdoors with its own special ambience.



The planet really does revolve around you.

markilux planet The markilux planet is a parasol and awning in one. It's an eye catcher that provides perfect shading to your room outdoors. The awning parasol protects you from solar radiation with exceptional reliability; it's extremely sturdy, yet mobile. With the easy to use lever in the flex variant, you can simply rotate the awning parasol up to 335 degrees, so you can have the shade wherever you want it. The slim post carries the desired markilux design awning with ease and the combination of functionality and design is impressive.



markilux Shadeplus The retractable and extendable protection against sun, glances and glare in the front profile lets you enjoy low-lying sun without having to care about prying eyes.

flex variant The markilux planet flex can be rotated and turned however you want up to 335 degrees.



Easy go lever Permits easy rotation of the markilux planet flex.

Dimensions depending on awning model
max. 600/610 cm × 300 cm
max. 500/510 cm × 350 cm

Folding arm depends on model

Options depending on awning model,
flex rotates up to 335 degrees



Allow them to stand on their own two feet.

markilux syncra The markilux syncra promises generous shading right where you need it. As a single unit up to 60 m²; as a coupled unit even larger areas are no problem. This free-standing awning literally stands on its own two feet, two round posts or angular supports and a massive cross beam ensures extreme stability. Depending on the requirement, one or two folding arm awnings or markilux pergolas are attached. This awning system is either firmly anchored to the ground (“fix”) or installed using stabilisation boxes (“flex”). No matter which variant you choose, you can count on the markilux syncra.

Dimensions depending on the model up to 60 m², as a coupled unit even larger

Folding arm depends on the model

Options depending on the awning, uno (only one awning/pergola), flex (with stabilisation boxes), coupled unit



markilux syncra uno Two feet. One awning. No problem. The markilux syncra uno proves itself a stable base for one “wing”.



markilux syncra pergola With the additional posts at the front and the lateral cover guidance, this option offers particular advantages in terms of size and wind stability.



markilux syncra flex Stabilisation boxes permit a set-up without concrete foundations at the installation site.



When you need just that little bit more.

markilux RS-2 There are situations where a standard model is not enough to meet your special requirements. In these situations system solutions are required. The frame system markilux RS-2 is extremely versatile and flexible. Different modules unite with different awnings to create a veritable awning landscape. You don't have to make any compromises when it comes to size, and the range of available accessories is impressive. You can choose between round and angular posts. It is almost impossible to describe the markilux RS-2: you just simply have to experience it in your own garden.

- Dimensions** almost unlimited thanks to modular and flexible frame system
- Options** depending on awning model, round posts / angular supports



Clamp rings (round or square) Modular solutions: the fixing rings can be positioned at any height on the support columns.

Designer awnings to your own precise specification Different conservatory and folding arm awnings are possible and can be combined with vertical blinds or side screens according to your wishes.

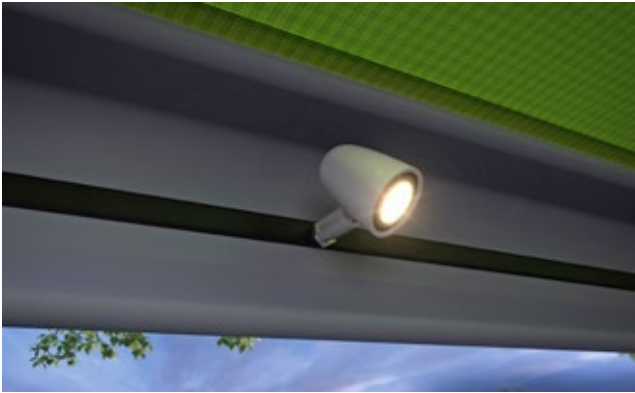






Options, Extras and Overview

Options – variations in specification according to the model.



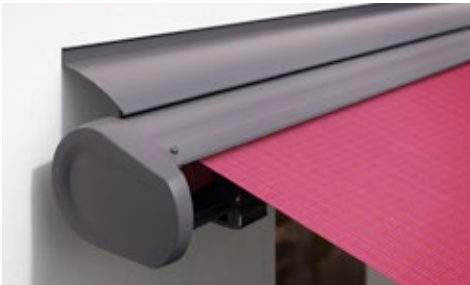
LED lighting options Suspended from the cassette, on the wall or in the front profile: LED spotlights that can be pivoted and dimmed create a lovely atmosphere on your patio in the evening.



stretch The perfect solution for narrow patios, recesses or balconies: thanks to the two crossover arms even awnings with a narrow width can extend further.



Valance The short, decorative piece of fabric suspended from the front profile lends your awning a classic look. Different valance shapes are available.



Wall sealing profile The slim aluminium profile in the awning colour closes the gap between the awning and the wall, allowing the rain to be discreetly drained off the awning.



Polished chrome fittings Stylish end caps and fittings made from polished chrome add a noble look to your awning.



Colour variants and combinations Cassettes and front profiles are available in attractive colours and can be combined at will.



Coupled units Connecting two or more awnings together and operating them simultaneously offers even more shade. In folding-arm awnings a special roller blind in the centre covers the gap between the two awnings.

markilux Shadeplus Simply block out the glare from a low-lying sun and the glances of inquisitive neighbours and capture the warmth of the day in the evening. The additional awning cover is lowered vertically downwards from the front profile to create a wonderfully private room outdoors. Depending on the model, it is also available with a hard-wired motor or with remote control.

It is impossible not to be enthusiastic The numerous markilux options available set new standards for the stylish shading of your favourite spot in the garden. For complete information and competent advice speak to your markilux specialist dealer and got to [markilux.com](https://www.markilux.com)



Accessories – light, warmth and ease of operation make living outdoors truly relaxing.



markilux spotlight LED Turns night into day. The elegant light bar in the matching, powder-coated housing can be mounted anywhere, the lights are pivotable and dimmable and it comes in three standard lengths.



markilux infra-red heater for even longer. It has a long service life, is energy efficient and comes protected in a matching, powder-coated housing. Available in 1400 W or 2000 W.



markilux hotspot Warmth and light that create atmosphere until late in the night. Four halogen spotlights and two infra-red heaters are perfectly combined and protected in a housing that matches the colour of your awning. Can be fitted to any wall.



markilux sun and wind sensor Depending on the current weather situation, this intelligent control system will extend and retract your awning automatically.



markilux sun sensor Intelligent control of your awning depending on the ambient solar light intensity. Independent from the mains thanks to solar cell technology.



markilux rain sensor The awning retracts automatically in the case of precipitation by virtue of this intelligent control mechanism, which protects the awning cover.



markilux vibrabox Intelligent, sensitive and independent from the mains. The vibrabox is an inertia sensor and depending on wind load a motor-driven awning will be retracted automatically to protect it.

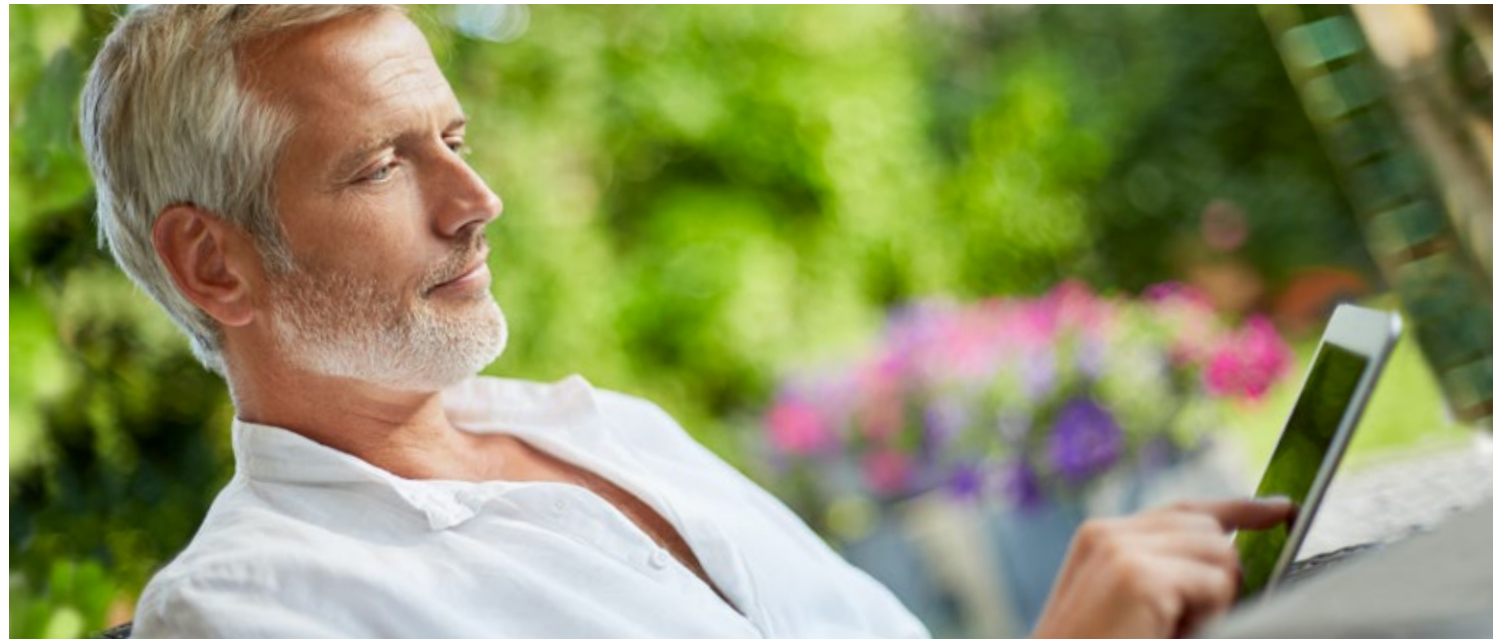
Design your very own outdoors markilux offers the best outdoor living comfort. Your markilux specialist dealer can advise you expertly regarding the options available to you or alternatively go to [markilux.com](https://www.markilux.com)



silentec motor Outrageously quiet. Permanently reduces the noise the motor makes when extending and retracting the awning. Availability depends on model and dimensions.

markilux remote control Comfort can be so easy. Shade, light and warmth at the touch of a button.

Smart control Arrange your own personal patio atmosphere by controlling the awning, the lighting, heating and many more accessories from the comfort of your smart phone or tablet – whether you are relaxing on your patio or away from home.



markilux design awnings

markilux MX-1
The Ultimate One



markilux MX-1 compact
The "Petite" Ultimate One



markilux ES-1
The Unique One



markilux 6000
The Individual One



markilux 5010
The Universal One



markilux 970
The Linear One



Max. width × projection	700 × 437 cm	700 × 415 cm	650 × 300 cm 600 × 350 cm	700 × 400 cm	700 × 400 cm	600 × 300 cm 500 × 350 cm
Operation type optional	Radio-controlled motor* silentec motor	Radio-controlled motor* silentec motor	Radio-controlled motor* hard-wired motor	Manual operation servo manual operation hard-wired motor silentec motor radio-controlled motor*	Manual operation servo manual operation hard-wired motor silentec motor radio-controlled motor*	Manual operation servo manual operation hard-wired motor radio-controlled motor*
Arm technology optional	Bionic tendon	Bionic tendon	Gas piston	Bionic tendon	Twin chain bionic tendon	Bionic tendon
Fixture optional	Face fixture	Face fixture	Face / Top / Eaves	Face / Top / Eaves wall sealing profile	Face / Top / Eaves wall sealing profile	Face / Top / Eaves reveal
Optional accessories **						
	LED line in projection profile	LED line in projection profile	valance	LED spots in projection profile	End caps projection profile in polished chrome	LED spots under cassette
	LED spots in projection profile	LED spots in projection profile		mirror in stainless steel mesh		selectable colour combination
	LED ambient lighting	LED ambient lighting		frame in polished chrome	shadeplus	coloured front profiles
	LED spots in front part	selectable colour combination		shadeplus / drop valance	valance	shadeplus / drop valance
	selectable colour combination	shadeplus / drop valance		valance	coupled unit	
	shadeplus / drop valance	valance		coupled unit		
	valance					
	Page 24	Page 26	Page 30	Page 32	Page 34	Page 36

markilux 990
The Slim One



500 × 300 cm

markilux 3300
The Practical One



700 × 400 cm

markilux 1710
The Classic One



700 × 350 cm
350 × 350 cm (stretch)

markilux 1600
The Elegant One



710 × 400 cm
410 × 400 cm (stretch)

markilux 930
The Mobile One



500 × 300 cm

markilux 1700
The Open One



700 × 400 cm
400 × 400 cm (stretch)

markilux 790
The Upright One



Extension: max. 450 cm
Height: 90 – 250 cm

Manual operation

servo manual operation
hard-wired motor
radio-controlled motor*

Manual operation

servo manual operation
hard-wired motor
radio-controlled motor*
radio-controlled motor*

Manual operation

servo manual operation
hard-wired motor
radio-controlled motor*

Manual operation

servo manual operation
hard-wired motor
radio-controlled motor*

Manual operation

servo manual operation
hard-wired motor
radio-controlled motor*

Manual operation

servo manual operation
hard-wired motor
radio-controlled motor*

Manual operation

Twin chain

bionic tendon

Bionic tendon

Bionic tendon

Twin chain

bionic tendon

Twin chain

Bionic tendon

—

Face / Top / Eaves

wall sealing profile

Face / Top / Eaves

wall sealing profile
reveal

Face / Top / Eaves

wall sealing profile

Face / Top / Eaves

wall sealing profile

Face / Top

Face / Top / Eaves

Face fixture

reveal

end caps in polished chrome

valance

valance

coupled unit

polished chrome end caps

valance

coupled unit

stretch

LED spots in projection profile

end caps in polished chrome

shadeplus / drop valance

valance

coupled unit

stretch

valance

polished chrome end caps

valance

coupled unit

stretch

angled top edge

mobilfix

markilux Awning Systems

markilux pergola



markilux planet



markilux syncra



markilux RS-2



Max. width × projection	500 × 600 cm 600 × 450 cm	600/610 × 300 cm 500/510 × 350 cm	up to 60 m² depending on awning model	almost unlimited
Awning System	Pergola cover guidance by way of lateral guide tracks on slim posts	Awning parasol with one markilux designer awning as desired	Awning stand system with two round / angular posts and one / two markilux designer awnings or pergolas as desired	Frame system modular and flexible,
operation type optional	Motor silentec motor radio-controlled motor*	depending on awning model	depending on awning model	depending on awning model
Arm technology	—	depending on awning model	depending on awning model	depending on awning model
Mounting type	Wall / ceiling wall sealing profile	free-standing on concrete foundation	free-standing on concrete foundation or stabilisation boxes	free-standing on concrete foundation
options	tracfix LED line / LED spotlights shadeplus / drop valance adjustable posts stabilisation boxes base covers square supports coupled unit	depending on awning model flex (335° pivoting) shadeplus / drop valance	depending on awning model uno (with only one awning) flex (with stabilisation boxes) coupled unit	depending on awning model, round posts / angular supports
	Page 56	Page 60	Page 62	Page 64





Ideas, detailed information, professional advice and beautiful awning cover patterns can be found in your specialist dealer's showroom and at markilux.com

markilux.com

markilux
safe timeless beautiful