

MOVABLE WALLS

MOVABLE WALLS	The partitions are made by independent modules which slide along an upper aluminum rail subjected to the forged or resistant structure. Is is not necessary an inferior rail.
UNIDIRECTIONAL	One direction movement
MULTIDIRECTIONAL	Multiple directions movement

	TYPE OF MOVABLE WALLS		
	E68	E84	E88
Thickness (mm)	68	84	88
Type of profile	Aluminium profile	Aluminium profile	Hidden aluminium profile
Height (mm. Min/Max)	2000/4000	2000/6000	2000/4000
Width (mm. Min/Max)	550/1295	550/1295	550/1295
Weight (kg/m2)	40	45	40
Isolation (dBA)	37	41	37
Panel finishes	To choose		
Type of blocking	90° turn		
Acoustic telescopes	Upper, lower and sides		

	E100	E103	E116
	Thickness (mm)	100	103
Type of profile	Hidden aluminium profile	Aluminium profile	Hidden aluminium profile
Height (mm. Min/Max)	2000/4000	2000/9000	2000/6000
Width (mm. Min/Max)	550/1295	550/1295	550/1295
Weight (kg/m2)	40	48	45
Isolation (dBA)	46	49	41/51
Panel finishes	To choose		
Type of blocking	90° turn		
Acoustic telescopes	Upper, lower and sides		

	E135	E145
	Thickness (mm)	135
Type of profile	Hidden aluminium profile	Hidden aluminium profile
Height (mm. Min/Max)	2000/9000	2000/9000
Width (mm. Min/Max)	550/1295	550/1295
Weight (kg/m2)	48	51
Isolation (dBA)	49	54
Panel finishes		
Type of blocking	90° turn	
Acoustic telescopes	Upper, lower and sides	

MODULES BLOCKING	<p>In order to block each module it is necessary to turn the extension of the telescopic sleepers. Its operation is carried out by introducing a turning lever on the edge of each module and rotating it half a turn.</p> <p>For the locking of the last module with added telescopic side crossbeam, the drive is carried out at the front of the module.</p>
-------------------------	---

PANEL FINISHES	<p>LAMINATED</p> <p>PVC</p> <p>STRATIFIED</p> <p>MELAMINE</p> <p>FINE WOODS</p> <p>CHIPBOARD</p> <p>TEXTILE</p>
-----------------------	---

TECHNICAL SHEET

RAIL	MATT SILVER LACQUERED ALUMINIUM
BEARING	SELF-LUBRICATED POLYMER
UPPER, SIDE AND LOWER SLEEPERS	ANODISED ALUMINIUM PROFILES EPDM RUBBER
ACOUSTIC ISOLATION	In order to achieve a perfect acoustic isolation it is recommended to place a phonic barrier from the rail to the forged. In case of false ceiling the phonic barrier it is placed from the false ceiling to the forged. In case of raised floorings, it must have a phonic barrier between the raised flooring and the lower forged. (*)

(*) OPTIONAL (Consult price and delivery time)

UNIDIRECTIONAL SYSTEM

- System with a unique unidirectional rail through the suspended modules are moved with a single "bogie" bearing with four self-lubricated cushions. The module storage take place anywhere along the rail.

RAIL

Anodized or lacquered aluminium profile, semi-tubular, fixed to the upper support (forged, beams, etc) by suspension plates linked with threaded rods, achieving its correct leveling.

BEARING

Central group, fixed to the module axis n grupo central, fijado al eje del módulo, and formed by 4 polymer-coated bearings, allowing smooth and silent slides. Does not require greasing or maintenance.

STRUCTURE

Profiles, uprights and crossbar in anodized aluminum or lacquered self-supporting to ensure effective protection of the edges of the modules. Hidden grid or seen grid.

PANELS

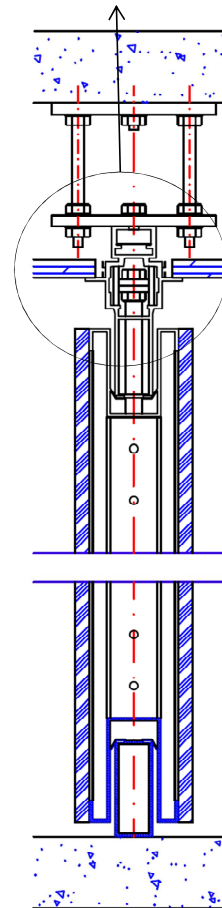
Consisting of two 16 mm thick panels clad or clad in wood, laminate, melamine, vinyl siding, upholstery, etc. Gross can be delivered to paint, lacquer, wallpaper or upholstery. The interior space between boards includes high density rock wool. The edges of the boards are protected around the perimeter by the aluminum profiles.

BLOCKING

Fast and simple by turning ¼ turn with the locking key applied to the drive shaft located on the edge of each module. This operation releases the upper and lower telescopic sleepers that fix the module. In the last module, the drive is frontal and retracted (by one or two sides) and the lock releases the telescopic side of the wall at the same time.



Monodirectional

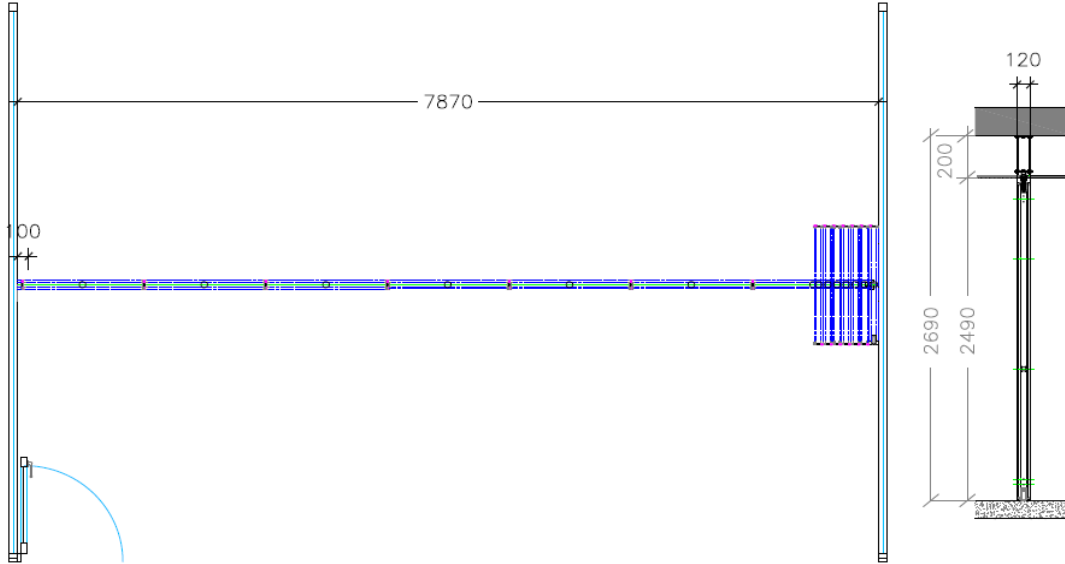


Section monodirectional rail

MOVABLE WALLS PARKING, UNIDIRECTIONAL SYSTEM

SIST

- Sist



MULTIDIRECTIONAL SYSTEM

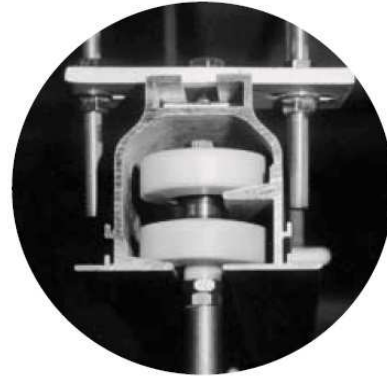
- Main multidirectional system with main and secondary rails. The modules move through the rails, suspended by two sets of self-lubricating polymer horizontal bearings. Storage can be done anywhere by moving the modules through the auxiliary lanes.

RAIL

Anodized or lacquered aluminium profile, semi-tubular, fixed to the upper support (forged, beams, etc) by suspension plates linked with threaded rods, achieving its correct leveling.

BEARING

Central group, fixed to the module axis, and formed by 4 polymer-coated bearings, allowing smooth and silent slides. Does not require greasing or maintenance.



Multidirectional rail

STRUCTURE

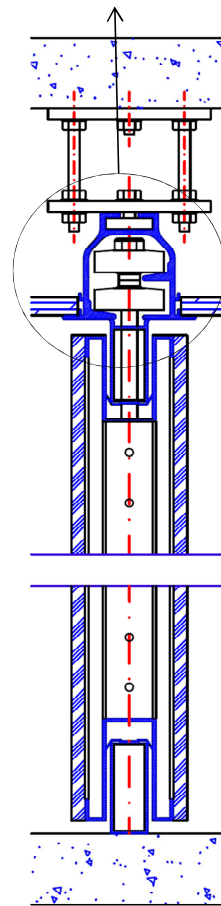
Profiles, uprights and crossbar in anodized aluminum or lacquered self-supporting to ensure effective protection of the edges of the modules. Hidden grid or seen grid.

PANELS

Consisting of two 16 mm thick panels clad or clad in wood, laminate, melamine, vinyl siding, upholstery, etc. Gross can be delivered to paint, lacquer, wallpaper or upholstery. The interior space between boards includes high density rock wool. The edges of the boards are protected around the perimeter by the aluminum profiles.

BLOCKING

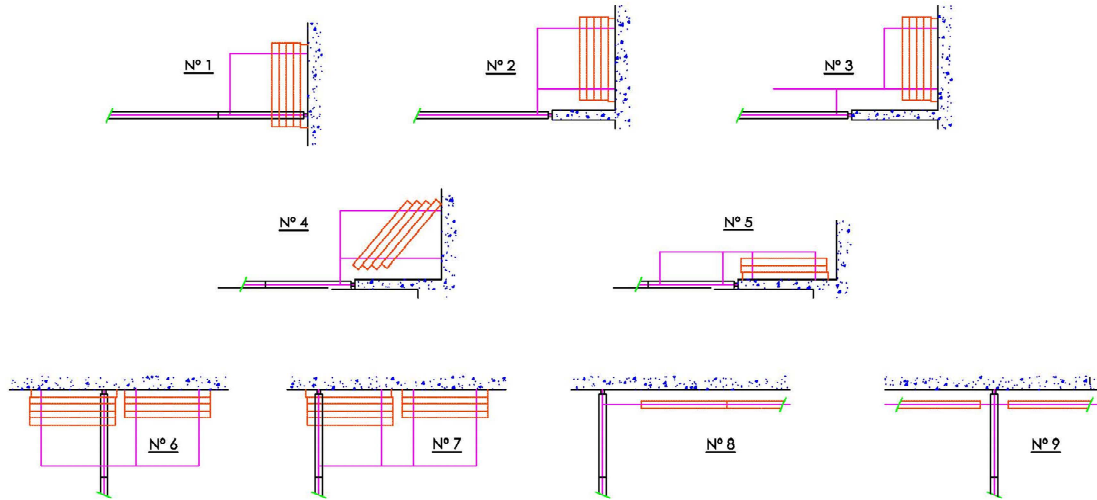
Fast and simple by turning ¼ turn with the locking key applied to the drive shaft located on the edge of each module. This operation releases the upper and lower telescopic sleepers that fix the module. In the last module, the drive is frontal and retracted (by one or two sides) and the lock releases the telescopic side of the wall at the same time.



Section multidirectional rail

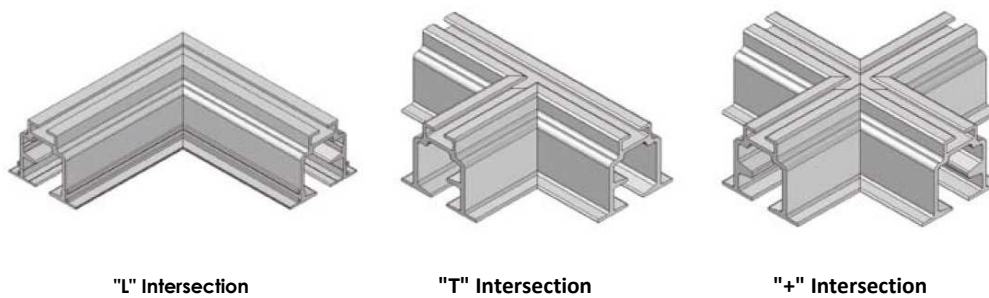
MOVABLE WALLS PARKING, MULTIDIRECTIONAL SYSTEM

- The multidirectional movable wall parking depends on the needs of the client.

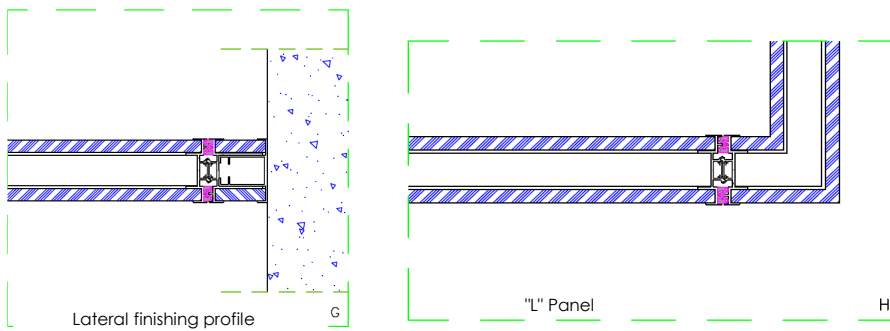
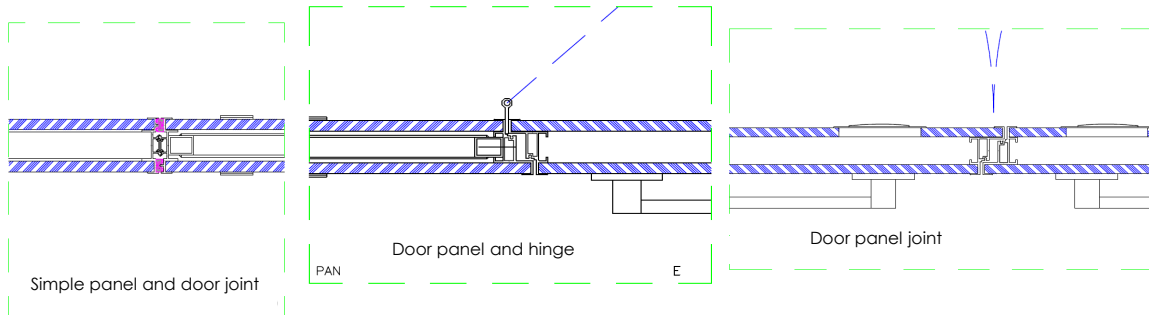
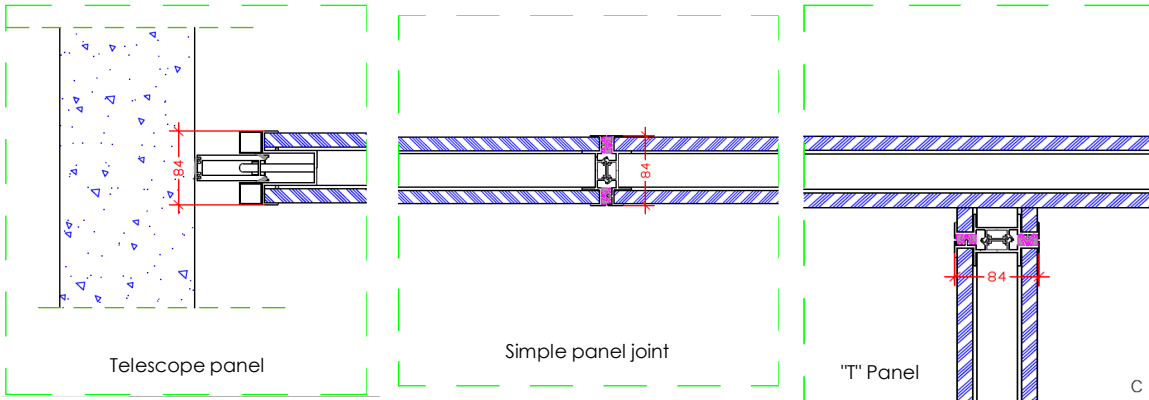
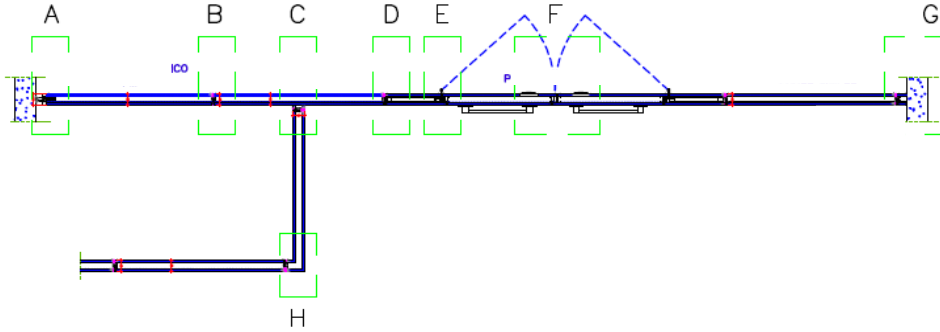


MULTIDIRECTIONAL RAIL INTERSECTIONS

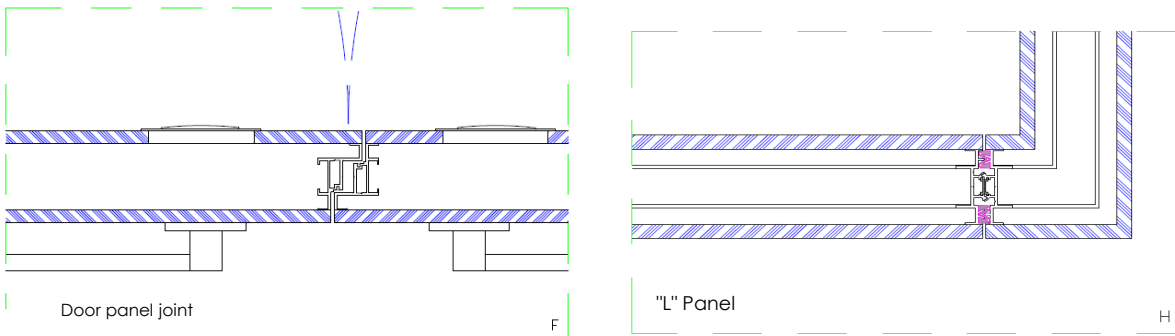
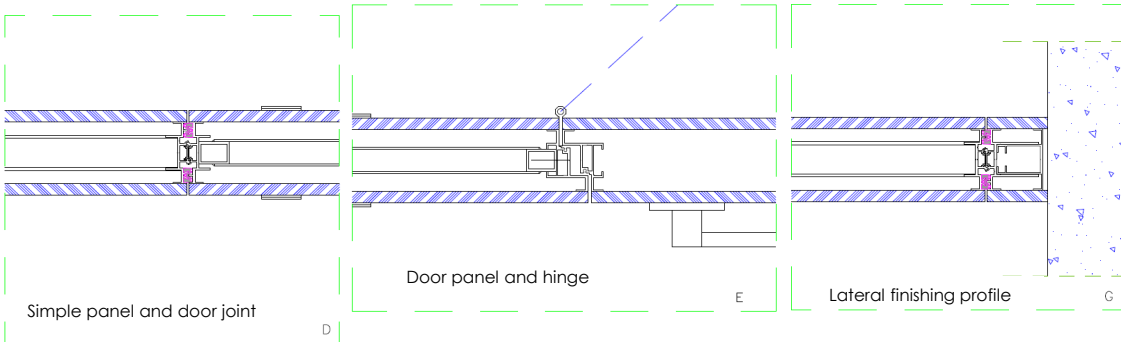
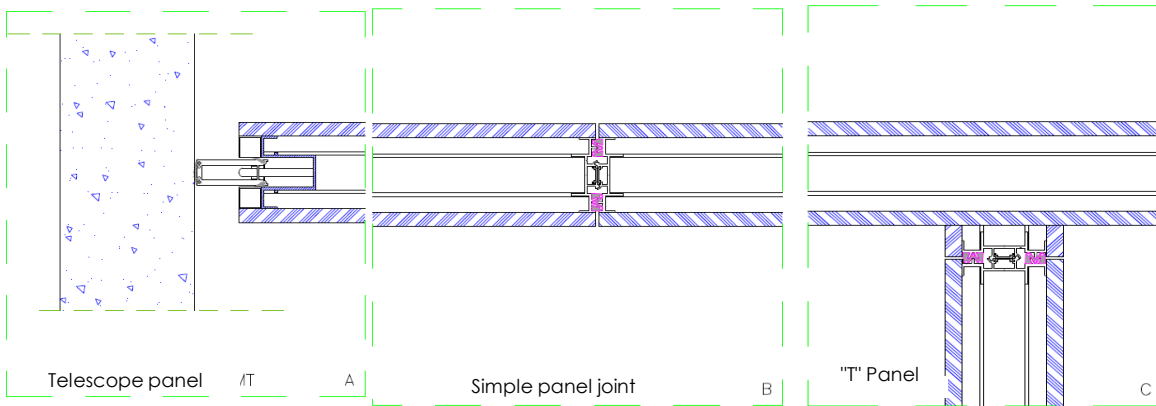
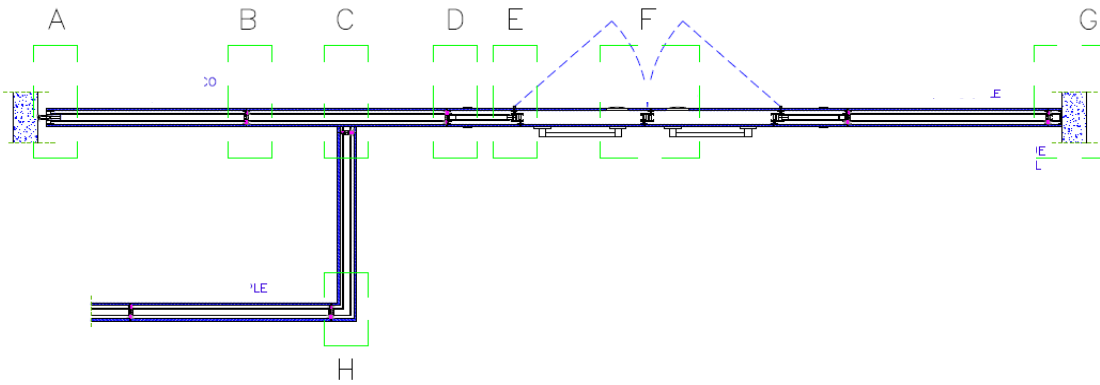
- The most usual intersections are in L form. T form and + form. The intersection with + form, must be avoided in the main lanes to create a sound bridge. They are only recommended for storage areas.



MULTIDIRECTIONAL RAIL DETAILS 84 mm Aluminium profile



MULTIDIRECTIONAL RAIL DETAILS 116 mm Hidden aluminium profile



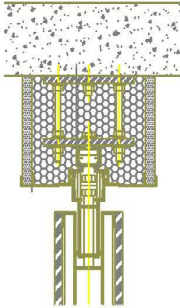
INSTALLATIONS IN MOVABLE WALLS

SOUND BARRIER

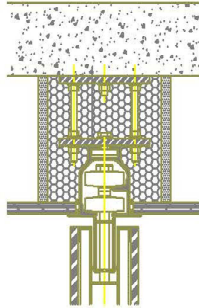
- A good installation of mobile partitions requires the placement of the appropriate sound barrier between the floor and false ceiling and, if there is a technical floor, between it and the interior floor. If there is no false ceiling, the phonic barrier will be replaced by a false jácena that guarantees the absence of any phonic bridge from the lower part of the rail to the slab. If there are technical floors, you should also place a phonic barrier between them and the lower floor.

The sound barriers are constituted by a sandwich formed by two plates of agglomerate or cardboard-gypsum and rock wool in its interior.

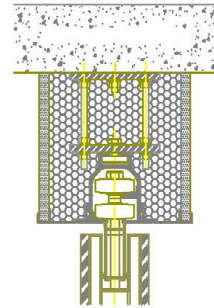
MONODIRECTIONAL RAIL
Assembly: False Ceiling - Forged



MULTIDIRECTIONAL RAIL
Assembly: False Ceiling - Structure



MULTIDIRECTIONAL RAIL
Assembly: False Ceiling - Structure



FIXING AND LOCKING SYSTEM AND MECHANISM

- The locking of each module is achieved by the extension of the upper and lower telescopic crossbeam. Its operation is carried out by introducing a turning lever on the edge of each module and rotating it half a turn. For locking the last module with added telescopic side crossbeam, the drive is carried out on the front of the module, guaranteeing acoustic sealing of the mobile partition.



TECHNICAL SHEET

DOORS (SIMPLES, DOUBLES AND HINGED)

For the installation of mobile partitions, doors must be kept in mind, since they reduce the isolation of the entire system.

- There are three types of door:

• **SINGLE LEAF SIMPLE DOOR:**

The size of the leaf is 800 mm wide and 2100 mm high. The module that contains it is 1200 mm wide.



• **DOUBLE DOOR FORMED BY TWO SIMPLE MODULES:**

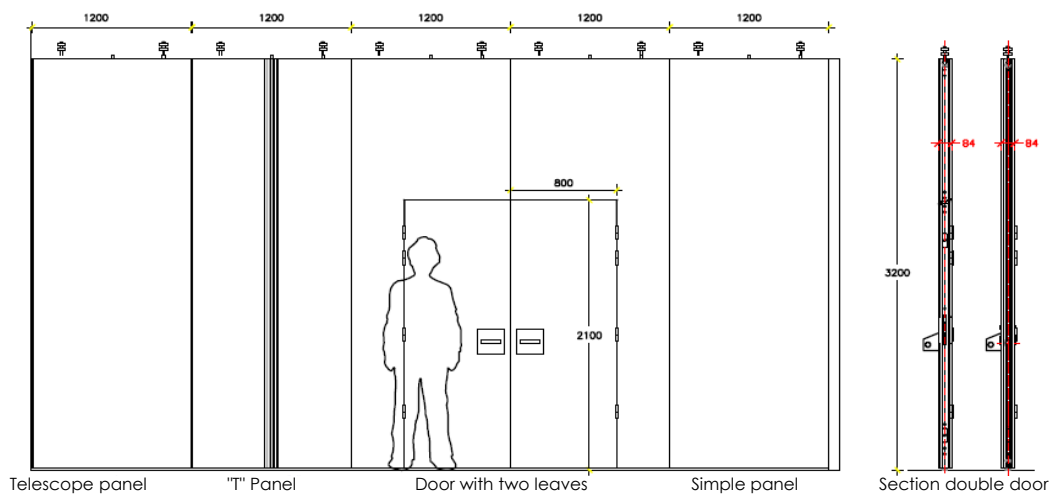
This door contains two simple modules of 800 mm leaf with a total free width of the double door equal to 1600 mm

• **HINGED MODULE:**

A whole module acts as a door. Its width of step is of 900 mm and its maximum height around 3m. Higher heights makes the leaf very heavy and aesthetically it is not the most adequate solution.



The doors can be supplied with panic barriers and closing key.



TECHNICAL SHEET

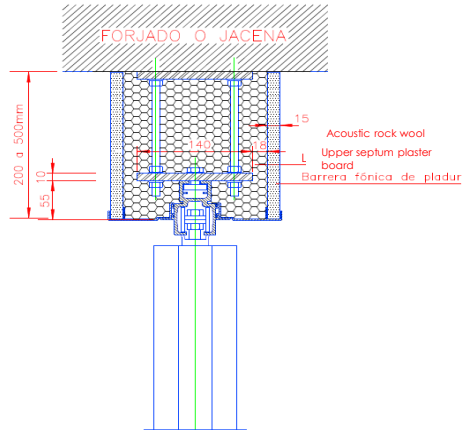
SUBJECTION MOVABLE WALL

PUEI

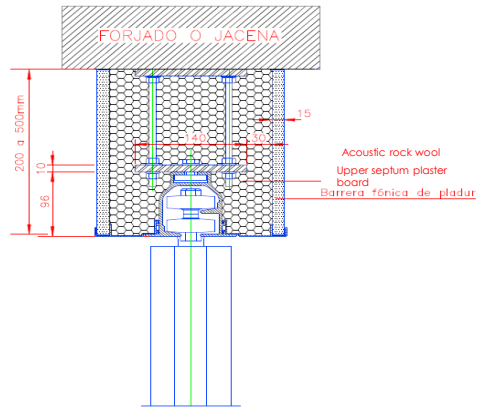
The minimum distance of forged to false ceiling for fixing mobile partitions is 200 mm. They can be fixed to the forged or Para beams. The rail can go between stools or inside false ceiling.

With upper plaster board or wood board

• **UNIIRECTIONAL:**



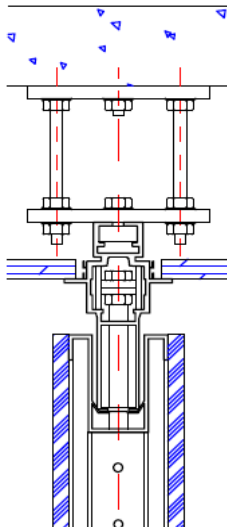
• **MULTIDIRECTIONAL:**



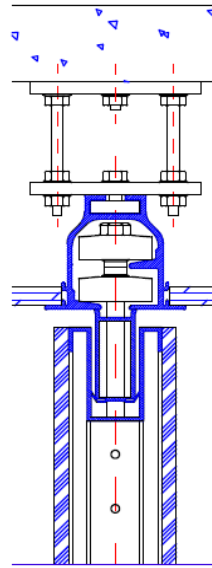
Note: It is possible to have the same finish in the upper part as the movable wall or plaster board.

With false ceiling

• **UNIDIRECTIONAL:**



• **MULTIDIRECTIONAL:**



PRODUCTION DEPARTMENT	TECHNICAL OFFICE	COMMERCIAL DEPARTMENT
DATE	DATE	DATE