

# LED DOWNLIGHT ADVANCE 160 CRI90

### Luminaire body

Comprises outer ring made of die-cast aluminium stove-enamelled in white. On request it can be supplied in any colour from the RAL chart.

Recessed mounting by fixing strings included in the standard delivery. Minimum ceiling thickness (5-7 mm).

Power supply: 220-240 V / 50-60 Hz. On request: 110-240 V / 50-60 Hz.

Light source with an electronic protection against overheating.

○ Ceiling cut: 160 mm.

### Optics

New technology of PHI reflectors of high performances for an optimal optic distribution with Flood light beam.

Inner diffuser with BRIGHT LIGHT technology.

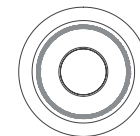
High visual comfort with glare limitation.

High glossy reflector made of vaporized aluminium with a glare limitation of L <1,000 cd/m<sup>2</sup> at 65° from the vertical for UGR 19 for office use.

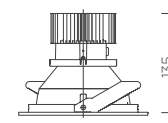
Light source: LED930/LED940 with high selection of binning (3 step) that guarantees the light output emitted and the colour temperature declared.

### Dimensions

Measures in mm



174

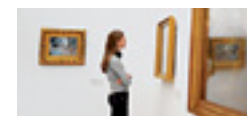


174

### Applications



Retail



Showrooms / Cultural centres



Laboratories



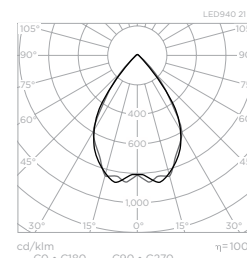
Offices



Schools / Training centres

### Luminaires

Light source	W	Colour temp.	CRI	Light output	Kg	References: Non dimmable	Dimmable DALI
<b>ADVANCE 160 CRI90 IP40</b> • Recessed downlight with high glossy reflector made of vaporized aluminium. White colour							
<b>UGR19 Version</b>							
LED930	21	3,000 K	>90	1,610 lm	0.85	001725	001727
LED940	21	4,000 K	>90	1,610 lm	0.85	001726	001728
<b>UGR20 Version</b>							
LED930	31	3,000 K	>90	2,387 lm	0.85	001733	001735
LED940	31	4,000 K	>90	2,387 lm	0.85	001734	001736



### Comparative chart

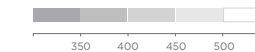
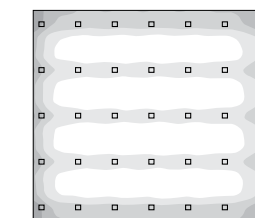
Lighting results	Downlight 2 TC-TELI 26 W	ADVANCE 160 CRI90 LED940 21 W
VEE (W/m <sup>2</sup> )	21	7.56
VEEI (W/m <sup>2</sup> /100 lux)	4.39	1.50
Em (lux)	500	505
Emin/Em	0.55	0.65
UGR	19	19

### Solution

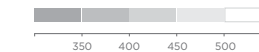
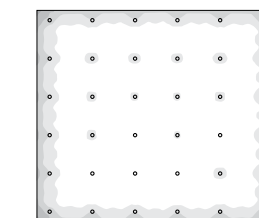
#### General lighting

Measure conditions	
Local height	2.8 m
Luminaire mounting height	2.8 m
Area	100 m <sup>2</sup>
Maintenance factor	0.80
Reflection factor	70/50/20

#### Current solution Office



#### Proposed solution Office



Installed power **2,100 W**

**756 W**

Installed power **-65%**



# ADVANCED TECHNICAL SOLUTION

