

LED DOWNLIGHT ADVANCE 120 CRI90

Luminaire body

Comprises outer ring made of die-cast aluminium stove-enamelled in white. On request it can be supplied in any colour from the RAL chart.

Recessed mounting by fixing strings included in the standard delivery. Minimum ceiling thickness (5-7 mm).

Specific versions in IP54 degree of protection on visible side.

Power supply: 220-240 V / 50-60 Hz. On request: 110-240 V / 50-60 Hz.

Light source with an electronic protection against overheating.

○ Ceiling cut: 120 mm.

Optics

New technology of PHI reflectors of high performances for an optimal optic distribution with Flood light beam.

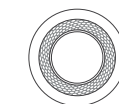
Inner diffuser with BRIGHT LIGHT technology.

High visual comfort with glare limitation.

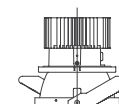
Light source: LED930/LED940 with high selection of binning (3 step) that guarantees the light output emitted and the colour temperature declared.

Dimensions

Measures in mm



128



120

128

Applications



Retail



Showrooms / Cultural centres



Laboratories



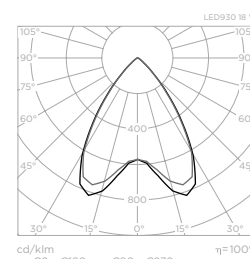
Offices



Schools / Training centres

Luminaires

Light source	W	Colour temp.	CRI	Light output	Kg	References:	Non dimmable	Dimmable DALI
ADVANCE 120 CRI90 IP40 • Recessed downlight with high glossy reflector made of vaporized aluminium. White colour								
LED930	18	3,000 K	>90	1,160 lm	0.75	001693		001695
LED940	18	4,000 K	>90	1,160 lm	0.75	001694		001696
LED930	21	3,000 K	>90	1,450 lm	0.75	001697		001699
LED940	21	4,000 K	>90	1,450 lm	0.75	001698		001700
ADVANCE 120 CRI90 IP54 • Recessed downlight with high glossy reflector made of vaporized aluminium. White colour								
LED930	18	3,000 K	>90	990 lm	1.0	001737		On request
LED940	18	4,000 K	>90	990 lm	1.0	001738		On request
LED930	21	3,000 K	>90	1,305 lm	1.0	001739		On request
LED940	21	4,000 K	>90	1,305 lm	1.0	001740		On request



ON REQUEST:

Comparative chart

Lighting results	Downlight 2 TC-TELI 26 W	ADVANCE 120 CRI90 LED940 18 W 4,000 K
VEE (W/m²)	6.72	2.16
VEEI (W/m²/100 lux)	4.68	1.63
Em (lux)	143	135
Emin/Em	0.42	0.42
UGR	22/22	19/19

Solution

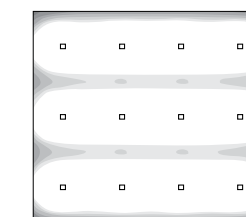
General lighting

Measure conditions

Local height	3 m
Luminaire mounting height	3 m
Area	100 m²
Maintenance factor	0.80
Reflection factor	70/50/20

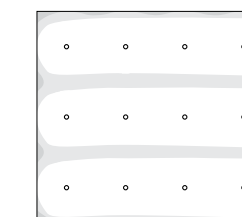
Current solution

Corridor areas/
entrance hall



Proposed solution

Corridor areas/
entrance hall



Installed power

672 W

216 W

Installed power **-68%**



COMPACT DESIGN WITH CHROMATIC EFFICIENCY

