



Lindab Rainline™

Lindab Roof Drainage System

The STEEL rainwater system with the low CO₂ footprint



About Lindab

With over half a century of experience in the development, manufacturing and marketing of sheet-metal products, Lindab has become one of the leading international players in the construction and HVAC industries.

In 1957 Lindab started out as a small sheet-metal shop in Lidhult Sweden. In 1958 Lindab moved to Båstad on the Bjäre Peninsula in the south west of Sweden, where we are still situated today. Lindab has since expanded to a worldwide business with representation in 31 countries.

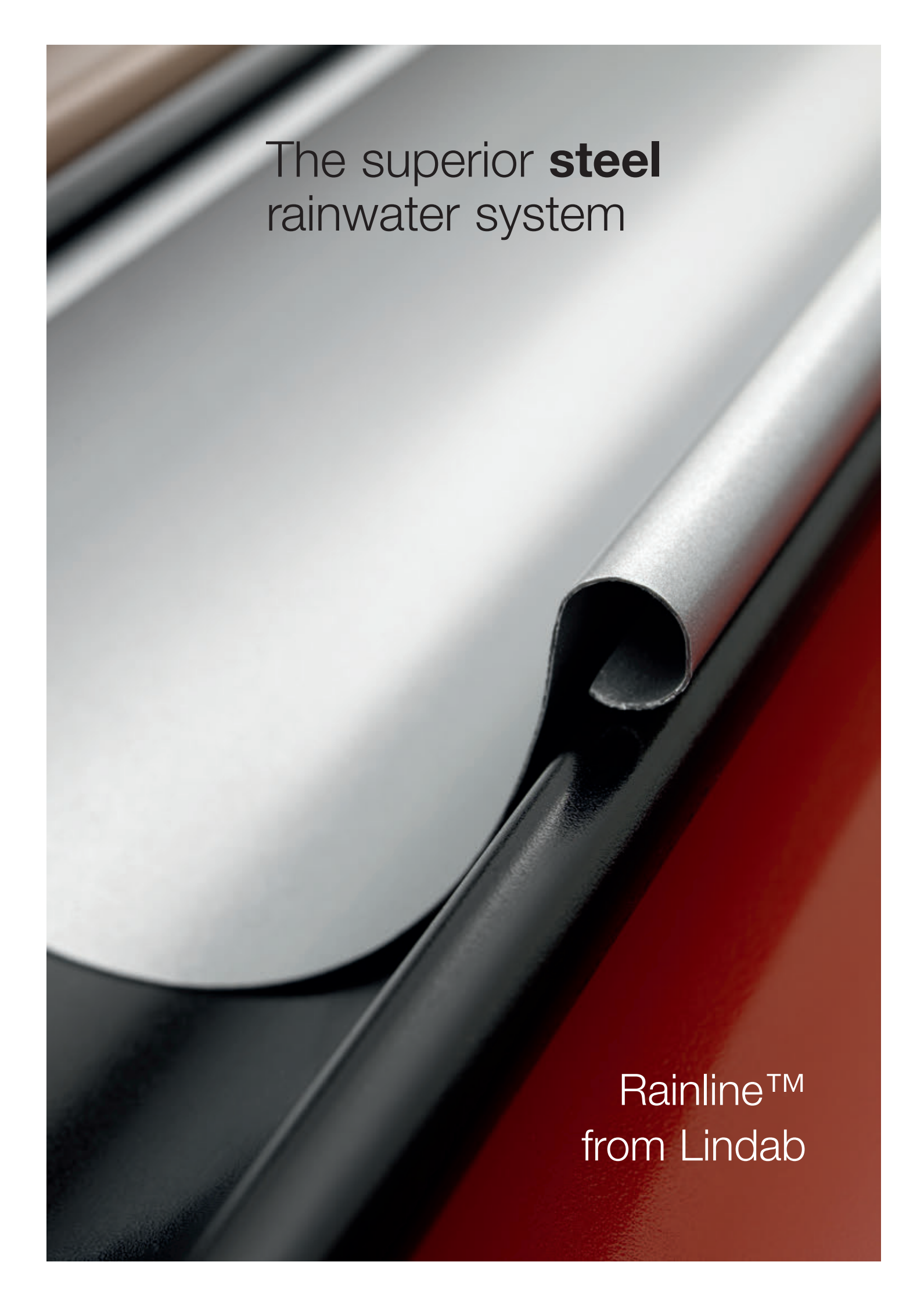
Lindab naturally

Lindab's business is based on long-term sustainable and environmentally friendly systems in steel and sheet metal. We focus on minimizing the use of raw materials, components, energy, packaging and transport. Today 90 per cent of our operations are certified according to ISO 14001. A full environmental declaration is available on request.

Lindab – a worldwide company

- 128 locations in 31 countries
- Local production units in 18 countries
- Over 1,000 Lindab distributors cover Europe and eastern/central USA
- Employs over 4,000 people
- Head Office on the beautiful Bjäre Peninsula in the south west of Sweden



A close-up photograph of a steel rainwater pipe joint. The pipe is dark grey or black, and the joint is shown in a way that highlights the precision of the connection. The background is a gradient of light grey to white, with a red diagonal band in the bottom right corner.

The superior **steel**
rainwater system

Rainline™
from Lindab

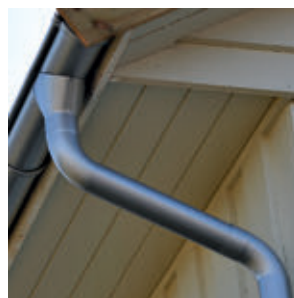
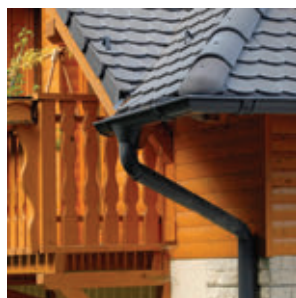
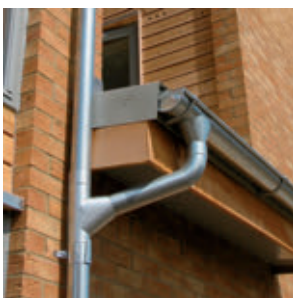
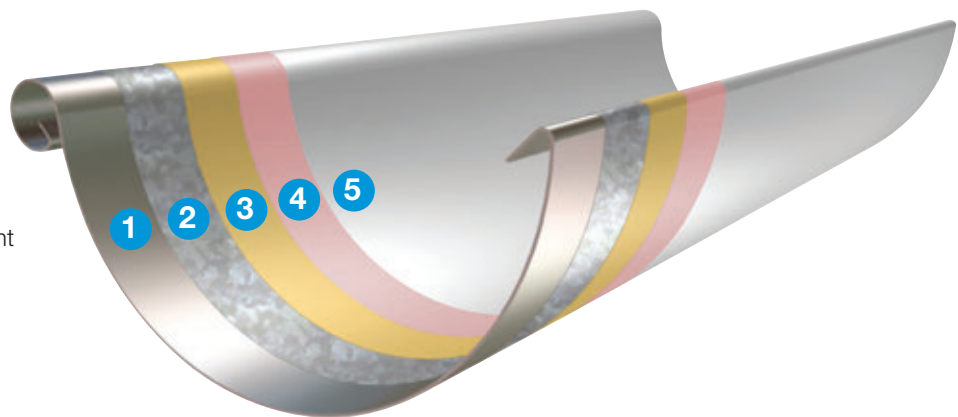
The steel rainwater system with the lowest CO₂ footprint

Lindab Rainline is the rain drainage system that offers the highest quality, with the lowest CO₂ footprint of any other system.

Rainline has been developed by professionals to combine durability, flexibility and ease of installation – and with steel's low lifetime CO₂ impact, it promises decades of performance.

A policy of continual research and development has made Rainline steel systems the top choice for countless installers worldwide.

- 1 Steel sheet
- 2 Zinc coating
- 3 Passivation layer
- 4 Primer coating
- 5 High-build polyester paint



Features and benefits of Lindab Rainline

Made to last with the lowest environmental impact

Steel is the ultimate material for roof-drainage systems. It is much lighter than cast iron, easier to handle than aluminium and offers minimal thermal movement compared to plastic (which can move and crack causing leaks). Lindab's steel also has the lowest CO₂ impact of any competitor.

Lindab Rainline requires no sealants in its installation further reducing its environmental impact and eliminating possible future issues of cracking and shrinkage.

Low maintenance

The only maintenance required is an occasional wipe or wash down guaranteeing a long service life.

Vandal resistant

Highly resistant to attack from vandals – can be fixed flush to a wall to prevent anyone climbing up the downpipe.

Material and colour choice

Rainline is available in a choice of 10 standard colours (high-build polyester paint finishes) as well as plain galvanised. Coated finishes are UV stable – will not fade or crack. The whole system is also available in pure natural copper.

15-year guarantee

Lindab Rainline High-Build Polyester coated products all come with a **15 year guarantee***. As long as installation and warranty conditions have been followed any defects to the coating will be replaced.

Choice of 4 sizes

Lindab Rainline is available in a choice of 4 sizes to suit different roof sizes and prevailing local rainfall patterns.

Plain galvanised material is not advised for projects in coastal regions where salt water can have a corrosive reaction. In these instances coated systems should be used.

Stylish design for a variety of buildings

Designed for large or small, classic or contemporary.

Cost-effective solution

Competitively priced against leading plastic systems and inexpensive compared with aluminium and cast iron.

Minimum environmental impact

Tests have proven that Rainline steel systems reflect the lowest lifespan impact by minimizing the use of raw materials, components, energy, packaging and transport.



* Galvanised finish is excluded from 15 year warranty.



A few words about steel – a life cycle of green performance

Lindab’s steel rainwater system has proved itself to be the most environmentally friendly material available, with a natural place in today’s approach to green sustainability.

A study on the life cycle assessment of rainwater products in different materials has compared the environmental impact of products, processes and disposal of seven different materials, covering their entire life cycle from cradle-to-grave. This study covers materials frequently used in rainwater products such as aluminium, zinc, copper, cast iron, galvanised steel and plastic. This life cycle comparison includes the steps taken up until a product leaves the factory gate; of extraction of raw materials, production, energy used, including transport, plus disposal, recycling or waste treatment after use. The environmental impact of all seven materials clearly shows that Lindab’s steel, in a product life cycle study, has the lowest carbon footprint of any of its competitors.



Lindab’s steel is the ultimate material for roof drainage systems. It is strong, durable and made to last.

The carbon footprint of steel

Lindab’s steel has the lowest carbon footprint of any rainwater system, with up to 30% manufactured from recycled material, which is itself completely recyclable. The case for Lindab’s steel is further proven with its long-life durability. The useful life of a component is of vital importance; the longer the lifetime, the fewer components need to be produced, making the environmental impact even less.

Life expectancy of various guttering materials

Pipe dimension (mm)	Material	Weight (kg/metre)	Expected lifetime (years)
75	Galvanised steel	1.29	70
76.5	Aluminium	1.28	40
75	Zinc	1.45	50
75	Copper	1.45	50
75	Cast iron	6.61	50
68	PVC	0.58	10
68	PE	0.48	10

A more environmental focus

To accurately establish the environmental impact of Lindab’s steel in comparison with other rainwater materials, a functional unit of one metre of downpipe, in seven different materials, was assessed and compared. The comparison considered the cradle-to-grave carbon impact, making allowance for the different lifespan of each material. The chart on the left lists the data and expectations used as input in the comparison.





Increasingly customers are asking for the carbon footprint of products, in order to determine how far they contribute to climate change.

Product life cycle CO₂ impact

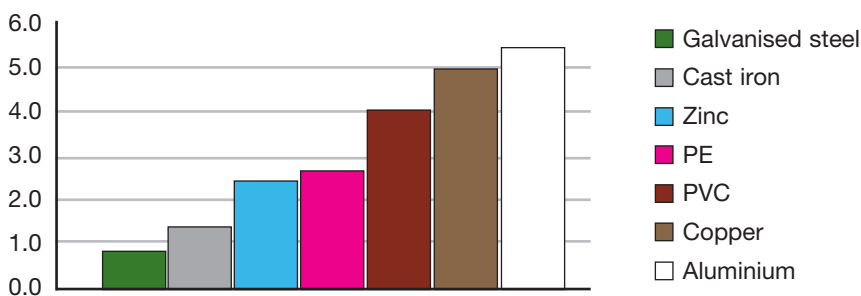
The Lindab steel product life cycle CO₂ study has highlighted how current CO₂ levels are 30% higher than in the pre-industrial era and how a doubling of levels in the atmosphere is expected to occur over the next century. The impact and implications of such changes are far-reaching.

It is with this in mind that Lindab strives to minimise the environmental impact caused by the company's operations and products; this environmental commitment means that products are developed based upon a life cycle perspective, with set targets for continual improvements.

Every component in the Lindab Rainline™ System is manufactured to the highest standards and simply snaps together for ease of installation.



Lindab steel – a green effect on today's environment



(GRW) Global Warming Potential relative comparison

As our study shows, all metals in the comparison have advantages over plastic materials when it comes to recycling with steel performing the best of all.

An elegant finish

Lindab Rainline™ is available in a choice of ten different colours. Each is coated with extra durable high-build polyester paint for an attractive, elegant and long-lasting finish. Alternatively Rainline™ is available in plain galvanised or for that totally individual look Lindab Rainline™ can also be supplied in natural copper.



Antique White
RAL 9002

Black
RAL 9005

Silver Metallic
RAL 9006

Brown
RAL 8017

Dark Grey
RAL 7011

Copper Metallic
RAL 8003

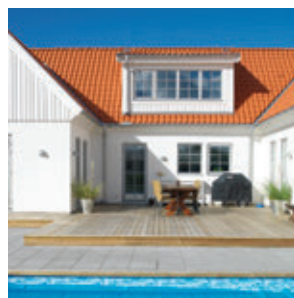
Tile Red
RAL 8004

Dark Red
RAL 3009

Anthracite Metallic
RAL 9007

Pine Green
RAL 6020

NB: RAL codes are nearest available colour match. For true colour please request a colour sample.



Lindab Ltd
Building Products Division
Shenstone Trading Estate
Bromsgrove Road
Halesowen
West Midlands
B63 3XB

Tel: (0121) 585 2780
Fax: (0121) 585 2782
Email: buildingproducts.sales@lindab.co.uk
Web: www.lindab.co.uk/rainline