



Lindab Rainline™

## Lindab Roof Drainage System

The STEEL rainwater system with the low CO<sub>2</sub> footprint



# About Lindab

With over half a century of experience in the development, manufacturing and marketing of sheet-metal products, Lindab has become one of the leading international players in the construction and HVAC industries.

In 1957, Lindab started out as a small sheet-metal shop in Lidhult, Sweden, and in 1958 moved to Båstad, on the Bjäre Peninsula in the south west of Sweden, where Lindab is still situated today.

Lindab has since expanded to a worldwide business with representation in 31 countries.

## Lindab naturally

Lindab's business is based on long-term sustainable and environmentally friendly systems in steel and sheet metal. We focus on minimizing the use of raw materials, components, energy, packaging and transport. Today 90 per cent of our operations are certified according to ISO 14001. A full environmental declaration is available on request.

## Lindab – a worldwide company

- 128 locations in 31 countries
- Local production units in 18 countries
- Over 1,000 Lindab distributors cover Europe and eastern/central USA
- Employs over 4,000 people
- Head Office on the beautiful Bjäre Peninsula in the south west of Sweden



# We're here to help with advice and assistance

At Lindab Building Products, our aim is to match the reliability of our products with that of our service. Customer support is a core part of our business philosophy.

We are proud of the relationships we have developed with local authorities, housing associations, exclusive developers, contractors and end-users across the UK. We have only done this by adopting the right approach to both customers and end-users, and a focus on delivering products with a low CO<sub>2</sub> impact.

## Office support

We have dedicated customer support at our UK Head Office in the Midlands which can provide you with technical assistance, quotes, order entry and problem-solving solutions just by picking up the phone. Send us your building drawings and we will even do a "product take-off" for you free of charge.

## Field Support

We have a dedicated team of Area Managers who have been trained to the highest degree on our Rainwater System. Our team is available to visit you either on site or in your office/premises. We will give you full technical support on site and work closely with your designated contractor. Our team can also offer product demonstrations / seminars / CPDs at your place of work to enable you to make the right choice.

## Distribution

We can normally deliver standard items to you within 3-5 working days. Deliveries are made directly from our distribution centre in the Midlands.



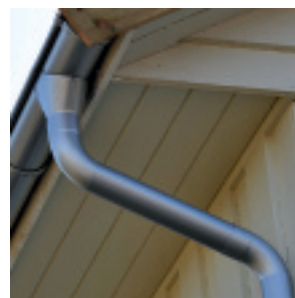
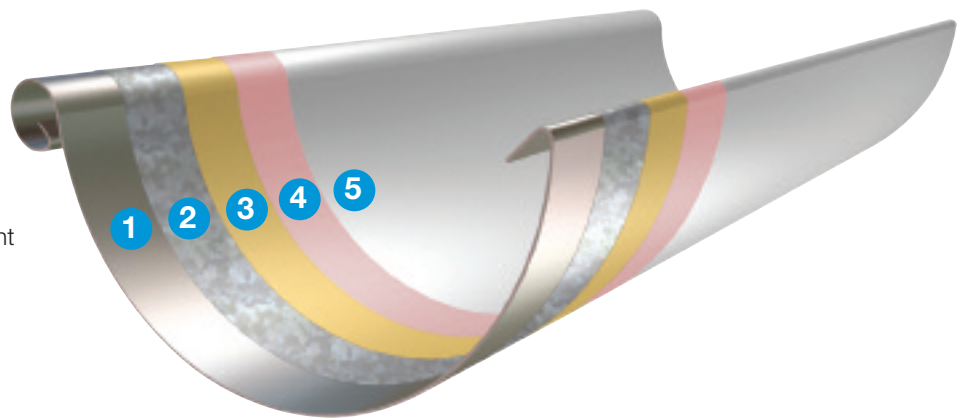
# The steel rainwater system with the lowest CO<sub>2</sub> footprint

Lindab Rainline is the rain drainage system that offers the highest quality, with the lowest CO<sub>2</sub> footprint of any other system.

Rainline has been developed by professionals to combine durability, flexibility and ease of installation – and with steel's low product life cycle CO<sub>2</sub> impact, it promises decades of performance.

A policy of continual research and development has made Rainline steel systems the top choice for countless installers worldwide.

- 1 Steel sheet
- 2 Zinc coating
- 3 Passivation layer
- 4 Primer coating
- 5 High-build polyester paint



# Extra durable high-build polyester paint

Lindab Rainline™ is available in a choice of ten different colours. Each is coated with an extra durable high-build polyester paint for an attractive and elegant finish. For a totally individual look Lindab Rainline™ can also be supplied in natural copper.



**Antique White**  
RAL 9002

**Black**  
RAL 9005

**Silver Metallic**  
RAL 9006

**Brown**  
RAL 8017

**Dark Grey**  
RAL 7011

**Copper Metallic**  
RAL 8003

**Tile Red**  
RAL 8004

**Dark Red**  
RAL 3009

**Anthracite Metallic**  
RAL 9007

**Pine Green**  
RAL 6020

**NB:** RAL codes are nearest available colour match. For true colour please request a colour sample.



# Beautiful and durable, year after year

Whether you're designing a luxury villa, a townhouse, or a multi-occupancy development Lindab Rainline has a product to fit the bill.

Available in a choice of 10 colours, Lindab's 5 layer build process starts with quality steel which is then zinc coated before the application of a passive layer, a primer layer and then the final high build polyester paint

finish. These protective processes result in an incredibly stable product finish which does not succumb to attacks from wind, rain or UV and is backed by our **15 year guarantee.\***

\* Excludes galvanised



# Practical and adaptable

Lindab Rainline is the perfect choice for industrial, commercial or agricultural buildings, its strength and durability making it highly resistant to knocks and bumps or vandals.

Steel has an extremely low coefficient of thermal expansion making it less prone than plastic to leakage caused by deformation during spells of hot or

cold weather and with no sealants required in its installation you can be assured that Lindab Rainline will provide years of leak free service.



# When you need that something a bit special...

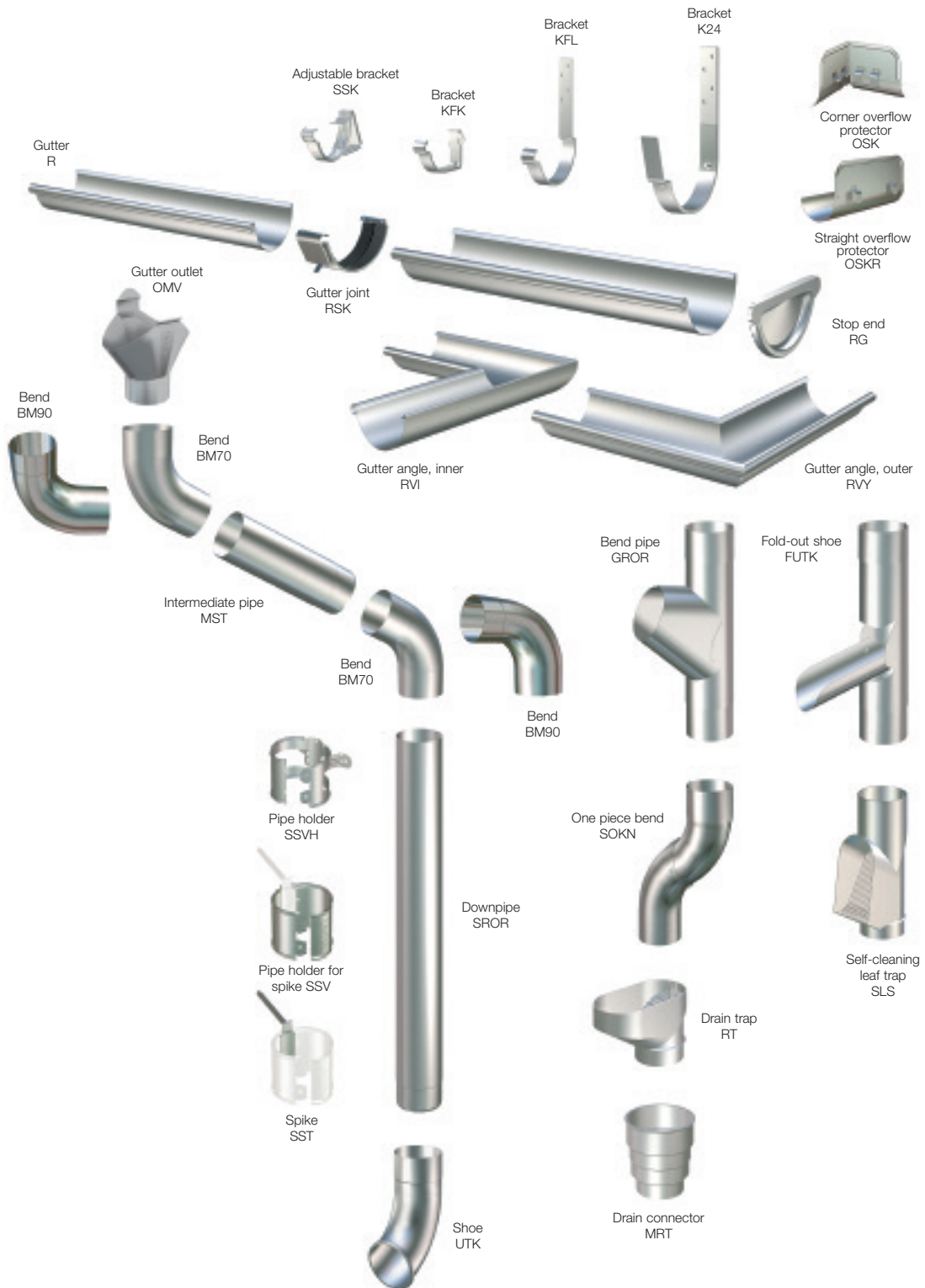
Lindab Rainline Copper metallic finish transforms a guttering system into a feature that gives the whole building a boost.

The strong surface coating ensures that the stunning copper look is maintained year after year, without the

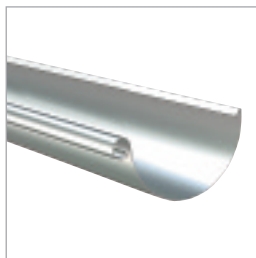
verdigris or oxidization associated with natural copper and all at the fraction of the price.



# A complete range of components



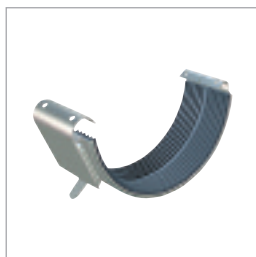
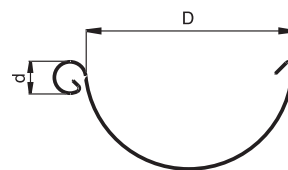
## Technical Data Half Round Gutter & Accessories



### R Half Round Gutter. Standard Length 3m

Size mm	D mm	d mm	Galv	Coated
R100-3m*	107	17	✓	✓
R125-3m	123	17	✓	✓
R150-3m	155	17	✓	✓
R190-3m	192	22	✓	✓

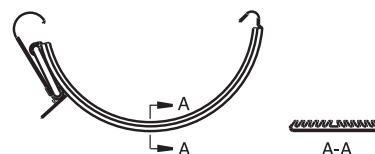
\*Not available in Copper Metallic/Pine Green



### RSK Gutter Joint with EPDM Rubber Seal

Size mm	Galv	Coated
RSK-100*	✓	✓
RSK-125	✓	✓
RSK-150	✓	✓

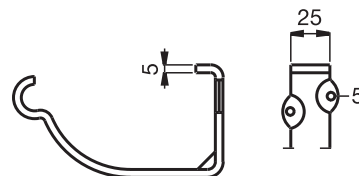
\*Not available in Copper Metallic/Pine Green



### KFK Fascia Bracket

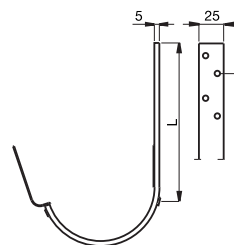
Size mm	Galv	Coated
KFK-100*	✓	✓
KFK-125	✓	✓
KFK-150	✓	✓

\*Not available in Copper Metallic/Pine Green



### K24 Fascia Bracket

Size mm	L mm	Galv	Coated
K24-190	240	✓	✓

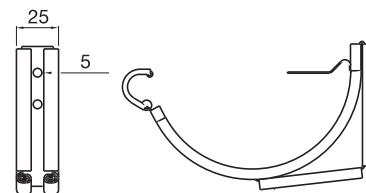


### SSK Adjustable Snap-On Bracket

Size mm	Galv	Coated
SSK-100**	N/A*	✓
SSK-125**	N/A*	✓
SSK-150**	N/A*	✓

\*Order in silver metallic. † Not available in Copper Metallic

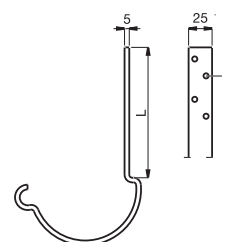
\*\*Not available in Pine Green



### KFL Rafter Bracket\*

Size mm	L mm	Galv	Coated
KFL-100†	196	✓	✓
KFL-125	196	✓	✓
KFL-150	196	✓	✓

† Not available in Copper Metallic/Pine Green

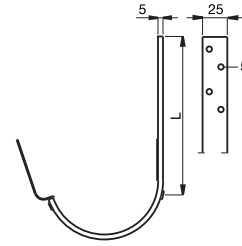


## Technical Data **Half Round Gutter & Accessories**



### **K33 Rafter Bracket**

Size mm	L mm	Galv	Coated
K33-190	337	✓	✓



### **RFKF Rise and Fall Bracket**

Size mm	Thread mm	Spike mm	Galv	Coated
RFKF-100*	250	300	✓	✓
RFKF-125	250	300	✓	✓
RFKF-150	250	300	✓	✓

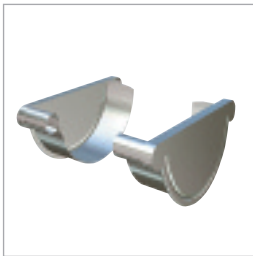
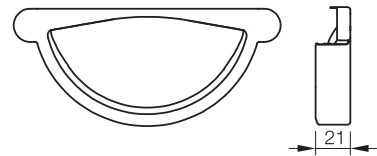
\*Not available in Copper Metallic/Pine Green



### **RG Stop End, Self-Locking (Non-Handed) with EPDM Rubber Seal**

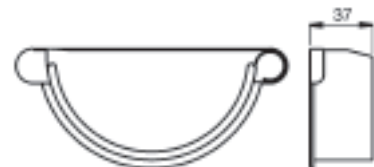
Size mm	Galv	Coated
RG-100*	✓	✓
RG-125	✓	✓
RG-150	✓	✓

\*Not available in Copper Metallic/Pine Green



### **RGV/RGH Stop End (Left/Right Handed)**

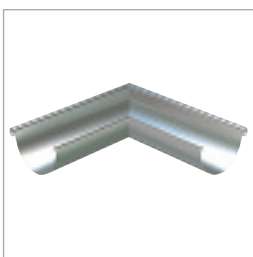
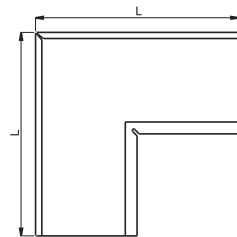
Size mm	Galv	Coated
RGV/H-190	✓	✓



### **RVI 90° Gutter Angle: Inner**

Size mm	L mm	Galv	Coated
RVI-100*	400	✓	✓
RVI-125	300	✓	✓
RVI-150	300	✓	✓
RVI-190	500	✓	✓

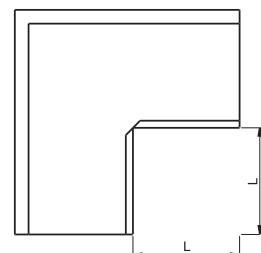
\* Not available in Copper Metallic/Pine Green



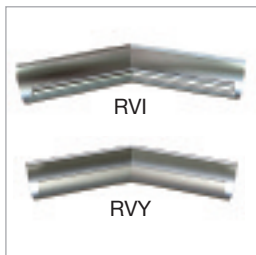
### **RVY 90° Gutter Angle: Outer**

Size mm	L mm	Galv	Coated
RVY-100*	295	✓	✓
RVY-125	160	✓	✓
RVY-150	130	✓	✓
RVY-190	285	✓	✓

\* Not available in Copper Metallic/Pine Green



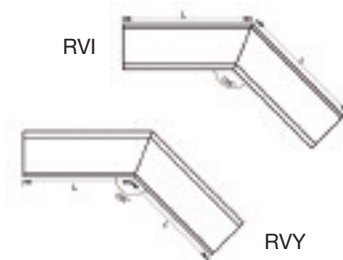
## Technical Data Half Round Gutter & Accessories



### RVI/RVY 135° Gutter Angle: internal

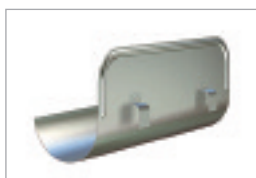
Size mm	Galv	Coated
RVI/RVY-100*	✓	✓
RVI/RVY-125	✓	✓
RVI/RVY-150	✓	✓

\*Not available in Copper Metallic/Pine Green



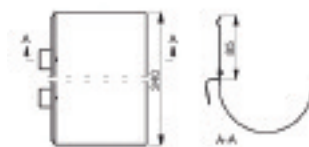
### OSK Corner Overflow Protector

Size mm	Galv	Coated
OSK	✓	✓



### OSKR Straight Overflow Protector

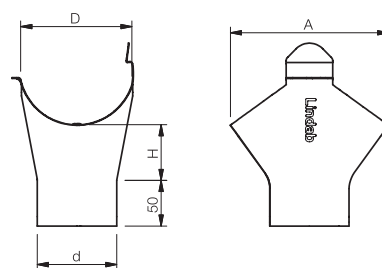
Size mm	Galv	Coated
OSKR-125	✓	✓
OSKR-150	✓	✓



### OMV Gutter Outlet

Size mm	A mm	Galv	Coated
OMV-100*	151	✓	✓
OMV-125	174	✓	✓
OMV-150	207	✓	✓
OMV-190*	180	✓	✓

\*Not available in Pine Green



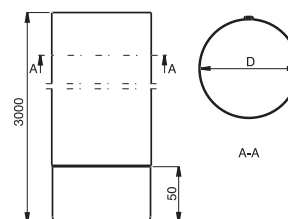
## Technical Data Down Pipe & Accessories



### SROR Down Pipe: Standard Length 3m

Size mm	Galv	Coated
SROR-75*	✓	✓
SROR-87	✓	✓
SROR-100	✓	✓
SROR-120	✓	✓

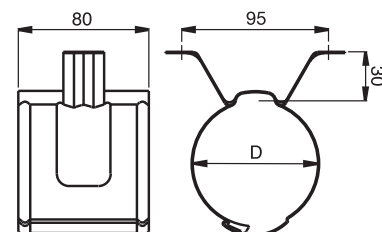
\*Not available in Pine Green



### SSVH Down Pipe Bracket

Size mm	Galv	Coated
SSVH-75*	✓	✓
SSVH-87	✓	✓
SSVH-100	✓	✓
SSVH-120	✓	✓

\*Not available in Pine Green



Technical Data **Down Pipe & Accessories**



**SSV Pipe Holder for Spike**

Size mm	Galv	Coated
SSV-75*	✓	✓
SSV-87	✓	✓
SSV-100	✓	✓
SSV-120	✓	✓

\*Not available in Pine Green



**SST Spike (Only available in Galv)**

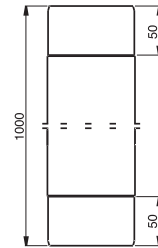
Size mm	Galv	Coated
SST-125	✓	N/A
SST-175	✓	N/A
SST-250	✓	N/A
SST-300	✓	N/A



**MST Intermediate Pipe x 1m**

Size mm	Galv	Coated
MST-75*	✓	✓
MST-87	✓	✓
MST-100	✓	✓
MST-120	✓	✓

\* Not available in Pine Green

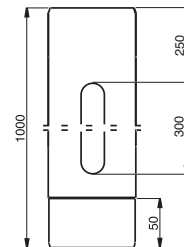


**MSTR Rod Access Pipe x 1m**

Size mm	Galv	Coated
MSTR-75*	✓	✓
MSTR-87	✓	✓
MSTR-100	✓	✓
MSTR-120	✓	✓

\* Not available in Pine Green

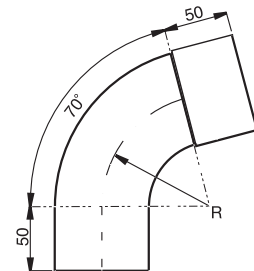
Inspection door available in plain Galv as standard. Can be colour matched at extra cost.



**BM 70° Pipe Bend (2 bends per offset required)**

Size mm	R mm	Galv	Coated
BM70-75*	90	✓	✓
BM70-87	100	✓	✓
BM70-100	125	✓	✓
BM70-120	125	✓	✓

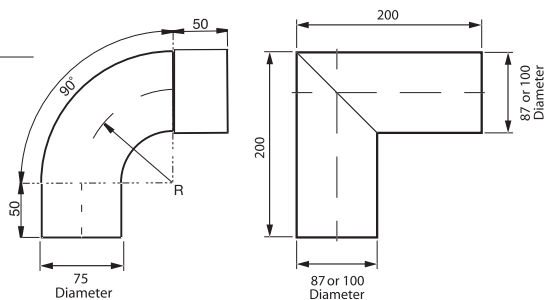
\* Not available in Pine Green



**BM 90° Pipe Bend (2 bends per offset required)**

Size mm	R mm	Galv	Coated
BM90-75*	90	✓	✓
BM90-87	N/A	✓	✓
BM90-100	N/A	✓	✓

\* Not available in Pine Green



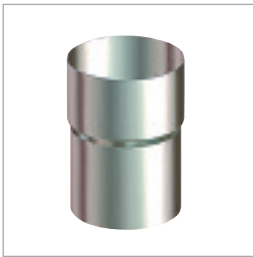
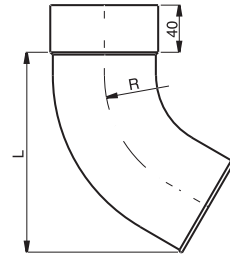
Technical Data **Down Pipe & Accessories**



**UTK Pipe Shoe**

Size mm	R mm	L mm	Galv	Coated
UTK-75*	105	165	✓	✓
UTK-87	105	170	✓	✓
UTK-100	105	175	✓	✓
UTK-120	125	205	✓	✓

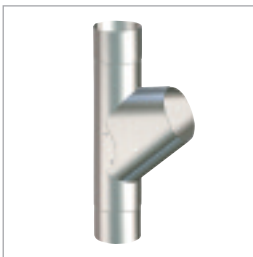
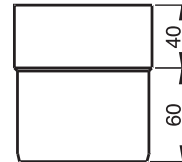
\*Not available in Pine Green



**SRORM Pipe Connector**

Size mm	Galv	Coated
SRORM-75†	✓	✓
SRORM-87	✓	✓
SRORM-100	*	✓

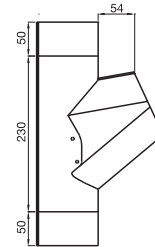
\*Order in silver metallic. † Not available in Pine Green



**GROR Branch**

Size mm	Galv	Coated
GROR-75*	✓	✓
GROR-87	✓	✓
GROR-100	✓	✓

\*Not available in Pine Green

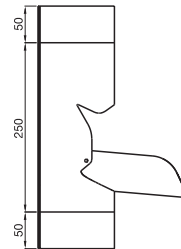


**FUTK Adjustable Shoe (manual)**

Size mm	Galv	Coated
FUTK-75*	✓	✓
FUTK-87	✓	✓
FUTK-100	✓	✓

\*Not available in Pine Green

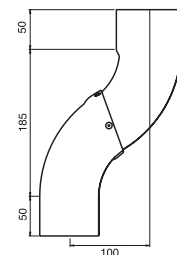
Conventional rainwater filter and diverter available in plastic, see top of page 11.



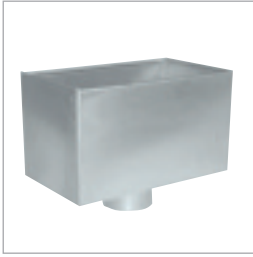
**SOKN One Piece Bend**

Size mm	Galv	Coated
SOKN-75*	✓	✓
SOKN-87	✓	✓
SOKN-100	✓	✓

\*Not available in Pine Green



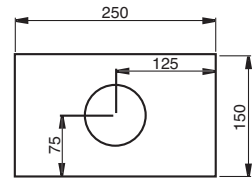
Technical Data **Down Pipe & Accessories**



**VATK-R Small Rectangular Water Hopper**

Size mm	Galv	Coated
VATKR-75*	✓	✓
VATKR-87†	✓	✓
VATKR-100†	✓	✓
VATKR-120†	✓	✓

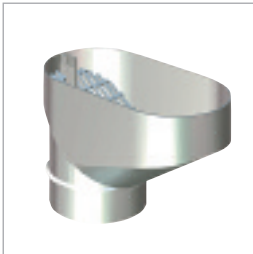
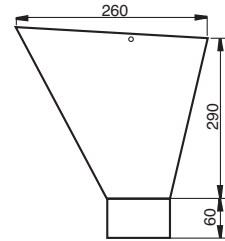
Only available in selected colours. † Not available in Copper or Anthracite Metallic. \*Not available in Pine Green



**VATK-L Large Square Water Hopper**

Size mm	Galv	Coated
VATKL-75*	✓	✓
VATKL-87	✓	✓
VATKL-100	✓	✓
VATKL-120	✓	✓

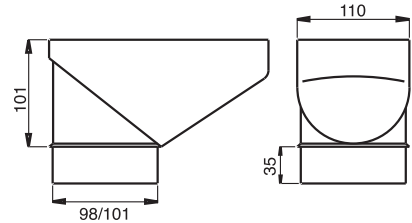
\*Not available in Pine Green



**RT Drain Trap for Down Pipes (HD polythene)**

Leaf strainer.

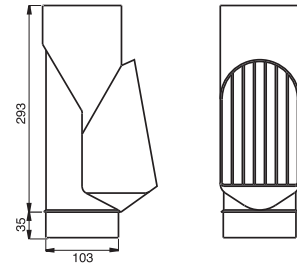
The lower diameter fits standard ground drainage pipes. Available in 10 colours to match HBP finishes.



**SLS Self-Cleaning Leaf Trap (HD polythene)**

Self-cleaning leaf strainer.

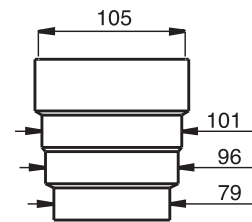
The lower diameter fits standard ground pipes. Best suited to 100mm Down Pipe. Available in 10 colours to match HBP finishes.



**MRT Drainage Connector (HD polythene)**

Drainage adapter. For connection to ground pipes with other dimensions than standard.

Available in 10 colours to match HBP finishes.



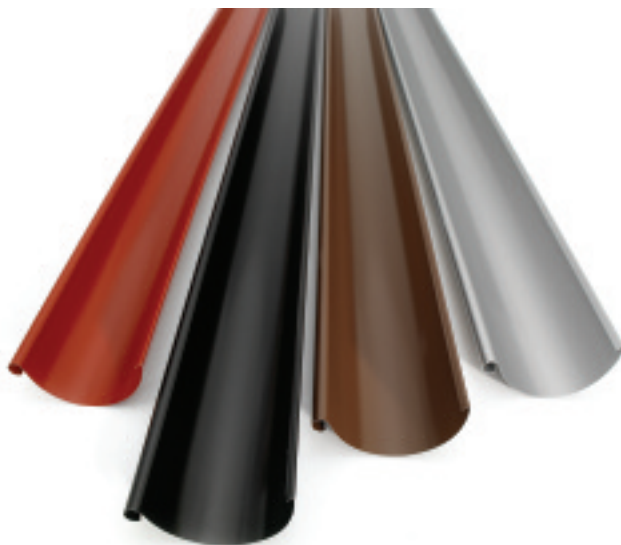
# We are always close at hand to give you advice and assistance



At Lindab our aim is to match the reliability of our products with that of our service. Customer support is a core part of our business philosophy.

We are proud of the relationships we have developed with local authorities, housing associations, exclusive developers, contractors and end users across the UK. We have only done this by adopting the right approach to both customers and end users.

We have dedicated customer support at our UK Head Office in the Midlands which can provide you with technical assistance, quotes and problem solving solutions.



**Lindab Ltd**  
**Building Products Division**  
Shenstone Trading Estate  
Bromsgrove Road  
Halesowen  
West Midlands  
B63 3XB

Tel: (0121) 585 2780  
Fax: (0121) 585 2782  
Email: [buildingproducts.sales@lindab.co.uk](mailto:buildingproducts.sales@lindab.co.uk)  
Web: [www.lindab.co.uk/rainline](http://www.lindab.co.uk/rainline)

