

LD242



Yacht Spreader LED Light

Data sheet - Page 1




Design: Hall Spars Product: LD242

This has been specifically designed for use on yacht spreaders to illuminate the deck or other spreaders below. It is fitted with the latest LED technology and machined from a solid billet of high grade aluminium. This is hard anodised making it resistant to harsh sea environments. The narrow 12 degree beam will light a deck from 9m.

Key Features

- Integral anti-wicking barrier increases protection against moisture ingress due to incorrect IP rated cable connections
- 2 countersunk screws fix the body to the mounting surface
- Hard anodised body for high resistance to sea environments
- Range of beam angles
- 12° beam will light a deck from 9m
- Available with 0-10V, DMX or Dali drivers
- Please specify with long cables to enable connections to be done in a dry location

Specification

Applications 

Beam Angles 12°, 31°, 48°, 36° x 12°

LED type 1 x Cree XPG

Colour temperature	2700K / 3000K			5000K		
Drive Current (mA)	350	500	700	350	500	700
LED power* (W)	1.2W	1.7W	2.4W	1.2W	1.7W	2.4W
CRI (typical)	93	93	93	75	75	75
Forward voltage (V) ₁₀₀	3.0V	3.2V	3.4V	3.0V	3.2V	3.4V
Delivered lumens (L ₁₀₀)	74	98	123	115	152	191
Lumens per circuit watt**	62	58	51	96	89	79

LED lifetime (to 70% lumen maintenance) 50,000hrs at a max ambient temperature of 35°C (if specifying fitting in ambient temperatures of up to 45°C run at 500mA max, LD242-500)

Materials Hard anodised aluminium

Glass 5mm thick borosilicate

Wiring Comes pre-wired with 2 core 100mm lead, can be specified with up to 10m at extra cost

IP rating IP68 for up to 1 week (for permanent submersion applications use our LD242A, LD41, LD60)

*LED wattage includes losses associated with using an 85% efficient driver
**data shown allows for an ambient temperature of 35°C



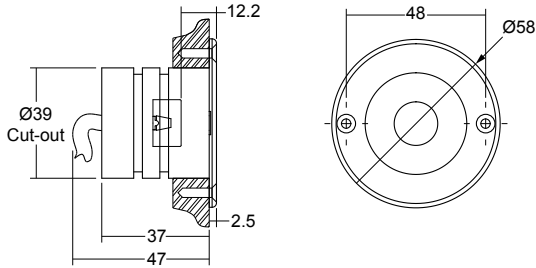
LD242



Yacht Spreader LED Light

Data sheet - Page 2

Dimensions



(Dimensions in mm)

Photometrics

Photometric files are included in the design pack which can be downloaded from the LD242A product page on the website.

Order Codes and Options

Product code	LED colour	Lens angle	Finish
LD242 - 350 - 500 - 700			

Example: LD242-700 / LW30 / MB / Hard anodised

Product codes with output options

1.2W LED at 350mA	LD242-350
1.7W LED at 500mA	LD242-500
2.4W LED at 700mA	LD242-700

LED colour options

LED colour options	Suffix
Extra Warm White (2700K)	/LW27
Warm white (3000K)	/LW30
Cool White (5000K)	/LW50
Blue	/LB
Green	/LG
Red	/LR
Amber	/LA

Beam / lens angle options

12° narrow spot	/NB
31° medium	/MB
48° wide	/WB
36° x 12° oval	/OB

Bezel finish

Hard anodised aluminium (gun metal grey)
 Paint finish black / white (RAL 9016) / RAL

Use with 350mA, 500mA or 700mA constant current LED drivers

We have a wide range of dimmable LED drivers, 0-10V, DMX, DALI and Mains dimmable. Please see the downloads section on our website:

- To run 1-14 LD242-350 in series use a TXDEL350D (0-10V dimmable)
- To run 1-14 LD242-500 in series use a TXDEL500D (0-10V dimmable)
- To run 1-13 LD242-700 in series use a TXDEL700D (0-10V dimmable)