

LD150

High Power Interior LED Uplighter

Data sheet - Page 1



Design: L+DC Thomas Cravanis Lighting | Project: Private Residence | Product: LD150

A very powerful uplighter for its size and depth. The LD150 has been designed specifically to produce low glare illumination to walls and columns. It can be used for a wide range of project styles with a minimal aesthetic and no visible fixings. This is a very tough, high quality fitting, machined from high grade materials ensuring excellent thermal and light output performance.

Key Features

- LED and lens assembly recessed within a black anodised body for reduced glare
- Glare shield developed to minimise the view of the intense light source without affecting the wash of light on the wall/column
- Single optic produces a very consistent beam with no multiple shadows
- Tight 10° spot is available for lighting columns and arches or a 15°x 30° spreader lens which is ideal for wall washing
- No visible fixings. Fixing is by mounting directly into a cut out with the soft silicon seal, using the fixing sleeve, or the concrete housing with optional integral driver
- RGBW LED option uses a larger optic, for a premixed light beam immediately adjacent to the fitting
- Range of bezel finish options
- Available with Switch, 0-10V, DMX, Dali or Mains dimmable drivers



Specification

Applications



Beam Angles

10°, 15°x 30°

LED type

1 x Cree MKR 4 die LED with 2 Step Easy White binning

Colour temperature

2700K / 3000K | 5000K

	2700K / 3000K		5000K	
Current	350mA	500mA	350mA	500mA
LED power (Max)	5W (4.4W)*	7W (6.3W)*	5W (4.4W)*	7W (6.3W)*
CRI (Min)	85	85	80	80
Forward voltage (V) ₁₀₀	14V	14V	14V	14V
Delivered lumens (L ₁₀₀)**	307	416	328	445
Lumens per circuit watt***	70	66	75	71

LED lifetime (to 70% lumen maintenance) 50,000hrs at a max ambient temperature of 35°C (if higher ambient then run at 350mA up to 45°C)

Glass

6mm thick borosilicate

Materials

Black anodised aluminium body, Machine finish 316 stainless steel bezel (other options available)

Wiring

Comes pre-wired with 2 core 250mm lead. Can be specified with up to 10m at extra cost.

IP rating

IP54

*indicates the nominal power for the LED run at that particular current and includes losses associated with using an 85% efficient driver

**lumen output indicated is without the glare shield. Allow 30% less with glare shield

***data shown allows for an ambient temperature of 35°C

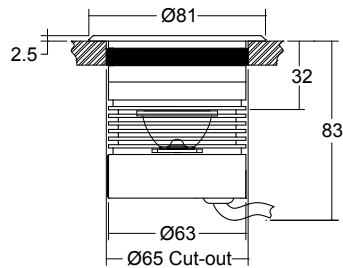
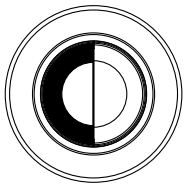
LD150

High Power Interior LED Uplighter

Data sheet - Page 2

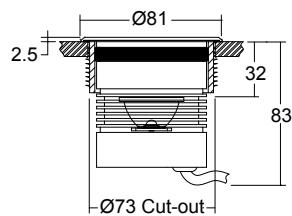
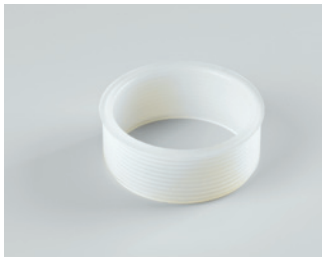


Dimensions and Fixing Options



Soft silicon seal holds the fitting into the cut-out

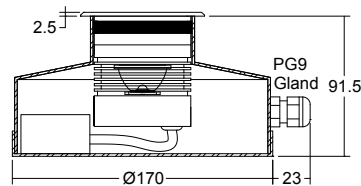
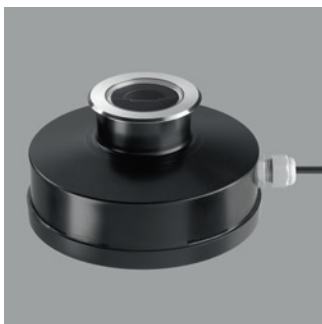
/482S First fix sleeve



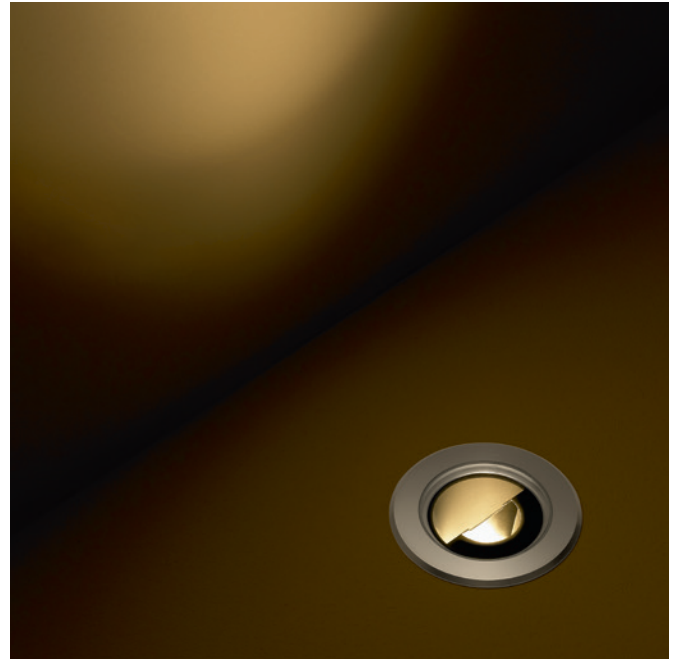
First fix sleeve is polypropylene. Fins on the side lock it into a range of mounting surfaces.

/482N Concrete housing

/ID Optional integral non dimming driver (single colour only)



Concrete housing can be specified with an integral mains in non dimming LED driver.



Design: Lighting Design international Project: Cap Ferrat Product: LD150/LWW/10

LD150



High Power Interior LED Uplighter

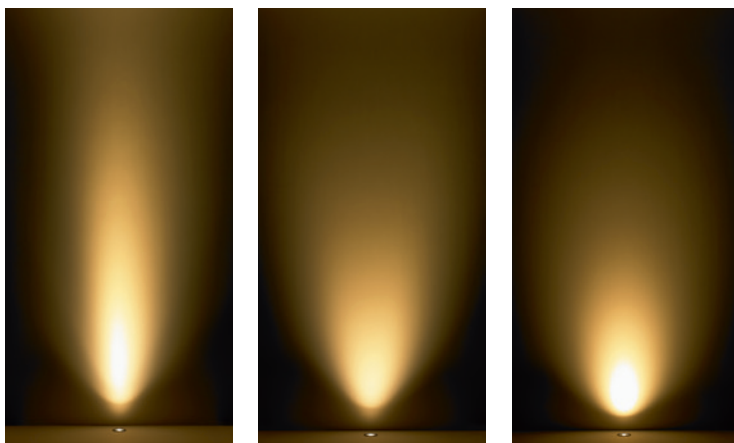
Data sheet - Page 3

Lens Options

/NB - 10° spot

/OB - 15°x 30° spreader

RGBW - 26deg colour mix



The centre of the LD150 is positioned 125mm from the wall (2.5m high) in these photos.

Photometrics

Photometric files are included in the design pack which can be downloaded from the LD150 product page on the website.

Order Codes and Options

Product code	LED colour	Lens angle	Bezel finish	Accessory
LD150 - 350 - 500	<input type="text"/>	<input type="text"/>	<input type="text"/>	<input type="text"/>

Example: LD150-500 / LW30 / NB / Stainless Steel / 482N / ID

Product codes with output options

5W 350mA	LD150-350
7W 500mA	LD150-500

LED colour options

	Suffix
Extra Warm White (2700K)	/LW27
Warm White (3000K)	/LW30
Cool White (5000K)	/LW50
RGBW (White is 4000K)	/RGBW

Beam / lens angle options

10° narrow spot	/NB
15° x 30° oval spreader beam	/OB
RGBW LED comes with a 26° lens	

Bezel finish options

Stainless steel 316
 Paint finish white / black / RAL (interior use only)
 Polished and passivated stainless steel (for marine environments)
 Flamed solid bronze (antique finish)

Fixing accessories

First fix sleeve	/482S
Concrete housing	/482N
with integral driver	/ID
Ground tube	/484GT

Use with 350mA and 500mA constant current LED drivers

For our complete range of LED drivers please download the data sheet from the downloads section at www.lightgraphix.co.uk