

LD1250



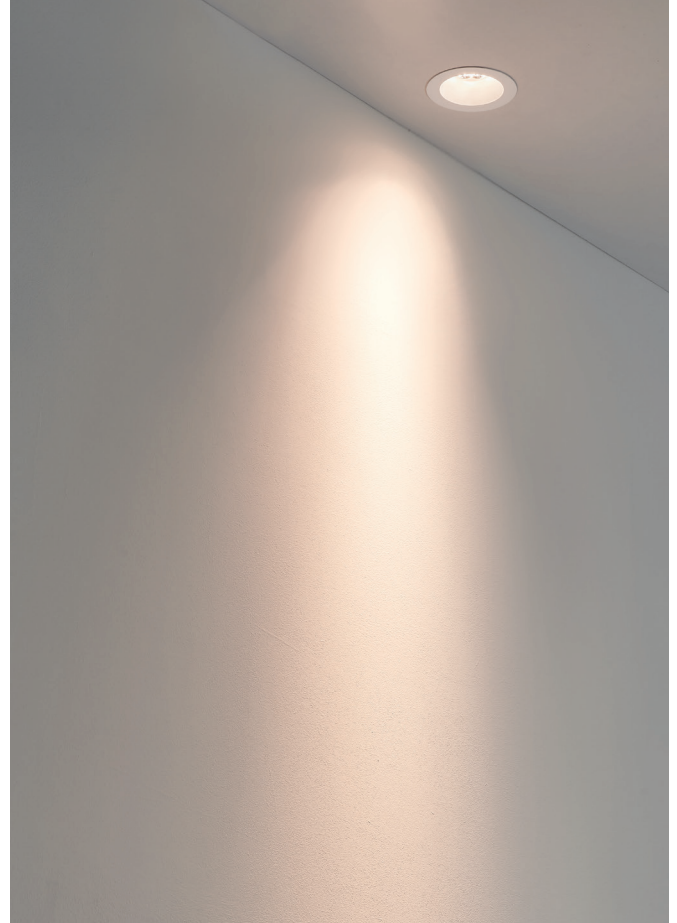
Fixed Low Glare LED Downlight

Data sheet - Page 1

LD1250 is a very powerful, low glare LED downlight. With its minimal bezel thickness and small diameter it is ideal for discreet wall washing, general downlighting and display lighting. A choice of beam angles are available with slightly frosted optics creating an even, focused beam of light, without compromising efficiency. At 350mA and 500mA a shorter heat sink is required making it useful for applications where ceiling void space is at a minimum, for example display lighting. At 700mA a larger heat sink is required.

Key Features

- LED and lens assembly recessed for reduced glare
- High output 6 LED cluster using 93 CRI LEDs
- Interchangeable optics
- A range of soft contoured beams
- Variable heat sink size depending on application and selected output
- High quality machined components
- Spring clip fixing
- Available with Switch, 0-10V, DMX, Dali or Mains dimmable drivers



Specification

Applications



Beam Angles 15°, 25°, 40°

LED type 6 x Cree XPG

Colour temperature 2700K / 3000K

5000K

Current	350mA	500mA	700mA	350mA	500mA	700mA
LED power (Max)	7W (6.6W)*	10W (9.6W)*	14W (13.5W)*	7W (6.6W)*	10W (9.6W)*	14W (13.5W)*
CRI	93	93	93	75	75	75
Forward voltage (V) ₁₀₀	20V	20.7V	22V	20V	20.7V	22V
Delivered lumens (L ₁₀₀)	435	565	673	674	876	1043
Lumens per watt**	67	59	49	104	91	76

LED lifetime (to 70% lumen maintenance) 50,000hrs at an average ambient temperature of 35°C

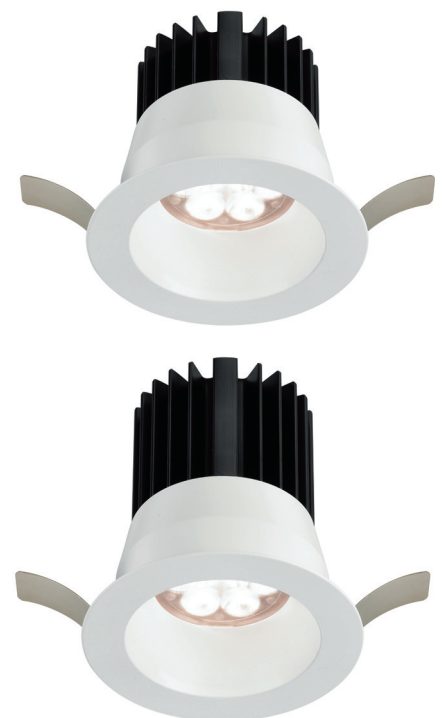
Materials Anodised aluminium, Stainless steel spring clips

Wiring Terminal block on rear of fitting

IP rating IP40

*LED wattage includes losses associated with using an 85% efficient driver

**data shown allows for an 85% efficient driver at an ambient temperature of 35°C



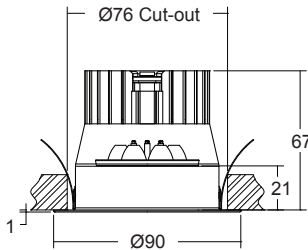
LD1250



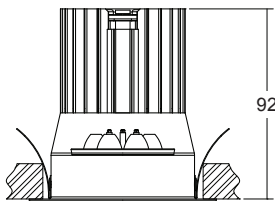
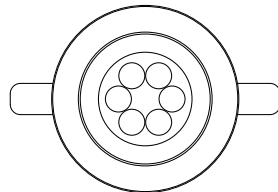
Fixed Low Glare LED Downlight

Data sheet - Page 2

Dimensions



LD1250-350
LD1250-500

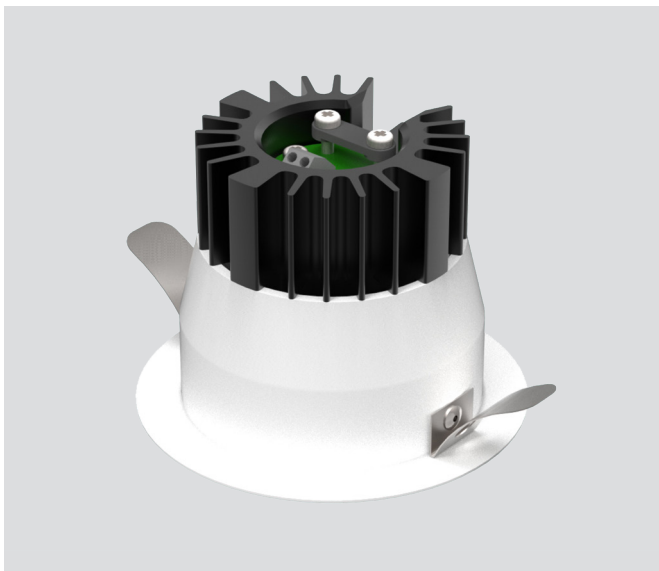


LD1250-700

Please note depth increase when using the 700mA version

Design

Built in terminal block and cable restraint



Photometrics

Photometric files are included in the design pack which can be downloaded from the LD1250 product page on the website.

Order Codes and Options

Product code	LED colour	Beam angle	Finish
LD1250 - 350 - 500 - 700	<input type="text"/>	<input type="text"/>	<input type="text"/>

Example: LD1270-350 / LW30 / MB / White

Product codes with output options

7W 350mA	LD1250-350
10W 500mA	LD1250-500
14W 700mA	LD1250-700

LED colour options

	Suffix
Extra Warm White (2700K)	/LW27
Warm White (3000K)	/LW30
Cool White (5000K)	/LW50

Beam / lens angle options

	Suffix
15° narrow spot	/NB
25° medium	/MB
40° wide	/WB

Bezel finish options

Paint finish silver / black / white (RAL 9016) / RAL

Use with 350mA, 500mA, or 700mA constant current LED drivers

For our complete range of LED drivers please download the data sheet from the downloads section at www.lightgraphix.co.uk
 Or please contact us for more information