



10yr Warranty



Interchangeable LED



Interchangeable Optics



No Maintenance



LED Protection



Cool to Touch 63°C



Anti-Wicking Barrier



Eco-Friendly



Energy Efficient



Thermal Protect



Made in England



10° Beam angle



18° Beam angle



32° Beam angle



42° Beam angle



47x8° Beam angle



2700K Warm white



4000K Cool white

The LV-415R Round Recessed Soffit light is a compact fixture which is packed full of innovative key features to assist the designer and end user. This fixture is machined from high quality materials and is available in a wide range of finishes to suit most applications. The LV-415R has been designed primarily as a Soffit light but can be used for mounting in decking, and is held in place by the use of 3x CSK screws. One of the main advantages of the LV-415R Soffit light is its compact size, and this allows it to be used in very shallow Soffit boards. Its also well suited for interior lighting schemes.



Light Visuals products are made to order.
(Please allow 2-4 weeks for delivery).

Available in 316L stainless steel, solid brass or UV stable polyester powder coated stainless steel finishes.

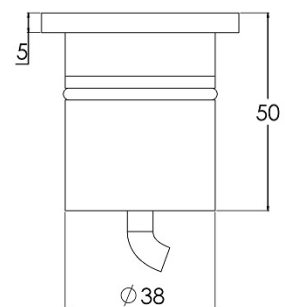
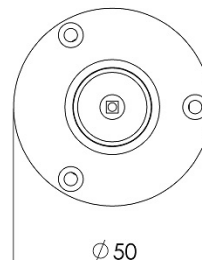
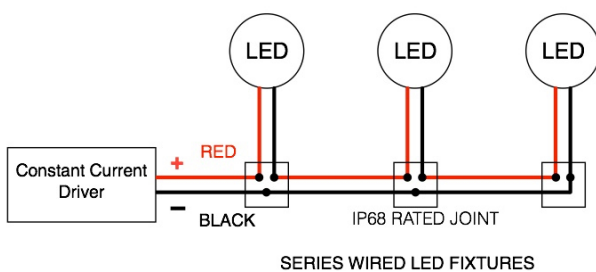
350mA 1.2w	500mA 1.7w	700mA 2.4w	3.2v		LED	IP68	BIN 8B4				PART L
---------------	---------------	---------------	------	---	-----	------	------------	---	--	---	-----------

Key Features

- **Replaceable LED Module.** Permits easy change of colour temperature or replacement of the LED at the end of it's long life.
- **Interchangeable Colour Coded Reflectors (Optics).** For complete design control of beam angles.
- **LED Open Circuit Protection.** Easy identification of a failed LED due to incorrect installation or LED end of life.
- **Internal Anti-Wicking Barrier.** Eliminates moisture ingress due to incorrect cable joints.
- **Choice of 3 Drive Currents.** 350mA, 500mA, 700mA. For complete design control of light output.
- **Choice of 2 Colour Temperatures.** 2700°K Warm White, 4000°K Cool White.
- **Single Bin LED's.** Ensures complete colour consistency with no variation in colour temperature between products.
- **10 Year Warranty** body. **5 Year Warranty** LED board.

Specification

- Designed, manufactured, and hand assembled in England
- **Wiring:** (SERIES)
- Requires a remote (constant current) LED driver 700mA maximum
- **Choice of Light Outputs:** 350mA = 1.2w, 500mA = 1.7w, 700mA = 2.4w
- **Forward Voltage:** 3.2v DC
- **Colour Temperature:** 2700°K (warm white) or 4000°K (Cool white)
- **Light Source:** Cree XP-E (Light Visuals proprietary replaceable LED module)
- **Binning:** 2 Step MacAdams Ellipse binning quality 2700°K only
- **Colour Rendering Index:** CRI 85
- **Lumens:** 80lm@350mA 150lm@700mA (Typical)
- **Dimmable:** 0-10V
- **Beam Choice:** 10°, 18°, 32°, 42°, 47x8°
- **Ingress Protection:** IP68 (submersible)
- **Cable:** 1m 2 core HO5RN-F rubber cable. (can be supplied up to 10m at additional cost)
- **Warranty:** 10 year warranty on brass, stainless steel, powder coated stainless steel)
- **Warranty:** 5 year warranty LED board



July 2018

www.lightvisuals.co.uk

sales@lightvisuals.co.uk

Tel: 020 8265 3735