

# LEVOLUX

## MATRIX XL BRISE SOLEIL SYSTEM



The Levolux Matrix XL Brise Soleil System provides an effective method of solar shading with the option of an integral walkway.

- ◆ Impressive aesthetics
- ◆ Flexible arrangement
- ◆ Energy efficient
- ◆ Integrated access solution



# LEVOLUX

## MATRIX XL BRISE SOLEIL SYSTEM

### Introduction

The Levolux Matrix XL System is of British design and manufacture, uniting simplicity and efficiency to produce an effective external “Brise Soleil” Solar Shading System, with the option of an integral Walk-On Platform.

The system can create both aesthetic and structural features. It enhances the external appearance of new and existing buildings, whilst controlling solar heat gain to create a comfortable internal environment.



Levolux installed its striking Matrix XL system, with 'Z' section louvres above each row of windows at Haringey 6th Form College.

### Features & Benefits

**Aesthetically pleasing** – Matrix XL is manufactured from extruded aluminium components and can be anodised or polyester powder coated to complement the building and surroundings.

**Virtually maintenance free** – Stainless steel fastenings and fixings are used, producing a virtually maintenance free and corrosion-resistant system.

**Reduces energy costs** – The ability to control solar heat gain can reduce or even eliminate the need for air conditioning.

**Comfortable environment** – Matrix XL encourages natural ventilation and provides unobstructed outward vision.

**Flexibility** – Matrix XL can be fitted to existing or new buildings and allows special applications to be considered.

**Accessibility** – Using Matrix XL with a Walk-On Platform option gives easier access for maintenance and window cleaning.

**Multi-purpose** – Matrix XL may even be used for wall cladding, ventilation grilles, sight screening, pergolas, pedestrian ways, sun terraces etc.

### The Range

**Standard** – 'Z' louvres are usually fitted below the support arms in a continuous design (max length of 6 metres). Other support arm options are available to accept longer louvres.

With support arms at up to 2.25 metre centres, most window glazing mullions can be followed.

**Structural** – For spans of greater than 2.25 metres, the structural XL blade system can be used, accommodating spans of up to 3 metres.

**Walk-on Matrix XL** – Offering a unique maintenance platform as well as an effective sunscreen.

This solution is particularly suited to taller buildings where “shading shelves” may be created. The system incorporates a J-tread element with a non-slip top section, forming a platform adjacent to the louvres without affecting their efficiency.

The platform can be supplied mill finished, anodized or polyester powder coated and can incorporate a latch-way safety system or a handrail to complement the overall design.



The Captain's Club Hotel in Poole benefits from the flexible and aesthetically pleasing Levolux Matrix XL Solar Shading System.



# LEVOLUX

## MATRIX XL BRISE SOLEIL SYSTEM

**Bespoke Solutions** – Our auto-cad trained product designers and structural engineers are able to develop special solutions. We really can make your ‘dream designs’ become reality.

By combining the benefits of extruded aluminium components and the structural integrity of steel, we can achieve 7.2m fixing centres.

In addition, by incorporating structural brackets for fixing Matrix XL in multiple tiers to concrete or structural steel, a clean curtain walling façade can be retained, with the added benefit of a Walk-On Platform.

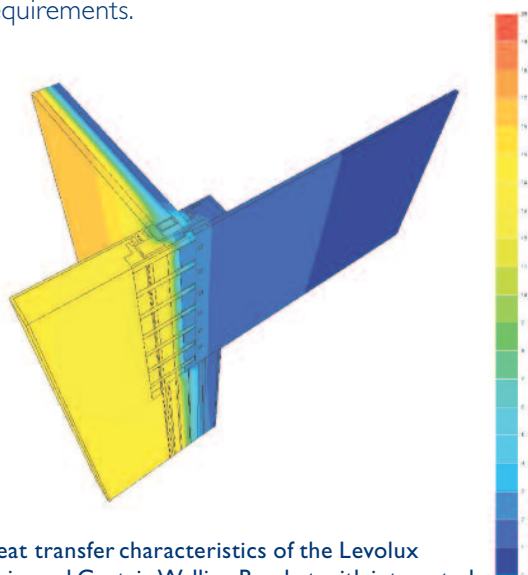
### System Construction

All components are subject to rigid quality standards and are designed to produce a high performance product with an aesthetically pleasing finish. The main components of a Levolux Matrix XL system are:

- ◆ Ist fix brackets
- ◆ Support arms
- ◆ Louvres
- ◆ ‘J’ treads
- ◆ Braces

**Ist fix brackets** – a wide range of stainless, galvanised steel or aluminium fixing brackets is available, including a thermally broken curtain walling bracket (see below).

Other components are generally extruded aluminium sections but can also vary to suit individual building requirements.



Heat transfer characteristics of the Levolux Universal Curtain Walling Bracket with integrated thermal break – 70% more effective than a standard bracket.

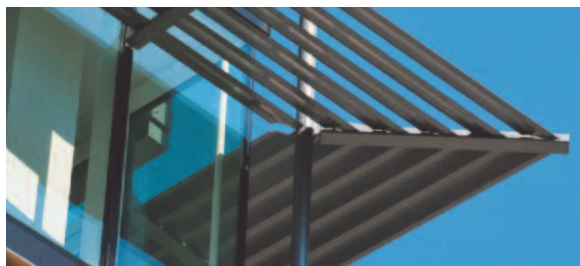


The new South Stand of the RFU Twickenham Stadium in Middlesex is fitted with the Matrix XL Solar Shading System with an integral Walk-On Platform.

### Three Year Warranty

All Levolux systems are made with a high-grade material to exacting specifications. This enables us to guarantee free of charge replacement parts should any system prove to be defective within three years of installation.

This guarantee is conditional on the manufacturers recommended fitting and operating instructions having been followed.



Levolux installed its Matrix XL System with ‘Z’ shaped louvres for Scottish Widows at The Exchange Place development in Edinburgh. ‘S’ shaped or curved louvre blades can also be accommodated.

### Design Parameters

Sizes indicated are the maximum for standard applications.

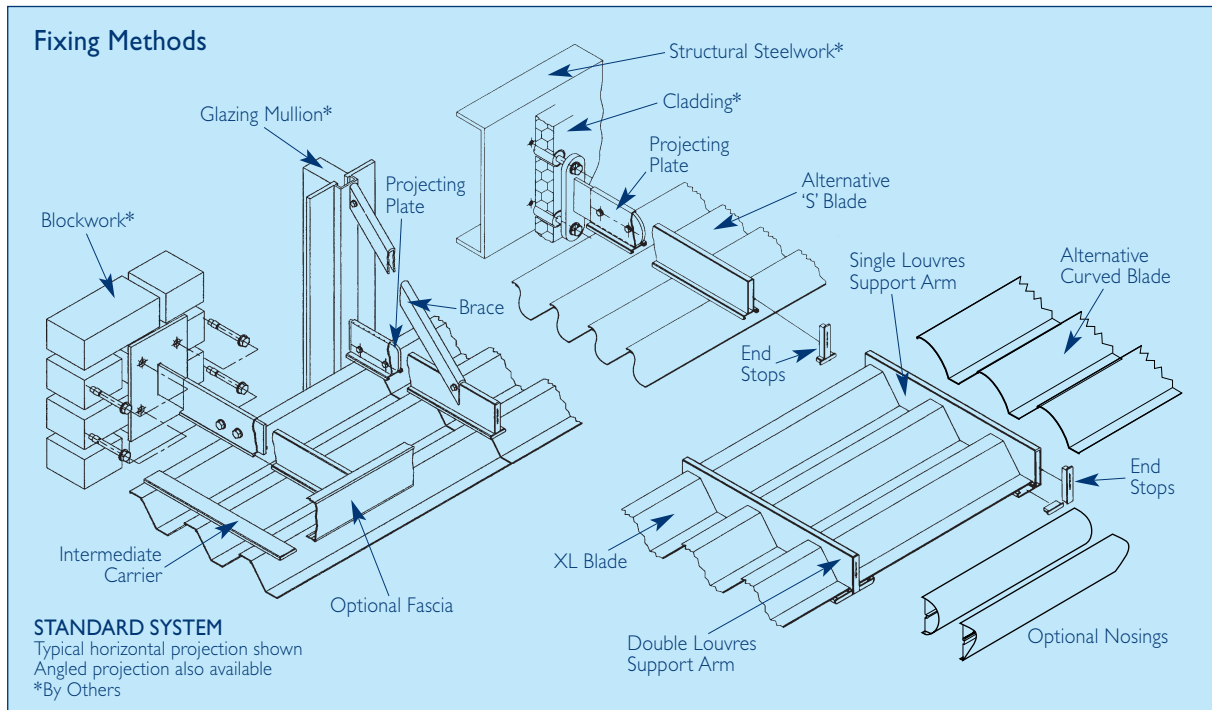
Advice should be sought from your Levolux distributor before proceeding with any project even when using standard products as local conditions could affect the final system design.

Sizes can sometimes be exceeded with the incorporation of special details to cope with specific building requirements.



# LEVOLUX

## MATRIX XL BRISE SOLEIL SYSTEM



### Specification

#### Item: Levolux Matrix XL System:

Fixed External Solar Shading System manufactured from extruded aluminium components grade AA 6063 TF using stainless steel fastenings. Completed with a natural anodised/powder coated\* finish from the Levolux range.

Colour ref. RAL/BS.....+

Louvres to be supplied in 'Z' form with 90mm diagonal face attached via extruded aluminium clips to standard support arms.

Standard/bespoke/cladding bracket supports.

Support arms finished with end cap of standard colour:

Width = ..... Projection = .....

System to be cantilever/angled/in-frame braced/unbraced\* design.

#### Item: Levolux Walk-On Platform:

Fixed Walk-On Platform to be manufactured from extruded aluminium components to BS1474. Completed with a mill, natural anodised/powder coated\* finish.

Factory assembled panels with 1.910.0100 'J' treads spaced at 65mm pitch over projection, to suit 62 degree sun cut off angle.

Panels fabricated with Kick Plate supports and spacers with stud at maximum 1500mm centres.

**NB** – this maintenance system is designed to support a 1kN point load at 3000mm centres with support arms spaced at 3000mm (equivalent to use by only one operative for maintenance purposes only). Levolux recommend that the system be used in conjunction with a fall arrest system such as a latchway safety cable.

Supplied and installed by an approved Levolux distributor.

+ Insert as applicable \*Delete as applicable

In line with the policy of continuous product development, Levolux reserves the right to alter specifications without prior notice.

For further information on Levolux Solar Shading Systems and effective ways to control light, heat and glare please contact:

**Levolux Limited**  
 Forward Drive, Harrow  
 Middlesex HA3 8NT  
 United Kingdom  
 T: (+44) 020 8863 9111  
 F: (+44) 020 8863 8760  
 E: info@levolux.com

**Levolux A.T. Limited**  
 24 Eastville Close, Eastern Avenue  
 Gloucester GL4 3SJ  
 United Kingdom  
 T: (+44) 01452 500007  
 F: (+44) 01452 527496  
 E: info@levolux.com