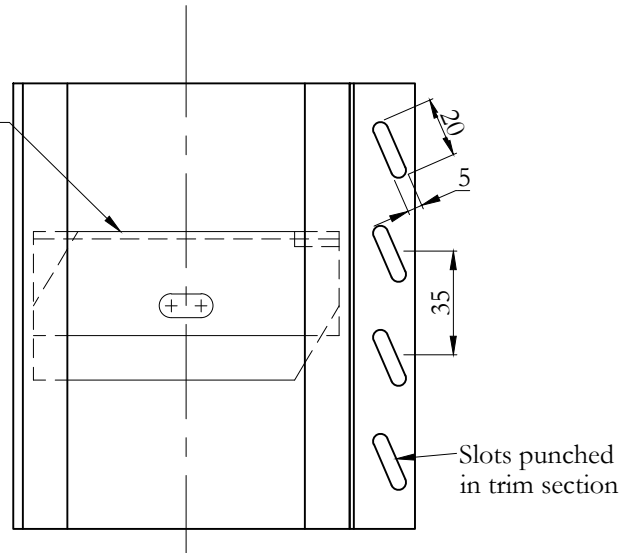
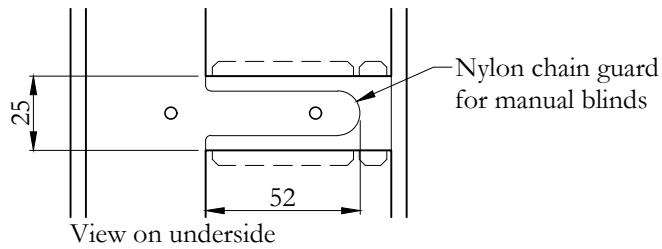


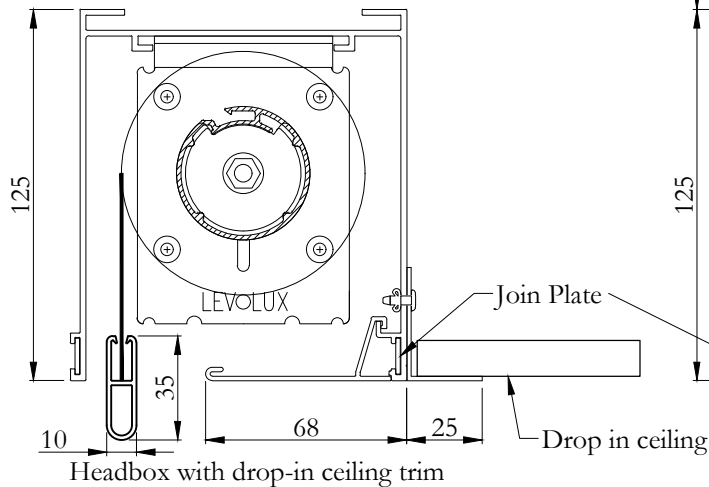
Headbox bracket
Join Plates



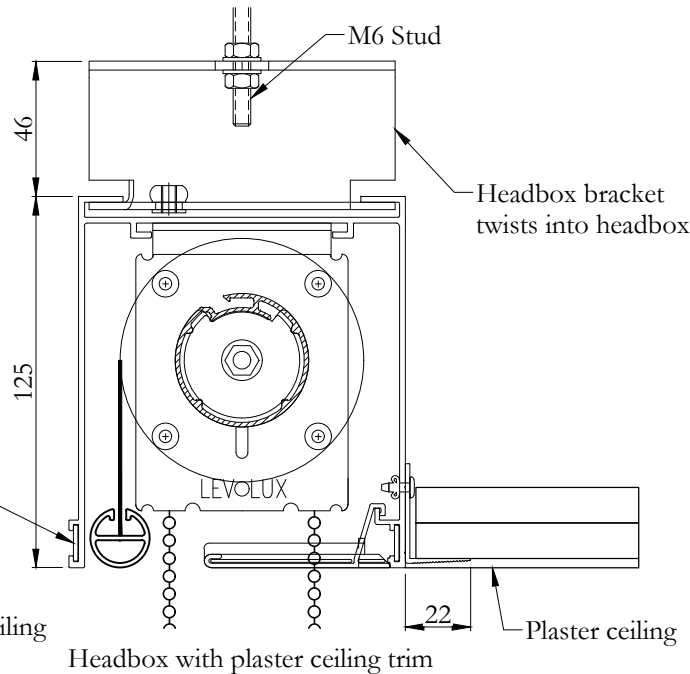
Plan on Headbox for plaster ceiling



View on underside



Headbox with drop-in ceiling trim



Headbox with plaster ceiling trim

CI/SB | 76.7

LEVOLUX

Drawing No.

G.A. 760/110/125/01

Specification

Manufacture and Reference: Levolux extruded headboxes and extruded hook on closure trims supplied and installed by Levolux Limited Tel 020 8863 9111 or Levolux A.T. Limited Tel 01452 500007

Description: Extruded aluminium headbox section with integral hook for closure trim and options for plasterboard or drop-in paneled ceilings.

Material: System manufactured from extruded aluminium alloy 6063 T6.

Finish: Polyester powder coated to RAL...., average 60 microns / anodised AA25 / mill finish / PVDF.

Dimensions: As shown on drawings.

Fixing: Headbox to be fixed at maximum 1500mm centres, and within 300mm of roller blind brackets. Headboxes to be aligned with join plates at every join.

Notes:
Roller blinds can be manually operated by chain using nylon guard or electrically operated.

LEVOLUX
DESIGNED TO CONTROL

LEVOLUX LTD.

Forward Drive, Harrow,
Middlesex, HA3 8NT. UK
Tel (+44) 020 8863 9111
email:info@levolux.com

24 Eastville Close,
Gloucester, GL4 3SJ. UK
Tel (+44) 01452 500007
web:www.levolux.com