

Introduction

Levolux Internal Venetian Blinds are designed for a wide range of applications and are ideally suited for use in offices, hotels, hospitals and schools. A reliable and cost effective means of controlling light and glare, Levolux venetian blinds can also be used to provide privacy, visual security and added decoration.

Features & Benefits

Aesthetically pleasing - slats are available in a wide choice of colours and finishes, including perforated, high mirror, marble or iridescent aluminium finishes. Matching headrails, bottomrails ladders and tapes provide a quality, functional and highly decorative product to enable the specifier to improve interiors environmentally and aesthetically.

Ultimate control - a wide choice of control options is available from manual cord through to fully motorised remote control. Using a standard 'O' ring on lift tape reduces unsightly bundles of cords. The standard ratchet gearbox on tilt mechanisms removes the possibility of over tilting and causing damage.

Adaptable - to suit doors, sloping and pivoting windows, blinds can be fitted with secure side guidings. Alternatively, hold-down brackets allow the bottomrail to be clipped-in to keep the blind stable when windows or doors are opened.

Technically reliable - latest designs allow smooth operation and optimal closure.

Room partitioning - installed between double glazing venetian blinds can act as a room divider.

All aluminium construction - this option increases the system's life expectancy and suitability for humid areas.

The Range

Levolux 416 (16mm slats) and Levolux 425(25mm slats) Venetian Blinds provide a slender and unobtrusive system which can also be used between double glazing or within a modular window frame.

Levolux 435 (35mm slats) and Levolux 450 (50mm slats) Venetian Blinds allow for large glazing areas to be covered neatly and economically.

Levolux can design bespoke systems in other slat widths.

Levolux timber venetian blinds are also available.

System Construction

All components are subject to rigid quality standards and are designed to produce a high performance product with an aesthetically pleasing finish. The main components of the Levolux Internal Venetian Blind are:

- **Headrail • Bottomrail • Slats • Control**
- The headrail is manufactured from stove enamelled steel, although to suit humid conditions an aluminium option is available in a limited colour range. All the operating mechanisms are neatly contained in this U-shaped headrail.
- The slim bottomrail, like the headrail, is made of heat treated, stove enamelled steel and is also available in aluminium for use in areas with a high corrosion risk.
- Aluminium slats are heat treated and double stove enamelled to provide resistance to surface abrasion from the slats rubbing against each other and protection to peeling, corrosion, chalking and fading. Slats are available in a wide range of colours including a budget range of solid 25mm aluminium slats. Ladder and lift tapes are available in colours to co-ordinate with slats.
- Various control options are available to allow the blinds to tilt, raise and lower or tilt only:

Cord and wand operation for 416 and 425 systems only.

Cord and cord operation for 435 and 450 systems only.

Manual mono control by use of crank handle or beadchain.

Electric mono control by individual switch, group control or infra-red remote control to give full raise, lower and tilt functions.

Dual control using electric operation to tilt and cord for raising and lowering the blind

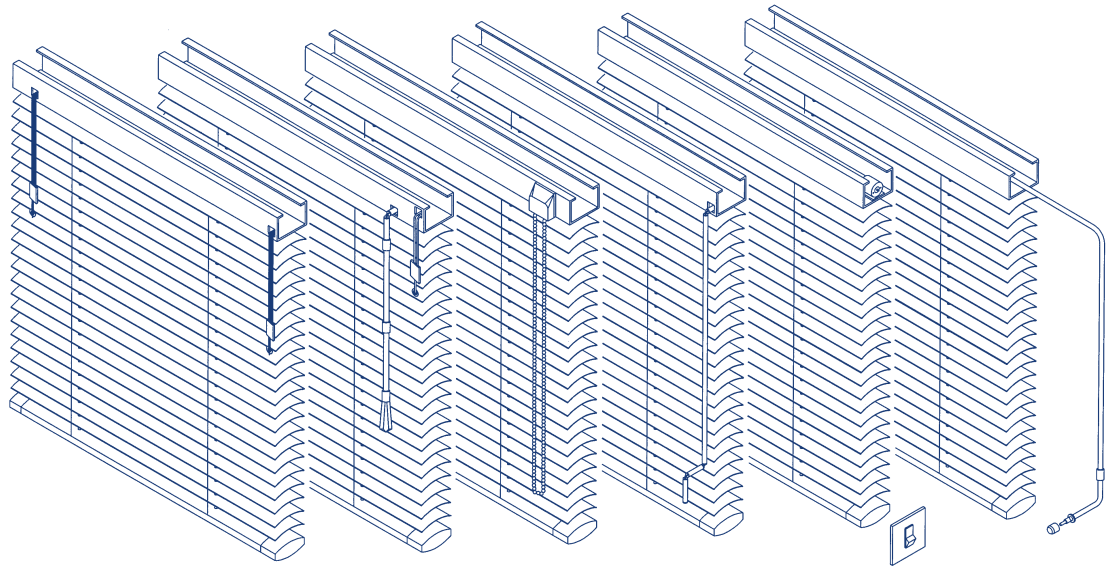
Cable control for tilting within double glazing, behind secondary glazing or within ventilated cavities by means of an aluminium knob fitted to the window mullion.

Bespoke control options are available.

3 Year Warranty

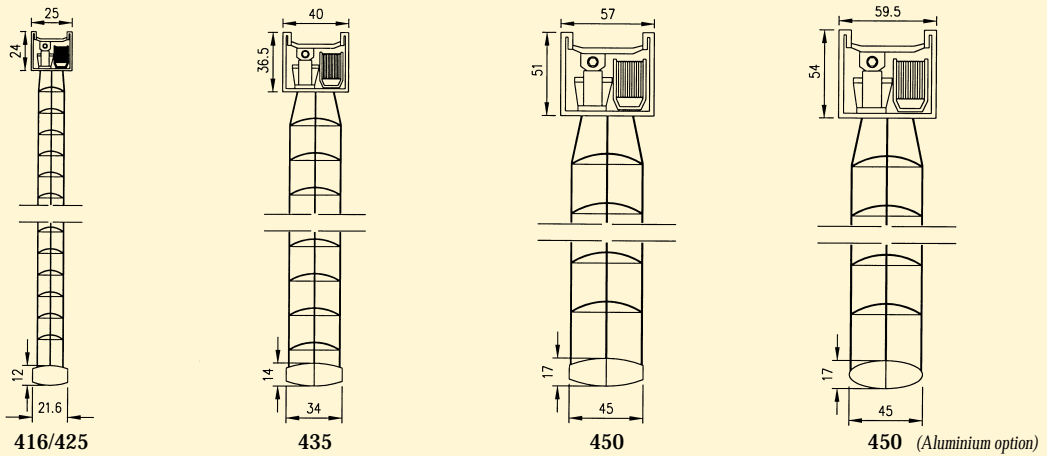
All Levolux systems are made of a high grade material to exacting specifications. This enables us to offer a guarantee providing free of charge replacement parts should any system prove defective within 3 years of installation. This guarantee is conditional on manufacturer's recommended fitting and operating instructions having been followed.



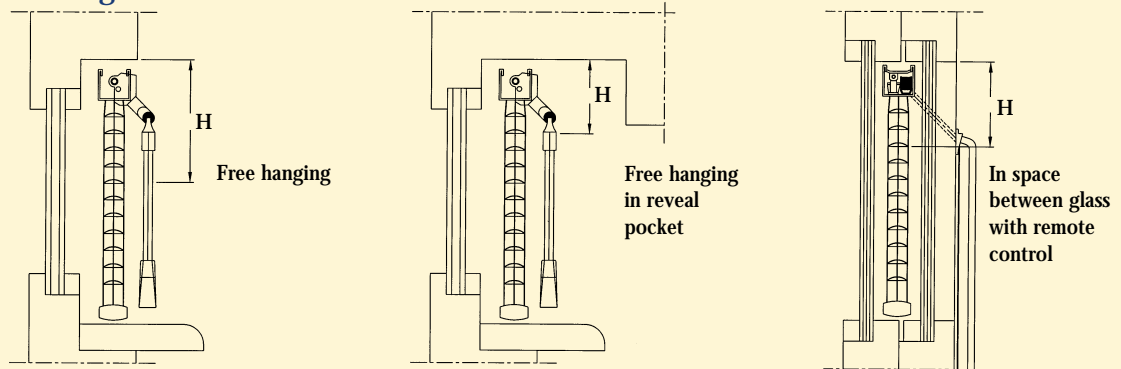


Cord & Cord Cord & Wand Beadchain (mono) Crank (mono) Electric (mono) Cable

Headrail and bottomrail dimensions



Bundle heights



All dimensions in mm

Blind drop (416)	1000	1400	1800	2200	-	-	-	-
Bundle size (H, see above)	80	90	110	120	-	-	-	-
Blind drop (425)	1000	1400	1800	2200	2600	3000	-	-
Bundle size (H, see above)	70	80	90	100	110	130	-	-
Blind drop (435)	1000	1400	1800	2200	2600	3000	-	-
Bundle size (H, see above)	75	85	95	105	115	125	-	-
Blind drop (450)	1000	1400	1800	2200	2600	3000	3400	3800
Bundle size (H, see above)	105	115	125	135	145	155	165	175

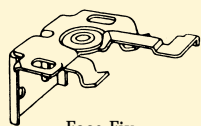


Key Dimensions

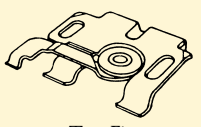
Control systems	Cord/wand		Cord/cord		Mono crank				Mono electric, mono bead chain, dual (cord/electric)			
	16mm	25mm	35mm	50mm	16mm	25mm	35mm	50mm	16mm	25mm	35mm	50mm
Slat width	16mm	25mm	35mm	50mm	16mm	25mm	35mm	50mm	16mm	25mm	35mm	50mm
Max. blind width (mm)	2700	3300*	4500	5000	2700	3300*	4500	5000	2700	3300*	4500	5000
Max. blind drop (mm)	2300	3000	3000	3000	3400	3400	3400	3400	3400	3400	3400	3400
Max. blind surface area	6 sqm	6 sqm*	9sqm	12.5 sqm	4.8 sqm	6 sqm*	8 sqm	10 sqm	4 sqm	4 sqm*	8 sqm	18 sqm

*Using a 35 x 40mm headrail, max. width is 3900mm and max. surface area is 9sqm (limited colour range).

Installation brackets

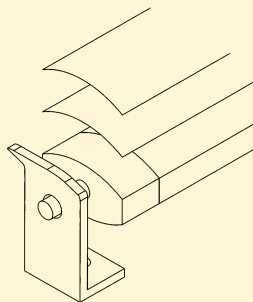


Face Fix Swivel bracket

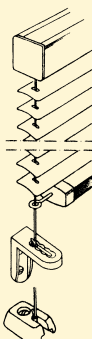
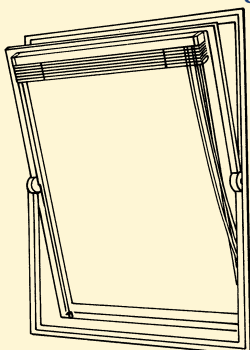


Top Fix Swivel ceiling bracket

Hold down brackets



Side guides



Specification

Internal venetian blinds to be Levolux 416/425/435/450/ bespoke.*

The # mm solid/ perforated* slats shall be# colour with matching head and bottom rails, and co-ordinating cords, ladders and tapes.

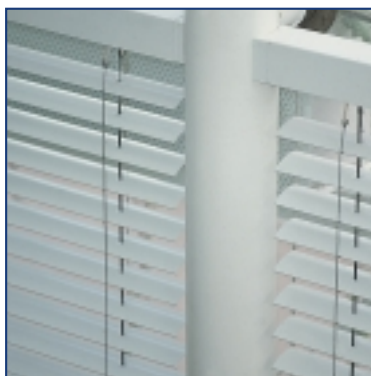
Operation to be

- cord & wand control (416 and 425 only)
- cord & cord control (435 and 450 only)
- mono crank control
- mono beadchain control
- mono electric control for tilt raise and lower
- electric tilt & cord raise and lower control
- tilt only cable control *
(routing & drilling by others)

Supplied and installed by an approved Levolux distributor.

*delete as applicable
insert as applicable

In line with the policy of continuous product development Levolux reserves the right to alter specifications without prior notice.



For further information on Levolux sunscreening systems and effective ways to control light, heat and glare please contact:

Levolux Limited
Forward Drive, Harrow,
Middlesex HA3 8NT,
United Kingdom
Telephone: (+44) 020 8863 9111
Facsimile: (+44) 020 8863 8760
www.levolux.com
info@levolux.com



Levolux A.T. Limited
24 Eastville Close, Eastern Avenue,
Gloucester GL4 3SJ
United Kingdom
Telephone: (+44) 01452 500007
Facsimile: (+44) 01452 527496
www.levolux.com
info@levolux.com