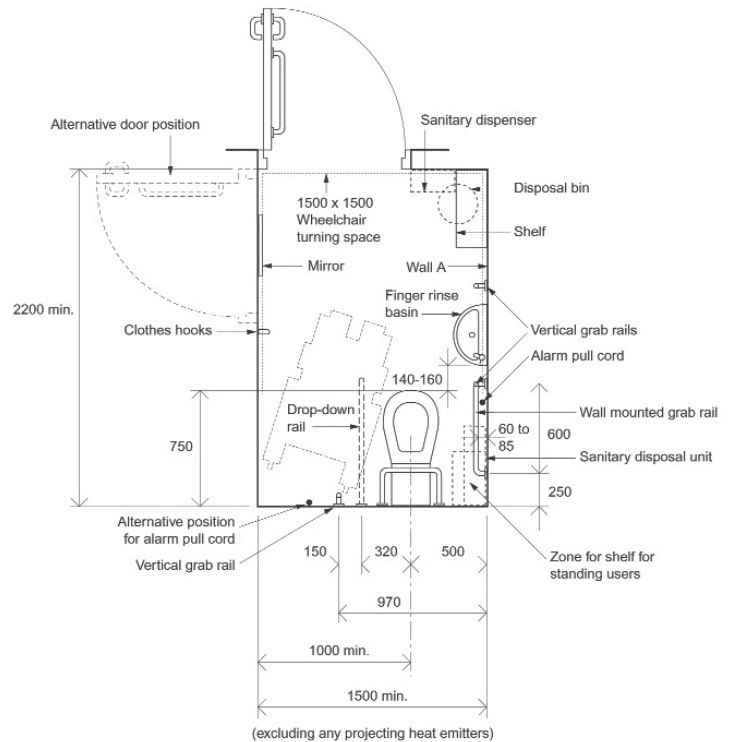


What is DocM?



Note
Layout for right hand transfer to WC



Document M of the building regulations (2004) and BS 8300-2009 provide government guidance on the layouts of an accessible wash-room in non-domestic settings. It ensures consistent levels of installation and function designed for the less-abled user.

The average wheelchair seat is 480mm from the ground. Our DocM toilets are designed to the same height to allow ease of transfer to, and more importantly, from the WC.

The WC:

- Must have a 750mm projection.
- Single operation flushing volume.
- No lid on the seat.
- Easy to operate - dimple lever.
- Raised height to ensure ease of transfer.
- Most importantly the WC must be accessible.

The basin:

- Left or right handed depending on the room layout (tap closest to the WC).
- The basin located near to the WC to facilitate operation before, during and after use of the toilet.

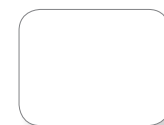
The tap:

- Easy to operate- sequential lever.
- Located nearest to the WC.

The Rails:

- The colour of the rails need to provide a sufficient contrast to the background colour.
- A plus or minus of 30 points in LRV (Light reflective value) is suggested to aid people with impaired vision. Our rails are available in five finishes: white, grey, dark blue, polished stainless steel and satin stainless steel.

Colour samples:



White:
RAL9016
LRV - 87.67



Blue:
RAL5011
LRV - 5.52



Grey:
RAL7005
LRV - 18.52



Stainless Steel
Polished S/S
LRV - 58



Stainless Steel
Satin S/S
LRV - 41