

Supafil® Frame

September 2025

Build on us.



Description

Supafil® Frame is a glass mineral blowing wool, designed for use in either on-site or off-site frame constructions, that offers a range of thermal performance options (depending on its install density in a required application) and consistent coverage.

Supafil® Frame is non-combustible with the best possible Euroclass A1 reaction to fire classification.

Benefits

- › A versatile product that can be used to insulate a variety of timber and steel frame applications.
- › Suitable to fill voids around pipes, wiring, other services and fittings, ensuring a complete fill maximising thermal and acoustic performance.
- › Supafil® Frame can be used in closed cavity applications (in which ventilation is not required) or in combination with Supafil® Veil as an alternative.
- › Installed by 'Approved Supafil® Installers', using specific blowing machines, hoses and nozzles as part of a system.



NON-COMBUSTIBLE
INSULATION

Technical Specifications

EMBODIED CARBON

Weight per bale (kg)	GWP A1-A3 (kgCO ₂ e/m ²)	GWP A1-C4 (kgCO ₂ e/m ²)	GWP A1-A3 (kgCO ₂ e/kg)	GWP A1-C4 (kgCO ₂ e/kg)	Product code
15.5	1.83	2.21	0.73	0.89	2436637

EPD ID - S-P-08862

The declared unit is 1m² of Supafil® Frame blowing wool with R-value of 2.90 m²K/W (for a thickness of 100mm and a declared lambda of 0.034 W/mK).

THERMAL PERFORMANCE

Installed density (kg/m ³)	Application Angle Range (degree)	Thermal conductivity (W/mK)
35*	0-90	0.033
30	0-90	0.033
26**	0	0.034

* 35kg/m³ is the only acceptable install density for off-site frame construction.

** 26kg/m³ is recommended for horizontal floor/ceiling applications only.

USING SUPAFIL® FRAME BETWEEN TIMBER STUDS

Stud thickness (mm)	U-value (W/m ² K)		
	Vapour permeable membrane	Standard clay brick outer leaf (0.77W/mK)	Tile / timber clad outer leaf
200	Standard	0.20	0.22
140	Standard	0.27	0.29
200	Low E	0.17	0.21
140	Low E	0.23	0.28

Low Emissivity membrane used in the above calculations = Protect TF200 Thermo.

U-values calculated assuming Supafil® Frame installed density of 30kg/m³ and having thermal conductivity of 0.033W/mK.

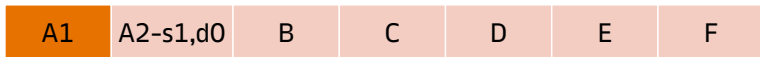
Supafil® Frame

Performance

THERMAL (W/mK)



FIRE CLASSIFICATION



Euroclass reaction to fire classification

VAPOUR RESISTIVITY



Applications

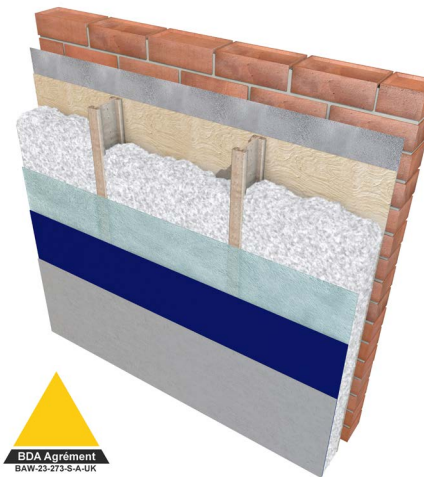


Frame walls (timber or steel) Blown-In



Intermediary floor/
garage ceiling

Typical Build-Ups



Certification, accreditations and industry standards



Application

Supafil® Frame is a glass mineral blowing wool, designed for filling cavities in either on-site or offsite frame construction, that offers a range of thermal performance options (depending on its install density in a required application).

Supafil® Frame is formed in-situ and thus has the advantage that it precisely and quickly fills the intended void, including around services such as pipes, ducts, cables and hard-to-fill profiles such as engineered timber. This means that the intended thermal performance of the insulated structure will be achieved and not diminished by excess heat loss through imperfect fit.

It can be installed in cavities formed between frames that are open on one side in combination with Supafil® Veil or in closed panels with solid surfaces on all four sides. Supafil® Veil is a breathable translucent membrane, which is affixed to the frame to create a cavity into which Supafil® Frame is blown. Supafil® Veil is not required for closed panels where an alternative method of installation is used.

Standards and certification

Supafil® Frame has a BDA Agrément® certificate by KIWA under reference number BAW-23-273-S-A-UK for use in external wall constructions. Additionally, Supafil® Frame has a BDA Agrément® certificate for use in intermediate floors and ceilings under reference number BAF-24-372-S-A-UK.

Supafil® Frame has a product declaration made in conformity with the requirements of BS EN 13162:2012+A1:2015 and are manufactured in accordance with ISO 50001:2018 Energy Management Systems, ISO 14001:2015+A1:2024 Environmental Management Systems, ISO 45001:2023+A1 Occupational Health and Safety Management Systems, and ISO 9001:2015+A1:2024 Quality Management Systems.

All of our mineral wool products are made of non-classified fibres and are certified by EUCEB. EUCEB (European Certification Board of Mineral Wool Products - www.euceb.org) is a voluntary initiative by the mineral wool industry. It is an independent certification authority that guarantees that products are made of fibres which comply with the exoneration criteria for carcinogenicity (Note Q) of the Regulation (EC) 1272/2008.

Supafil® products carry the CCPI mark, helping to provide assurance to product users that the product information for these products is clear, accurate, accessible, up-to-date and unambiguous. The CCPI is playing a pivotal role in driving up standards in product information as the construction industry adapts to a new and improved building safety regime.

Thermal Modelling

The U-value of a proprietary built element (rainscreen façade/ masonry cavity wall/garage soffit etc.) or system is dependent on the material properties and the degree of thermal bridging in the system. Calculations should be created using 2D or 3D modelling programs which comply with the methodologies detailed in BS EN ISO 6946:2017 or BS EN ISO 10211:2017 and using guidance from BR443:2019.

We offer simplified calculations to BS EN ISO 6946:2017 and where required numerically modelled U-value calculations using software that is compliant with BS EN ISO 10211:2017.

System Testing

Knauf Insulation maintains declared product characteristics and qualities which are defined in detail in its Declaration of Performances (DoPs) and product literature. The product literature also includes information relating to Knauf Insulation's requirements and recommendations for installation of its products when being used as part of a system.

Any party using, or planning to use, our products in a system (with or without system testing) where performance may be dependent on product characteristics not declared on our DoPs or our product literature, must contact our Technical Services Team.

Knauf Insulation will not accept liability for any failure in system performance due to product characteristics not declared on DoPs or product literature, or not agreed in a Service Level Agreement. In such an event, any warranty given in relation to those products will be invalidated.

Real Performance

Supafil® Frame is an in-situ formed product. This means that it takes the shape of the void/cavity in which it is formed and therefore naturally accommodates the actual dimensions and variations in spaces to be filled.

The methods specified in the product installation manual result in the correct density and a complete fill being achieved. This means there are no voids in the Supafil® Frame substrate or between the Supafil® Frame and the edges of the cavities.

Achieving a complete fill supports real thermal performance by eliminating cold bridging due to gaps in the insulation and extra heat loss in the structure by air movement around the insulation from the warm surface to the cold surface.

Durability

Supafil® Frame is odourless, rot proof, non-hygroscopic, does not sustain vermin and will not encourage the growth of fungi, mould or bacteria. The product will have a life equivalent to that of the structure in which it is incorporated.

Supafil® Frame

Sustainability

Supafil® Frame is a virgin glass mineral blowing wool which generates low levels of dust and VOCs and which has been awarded the Eurofins GOLD Certificate for 'Indoor Air Comfort'.

All our mineral wool products have been awarded the DECLARE 'Red List Free' label. The Declare label is a third-party accreditation and is similar to a food nutrition label but for building products; it is a straightforward ingredient list and allows product transparency disclosure because it identifies where a product comes from and what it is made of. Declare 'Red List Free' certifies that there is no harmful chemical from the red list in our products.

Our glass mineral wool is made with up to 80% recycled content (incl. glass from windows, bottles and jars).

Supafil® Frame contains no ozone-depleting substances or greenhouse gases. The overall environmental performance of our products is reported in their EPDs (Environmental Product Declarations) which are available on our website. EPDs are available for all our products in accordance with ISO 14025:2023, ISO 21930:2017 and EN 15804+A2:2019.

We have received the BES6001(v4.0) 'Very Good' rating for all our mineral wool in our three plants, which proves that our products are made with constituent materials that are responsibly sourced.

Our industry-leading compression-packaging technology allows us to load more product per pack or pallet, and therefore onto each truck that leaves our factories. This means less packaging used per m² of insulation, fewer vehicles on our roads, so less associated CO₂ emissions. It also means less transport, handling and storage space required for our customers.

Our individual products and the pallets they sit on are wrapped in low-density polyethylene (LDPE4) plastic, which is made of 30-50% (depending on the supplier) recycled plastic content and is fully recyclable.

Handling & Storage

Supafil® Frame should be stored properly and handled in such a way as to ensure that the product remains clean and undamaged.

The polyethylene packs / shrink-wrapped pallets used for the supply of Supafil® Frame are designed for short-term protection only. For longer term protection on site, the product should either be stored indoors or under cover and off the ground. Supafil® Frame should not be left permanently exposed to the elements.

If the main hood is removed or damaged, the remaining packs should be kept under cover indoors or protected from the elements by a weatherproof cover. In coastal locations where weather is more extreme and bird damage is more common, use additional covering or store indoors.

The product must be protected from prolonged exposure to sunlight and stored dry. If damaged, the product should be discarded. Damaged, contaminated or wet product must not be used.

Integration with Kinetik®

Kinetik® is the app-based site reporting system, used by Approved Supafil® Installers, on projects throughout the UK.

The app creates an instant digital record of installations and provides Supafil® customers with data showing that their specified products have been installed on site.

Knauf Insulation Ltd

Stafford Road, St.Helens, Merseyside, WA10 3LZ Customer Service: 01744 766 766

All rights reserved, including those of photomechanical reproduction and storage in electronic media. Extreme caution was observed when putting together and processing the information, text and illustrations in this document. Nevertheless, errors cannot be completely ruled out. The publisher and editors cannot assume legal responsibility or any liability for incorrect information and consequences thereof. The publisher and editors will be grateful for improvement suggestions and details of possible errors pointed out. For the most up-to-date document versions and product information, please always refer to our website.