



DID YOU KNOW THAT ...

Knauf Danoline products are tested for indoor air quality according to Danish Indoor Climate Labelling; and that they are placed in best category with low particle emission and an indoor value of 10 days?

AMFIPANEL

WALL LINING

Special acoustic wall lining for cinemas and other entertainment premises. Discreet unified look with elegant oval perforations. Good sound diffusive properties preventing echoes and ensuring acoustic comfort.

Designpanel
Tectopanel
Contrapanel
Solopanel
Stratopanel
Kinopanel
Amfipanel
Adit



AMFIPANEL

WALL LINING

SIZES

600 x 600 x 12.5 mm

600 x 900 x 12.5 mm

SURFACE

Standard black painted NCS S-9000-N (gloss 5)

Other colours available on request.

DANISH INDOOR CLIMATE LABELLING (DIM)

Indoor value: 10 days

Particle emission: low (< 0.75 mg)

CLEANING

Dust is removed using a dry duster or vacuum cleaner.

Marks can be removed with a damp cloth using normal cleaning practices and neutral cleaning solutions.

AMBIENT CONDITIONS

The product is designed to perform under normal conditions of use. Tested at 70% RH and 25°C. The product can withstand ambient temperatures of up to 50°C.

LIGHT REFLECTION

5.5%

FIRE CLASS

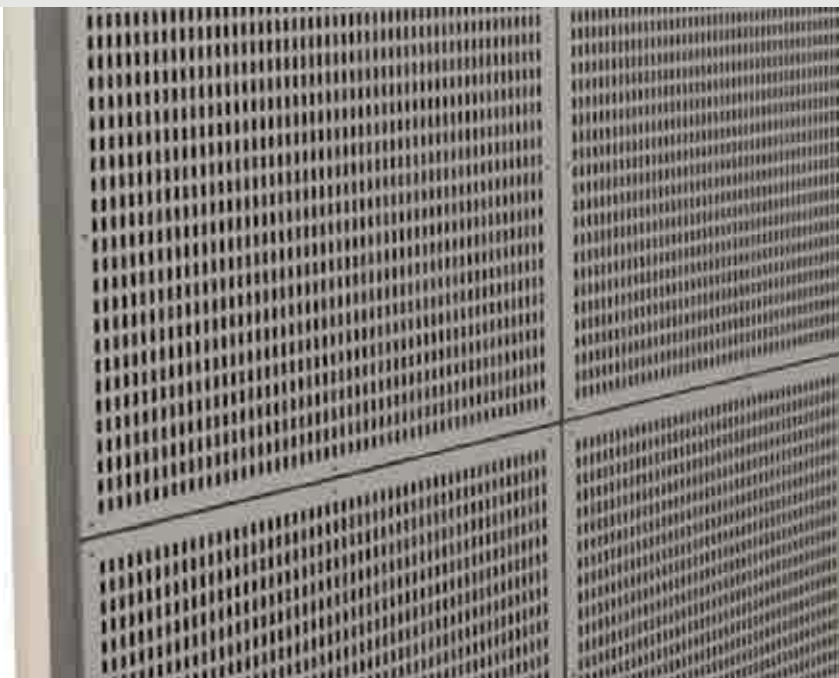
A2-s1,d0

FIRE RATING

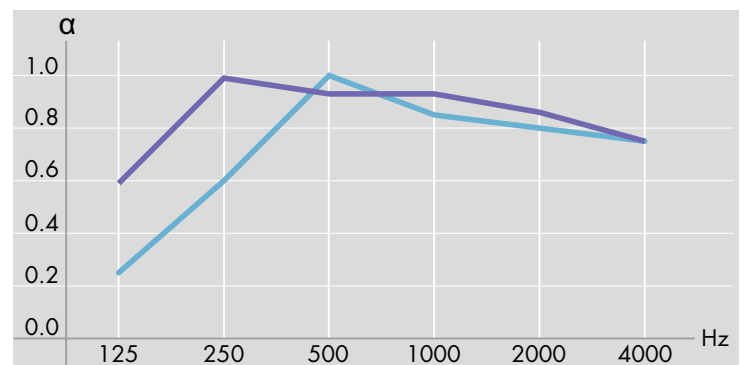
Class 1; K₁ 10, A2-s1,d0

ROBUSTNESS

Made of robust, glass fibre reinforced material with excellent pressure resistance. Under normal conditions of use, the product properties are preserved and there is no decomposition of material over time.



ACOUSTICS



● α	0.25	0.60	1.00	0.85	0.80	0.75
● α	0.60	1.00	0.95	0.95	0.85	0.75

● Tangent, 85 mm installation depth, 50 mm mineral wool aw: 0.85, NRC: 0.80

● Tangent, 135 mm installation depth, 100 mm mineral wool aw: 0.90, NRC: 0.95

Perforation

Tile weight*

Transportation weight*

Tangent

7.2

9.0

*(kg/m²)



CERTIFICATES

- Declaration of Conformity (EN 14190)
- Danish Indoor Climate Labelling

PERFORATION

Also available as Regula.



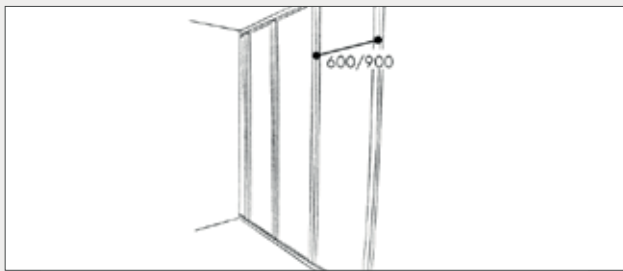
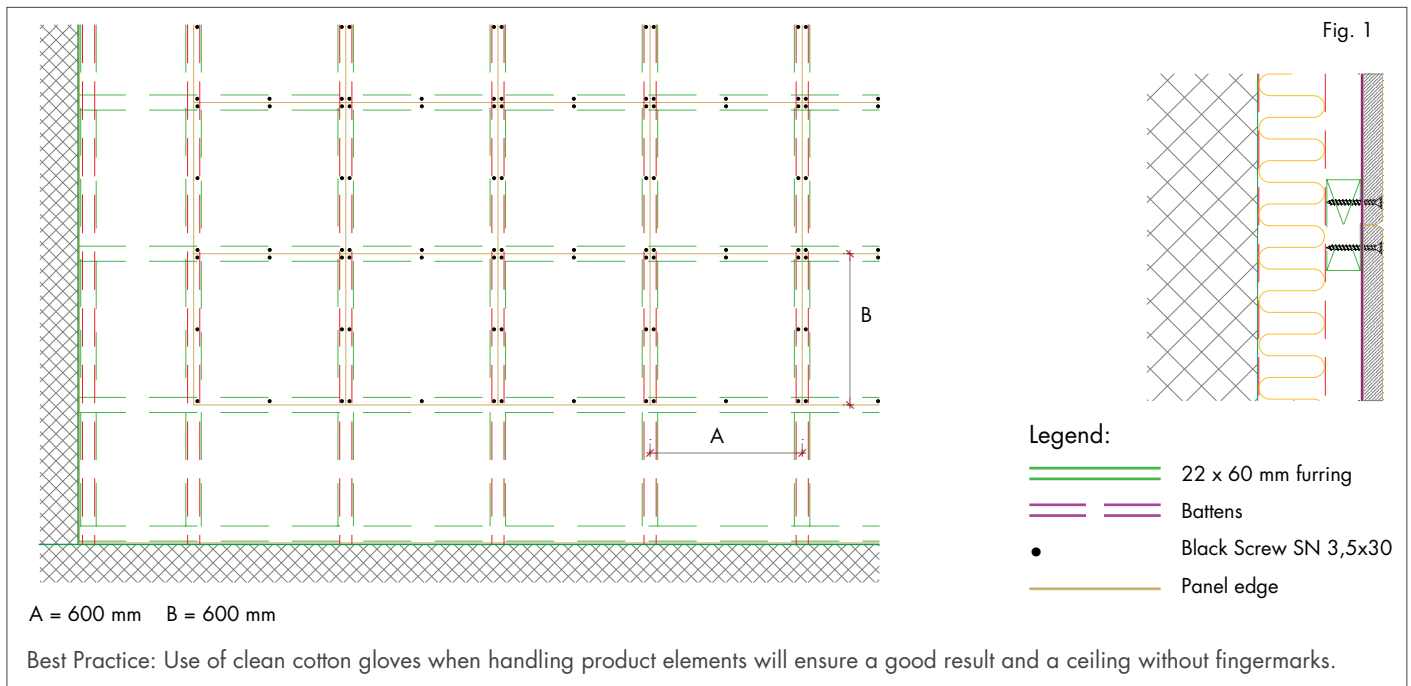
Tangent, 4 x 14 mm,
10/20 mm c/c
Perforation: 22.9%

EDGES



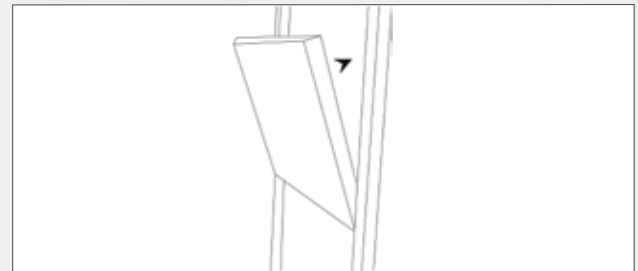
Edge B
(BEVELLED EDGE)
Visible joints

INSTALLATION GUIDE



FURRING

- Fix 50x50 mm or 50x100 mm battens vertically at 600 mm (Amfipanel 600) or 900 mm (Amfipanel 900) intervals.
- The battens must be placed vertically precisely in relation to the joint of the panels.



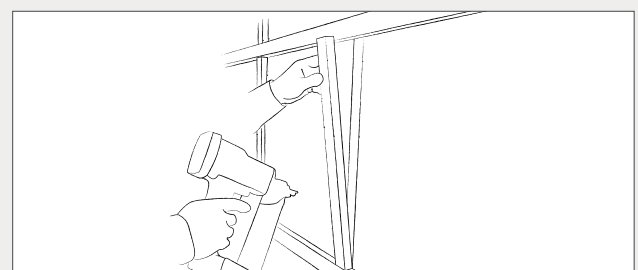
INSULATION

- Place mineral wool (stone wool 30-40 kg/m³ or glass wool 20-25 kg/m³) between the battens.



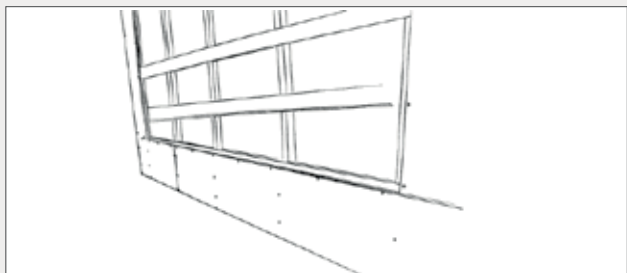
INSTALLATION OF HORIZONTAL FURRING

- Fix 22x60 mm planed battens horizontally to the furring at 600 mm c/c.
- It is important that the battens are mounted precisely and perpendicularly.



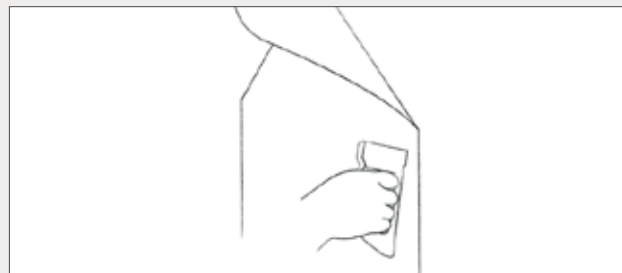
INSTALLATION OF VERTICAL FURRING

- Fix 22x60 mm planed battens on top of the primary furring at 600 mm c/c (Amfipanel 600) or 900 mm c/c (Amfipanel 900).
- It is important that the vertical battens are perpendicular to and flush with the horizontal battens, so that the furring structure is completely plane.



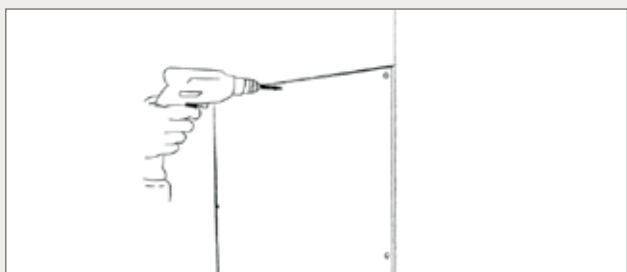
INSTALLATION OF POSSIBLE FRIEZE

- If a frieze is to be installed, it is important that the opening between the friezes is perpendicular and precisely adjusted to the quantity of Amfipanel.
- Install and paint the frieze before installing the panels.



FIXING OF FELT

- Secure the Kino felt to the furring in the area where Amfipanel is to be mounted.

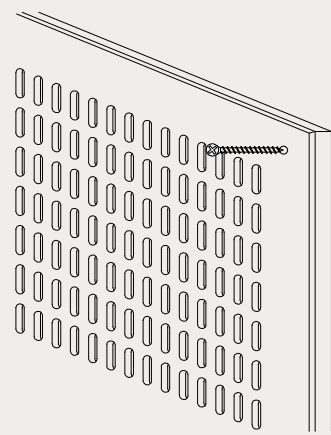
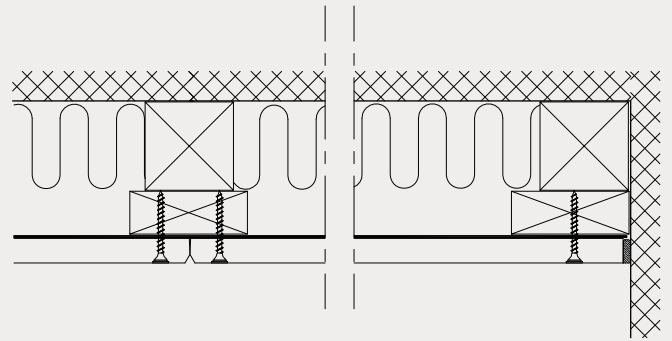
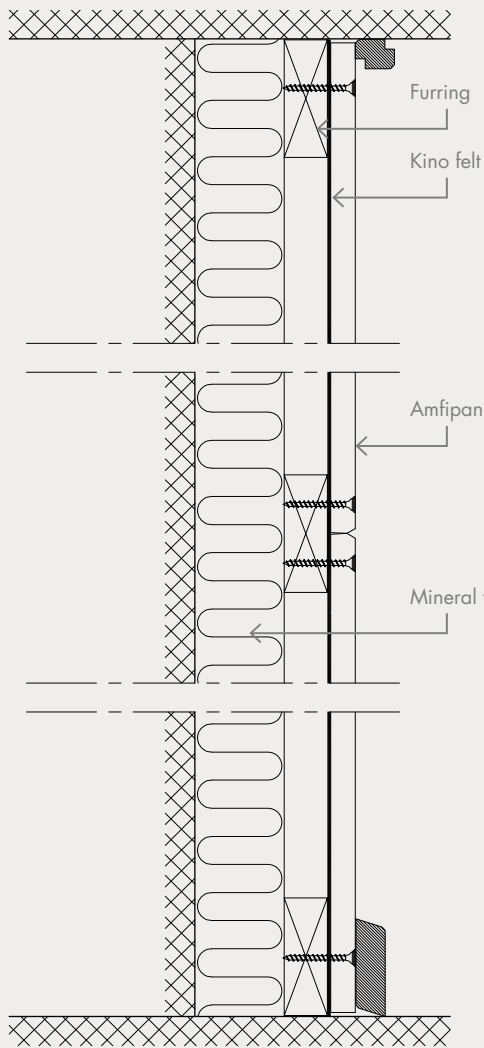


INSTALLATION OF PANELS


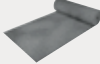
- Fix the Amfipanel to the furring through the pre-bored holes.
- Use black screws (min. 30 mm).

DETAILS

Amfipanel on furring



ACCESSORIES

PRODUCT NAME		SAP NO.	W x L x H
SN 3.5x30		9275	3.5 x 30
Kino felt		9521	1.28 x 100 m

UPKEEP & MAINTENANCE

Best Practice: Use of clean cotton gloves when handling painted and foil-covered product elements will ensure a good result and a ceiling without fingermarks.

PRODUCT CATEGORY	DEMOUNTABLE T-GRID CEILINGS	
Products	Visona, Contur, Belgravia, Linear, Markant, Plaza	Danotile, Medley
Surface	White painted	Foil finish
Upkeep	Designed for use under normal conditions, i.e. up to 70% RH and 25°C, e.g. in offices, institutions and similar premises. Belgravia, Markant, Plaza and Danotile 600x600 have also been tested at 90% RH at 30°C and can be used under more extreme conditions such as kitchens, laboratories and rooms with frequent and major changes in the temperature and air humidity. Special purpose, anticorrosion treated suspension systems should be used in areas of very high humidity.	
Cleaning	Dust is removed using a dry duster or vacuum cleaner. Marks can be removed with a damp cloth using normal cleaning practices and neutral cleaning solutions. Stubborn marks and minor damages should be wiped clean prior to repainting. LINEAR: To ensure good alignment it is important that the tiles are installed in the same orientation. This is also important for maintenance when vacuuming or painting. Always ensure that when applying upward (painting) / downward (vacuuming) pressure, that the tiles are pushed / pulled in the same direction moving away from the grooved edge.	Dust is removed using a dry duster or vacuum cleaner. Marks can be removed with a damp cloth using a mild detergent if necessary. Stronger cleaning agents may be used where necessary to remove stubborn marks or where cleaning regimes require it. The product can also stand rigorous cleaning with concentrated disinfectants and detergents with high and low pH values (13.0 - 2.5).
Repair	Stubborn marks and visible damages and scratches on the surface can be repaired. Damages and scratches can be filled and finished with sandpaper prior to repainting. When painting use Knauf Danoline repair paint or similar (closest RAL colour 9003) and apply by paint roller. Spray painting is not recommended on perforated products, as there is a risk of the spray paint being applied to the acoustic felt backing thereby altering the acoustic properties.	Damages and scratches are difficult to repair and therefore it is recommended to replace damaged tiles with new.
Lamp suspension	<p>DANOTILE: For sizes up to 625x625 and min. thickness 9mm, units of up to 3kg can be installed directly into the panel without reinforcement. For larger module sizes and all sizes in 6mm thickness, a reinforcement panel of sufficient strength can be installed behind the element. The reinforcement panel must extend all the way into the main runners, so that the weight is transferred to them. The total weight should not be greater than 3kg for each m² of ceiling. Where loads are greater than 3kg/m², additional hangers must be used. Units over 3kg, should be installed independently, so that they do not place any load on the ceiling.</p> <p>BELGRAVIA, MARKANT, PLAZA, MEDLEY: For sizes up to 625x625 not in Tangent perforation, units of up to 3kg can be installed directly into the panel without reinforcement. For larger module sizes and all sizes with Tangent perforation a reinforcement panel of sufficient strength can be installed behind the element. The reinforcement panel must extend all the way into the main runners, so that the weight is transferred to them. The total weight should not be greater than 3kg for each m² of ceiling. Where loads are greater than 3kg/m², additional hangers must be used Units over 3kg, should be installed independently, so that they do not place any load on the ceiling.</p> <p>VISONA, CONTUR, LINEAR: With smaller units (of up to 3kg) a reinforcement panel of sufficient strength can be installed behind the element. The reinforcement panel must extend all the way into the main runners, so that the weight is transferred to them. The total weight should not be greater than 3kg for each m² of ceiling. Where loads are greater than 3kg/m², additional hangers must be used Units over 3kg, should be installed independently, so that they do not place any load on the ceiling.</p>	

PRODUCT CATEGORY	SELF-SUPPORTING CEILINGS	
Products	Corridor 400, Corridor Swing	Corridor F30
Surface	White painted	Foil finish
Upkeep	Designed for use under normal conditions, i.e. up to 70% RH and 25°C, e.g. in offices, institutions and similar premises. Corridor 400 and Corridor F30 have also been tested at 90% RH at 30°C and can be used under more extreme conditions such as kitchens, laboratories and rooms with frequent and major changes in the temperature and air humidity.	
Cleaning	Dust is removed using a dry duster or vacuum cleaner. Marks can be removed with a damp cloth using normal cleaning practices and neutral cleaning solutions. Stubborn marks and minor damages should be wiped clean prior to repainting.	Dust is removed using a dry duster or vacuum cleaner. Marks can be removed with a damp cloth using a mild detergent if necessary. On non-perforated tiles stronger cleaning agents may be used where necessary to remove stubborn marks or where cleaning regimes require it.
Repair	More visible damages and scratches on the surface can be repaired using filler and finishing with sandpaper prior to repainting. When painting use Knauf Danoline repair paint or similar (as NCS 0700 or closest RAL colour 9003) and apply by paint roller. Spray painting is not recommended on perforated products, as there is a great risk of the spray paint being applied to the acoustic felt backing thereby altering the acoustic properties.	Damages and scratches are difficult to repair and therefore it is recommended to replace damaged tiles with new.
Lamp suspension	CORRIDOR 400: Units weighing up to 3kg can be installed directly into the panel without reinforcement. N.B. The maximum cut-out, when installing in the centre of the panel is Ø265mm / 265x265mm. Units over 3kg, should be supported independently, so that they do not place any load on the ceiling. CORRIDOR SWING: The ceiling tile may not bear additional weight from other installations.	Objects up to a maximum of 17kg can be suspended using appropriate fixings.

UPKEEP & MAINTENANCE

Best Practice: Use of clean cotton gloves when handling painted and foil-covered product elements will ensure a good result and a ceiling without fingermarks. Handling the untreated panels with care will avoid damage and surface contamination prior to painting and thereby ensure a good end result.

PRODUCT CATEGORY	NON-DEMOUNTABLE CEILING AND WALL LININGS			
Products	Danopanel	Designpanel, Tectopanel, Solopanel, Stratopanel	Contrapanel, Adit	Kinopanel, Amfipanel
Surface	White painted	Untreated	Foil finish	Black painted
Upkeep	<p>Designed for use under normal conditions, i.e. up to 70% RH and 25°C, e.g. in offices, institutions and similar premises.</p> <p>DESIGNPANEL, TECTOPANEL: The panels have also been tested at 90% RH at 30°C and can be used under more extreme conditions such as kitchens, laboratories and rooms with frequent and major changes in the temperature and air humidity. In areas of high humidity consideration should be given to anticorrosion suspension systems and durable/washable surface finishes.</p>		<p>CONTRAPANEL: Designed for use in sports halls and similar areas where conditions do not normally exceed 70% RH and 25°C.</p> <p>ADIT: The panels are custom made and designed for use under normal conditions, i.e. 70% and 25°C, e.g. in offices, institutions and similar premises unless otherwise advised.</p> <p>Adit and Contrapanel have also been tested at 90% RH at 30°C and can be used under more extreme conditions with frequent and major changes in temperature and air humidity.</p>	<p>Designed for use in cinemas, theatres, studios and similar premises under normal conditions, i.e. up to 70% RH and 25°C.</p>
Cleaning	<p>Dust is removed using a dry duster or vacuum cleaner. Removal of marks depends on the paint used on site, although a damp cloth using normal cleaning practices and neutral cleaning solutions is normally suitable for minor marks. In the case of stubborn marks or if in doubt refer to the paint manufacturer's recommendations.</p> <p>CONTRAPANEL: Dust is removed using a dry duster or vacuum cleaner. Marks can be removed with a damp cloth using normal cleaning practices and neutral cleaning solutions. On non-perforated tiles stronger cleaning agents may be used where necessary to remove stubborn marks or where cleaning regimes require it.</p>			
Repair	<p>More visible damages and scratches on the surface can be repaired using filler and finishing with sandpaper prior to repainting. When painting use Knauf Danoline repair paint or similar (closest RAL colour 9003) and apply by paint roller. Spray painting is not recommended on perforated products, as there is a risk of the spray paint being applied to the acoustic felt backing thereby altering the acoustic properties.</p>	<p>Use a paint roller to apply paint. Use the same paint as the original surface finish chosen. Spray painting is not recommended on perforated products, as there is a great risk of the spray paint being applied to the acoustic felt backing thereby altering the acoustic properties.</p>	<p>Damages and scratches are difficult to repair and therefore it is recommended to replace damaged panels with new.</p>	<p>When painting use Knauf Danoline repair paint or similar (as NCS S9000-N) and apply by paint roller. Spray painting is not recommended on perforated products, as there is a risk of the spray paint being applied to the acoustic felt backing thereby altering the acoustic properties.</p>
Lamp suspension	<p>The tile may not bear additional weight from other installations. Light objects up to a maximum of 3 kg/m² may be installed where they can be suspended from the furring system which must be able to bear the full weight.</p>	<p>Light objects up to a maximum of 3 kg can be suspended using appropriate fixings. Items over 3 kg must be suspended from the furring system which must be able to bear the full weight.</p>	<p>CONTRAPANEL: Light objects up to a maximum of 3 kg can be suspended using appropriate fixings. Items over 3 kg must be suspended from the furring system which must be able to bear the full weight.</p> <p>ADIT: The panel may not bear additional weight from other installations.</p>	<p>The panel may not bear additional weight from other installations.</p>

PRODUCT CATEGORY	DESIGN ELEMENTS	
Products	Curvex	Mitex
Surface	Untreated	Untreated
Upkeep	<p>Designed for creating organic wall and ceiling shapes e.g. in offices, institutions and similar premises under normal conditions, i.e. up to 70% RH and 25°C.</p>	<p>Designed for creating clean-cut edges wall and ceiling shapes e.g. in offices, institutions and similar premises under normal conditions, i.e. up to 70% RH and 25°C.</p>
Cleaning	Dependent on the chosen surface finish.	
Repair	Dependent on the chosen surface finish.	
Lamp suspension	The panels are custom made and may not bear additional weight from other installations unless otherwise advised.	