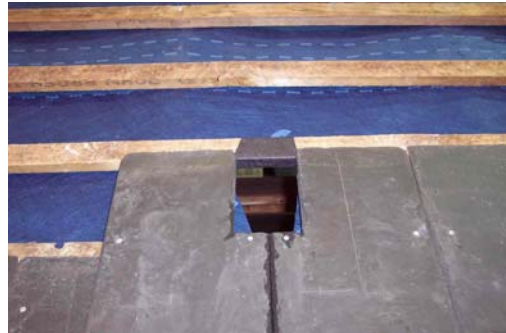




## Small Slate Vent Fitting Instructions



1. Position Slate Vent and cut a hole in underlay, as illustrated, directly below the vent cap position. Fold up the underlay and nail to top of the adjacent batten.



2. Position the two lower slates and trim to allow the 8.5mm diameter pipe to pass through between them and centre-nail the slates into position



3. Position the Slate Vent through the hole in the slates and underlay and centre-nail to battens (rivet if required). If using 500 x 250mm slates cut away the side sections of the Slate Vent shown by guidelines on the underside. For headlaps in excess of 100mm cut off the front section, shown by the guideline on the underside.



4. Continue laying the slates as normal. The two slates above the Vent Cap may require the corners to be trimmed around the pipe, dependent on the headlap. We recommend the use of 3.35mm diameter slate nails giving 25mm penetration (Type A species), for the Slate Vent and the surrounding slates if the downpipe and underlay seal are not installed.

**NB** At high-level install at 0.9m centres to provide the equivalent of a 5mm opening. At low level install at 0.45m centres to provide the equivalent of a 10mm opening. These instructions apply for both roof-space and mechanical ventilation.