

# Large Slate Vent



Large Slate Vent is a large capacity ventilating slate to suit 600mm x 300mm (24" x 12") and 500mm x 250mm (20" x 10") double lap slates, man-made or natural, for roofs with a pitch over 20°.

## Product features & benefits

- Low profile design makes it unobtrusive on the roof line
- Fits perfectly with adjacent slates
- Slate grey cap blends in with most man-made or natural slates
- Built-in downpipe to ensure direct ventilation path into the roof space
- Fully wind tunnel tested
- Adaptor and flexipipe available for soil ventilation or mechanical extraction
- Prevents entry of birds and large insects

## Area of application

Suitable for:

- 600mm x 300mm (24" x 12") and 500mm x 250mm (20" x 10") double lap slates
- Man-made or natural slates
- Roofs with a pitch over 20°

## Material / Colour

Rigid PVC / Slate grey, matt finish

## Product Codes

Slate Vent Base	KG979400
Slate Grey Cap (20 per carton)	KG979630
Adaptor and Flexipipe	KG979800
Adaptor	KG968300
Flexipipe 100/100mm	KG979900
Adaptor 100/125mm	KG979000

## Dimensions / Weight (per carton)

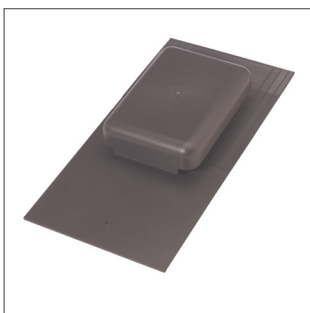
600mm long x 380mm wide x 85mm deep (excluding adaptor/downpipe) / 14.5kg

## Packaging

10 pcs per carton

## Related products

When used as high level ventilation, this product should be used in conjunction with Klobber eaves ventilation products such as Easy-Fit Soffit Strips, Soffit Vents or Fascia Vents.



## Installation

The Slate Vent is positioned as a standard slate and a hole is cut in roofing underlay to accommodate the downpipe. To ensure the integrity of the underlay the use of the Klobber underlay seal is strongly recommended. The rigid base is nailed at either side

of the batten. The two slates on the course immediately above the Slate Vent are cut to fit the profile of the vent body. NB. if using 500mm x 250mm (20" x 10") slates, the front section of the Slate Vent base is detached, as shown by guidelines on the underside, so that the slate course is flush. The adjacent slates on the same course and the slate directly behind the Slate Vent itself are also cut to fit. The tail of Slate Vent base is clipped with the slate rivet. The cap is clipped securely to the base and slating continued as normal.

Full instructions are provided with each product.

## PERFORMANCE / TECHNICAL DATA

Provides 28,000mm<sup>2</sup> vent area (14,000mm<sup>2</sup> effective area)

Vent spacing

5mm opening at 2.8m centres  
10mm opening at 1.4m centres  
25mm opening at 0.56m centres

Airflow resistance

15 litres/sec	30 litres/sec	60 litres/sec
3.5 Pascals	14 Pascals	56 Pascals

TS-00#17-UK-0214. We assume no liability for typing errors.

### Klobber Ltd

Unit 6F · East Midlands Distribution Centre · Short Lane · Castle Donington · Derbyshire · DE74 2HA  
Tel. +44 (0)1332 813 050 · Fax +44 (0)1332 814 033 · info@klobber.co.uk · www.klobber.co.uk

# KLOBBER