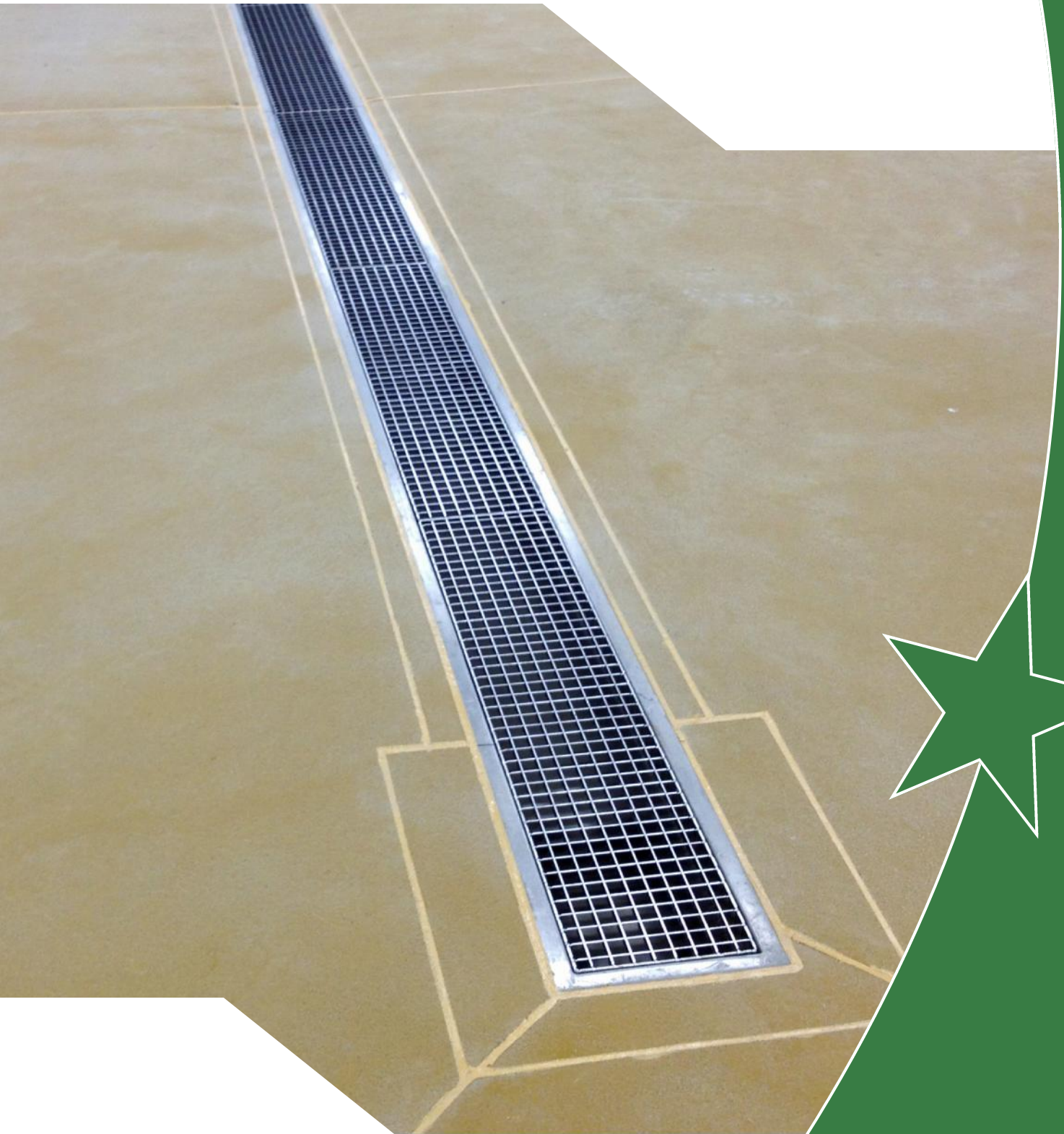




Kent Plain Mesh Grating



Kent Plain Mesh Grating

Description:

Kent Plain Mesh Grating (KMG150) has 22mm x 22mm openings and either 2mm or 3mm load bearing bars depending on the loading required and the free span of the channel. It is perfect for areas with large volumes of wash down water and vat discharge.

Finish is electropolished for extra hygiene

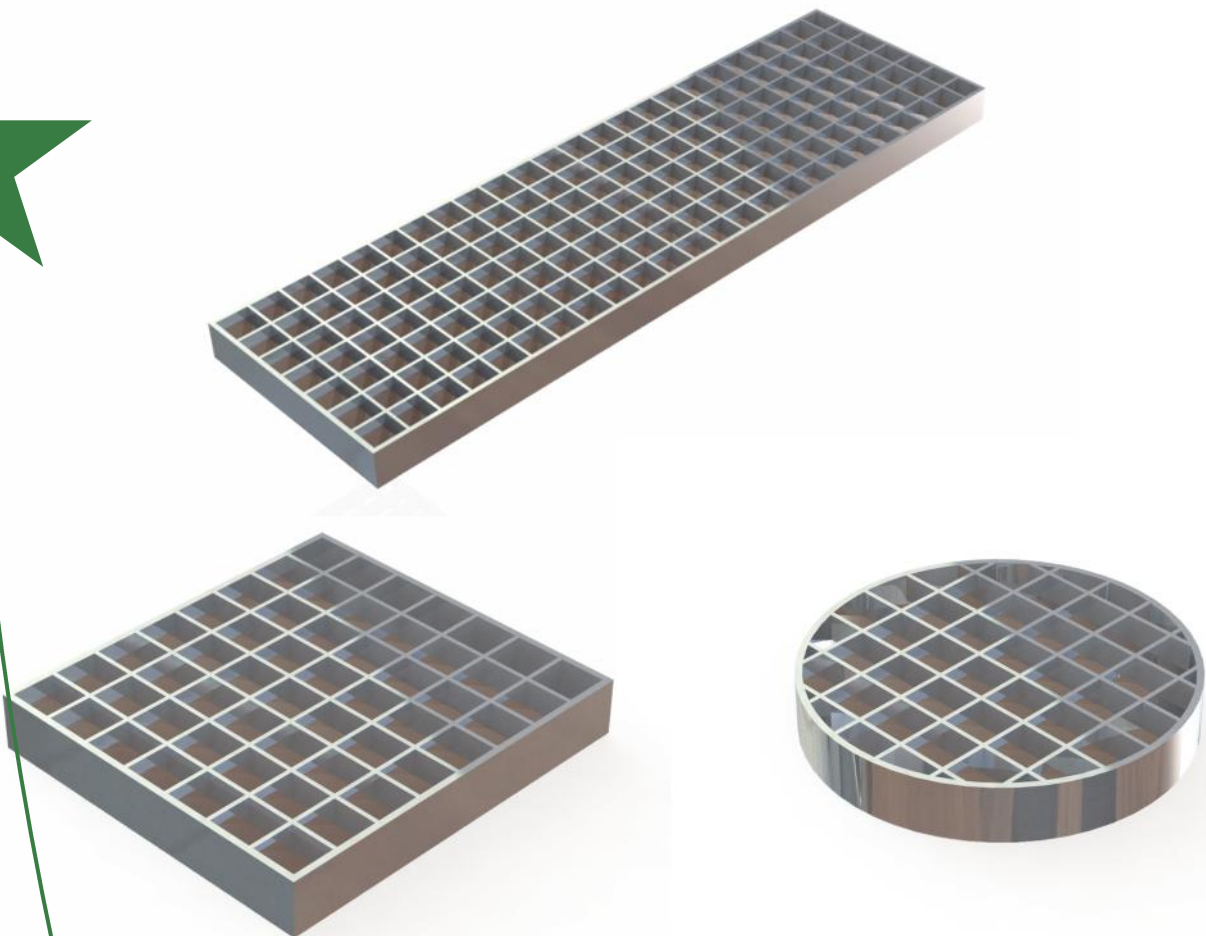
Stock sizes are 146mm wide and 196mm wide x 990mm, 207mm x 207mm, 307mm x 307mm

All sizes can be fabricated

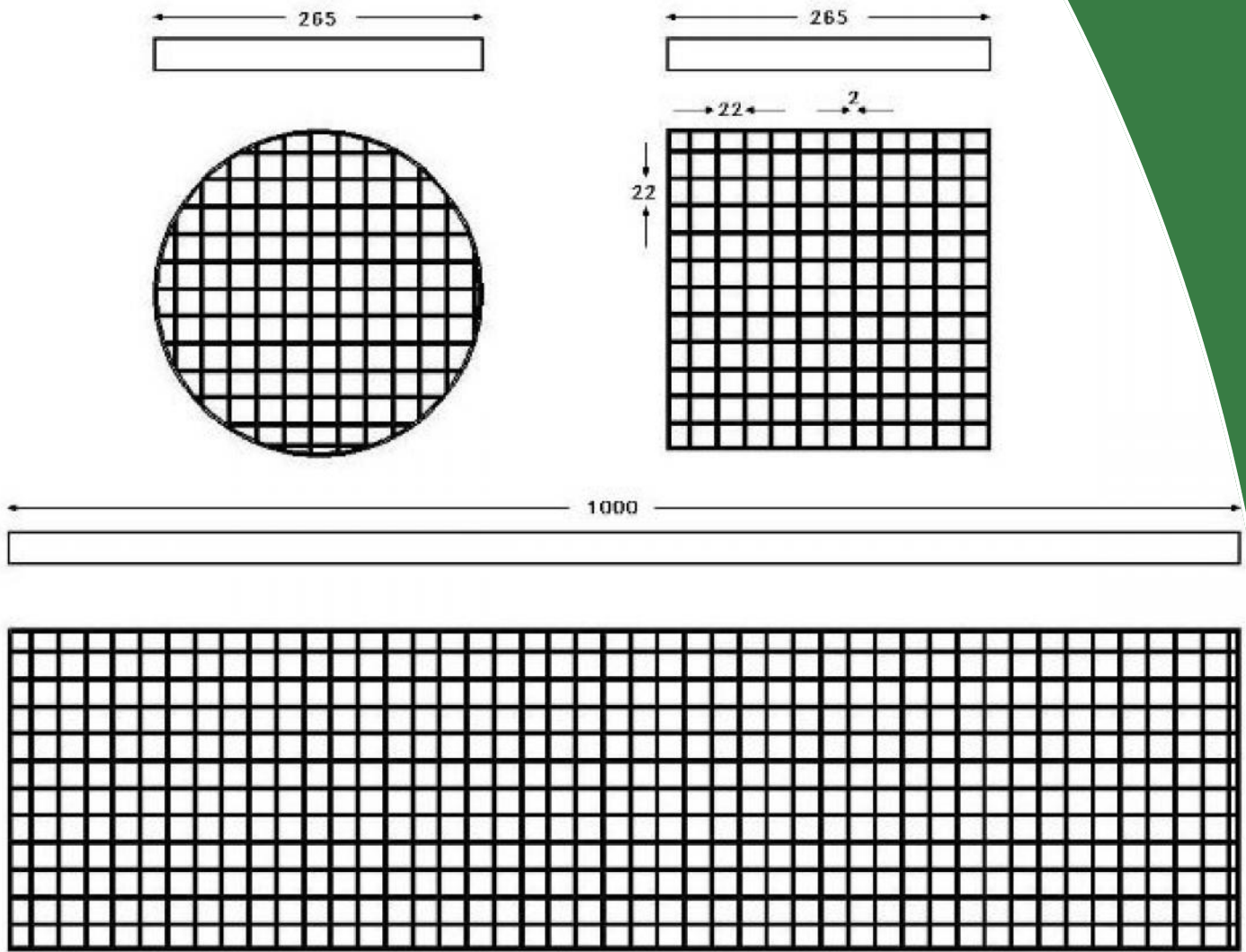
25mm depth as standard - increased to 40mm or 50mm due to required loading

Features:

- Electropolished Finish
- Large free area
- High flow rate applications
- Medium to heavy duty traffic

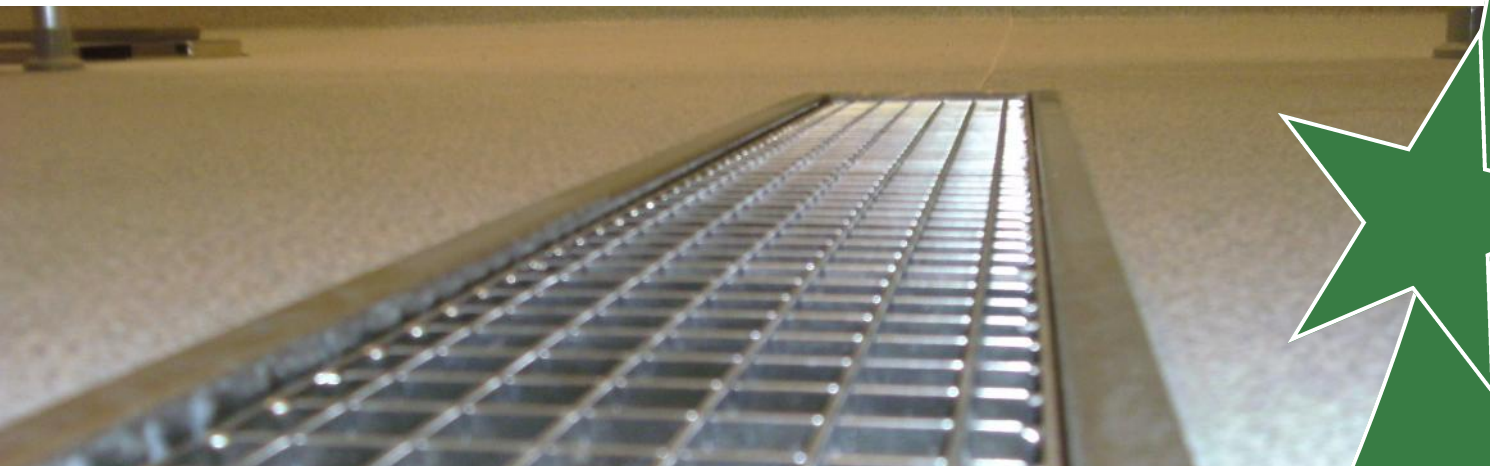


Kent Plain Mesh Grating



Product Dimensions:

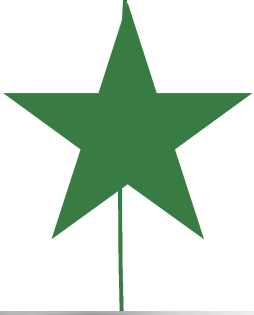
Reference	Length	Width	Depth	Suits	Load Class
Kent Plain Mesh Channel Grating (KMG150)	1000	146	25	KSBC150	A/B/C
Kent Plain Mesh Round Grating (KMG216/25)	265	265	25	KV220	A/B/C
Kent Plain Mesh Square Grating (KMG207/25)	265	265	25	KV215	A/B/C



Maintenance

Stainless Steel:

Clean the stainless steel components using warm water with a mild detergent with a non-abrasive cloth or sponge. Heavier stains may require the use of a nylon-scouring pad or a stainless steel cleaner. To remove paint or graffiti use a cloth and Alkaline or solvent paints and strippers according to type of paint. In the case of a bead blasted finish, where abrasive cleaning is required, always use a random circular rubbing action with a cloth. In the case of brushed finishes the surface consists of uniform fine 'scratches' running in one direction so where abrasive cleaning is required always use a straight back and forward rubbing action in the direction of the grain using soap and warm water. Rust spots or tea stains can occur on the surface of the material, these are normally caused by contamination from ordinary mild steel, particularly in areas where construction work has been undertaken. Such stains can be removed using Rust Remover 410. In cases where the surface is severely stained because of severe environmental conditions or scratched due to misuse, it may still be possible to restore the original finish using chemicals such as Oxalic Acid solution. There are many stainless steel polishes available to enhance the surface finish. We recommend Mister Stainless Ltd. As a provider for stainless steel products.

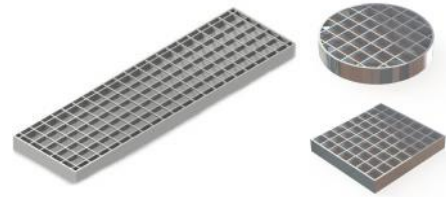


Gratings Overview

Plain Mesh Grating



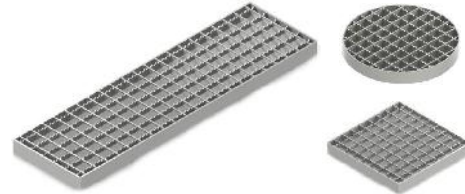
- Load Class A
- Load Class B
- Large free area
- High flow rate application
- Medium to heavy duty traffic



Anti-slip Mesh Grating



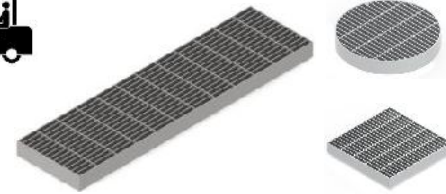
- Load Class A
- Load Class B
- Large free area
- High flow rate application
- Medium duty traffic
- Slip resistant



Heel Mesh Grating



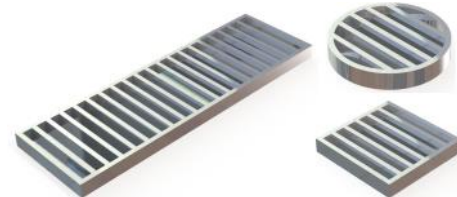
- Load Class A
- Load Class B
- Load Class C
- 6mm Aperture
- Low to Medium flow rate applications
- Low to Medium duty traffic



Ladder Grating



- Load Class B
- Load Class C
- Large free area
- High flow rate application
- Medium to very heavy duty traffic



Anti-Slip Ladder Grating



- Load Class B
- Load Class C
- Large free area
- High flow rate application
- Medium to very heavy duty traffic



Slotted Grating



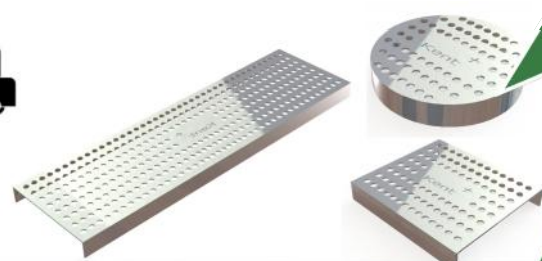
- Load Class A
- Load Class B
- Load Class C
- Slots can be made from 6mm to 20mm to suit high heel or high flow traffic
- Light to very heavy traffic
- Laser cut slots can include logo/wording for projects



Slotted Grating



- Load Class A
- Load Class B
- Load Class C
- 8mm perforations
- Barefoot to heavy duty traffic
- Laser cut perforations can be designed into logo/ symbol/ wording



Kent Plain Mesh Grating

