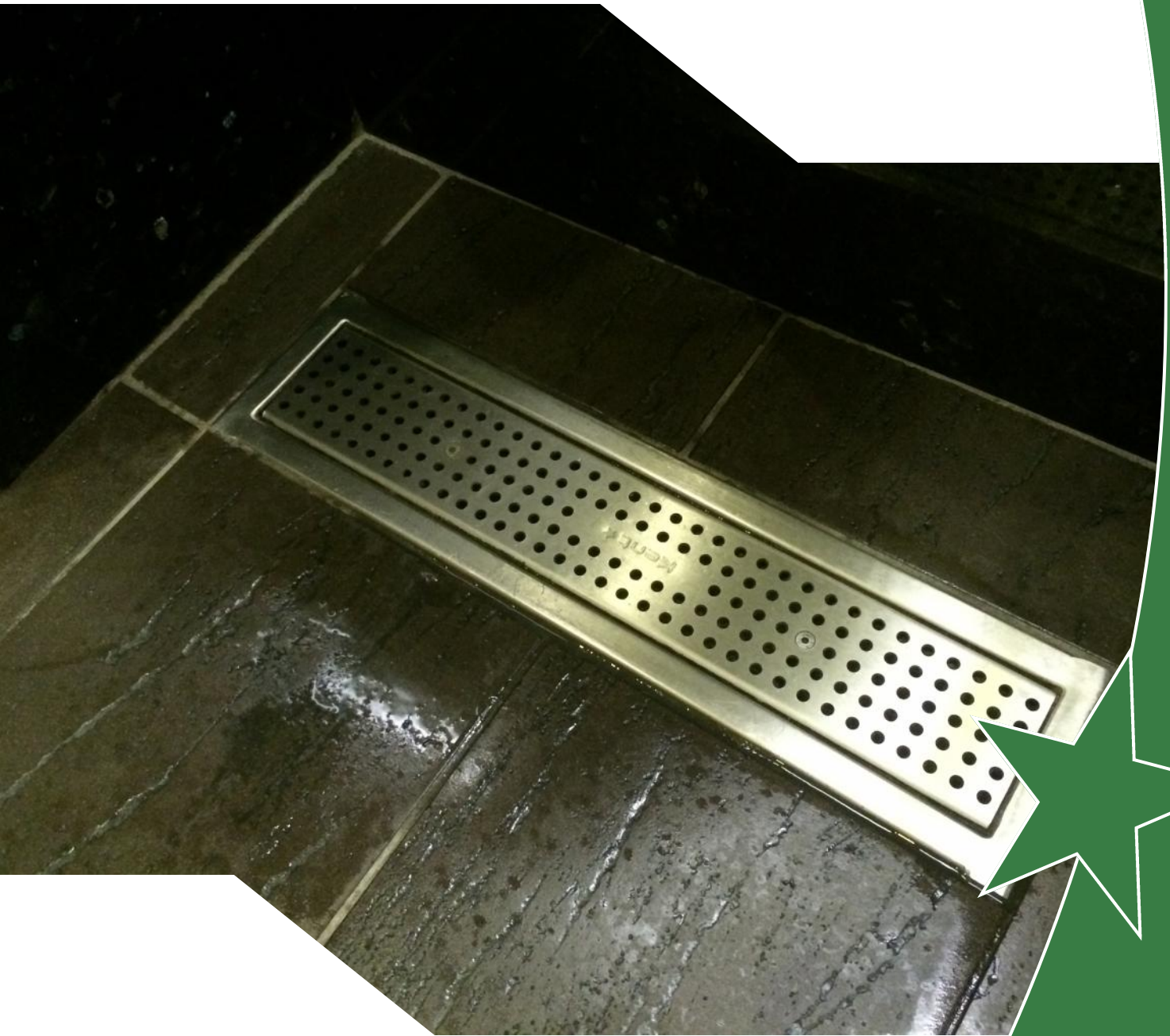




# Kent Perforated Grating



# Kent Perforated Grating

## Specify

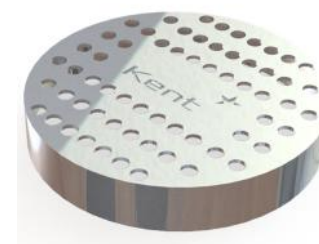
Kent Perforated Grating KPG150; Grade 304L Stainless Steel; 150mm wide x1000mm long x 10 Thick; Load Class A

## Description:

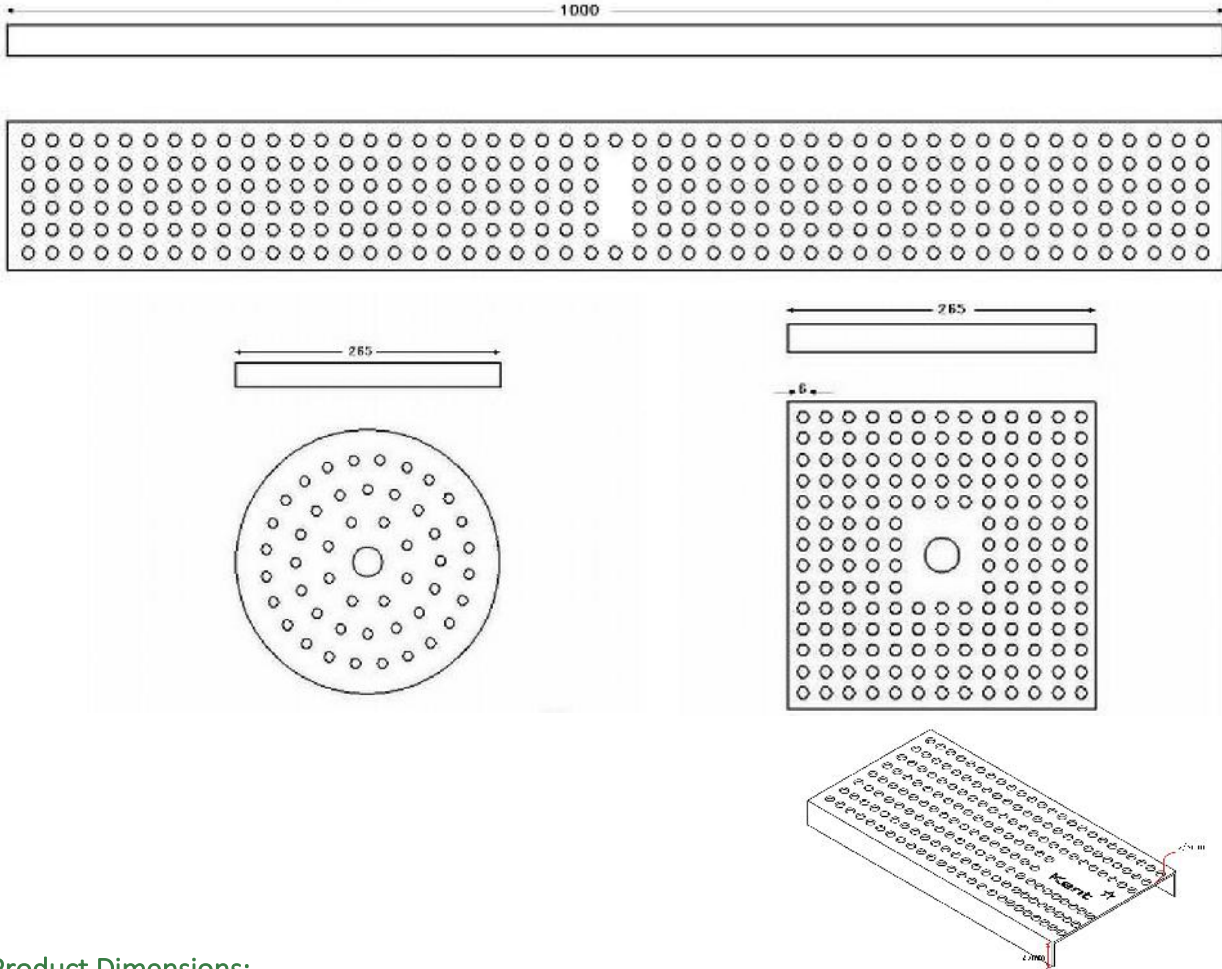
The Kent Perforated Grating is laser cut perforated grating normally used to suit the KSBC range of drainage channels or the KAF Angle Frame range. It is available ex stock normally in 150mm and 200mm widths, each 10mm deep. A 3mm perforated sheet is turned down 10mm on either side for Pedestrian areas. In areas which require a heavier duty grating, it is regularly ordered as 10mm thick steel plate which is laser cut, with no turndown. A riser can be tacked below to fit onto 25mm deep Angle Frame. A lockdown version is optional. It is very regularly specified 'Heavy Duty 10mm Thick' for Meat, Dairy, Beverage, Pharmaceutical factories. The Pedestrian version is also specified for Walkways or for barefoot areas in Swimming Pool Change rooms.

## Recommended For:

- Barefoot
- White-welly traffic
- Pedestrian
- 5 Ton Forklift
- Pallet Trucks

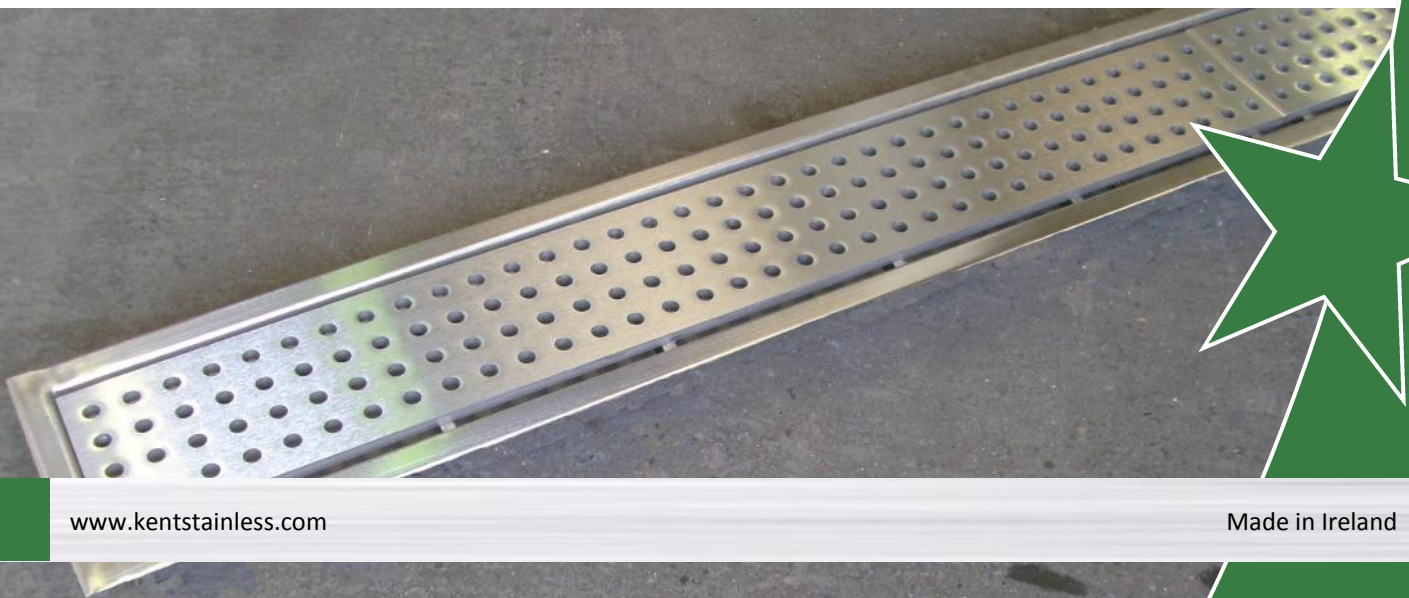


# Kent Perforated Grating



## Product Dimensions:

Reference	Length	Width	Depth	Suits	Load Class
Kent Perforated Channel Grating (KPG150)	1000	146	25	KSBC150	A/B/C
Kent Perforated Round Grating (KPG216/25)	265	265	25	KV220	A/B/C
Kent Perforated Square Grating (KPG207/25)	265	265	25	KV215	A/B/C

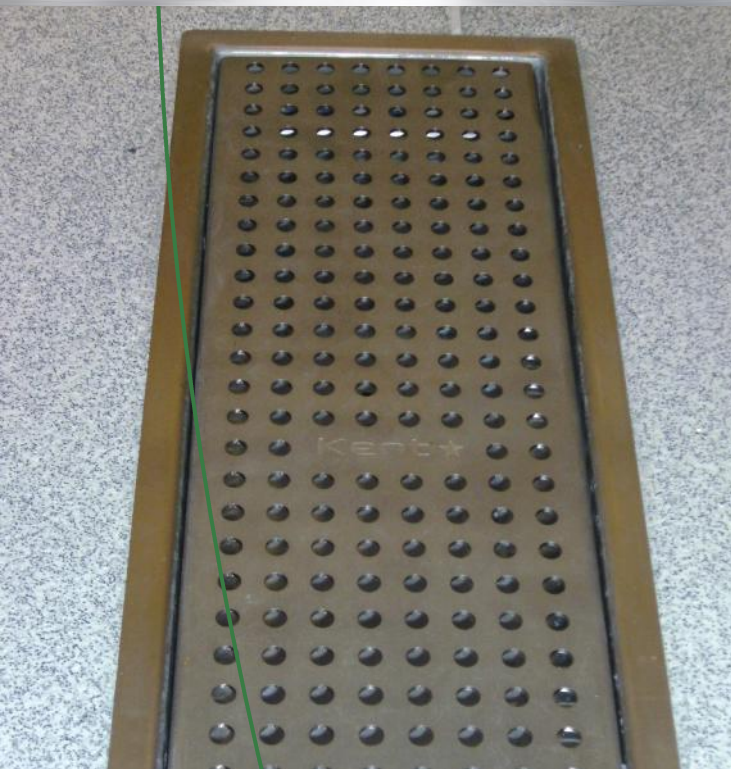


# Kent Perforated Grating

## Maintenance

### Stainless Steel:

Clean the stainless steel components using warm water with a mild detergent with a non-abrasive cloth or sponge. Heavier stains may require the use of a nylon-scouring pad or a stainless steel cleaner. To remove paint or graffiti use a cloth and Alkaline or solvent paints and strippers according to type of paint. In the case of a bead blasted finish, where abrasive cleaning is required, always use a random circular rubbing action with a cloth. In the case of brushed finishes the surface consists of uniform fine 'scratches' running in one direction so where abrasive cleaning is required always use a straight back and forward rubbing action in the direction of the grain using soap and warm water. Rust spots or tea stains can occur on the surface of the material, these are normally caused by contamination from ordinary mild steel, particularly in areas where construction work has been undertaken. Such stains can be removed using Rust Remover 410. In cases where the surface is severely stained because of severe environmental conditions or scratched due to misuse, it may still be possible to restore the original finish using chemicals such as Oxalic Acid solution. There are many stainless steel polishes available to enhance the surface finish. We recommend Mister Stainless Ltd. As a provider for stainless steel products.

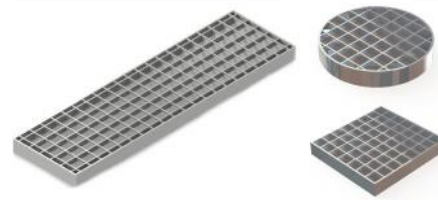


## Gratings Overview

### Plain Mesh Grating



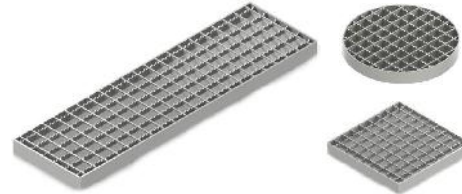
- Load Class A
- Load Class B
- Large free area
- High flow rate application
- Medium to heavy duty traffic



### Anti-slip Mesh Grating



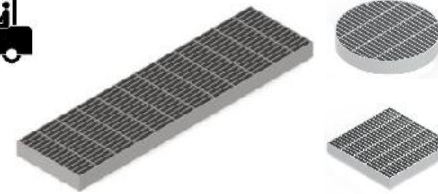
- Load Class A
- Load Class B
- Large free area
- High flow rate application
- Medium duty traffic
- Slip resistant



### Heel Mesh Grating



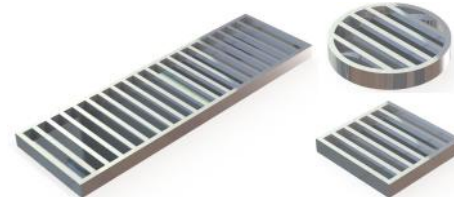
- Load Class A
- Load Class B
- Load Class C
- 6mm Aperture
- Low to Medium flow rate applications
- Low to Medium duty traffic



### Ladder Grating



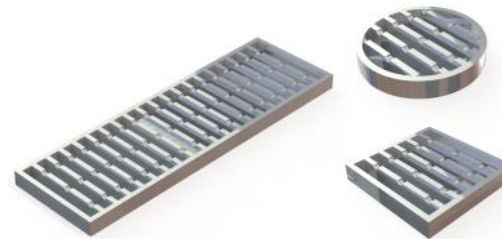
- Load Class B
- Load Class C
- Large free area
- High flow rate application
- Medium to very heavy duty traffic



### Anti-Slip Ladder Grating



- Load Class B
- Load Class C
- Large free area
- High flow rate application
- Medium to very heavy duty traffic



### Slotted Grating



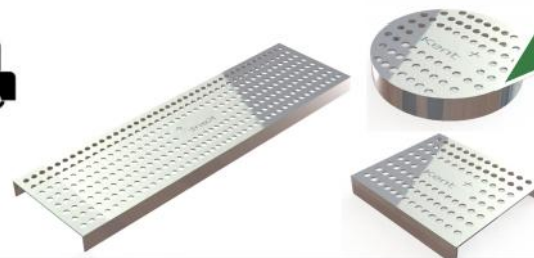
- Load Class A
- Load Class B
- Load Class C
- Slots can be made from 6mm to 20mm to suit high heel or high flow traffic
- Light to very heavy traffic
- Laser cut slots can include logo/wording for projects



### Perforated Grating



- Load Class A
- Load Class B
- Load Class C
- 8mm perforations
- Barefoot to heavy duty traffic
- Laser cut perforations can be designed into logo/ symbol/ wording



# Kent Perforated Grating

